

SITEBOX LIMITED

UK Sales Tel: 01737 783101

Fax: 01737 783102

London: 0208 7639800

TRADE CATALOGUE ISSUE 1

BUILDING PRODUCTS & INDUSTRIAL SUPPLIES

?
?
?
?
?
?
?
?

Unbelievable Trade Prices
Free Shipping Over £50
Quality Branded Products
Large Stockholding
Nationwide Next Day Delivery
No Minimum Order Value
Direct Delivery To Site
Credit Facilities Available

All prices exclude VAT

www.sitebox.ltd.uk



DELIVERING SITE SUPPLIES NATIONWIDE

WELCOME

Sitebox Ltd. Catalogue

2008 - 2009

This 2008/09 Trade Issue offers our largest range of site essentials yet at extremely competitive prices making us your one stop tool and equipment shop. Just place your order before 3pm (Monday - Friday) and as long as it is in stock, we can deliver next working day.

Please note: This brochure offers only a fraction of the products that we stock. For the full range of products, please visit Sitebox ONLINE at **www.sitebox.ltd.uk**

Four Simple Ways to Order

- 1) Order online at **www.sitebox.ltd.uk**. We accept all major credit cards and now also payment via Paypal
- 2) Fax your order through to 01737 783102
- 3) Email your order to sales@sitebox.ltd.uk
- 4) Phone us on 01737 783101

If you hold a credit account with us, and use options 2, 3 or 4 and your order will be processed immediately. If you do not have an account with us we can send you a proforma invoice.

For quotations on larger orders, or for items that you cannot find in this brochure or on our website, please email your details to sales@sitebox.ltd.uk and our sales team will deal with your query quickly and efficiently.

Alternatively you can visit our main trade counter at the address below.



Sitebox Ltd.

Unit 19 Ormside Way,
Holmethorpe Industrial Estate,
Redhill,
Surrey,
RH1 2QA

Tel: 01737 783 101

Fax: 01737 783 102

email: sales@sitebox.ltd.uk

Web: www.sitebox.ltd.uk

Sat Nav: 51:15:7N 0:9:24W

SECTION GUIDE

1.	ACCESS EQUIPMENT	4 - 8
2.	BITS & BLADES	9 - 12
3.	CORPORATE CLOTHING	13 - 14
4.	FIRST AID & JANITORIAL	15 - 15
5.	FIXINGS	16 - 21
6.	TRAFFIC MANAGEMENT	22 - 22
7.	HAND TOOLS	23 - 26
8.	LIGHTING AND ELECTRICAL	27 - 28
9.	NAILERS & STAPLERS	29 - 30
10.	PAINTING & SEALANTS	31 - 33
11.	POWER TOOLS	34 - 38
12.	PROTECTIVE CLOTHING	39 - 45
13.	SECURITY & HARDWARE	46 - 46
14.	SITE EQUIPMENT	47 - 51
15.	STORAGE	52 - 53
16.	TAPES & SHEETING	54 - 56
17.	FOR HIRE	57 - 57

sales@sitebox.ltd.uk

01737 783101

Titan Aluminium Builders Steps Class1



BS2037 Quality aluminium steps for trade + industrial use. Large non-slip step treads, locking stays, broad base- and rubber feet

Code	Size	Open Height	Price (£)
APS04T	4 tread	0.85m	44.25
APS06T	6 tread	1.35m	54.95
APS08T	8 tread	1.75m	64.45
APS10T	10 tread	2.24m	77.75
APS12T	12 tread	2.63m	99.85

Titan Fibreglass Industrial Steps



Fine quality heavy duty steps with wide serrated aluminium steps + non-slip rubber feet. **EN131 Trade Duty Rating 150Kg**

Code	Size	Open Height	Price (£)
F740 04	4 tread	1.14m	49.79
F740 06	6 tread	1.55m	62.90
F740 08	8 tread	2.05m	79.95
F740 10	10 tread	2.90m	99.99

Everbuild Hop-Up Platforms



Lightweight work platform with a compact design for easy storage.

Sturdy aluminium construction with secure locking mechanism and non slip feet.

Platform size (1HOP80): 80cm x 30cm. Height: 60cm.

Platform size (1HOP90): 90cm x 60cm. Height: 60cm.

Max Load: 150kg. Manufactured to EN131: 1993 - Part 2 with BS2037 certificate

Code	Price (£)
1HOP80	37.95
1HOP90	49.95

Titan Industrial Aluminium Extension Ladders



Rectangular box section stiles for extra strength and rigidity. Large 'D' shaped rungs positioned at the correct working angle for maximum comfort. Perfect twist-proof rung joint. Non-slip feet fitted top and bottom of each section. Conforms to Trade EN131 Maximum Load 150kg. Other sizes available to order at www.sitebox.ltd.uk

2 SECTION PUSH UP / EXTENSION LADDERS

Code	Closed Height (m)	Extended Height (m)	Weight (kg)	Price (£)
CLA30D	3.0	5.1	12	79.75
CLA35D	3.5	6.1	13	95.45
CLA40D	4.0	7.1	17	107.95

3 SECTION PUSH UP/ EXTENSION LADDERS

Code	Closed Height (m)	Extended Height (m)	Weight (kg)	Price (£)
CLA25T	2.5	5.6	18	108.95
CLA30T	3.0	7.1	21	129.05

Mark1 Podium Steps with Extending Guard Rail

Designed to go through standard doorway without the need to dismantle (Mk1 Only).

Made under ISO9001 quality assurance system and provides a safe anti-slip platform deck offering 360 degrees access. Capacity Weight 150kg.

Specifically designed HSE coated rubber anti-slip castors.

Folds flat for ease of handling and transportation.

Weight 23kg
Platform Heights 0.8m, 1m or 1.2m
Overall Height 1.99m
Overall Height with Guardrail Extended 2.19m
Overall Length 1.25m
Overall Width 0.68m

Code	Price (£)
PSMK1	325.00



Mk 1



Mk 2



Mk 3

Mark 2 Podium Steps

Weight 35kg
Max Platform Height 1.55m
Overall Height 2.55m
Overall Length 1.25m
Overall Width 0.9m

Code	Price (£)
PSMK2	679.00

Mark 3 Podium Steps

Weight 45kg
Max Platform Height 1.9m
Overall Height 2.9m
Overall Length 1.3m
Overall Width 0.9m (without stabilisers)

Code	Price (£)
PSMK3	949.00

BoSS Aluminium Industrial Quality Modular Access Towers

All the BoSS towers combine new heights of performance with outstanding safety features. Patented colour coded brace hook for the most secure grip. Integral ladders built into the end frames for safe access. Ribbed tubing for non-slip grip. Rugged stabilisers for outstanding rigidity. Compliant with the 3T and Advanced Guardrail methods of assembly.



Boss Double Width (1450mm) Towers

Boss Single Width (850mm) Towers

When ordering please replace ** on the product code with the corresponding length e.g. /18 for a 1.8m long tower and /25 for a 2.5m long tower

Code	Platform Height	Price(£) 1.8m length	Price (£) 2.5m length	Code	Platform Height	Price(£) 1.8m length	Price (£) 2.5m length
301218/**	1.2m	749.25	809.26	301217/**	1.2m	637.19	676.17
301718/**	1.7m	882.06	944.37	301717/**	1.7m	759.29	800.56
301523/**	2.2m	922.38	984.69	301522/**	2.2m	896.29	965.56
302523/**	2.7m	1222.62	1308.27	302522/**	2.7m	1096.03	1155.41
303523/**	3.2m	1377.46	1470.91	303522/**	3.2m	1227.48	1299.32
304523/**	3.7m	1510.86	1606.02	304522/**	3.7m	1330.14	1423.71
305523/**	4.2m	1571.26	1668.72	305522/**	4.2m	1403.56	1479.99
306523/**	4.7m	1699.39	1820.20	306522/**	4.7m	1627.96	1722.49
307523/**	5.2m	1854.81	1982.84	307522/**	5.2m	1759.41	1866.41
308523/**	5.7m	1987.62	2117.95	308522/**	5.7m	1881.51	1998.80
309523/**	6.2m	2048.03	2180.65	309522/**	6.2m	1921.09	2047.08
310523/**	6.7m	2269.82	2452.78	310522/**	6.7m	2170.89	2325.78
311523/**	7.2m	2425.23	2588.42	311522/**	7.2m	2327.54	2469.72
312523/**	7.7m	2558.05	2684.66	312522/**	7.7m	2449.64	2594.09
313523/**	8.2m	2618.45	2786.23	313522/**	8.2m	2503.62	2650.36
315523/**	9.2m	2902.00	3100.35	315522/**	9.2m	2635.96	2813.26
317523/**	10.2m	3095.22	3298.16	317522/**	10.2m	2941.89	3123.79
319523/**	11.2m	3378.77	3612.28	319522/**	11.2m	3204.09	3416.55
321523/**	12.2m	3551.90	3787.70	321522/**	12.2m	3380.16	3597.22

Boss Tower Spare Components

Code	Description	Price (£)
333513	Castor 125mm	18.61
328423	Castor 150mm	25.97
335513	Adjustable Leg Assembly MED	16.29
308513	Ladder Frame 850 2 Rung	82.85
302513	Span Frame 850 2 Rung	58.71
307513	Ladder Frame 850 3 Rung	97.66
301513	Span Frame 850 3 Rung	71.69
306513	Ladder Frame 850 4 Rung	116.75
300513	Span Frame 850 4 Rung	87.90
311513	Ladder Frame 1450 2 Rung	95.75
305513	Span Frame 1450 2 Rung	63.67
310513	Ladder Frame 1450 3 Rung	123.29
304513	Span Frame 1450 3 Rung	79.74
309513	Ladder Frame 1450 4 Rung	148.01
303513	Span Frame 1450 4 Rung	96.74
304511	Trapdoor Deck 1.8m	87.48
305511	Trapdoor Deck 2.5m	103.94
301511	Fixed Deck 1.8m	69.21
302511	Fixed Deck 2.5m	91.13
312513	Horizontal Brace 1.8m	20.18
348513	Horizontal Brace 2.5m	22.82
313513	Diagonal Brace 2.1m	20.93
314513	Diagonal Brace 2.7m	23.32
304509	Side Toeboard 1.8m	9.14
305509	Side Toeboard 2.5m	10.87
302509	End Toeboard 0.6m	5.04
303509	End Toeboard 1.2m	8.75
301509	Toeboard Clip	2.84
317513	Stabiliser SP7 (Fixed)	44.81
318513	Stabiliser SP10 (Telescopic)	69.21

Youngman MiniMax Trade Tower System

An Entry Level trade tower offering a lightweight access system that is easy to transport and store. Designed to be transported in a family car. Fold out base unit working height of 2.9m, with add on packs heights of 3.7m, 5.7m and 7.8m can be reached.

Platform Area: 1830 x 700mm



Scafftag Scaffold Management System



Internationally used and recognised as the safety system to assist with the control of scaffolding from first build to dismantle. Kit comprises of 10 holders, 20 reversible inserts, 2 pens.

Replacement Registration Cards for Scafftag Scaffold System available (STSH/SPI)

Code	Price (£)
STSH	54.99
STSH/SPI	14.95 per 10

Laddertag Management System

Widely used ladder management system comprising of 10 holders, 10 reversible inserts, 1 pen.

Regulations require ladders to be checked for damage, faults and wear before use by any authorised user.

Code	Price (£)
EITH/L12	44.99

Microtag Registration Cards



Microtag is a safety system which is particularly useful for identifying small plant, equipment (including safety harnesses and lanyards) and lifting gear. Inserts available in blue, green or red, please specify when ordering.

Code	Description	Price (£)
MTH01	Holders	1.98 ea
MTH10	Inserts	5.58 per 10

MiniMax Pricing Structure

Code		Price (£)
370518	Base Pack	295.00
371518	Extension Pack (2m)	355.75
372518	Guardrail Pack	198.15
373518	Stab. Pack (S) 2 items	109.50
374518	Stab. Pack (M) 2 items	199.99
379518	Adj. Leg Pack 4 items	95.44

Working Heights (WH) and Packs Required

WH	370518	371518	372518	373518	379518
2.9m	1	-	-	-	-
3.7m	1	1	-	2	-
5.7m	1	1	1	2	-
7.8m	1	1	2	-	2

Telesteps Telescopic Ladder 3.3m



The worlds first telescopic ladder.
Conforms to Trade EN131, Maximum
load 150kg. Available in **Redline**: Manual
Locking or **Blackline**: Automatic Locking
(Blackline more suited to on-site use)
Weight: 10.0kg
Length: 78cm closed 3.3m extended
Width: 49cm
Number of steps: 11
Tread width: 40

For the full range please visit www.sitebox.ltd.uk

Code	Description	Price (£)
50133	Redline	129.00
50134	Blackline	149.00

Telesteps Carrying Bag

Code	Price (£)
9129	27.00

Marshalltown Skywalker Stilts



The most tried and tested stilts
you can buy. Max Load 102kg

Height Adjustment
18"-30" / 350-760mm

Code	Price (£)
MTSS01	199.00

Titan Basemate Professional Ladder Stabiliser



Helps to make any extension ladder
safer and easier to use. Wide stance
increases stability on even ground, and
quickly adjusts to uneven terrain. For
professionals and homeowners who
value safety, time and convenience

Code	Price (£)
LA22	29.99

Titan Racktite Roof Clamps

Strong clamps to secure ladders to vehicle roof racks.
Supplied with 2 padlocks.

Code	Price (£)
LOK02	24.95 ea

Scaffold Bumper

260mm diameter fibre bumpers (No Nocs Bumper) for
edge protection on Podiums and Towers

Code	Price (£)
SB1	8.75 ea

Handrail Bumper

2m length fibre bumpers (No Nocs Bumper) for
handrail protection on Podiums and Towers

Code	Price (£)
HB1	5.75 ea

Popup Electric Scissor Platform 12 volt DC

The Popup is the most competitively priced
scissor lift on the market ideal for low level
electric access. No formal training required.
Tested to EN280

Code	Price (£)
POPUP1	2975.00



TECHNICAL SPECIFICATIONS

Safe working load (SWL)	240kg
Maximum platform height	1.63 metres
Approximate working height	3.63 metres
Platform length	1.01 metres
Platform width	0.52 metres
Platform guard rail height	1.10 metres
Electrical system	
Voltage	12 volt
DC Motor	0.7kW
Battery	80Ah

ITW Heller Prefix SDS+ Drill Bits



High quality, twin fluted SDS+ carbide drill bit that fits all SDS+ rotary hammers (sold per pack at unbeatable prices)

Code	Size	Pack Size	Price (£)
253406	4 x 160mm	25	22.25
253413	5 x 110mm	25	19.95
253420	5 x 160mm	25	21.95
253437	5.5 x 110mm	25	19.95
253444	5.5 x 160mm	25	21.95
253451	5.5 x 210mm	25	26.95
253468	6 x 110mm	25	19.95
253475	6 x 160mm	25	22.95
253482	6 x 210mm	25	27.50
253499	6.5 x 160mm	25	21.95
253505	6.5 x 210mm	25	34.95
253529	7 x 160mm	25	25.95
253543	8 x 110mm	25	26.95
253550	8 x 160mm	25	28.95
253604	10 x 160mm	10	12.95
253611	10 x 210mm	10	15.95
253659	12 x 160mm	10	15.95
253666	12 x 210mm	10	17.95
253703	14 x 210mm	10	23.95
253741	16 x 210mm	10	27.95
186896	18 x 300mm	1	6.75
186902	20 x 300mm	1	11.74
156509	22 x 450mm	1	14.45
156547	26 x 450mm	1	18.54

PH2 Screwdriver Bits (per 100)

No. 2 Phillips Stub Screwdriver Bit - 1/4" Drive. Overall Length: 25mm

Code	Price (£)
DIBPH2	14.50

PZ2 Screwdriver Bits (per 100)

No. 2 Pozi Stub Screwdriver Bit - 1/4" Drive. Overall Length: 25mm

Code	Price (£)
DIBPO2	14.50

ITW Heller HSS Twist Drill Bits



High quality HSS drill bit for use in wood, plastic and metal. (sold per pack at unbeatable prices)

Code	Size	Pack Size	Price (£)
184601	2.0mm	10	2.20
184656	2.5mm	10	2.50
184700	3.0mm	10	2.90
184755	3.5mm	10	3.70
184809	4.0mm	10	3.90
184854	4.5mm	10	4.30
184908	5.0mm	10	4.80
184953	5.5mm	10	5.10
185004	6.0mm	10	5.40
185059	6.5mm	10	7.40
185103	7.0mm	10	8.70
185202	8.0mm	10	9.10
185400	10.0mm	10	11.40
185486	12.0mm	5	8.60
185561	14.0mm	5	12.50
185646	16.0mm	5	17.45

ITW Heller Tile and Glass Drill Bits



Ceramic bit with 1/4" hexagonal quickbit shank for accurate drilling into sensitive materials.

Code	Size	Price (£)
500913	3.0mm	2.36
500920	4.0mm	2.36
500937	5.0mm	2.51
500944	6.0mm	2.82
500951	6.5mm	2.94
500968	8.0mm	3.33
500975	10.0mm	4.55
500982	13.0mm	5.99

ITW Heller Flat Wood Milling Bits



Premium wood drilling bit with hardened wings and 1/4" hexagonal quickbit shank.

Code	Size	Price (£)
190534	6.0mm	1.62
190541	8.0mm	1.99
190558	10.0mm	2.45
190572	14.0mm	3.08
190596	18.0mm	3.94
190626	24.0mm	4.65
190657	30.0mm	5.27
217903	40.0mm	5.99

ITW Heller Rebar Cutter Reinforcement Drill Bit



Drills fast without problems in all standard reinforcement. Recessed and individually soldered tungsten carbide teeth for durability and quick advance. Surface treated using the Heller HST process. To be used in conjunction with the SDS Plus adaptor

Code	Size	Total Length	Price (£)
246002	12 mm	230 mm	45.19
246026	16 mm	230 mm	58.01
246033	18 mm	230 mm	63.46
246040	20 mm	230 mm	68.81
246057	25 mm	230 mm	75.36
246071	30 mm	230 mm	85.04

SDS Plus Ratio Adaptor for Rebar Bits



Tool Holder: SDS+ / 18mm
Other sizes available

Code	Price (£)
RRA2260	19.95

Rebar Cutter Drill Bit Set

Set Includes: 14, 16 and 18mm x 230mm Rebar Drill bits plus 1 adaptor in a case

Code	Price (£)
245999	119.95

ITW Heller Bi-Metal Holesaws



HSS Bi-metal Holesaw with variable depth teeth for fast and clean cutting. Ideal for cutting clean holes in steel, stainless steel, die cast metals, nail embedded wood etc.

Code	Size	Price (£)
119030	14.0mm	2.24
119047	16.0mm	2.26
190718	19.0mm	2.45
190732	22.0mm	2.91
199087	27.0mm	3.84
190763	32.0mm	4.94
199117	37.0mm	5.05
190794	40.0mm	5.11
190800	44.0mm	5.39
199155	48.0mm	5.47
190824	54.0mm	5.50
190831	57.0mm	5.69
190848	60.0mm	5.85
190855	64.0mm	6.08
190862	68.0mm	6.15
190886	76.0mm	6.30
190909	89.0mm	7.24
190916	102.0mm	10.29
199285	114.0mm	12.10
199308	127.0mm	14.76
199322	152.0mm	19.85
199680	168.0mm	47.00
199677	177.0mm	57.66
199210	210.0mm	68.50

Arbors with HSS Pilot Bit to suit Holesaws



Code	Size	Price (£)
190930	14-30mm Hex	5.83
100700	14-30mm SDS	5.83
190947	32-152mm Hex	7.85
100717	32-152mm SDS	7.85
100899	32-210mm SDS	19.85

ITW Heller Jigsaw Blades



High quality Bayonet Mount jigsaw blades. See table below for details. Priced in packs of 5. * Universal Mount (T118G = Steel / T118BF = Bi-Metal)

Bosch Code	TPI	Toothed Length	Price (£)
T119B	13TPI	50mm	2.53
U111C*	8TPI	75mm	2.60
T144D	6TPI	75mm	3.50
T118G	36TPI	50mm	4.32
T118BF	13TPI	50mm	5.75
T101BA	10TPI	75mm	6.89

ITW Heller Recip Saw Blades



High quality recip saw blades. See table below for details. Priced in packs of 5. (* Bi-metal)

Bosch Code	TPI	Toothed Length	Price (£)
S644D	6TPI	150mm	5.08
S1531L	5TPI	250mm	7.56
S1344D	6TPI	300mm	8.79
S922BF*	14TPI	150mm	6.25
S1122BF*	14TPI	200mm	8.74
S1211H*	10TPI	300mm	9.75

Trend CraftPro TCT Wood & Wood Based Materials Sawblades



A complete range of Tungsten Carbide Tipped Circular saw blades for a professional finish in wood, MDF, Particle board, hardboard and plywood. Used by professional tradesmen. Blade sizes from 125 to 350mm catering for cordless trim saws to bench saws. All blades have a bore of 30mm unless otherwise stated.

* Bore is 20mm

** Bore is 16mm

Less Teeth:

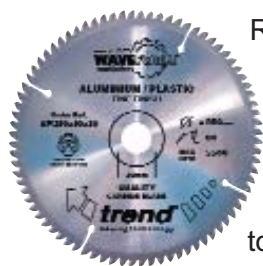
- Preferred for ripping along the grain of hard and soft wood and other wood based materials.
- Coarser finish
- Faster feed rate.

More Teeth:

- Preferred for cutting across grain of hard and soft wood.
- Finer finish
- Slower feed rate.

Code	Teeth	Dia.	Price (£)
CSB/12512*	12	125mm	9.10
CSB/13424*	24	134mm	9.80
CSB/14024*	24	140mm	10.15
CSB/15012A	12	150mm	10.50
CSB/15324*	24	153mm	11.20
CSB/16024*	24	160mm	11.20
CSB/18024	24	180mm	11.55
CSB/18040	40	180mm	11.90
CSB/18424**	24	184mm	12.25
CSB/18430A	30	184mm	12.95
CSB/18458	58	184mm	13.30
CSB/19012	12	190mm	13.30
CSB/19040	40	190mm	13.30
CSB/20024	24	200mm	15.40
CSB/21048	48	210mm	15.75
CSB/21548	48	215mm	16.10
CSB/23024	24	230mm	16.10
CSB/23040	40	230mm	17.15
CSB/23540	40	235mm	17.15
CSB/24024	24	240mm	17.50
CSB/25048	48	250mm	19.95
CSB/25080	80	250mm	24.35
CSB/30032	32	300mm	22.75
CSB/31524	24	315mm	24.15
CSB/35064	64	350mm	29.30

Trend CraftPro TCT Aluminium/Plastic Blades



Reamed bore. Front bevel tooth form. Silverbrazed. Microgranular Tungsten Carbide Tipped. Body is hardened and tempered to maintain trueness. High grade alloy steel plate body precision ground to maintain flatness. Blades have a negative hook angle. Alternate top

bevel tooth form. Fine finish for plastic and aluminium. Anti-kickback with thin kerf for cordless saws.

Code	Teeth	Dia.	Price (£)
CSB/AP13630T*	30	136mm	17.25
CSB/AP13636TB*	36	150mm	17.63
CSB/AP16536TA*	36	165mm	18.38
CSB/AP18458**	58	184mm	18.75
CSB/AP18458A	58	184mm	18.75
CSB/AP21564	64	215mm	25.50
CSB/AP25084	84	250mm	33.00
CSB/AP25480	80	254mm	31.50
CSB/AP25496	96	254mm	36.00
CSB/AP30096	96	300mm	39.00
CSB/AP30584	84	305mm	33.00
CSB/AP31596	96	315mm	39.00
CSB/AP350108	108	350mm	47.25

Flat Cutting Discs for Metal



Blades must be used in accordance with the Abrasive Wheels Regulations 1970 and Amendments and the Health and Safety at Work Act 1974.

Using extra pressure to cut can cause overheating damage to the blade and is a safety risk.

Code	Dia.	Bore	Price (£)
TAMF100C	100mm	16mm	0.52
TAMF115C	115mm	22mm	0.55
TAMF125C	125mm	22mm	0.63
TAMF180C	180mm	22mm	0.78
TAMF230C	230mm	22mm	0.83
TAMF300C	300mm	22mm	1.40
TAMF350C	350mm	25.4mm	3.02

Depressed Centre Grinding Discs for Stone and Concrete



Blades must be used in accordance with the Abrasive Wheels Regulations 1970 and Amendments and the Health and Safety at Work Act 1974.

Assorted disc types

Code	Dia.	Bore	Price (£)
TACDC110G	110mm	16mm	0.62
TACDC115G	115mm	22mm	0.75
TACDC125G	125mm	22mm	0.81
TACDC180G	180mm	22mm	1.22
TACDC230G	230mm	22mm	1.85

Flat Cutting Discs for Stone and Concrete



Blades must be used in accordance with the Abrasive Wheels Regulations 1970 and Amendments and the Health and Safety at Work Act 1974.

Using extra pressure to cut can cause overheating damage to the blade and is a safety risk.

Code	Dia.	Bore	Price (£)
TACF110C	100mm	16mm	0.54
TACF115C	115mm	22mm	0.57
TACF125C	125mm	22mm	0.67
TACF180C	180mm	22mm	0.81
TACF230C	230mm	22mm	0.88
TACF300C	300mm	22mm	1.44
TACF30020C	300mm	20mm	1.44
TACF350C	350mm	22mm	3.29

We also stock a large range of **Diamond Blades** at extremely competitive prices for example:

TX10R Superior Diamond Blade 9" = £27.50 + VAT or the DS12 Double Six Diamond Blade at £18.95 +VAT!!!

Helly Hansen Uppsala Jacket



An extremely hard wearing jacket with good freedom of movement for working in very cold conditions, a very stylish, smart and versatile jacket.

Colour: Black

Sizes: S-XL

Code

76301

Price (£)

56.50

Helly Hansen Ashford Service Trousers



A modern stylish traditional tradesman pant. Designed and built to look good and last through the toughest working conditions.

65% Polyester, 35% Cotton

Colour: Black, Navy Blue

Sizes: C44-C62 Regular Leg

- C144-C162 Longer Leg

Code

76447

Price (£)

24.93

Helly Hansen Hannover Jacket



A stylish versatile, thin-lined, lightweight jacket. Suitable for those that are working in environments that change from indoor to outdoor.

Colour: Black

Sizes: S-XL

Code

71110

Price (£)

41.00

Helly Hansen Ashford Kneepad Trousers



Cordura has been used for the knee pad and tool pockets, this along with the use of bartacks at weak points results in a high performance garment.

Colour: Black, Navy Blue

Sizes: C44-C62 Regular Leg

- C144-C162 Longer Leg

Supplied with knee pads

Code

76438

Price (£)

32.50

Helly Hansen Ashford Tool Vest



A modern stylish version of the traditional tradesman tool vest. Strategically bartacked for maximum strength with the added benefit of Cordura on all pockets.

Colour: Navy Blue, Black

Sizes: M-XXL

Code

76354

Price (£)

33.50

Fristads Profile BKP-237 Cargo Shorts



Practical and functional, these shorts are exactly what you need for hot working conditions where you still need to look smart and professional

Colour: Navy, Black and Khaki

Sizes: C44 - C62 (Waist 30" - 47")

Code

BKP-237

Price (£)

19.90

Poly/Cotton Stud Front Boilersuit



65/35 : poly/cotton. Concealed stud fastening front closure. Two breast pockets with stud fastening flap. Two hip swing pockets with access to undergarments. Available in Navy Blue, Bottle Green

Sizes: M-XXL

Disposable boilersuits also available (Code: DBS-P01) in Red, Blue and White.

Code

S999

Price (£)

12.30

DBS-P01

1.75

Helly Hansen Kingston Sweater - Micro Fleece



A lightweight casual micro fleece sweater, ideal for cooler days

Colour: Black

Sizes: S-XXL

Code

72042

Price (£)

26.00

Bolton Painters Bib & Brace Suit



Bib pocket with zip. One large front pocket. Knee pad pockets. Hip and rule pockets. Elasticated straps. Plastic buckles.

Fabric: 100% cotton

Sizes: M - XXL

Code	Price (£)
S810	14.50

Painters Trousers



Two side pockets. Multi-layered thigh pocket with mobile phone pocket. Knee pad pockets. Hip and rule pockets. Elasticated back waist for comfort.

Fabric: 100% cotton

Sizes: M - XXL

Code	Price (£)
S817	12.50

Turin Premium T-Shirt

Taped neckline. Full cut styling.

Fabric: 100% cotton 195g

Sizes: M - XXL

Colours: Royal blue, Black, White.



Code	Price (£)
B195	2.75

Naples Polo Shirt

Pique Knit fabric. Three button placket. Rib knit collar and cuffs.

Fabric: 65% polyester 35% cotton 210g

Sizes: M - XXL

Colours: Royal blue, Black, Grey, Bottle Green.



Code	Price (£)
B210	6.75

Disposable Overshoes - per 100



Code	Price (£)
DOS10	5.99

Class 3 Lightweight Gore-Tex Jacket



Conforms to EN343 Class 3 for water penetration and breathability. Concealed fold away hood, double storm flap with 2 way zip, mesh lined, large front pockets with flaps, inner map/mobile pocket with zip.

Colours: Yellow, Orange

Sizes: S - XXL

Code	Price (£)
FRGTJ03	129.50

EN471 Executive Breathable Jacket



Zip front with chin guard, double storm flap, attached mesh lined hood in collar, internal patch pocket, sleeve pockets with zip, studded side vents, Welt pocket with concealed ID holder, radio pocket and D-ring, fleece lined collar and inner cuffs. High Quality Jacket well priced.

Colours: Yellow / Navy, Orange / Navy

Sizes: M - XXL

Fabric: 100% Polyester, 300D Oxford Weave, stain resistant finish, PU Coated Breathable EN471 certified.

Code	Price (£)
S760	49.95

Standard HiVis Rucksack



Multiple pockets, re-inforced adjustable straps, waist straps, 5cm reflective tape, padded back panel, mobile phone pocket, weatherproof mp3 CD and mobile phone outlet. Certified to EN471

Size: L28 x W21 x H43cm

Colours: Yellow, Orange

Code	Price (£)
B905	18.25

For all High Visibility clothing see Pages 39-40

Travel and Holdall Bags



ID holder, studded base, 2 zipped compartments and adjustable shoulder strap.

Code	Size	Price (£)
B903	48x23x32xm	9.95
B900	68x25x39xm	13.85

First Aid Kits



HSE approved first aid kits supplied in a plastic box. Available in 1-10 person (SBFK10), 1-20 person (SBFK20), 1-50 person kits (SBFK50).

	SBFK10	SBFK20	SBFK50
First Aid Guidance Leaflet	1	1	1
Adhesive Plasters	20	40	60
N016 Sterile Eye Pad	2	4	6
Triangular Bandages	2	4	6
Safety Pins	6	12	12
Sterile Dressing 12 x 12cm	6	9	10
Sterile Dressing 18 x 18cm	2	3	4
Alcohol Free wipes	6	10	20
Disposable Gloves (pair)	1	2	3
Price (£)	9.75	16.56	28.50

JSP Sterile Eyewash Wall Station



A wall mounted mirror dispenser holding two 500ml bottles, Easy to deploy/use in emergencies

Code

Price (£)

ASE010

17.90

JSP 30 Litre Oil Spill Kit



Kit Contents: 20 Pads to soak up oil, 4 Socks to contain and adsorb oil, 4 Disposable bags and ties, 1 Instruction sheet

Code

Price (£)

PKQ060

26.75

JSP 90 Litre Oil Spill Kit



Kit Contents: 1 Container with lid, 1 Caution tape, 12 Oil socks to contain and adsorb oil, 3 Pillows to adsorb oil, 35 Pads to adsorb oil, 5 Disposable bags and ties, 1 Instruction sheet, 1 Wall mounting bracket

Code

Price (£)

PKQ110

77.85

JSP 30 Litre Chemical Spill Kit



Kit Contents: 25 Pads to soak up chemical, 4 Socks to contain and adsorb chemical, 4 Disposable bags and ties, 1 Instruction sheet

Code

Price (£)

PKC060

29.95

JSP 90 Litre Chemical Spill Kit



Quick response spill kit for use anywhere a chemical spillage of up to 90 litres might occur. Packed in weather-proof, yellow, moulded container manufactured from UV Stabilised material, with wall mounting bracket, cord to secure lid, labels and instructions.

Code

Price (£)

PKC110

96.45

ABX10 Treated Wood Fibre Absorbent Granules



Absorbent Granules - Fire Retardant to BS476 Pt7, Easy to Clean up, leaves no residue, Environmentally Friendly, Ideal For use in factories, laboratories, workshops etc. Adsorbs oil, grease, and other liquid spillages 3-5 times more absorbent than clay granules, price per 30 ltr bag

Code

Price (£)

ABX10

7.79

Janitorial Accessories

Code	Description	Price (£)
JDC10	Dish Cloths - 10 pack	1.95
JJC10	J Cloths - 10 Pack	1.95
JHT10	Hand Towels - per 2500 box	17.50
JTR36	Toilet Roll - 36 Rolls	7.50
JTB5L	Thick Bleach - 5L	3.75
JWL5L	Washing Up Liquid - 5L	3.25
JMC75	Multi-Purpose Cleaner - 750ml	2.50
JAF20	Air Freshener Aerosol	2.20
JAB500	Anti-Bacterial Handwash -500ml	2.50

Zinc Drywall Screws - Point



* wafer head screws

Code	Size	Price (£) / 1000
DW13WH*	4.2 x 13mm	3.54
DW25	3.5 x 25mm	1.99
DW32	3.5 x 32mm	2.33
DW38	3.5 x 38mm	2.80
DW42	3.5 x 42mm	3.25
DW50	3.5 x 50mm	3.97
DW65	4.2 x 65mm	6.37
DW75	4.2 x 75mm	8.49
DW100	4.2 x 100mm	19.72
DW125	4.2 x 125mm	38.07

Zinc Drywall Screws - Self Drilling



* wafer head screws

Code	Size	Price (£) / 1000
SDW13WH*	4.2 x 13mm	3.99
SDW25WH*	4.2 x 25mm	8.50
SDW25	3.5 x 25mm	3.60
SDW32	3.5 x 32mm	3.93
SDW38	3.5 x 38mm	4.27
SDW42	3.5 x 42mm	5.08
SDW50	3.5 x 50mm	5.51
SDW65	4.2 x 65mm	8.70
SDW75	4.2 x 75mm	10.32

Zinc Collated Drywall Screws Fine Thread



* self drilling screws

Code	Size	Price (£) / 1000
CDW25	3.5 x 25mm	5.99
CDW32	3.5 x 32mm	6.59
CDW38	3.5 x 38mm	7.99
CDW42	3.5 x 42mm	8.29
CDW50	3.5 x 50mm	8.99
CDW75	4.2 x 75mm	15.29
CSDW25*	3.5 x 25mm	8.75
CSDW35*	3.5 x 35mm	10.55
CSDW50*	3.5 x 50mm	12.79

Plastic Hammer Fixings



* large head

Code	Size	Price (£) / 100
HF530	M5 x 30mm	1.63
HF550	M5 x 50mm	1.71
HF640	M6 x 40mm	1.86
HF640LH*	M6 x 40mm	2.49
HF650	M6 x 50mm	2.31
HF660	M6 x 60mm	2.89
HF680	M6 x 80mm	3.15
HF860	M8 x 60mm	2.92
HF880	M8 x 80mm	4.61
HF8100	M8 x 100mm	5.51
HF8120	M8 x 120mm	7.09
HF8140	M8 x 140mm	8.88

Buildex Hex Head Tek Screws



Code	Size	Cut Depth	Price (£) / 100
TC16	4.8 x 16mm	1.2 - 3.5mm	1.99
TC25	5.5 x 25mm	1.2 - 3.5mm	2.55
TC32	5.5 x 32mm	1.2 - 3.5mm	2.97
TC38	5.5 x 38mm	1.2 - 3.5mm	3.45
TC50	5.5 x 50mm	1.2 - 3.5mm	3.84
TC62	5.5 x 62mm	1.2 - 3.5mm	4.78
TC75	5.5 x 75mm	1.2 - 3.5mm	5.57
TC100	5.5 x 100mm	1.2 - 3.5mm	6.99
TL32	5.5 x 32mm	4.0 - 12.5mm	5.09
TL38	5.5 x 38mm	4.0 - 12.5mm	5.81
TL50	5.5 x 50mm	4.0 - 12.5mm	6.95
TL75	5.5 x 75mm	4.0 - 12.5mm	7.57
TL100	5.5 x 100mm	4.0 - 12.5mm	9.88

Standard Wall Plugs - per 1000



Tough, high density polythene plugs provide a secure wall fixing. Supplied in a box of 1000. Available in 6-8ga Red and 8-10ga Brown

Code	Description	Price (£)
SBXWPR	Red	3.91
SBXWPB	Brown	5.31

Timberfix Countersunk Screws



Code	Size	Price (£) / 100
TBF38	4.2 x 38mm	2.19
TBF45	4.8 x 45mm	2.92
TBF50	5.5 x 50mm	3.97
TBF62	5.5 x 62mm	4.55
TBF80	5.5 x 80mm	5.91
TBF100	5.5 x 100mm	7.48
TBF120	5.5 x 120mm	12.89

Decking Screws - Square Drive



* Stainless steel

Code	Size	Price (£) / 200
DSFHC40	4.2 x 40mm	2.59
DSFHC50	4.2 x 50mm	2.91
DSFHC63	4.2 x 63mm	3.49
DSFHC75	4.2 x 75mm	4.79
DSFHC90	4.2 x 90mm	7.99
DSSSC50*	4.2 x 50mm	7.75
DSSSC63*	4.2 x 63mm	8.45

Setting Tools for Drop in Anchors



Code	Size	Price (£)
62090	M6	5.29
62100	M8	5.45
62110	M10	5.74
62120	M12	6.95
62130	M16	7.75

Drop in Anchors



Code	Size	Price (£) / 100
DA625	M6 x 25mm	4.75
DA830	M8 x 30mm	5.89
DA1040	M10 x 40mm	6.95
DA1250	M12 x 50mm	11.99
DA1665	M16 x 65mm	24.55
DA2080	M20 x 80mm	49.77

Metal Nailins and Ceiling Anchors



* ceiling anchors

**wirehanger nailins

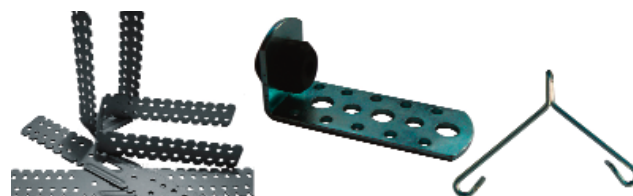
Code	Size	Price (£) / 100
MN630	M6 x 30mm	3.78
MN640	M6 x 40mm	4.49
MN650	M6 x 50mm	5.21
MN665	M6 x 65mm	8.99
EVDBZ640*	M6 x 40mm	4.89
EVDBZ665*	M6 x 65mm	9.05
WH6**	M6 x 60mm	4.25

Plasterboard Anchors inc Screws



Code	Size	Max Fixture Thickness	Price (£) / 100
PA1232	12 x 32mm	12mm	6.75
PA1238	12 x 38mm	12mm	7.95
PA1243	12 x 43mm	12mm	8.75
TF30	5.5 x 62mm	30mm	19.75

Brackets and Connectors



Code	Size	Price (£) / 100
CB1	Ceiling Bracket 25 x 25mm	2.49
GL2	29.5 x 195mm GL2 Bracket	6.99
GL9	29.5 x 295mm GL9 Bracket	8.99
GL3	GL3 Channel Connector	8.75
MF9	MF9 Furring Channel Clips	4.49
GL5	GL5 Timber Connector	7.99
VFC1	Vertical Flange Clip 1-5mm	8.74
VFC5	Vertical Flange Clip 5-7mm	32.75

If you cannot find what you are looking for, please visit our online store at www.sitebox.ltd.uk for our full range of fixings.

Pozi Roofing Nuts and Bolts



Machine Screws also available, please replace RF with MS in the product code.

Code	Size	Price (£) / 100
RFNBM612	M6 x 12mm	1.95
RFNBM616	M6 x 16mm	1.99
RFNBM620	M6 x 20mm	2.25
RFNBM625	M6 x 25mm	2.39
RFNBM640	M6 x 40mm	2.60
RFNBM6100	M6 x 100mm	2.80
RFNBM820	M8 x 20mm	3.95
RFNBM840	M8 x 40mm	5.62
RFNBM870	M8 x 70mm	7.70
RFNBM8100	M8 x 100mm	8.81

Full Hexagon Nuts



Code	Size	Price (£) / 100
HNM4	M4	0.34
HNM6	M6	0.65
HNM8	M8	0.99
HNM10	M10	1.96
HNM12	M12	3.32
HNM16	M16	4.94
HNM20	M20	9.15

Channel Nuts



Code	Size	Price (£) / 100
PCN6	M6 Plain	6.75
PCN8	M8 Plain	7.48
PCN10	M10 Plain	7.82
SSCN6	M6 Short Spring	7.47
SSCN8	M8 Short Spring	7.75
SSCN10	M10 Short Spring	8.83
LSCN6	M6 Long Spring	7.99
LSCN8	M8 Long Spring	8.37
LSCN10	M10 Long Spring	9.45

Square Plate and Penny Washers



Code	Size	Price (£) / 100
PWM6	M6 x 25mm Penny	0.97
PWM8	M8 x 25mm Penny	1.12
PWM10	M10 x 25mm Penny	1.27
SWM8	M8 x 40mm Sq Plate	6.70
SWM10	M10 x 40mm Sq Plate	7.20
SWM12	M12 x 40mm Sq Plate	7.70

Hex Set Screws



Code	Size	Price (£) / 100
HEXSETM612	M6 x 12mm	1.69
HEXSETM616	M6 x 16mm	1.83
HEXSETM620	M6 x 20mm	1.89
HEXSETM625	M6 x 25mm	2.11
HEXSETM630	M6 x 30mm	2.20
HEXSETM640	M6 x 40mm	2.25
HEXSETM650	M6 x 50mm	2.99
HEXSETM680	M6 x 80mm	3.95
HEXSETM6100	M6 x 100mm	4.45
HEXSETM825	M8 x 25mm	2.95
HEXSETM840	M8 x 40mm	3.25
HEXSETM860	M8 x 60mm	5.69
HEXSETM8100	M8 x 100mm	8.99
HEXSETM1025	M10 x 25mm	5.25
HEXSETM1040	M10 x 40mm	6.95
HEXSETM1080	M10 x 80mm	8.50
HEXSETM1225	M12 x 25mm	6.99
HEXSETM1260	M12 x 60mm	10.10
HEXSETM1660	M16 x 60mm	17.99

Wedge Nuts



Code	Size	Price (£) / 100
WN06	M6	9.75
WN08	M8	10.25
WN10	M10	10.75

Gripple Packs

Code	Size	Price (£)
GR0101	No.1 x 1m Loopend	1.95
GR0102	No.1 x 2m Loopend	2.25
GR0201	No.2 x 1m Loopend	2.32
GR0202	No.2 x 2m Loopend	2.65

Threaded Rod - 3m Lengths

Code	Size	Price (£)
TRM6	M6 x 3m	1.00
TRM8	M8 x 3m	1.40
TRM10	M10 x 3m	1.75
TRM12	M12 x 3m	2.75

2 Part Alpha Wedge Nuts



Code	Size	Price (£) / 10
AWN06	M6	10.89
AWN08	M8	10.89
AWN10	M10	10.89

Washed Pins to suit Hilti DX450



Code	Size	Price (£) / 100
RHM14K	3.7 x 14mm	7.92
RHM16K	3.7 x 16mm	8.56
RHM19K	3.7 x 19mm	9.17
RHM22K	3.7 x 22mm	9.38
RHM27	3.7 x 27mm	9.58
RHM32	3.7 x 32mm	10.19
RHM37	3.7 x 37mm	10.80
RHM42	3.7 x 42mm	11.41
RHM47	3.7 x 47mm	11.62
RHM54	3.7 x 54mm	12.63
RHM62	3.7 x 62mm	13.45
RHM72	3.7 x 72mm	15.08
RHM82	3.7 x 82mm	19.36
RHM97	3.7 x 97mm	21.80

ITW Spit P370 Consumables



Code	Description	Price (£) per 100
11340	SC9-15C Collated Steel/Concrete	7.29
11341	SC9-20C Collated Steel/Concrete	8.42
11342	SC9-25C Collated Steel/Concrete	8.96
11343	SC9-30C Collated Steel/Concrete	9.32
11344	SC9-35C Collated Steel/Concrete	9.65
11345	SC9-40C Collated Steel/Concrete	9.81
11346	SC9-50C Collated Steel/Concrete	10.09
11347	SC9-60C Collated Steel/Concrete	10.79
32580	C9-70 Single Concrete Pins	11.52
32590	C9-80 Single Concrete Pins	13.28
32600	C9-90 Single Concrete Pins	14.94
31740	Brown Shot (Very Low Power)	6.95
31600	Green Shot (Low Power)	6.95
31700	Yellow Shot (Medium Power)	6.95
11658	Red Shot (High Power)	6.95

H Washered Pins to suit Hilti DXA40/DXA41/DX460



Code	Size	Price (£) / 100
RHP16K	3.8 x 16mm	7.45
RHP19K	3.8 x 19mm	8.36
RHP22	3.8 x 22mm	8.56
RHP27	3.8 x 27mm	9.17
RHP32	3.8 x 32mm	10.19
RHP37	3.8 x 37mm	10.80
RHP42	3.8 x 42mm	11.21
RHP47	3.8 x 47mm	11.41
RHP52	3.8 x 52mm	12.23
RHP57	3.8 x 57mm	12.63
RHP62	3.8 x 62mm	13.25
RHP72	3.8 x 72mm	14.67

Hilti Compatible Strip Cartridges



Suitable for TS750P / TS60P / S75A / S75 / DX450 / DX460 DXA40 and DXA41

Code	Power	Price (£) / 100
920133	Green - Low	6.75
920132	Yellow - Low / Medium	6.75
920131	Red - Medium / High	6.75
920130	Black - Extra High	6.75

ITW Spit Pulsa 700 Nail and Fuel Kits



Each kit contains 500 nails and 1 fuel cell.

Code	Size	Price (£)
46300	SC6-15mm	49.00
46310	SC6-20mm	49.00
46320	C6-25mm	49.00
46330	C6-30mm	49.00
46340	C6-35mm	49.00
46350	C6-40mm	49.00

Pulsa Compatible Kits also available from stock 15mm to 40mm from £35 +VAT (500 nails, 1 fuel cell)

Code: STEK01 please quote size when ordering

ITW Paslode IM65 Nail and Fuel Kits

Each kit contains 2000 nails and 2 fuel cells.



Code	Size	Price (£)
921585	16mm Straight Nail Kit	9.58
921587	25mm Straight Nail Kit	10.60
921588	32mm Straight Nail Kit	10.76
921589	38mm Straight Nail Kit	11.54
921590	45mm Straight Nail Kit	12.10
921591	50mm Straight Nail Kit	12.63
921592	63mm Straight Nail Kit	14.52

ITW Paslode IM200 Staple and Fuel Kits



Each kit contains 2100 staples and 3 fuel cells.

Code	Size	Price (£)
921367	16mm	16.85
921369	25mm	17.91
921370	35mm	19.41
921371	50mm	21.32

ITW Paslode IM65A Brad and Fuel Kits



Each kit contains 2000 nails and 2 fuel cells.

Code	Size	Price (£)
300270	32mm Angled Brad Kit	11.83
300271	38mm Angled Brad Kit	12.69
300272	45mm Angled Brad Kit	13.46
300273	51mm Angled Brad Kit	13.90
300274	63mm Angled Brad Kit	15.52

ITW Paslode IM350 Nail and Fuel Kits



Code	Size	Price (£)
141202	51mm Bright Ring Nail Kit 3300 nails 3 fuel cells	37.75
141208	63mm Bright Ring Nail Kit 3300 nails 3 fuel cells	39.75
141226	75mm Bright Ring Nail Kit 2200 nails 2 fuel cells	33.75
141233	90mm Bright Straight Nail Kit 2200 nails 2 fuel cells	32.95

Pulsa and Paslode tools and accessories on Page 30

Plastic Packing Long Shims - per 1000



Plastic packing shims provide a method of spacing or supporting cladding rails, battens, brackets and other cladding components on surfaces that are uneven or out of line. Size (below) x 50mm x 100mm

Code	Size	Colour	Price (£)
PSPL01	1mm	Yellow	30.90
PSPL02	2mm	Green	41.84
PSPL03	3mm	Blue	42.05
PSPL04	4mm	Red	52.00
PSPL05	5mm	Brown	62.42
PSPL10	10mm	Grey	101.85

Plastic Packing Horseshoe Shims - per 1000



Horseshoe shims are moulded to fit around a fastener, or can be fixed through the openings in the body. Plastic packing shims provide a method of spacing or supporting cladding rails, battens, brackets and other cladding components on surfaces that are uneven or out of line. Size (below) x 40mm x 45mm

Code	Size	Colour	Price (£)
PSPH01	1mm	Yellow	22.95
PSPH02	2mm	Green	22.99
PSPH03	3mm	Blue	33.79
PSPH04	4mm	Red	37.99
PSPH05	5mm	Brown	42.88
PSPH10	10mm	Grey	68.25

Trend Biscuits - Box of 1000



The biscuits are made from die cut beech. Beechwood Biscuits expand when in contact with a woodworking adhesive such as PVA glue

Code	Size	Board Thickness	Price (£)
TREBSC00	No. 0	8 - 12mm	26.50
TREBSC10	No. 10	13 - 18mm	27.75
TREBSC20	No. 20	19mm+	29.95

ITW Spit Epomax Vinylester Resin - Grey



10:1 Fast curing vinylester resin injection system. M8 - M30 Stud range. Conforms to ETA Option 7 / part 5 for BZP and Stainless steel. Fire tested. Improved formula reducing pumping effort by 30%. Available in either 160ml or 380ml cartridges.

Code	Size	Price (£)
050883	160ml	9.87
050885	380ml	14.25

ITW Spit Epomax Application Tool



Injection tool for application of Epomax Resin

Code	Price (£)
077151	29.55

Rose Head Threaded Studs - Box of 10



Zinc Plated grade A4 45° single cut

Code	Diameter	Length	Price (£)
050950	M8	110mm	5.08
050960	M10	130mm	6.99
050970	M12	160mm	8.45
050980	M16	190mm	13.11
655220	M20	260mm	28.45
655240	M24	300mm	58.50

ITW Spit Epomax Vinylester Resin - Box of 10



Measured methacrylate resin, catalytic hardener and quartz aggregate sealed in a glass tube. Styrene free. ETA Option 7 approved.

Code	Diameter	Length	Price (£)
051500	M8	80mm	4.97
051510	M10	90mm	5.80
051520	M12	110mm	6.42
051530	M16	105mm	8.91
051540	M20	170mm	11.75
051550	M24	210mm	15.20

Skipper Retractable Barrier Tape - 9m

High visibility retractable tape unit that fits onto most traffic cones. Locking button prevents spooling. Area of 40m² can be cordoned off with three units. Can be permanently attached to the cone
Yellow/Black tape colour is also available.

Code**Price (£)**

SKBT/9M

39.99

Skipper LED Warning Light

Attaches directly to the top of the Skipper Unit. Light reflective surfaces. Flashing or permanent light settings. Optional low light activation. Rechargeable. Battery 43 hours flashing / 35 hours constant.

Code**Price (£)**

SKTL/01

22.50

Other Skipper accessories available to order.

JSP Titan Interlockable Safety Barriers

One piece injection moulded stackable barrier with linking facility and swivel feet. Facility to attach road danger lamps. Available in 2m (KBA073) and 1.5m (KBA053) lengths.

Code**Price (£)**

KBA053

34.50

KBA073

39.50

Safegate Barrier System - 4 Gate

Chapter 8 barrier system comprises a set of high-visibility, hinged metal gates and is ideal for use around manhole repairs, cable laying and other temporary excavations.

Code**Price (£)**

SGBS04

48.95

JSP Minilite - Traffic Management Lamp

Single battery lamp, 360 degrees lens for all round light visibility. Tough moulded polycarbonate lens resistant to impact damage. (FNPC) Flashing non Photo Cell. Batteries not included

Code**Price (£)**

LEH010

3.75

JSP Road Cones

Various types of cone available. One piece PVC cone - 450mm (CO450), "No Waiting" cones (JAD081), 2 Part heavy duty cone - 750mm (CO750).

Code**Price (£)**

CO450

3.49

CO750

6.75

JAD081

7.95

JSP Yellow Workgates

Yellow plastic interlocking workgates for sectioning off small areas. Comes with reflective top panels and can be used as a rectangular section as shown or a straight barrier. Panel Size (H x W): 1000 x 840mm. Also available with four gates.

Code**Size****Price (£)**

KBB023

3 gate

38.25

KBC023

4 gate

47.41

Roadwall Safety Traffic Barrier

Can be filled on site with water or sand for extra stability and is designed to stack very efficiently. Manufactured from UV stabilized

polythene. Supplied in red or white. Units measure 1,000mm long, 600mm high and 500mm wide. **Please Note:** Uprights and planks as shown are not included as standard but are available on request.

Code**Colour****Price (£)**

OPO9160W

White

39.75

OPO9160R

Red

39.75

JSP Maxilite - Traffic Management Lamp

360° degrees swivel head, 180mm diameter lens area. Tamper proof zinc plated security bolt. (FNPC) Flashing non Photo Cell. Batteries not included = £1.25 x 2no

Code**Price (£)**

LAA010

7.75

JSP J-Flash Xenon Revolving Signal Light

Runs off 12V cigarette lighter fitting. Strong base magnet with PVC cover for vehicle roof.

Code**Price (£)**

LMP000

27.00

Arrow T50 Heavy Duty Tacker Gun



Choice of home owners and professionals alike. All steel construction. Patented jam proof mechanism. Over 50 years of tested durability. Uses all T50 type staples.

Code	Price (£)
ARRT50	19.95

Arrow Staples to suit T50 Tacker Gun



Supplied in packs of 1250. Can be used with the following: ET50, ETC50, ETF50BN, ETF50PBN, ETFX50, ETN50, HT50, T50, T50OC, T50PBN, T55, T55C.

Code	Size	Price (£)
ARR506	10mm	2.49
ARR508	12mm	3.29
ARR509	14mm	3.59

Gyproc Wallboard Saw - 375mm



Blade Length: 375mm - Tooth Pitch: 5mm

Code	Price (£)
WBS01	16.95

Hardpoint Saw - 375mm



Blade Length: 375mm - Tooth Pitch: 5mm

Code	Price (£)
HPS01	5.75

Everbuild 300mm Hacksaw



Heavy duty with stable action for straight cuts. SoftGrip handle. 24tpi bi-metal universal fit blade which can be adjusted to cut at 45°

Code	Price (£)
EVBHS30	6.99

Gyproc Hammer Head Jointing Knives



Top Quality tool with ground and polished steel blades and hardwood handles with hammerhead feature. The SoftGrip handles feature metallic end caps for knocking back protruding nail heads

Code	Size	Price (£)
15669	100mm	6.73
15308	125mm	7.68
15196	150mm	8.13

Gyproc Plastering Hawk



Premium quality light aluminium alloy with detachable SoftGrip handle and rubber callous guard. 325mm x 325mm

Code	Size	Price (£)
09383	325 x 325mm	11.43

Thistle Stainless Steel Finishing Trowels



The blades are 'gold' treated to prevent staining and are centre ground to produce an extra smooth face. SoftGrip Handle

Code	Size	Price (£)
09378	305 x 125mm	14.91
09379	330 x 125mm	15.13
09380	355 x 125mm	15.52

Everbuild Gauging Trowel



180mm Gauging trowel with a SoftGrip handle and a tempered and hardened carbon steel blade

Code	Price (£)
EVBGT04	2.15

Everbuild Pointing Trowel



150mm Pointing trowel with a SoftGrip handle and a tempered carbon steel blade.

Code	Price (£)
EVBPT04	1.95

Gyproc Heavy Duty Crimping Tool

Punch and lock 2 metal sections of up to 0.7mm. Drop forged

Code	Price (£)
75109	65.50

Gyproc Crimping Tool

Angled head, cantilever action and spring return. Crimp metal sections up to 0.5mm

Code	Price (£)
15294	49.43

Everbuild Hand Sander

Ergonomic Softgrip handle. Takes Tradesman sanding papers (Page31).

Code	Price (£)
EVBP23	6.25

Everbuild Universal Pole Sander

Die cast metal head with universal swivel joint. supplied with alloy shaft. Takes Tradesman sanding papers (Page31).

Code	Price (£)
EVBP24	9.75

Gyproc Mixing Tubs and Buckets

Polyethylene mixing tubs with moulded handles for easier lifting and carrying. Ideal for all types of plaster, jointing compounds and mortars.

SXTGB03: Standard black bucket for use on sites.

Code	Size	Price (£)
SXTGB03	3 gal	0.98
15436	25 Litre	7.90
15438	40 Litre	9.90

Measuring Tapes Metric / Imperial Scale

With self locking blade and brake retraction. The tapes also have magnetic tips for ease of use



Code	Size	Price (£)
SBXTM50	5m	1.95
SBXTM75	7.5m	2.95
SBXTM100	10.0m	4.50

Everbuild Surveyors Tape Measure - 30m

Robust fibreglass tape with easy to clean surface. Heavy duty ABS case. Quick rewind with lock away handle

Code	Price (£)
EVBSTM30	8.10

Everbuild Professional Spirit Levels

Professional quality, high accuracy levels with a heavy ribbed section for extra strength. The 600mm, 1mtr. 1.2mtr and 1.8mtr spirit levels all have welded vials and milled top and bottom faces. The 250mm Scaffolders Spirit Level has strong magnets in a milled base.

Code	Size	Price (£)
EVBSPIRIT250	250mm	5.90
EVBSPIRIT600	600mm	6.38
EVBSPIRIT1000	1m	8.18
EVBSPIRIT1200	1.2m	9.79
EVBSPIRIT1800	1.8m	14.99

Everbuild Combination Pliers

Made from chrome vanadium steel with induction hardened cutting edges and jaws. Softgrip handle

Code	Size	Price (£)
EVBCP07	7"	3.09
EVBCP08	8"	3.89

Everbuild Knives**Pro Knife (EVBPK12):**

Ergonomically designed handle with quick blade release and auto re-loading, contains 5 spare blades.

Standard Knife (EVBSK12): Sturdy zinc alloy construction with simple retractable blade system.

Replacement blades (EVBRB50): Pack of 100 blades

Code	Price (£)
EVBPK12	5.69
EVBSK12	2.79
EVBRB50	7.65

Everbuild Fibreglass Claw Hammer



Mirror polished head claw hammer with ergonomic soft grip handle and durable fibreglass shaft

Code	Size	Price (£)
EVBFC16	16oz	4.40
EVBFC20	20oz	4.75

Everbuild All Steel Claw Hammer



Mirror polished all steel construction claw hammer with built in anti-vibration gel system for cushioned action.

Code	Size	Price (£)
EVBSCH16	16oz	9.35
EVBSCH20	20oz	10.95

Everbuild Lump Hammer



Specially hardened and heat treated to withstand high impact applications. Soft grip handle and tough fibreglass shaft

Code	Size	Price (£)
EVBLH25	2.5lb	4.89
EVBLH40	4lb	5.95

Everbuild Black Rubber Mallet



Tough durable semi hard rubber head. Soft grip handle

Code	Price (£)
EVBRM01	4.35

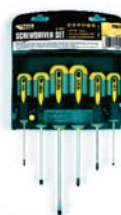
Everbuild Brick Bolster Chisel Set - 3pce



Hardened and tempered high carbon steel blade. Softgrip handle supplied in a heavy duty carrying case. Set comprises 1 x 2" Bolster, 1 x 3" Bolster, 1 x 4" Bolster

Code	Price (£)
EVBBCS03	17.81

Everbuild 6 Piece Screwdriver Set



Comprises of: Pozi Drive - PZ0x75, PZ1x75, PZ2x100. Slotted - 6x100, 6x150, 3x100. Softgrip handles. Chrome vanadium blades with hardened magnetic tips.

Code	Price (£)
EVBSD06	6.50

Everbuild 150mm Speedy Clamp



Sturdy metal one handed clamp with a quick release ratchet, 150mm jaws

Code	Price (£)
EVBSC15	4.05

Dustpan and Brush



Standard size dustpan with hand brush

Code	Price (£)
HAR652	2.89

Site Brooms c/w handles



Quality brooms in various sizes and head types.

Code	Size	Head Type	Price (£)
SXSB300	300mm	Soft	3.25
SXHB300	300mm	Hard	3.75
SXSB450	450mm	Soft	4.55
SXHB450	450mm	Hard	4.95

Everbuild Floor Scrapers



Cuts through plaster and cement droppings, robust, lightweight pole and interchangeable blades. Replacement blades priced in packs of 4 (/REP)

Code	Size	Price (£)
EVBF30	300mm	8.00
EVBF45	450mm	9.50
EVBF30/REP	300mm	3.85
EVBF45/REP	450mm	4.99

Square Mouth Builders Shovel



Square mouth shovel with wooden shaft, metal D-shaped handle and wooden grip.

Code	Price (£)
SBXSS02	9.95

Everbuild Gel Filled Knee Pads



Pair of comfortable gel filled pads with rugged hard caps to protect against rough surfaces. Loop straps offer an extra secure fit and one size fits all

Code	Price (£) / pair
EVBKP06	11.85

Everbuild 5 Pocket Tool Pouch



Tool pouch with 5 large pockets for tools and fixings.

Code	Price (£)
EVBTP05	6.80

Everbuild Drill Holder



Drill holder pouch with four pockets for drill bits

Code	Price (£)
EVBDH01	3.99

Everbuild Hammer Holder



Hammer holder with metal hammer loop fixed with four rivets

Code	Price (£)
EVBBH01	2.99

Gyproc Plasterers Water Brush 125mm

Tolerates prolonged exposure to water. Genuine pig bristles. Handle of close-grained treated hardwood.
Code 15661 Price (£) 7.72

Trend KWJ900 900mm Worktop Jig



Female cut, male cut, connector bolt recess, curved peninsular, 45° end cut, R40mm corner radius, R100 corner radius, 22.5° mitre joint, 35mm circular hinge and 3/4" BSP hole

Code	Price (£)
TRKWJ900	119.00

Trend COMBI66 Worktop Jig



Female cut, male cut, bolt recess and curved peninsular. Accessories available include 12.7mm (1/2") diameter straight cutter, carry case and F-Clamp (2 required).

Code	Description	Price (£)
TRCOMBI666	Jig	79.50
TR17DX1/2TC	Router Cutter	18.00
TRCASE/65	Carry Case	11.75
TRFC/200	F-Clamp	9.25

Trend H/JIG/A Two Piece Hinge Jig



For recessing hinges in wooden doors and frames. Includes 4 x apertures, 2 x bradawls, 16mm guide bush, T-Handle Hex key, 4mm spacing gauge and fabric storage case. Accessories include a long reach cutter and corner chisel for squaring corners on hinge recesses.

Code	Description	Price (£)
TRH/JIG/A	Jig	157.50
TR12X1/4TC	Long Cutter	15.75
TRC/CHISEL	Corner Chisel	8.50

Trend T10ELK 2000W Router - 110V to suit Jigs



Electronic speed control, Soft start, precision base, spindle lock, adjustable side fence, 3 position depth stop, adjustable inner plate. **Includes:** 1/2" collet, 35mm dust spout, 30mm guide bush, side fence, storage case.

Technical Specifications

Plunge stroke	0 - 80mm
Power Input	2000W
Collet Diameter	1/2"
No Load speeds	8 - 20000 rpm
Weight	6.3kg

Code	Price (£)
T10ELK	217.50

Extension Cables



Quality extension cables with plugs and sockets.

Code	Description	Price (£)
EXC1415	14m x 1.5mm 16Amp 110V	7.95
EXC1425	14m x 2.5mm 16Amp 110V	9.99
EXC1415B	14m x 1.5mm 13Amp 240V	10.95
EXC1415	14m x 4.0mm 32Amp 110V	32.80

Arctic Cable Rolls



100m rolls of extension cable available in blue or yellow. Sockets and plugs not included.

Code	Description	Price (£)
ACR153B	1.5mm 3 Core Blue	45.90
ACR153Y	1.5mm 3 Core Yellow	45.90
ACR154Y	1.5mm 4 Core Yellow	59.95
ACR253B	2.5mm 3 Core Blue	68.75
ACR253Y	2.5mm 3 Core Yellow	68.75
ACR403B	4.0mm 3 Core Blue	99.50
ACR403Y	4.0mm 3 Core Yellow	99.50

Spare 110V Plugs and Couplers



Spare 16A plugs (TS16AP) and couplers (TS16AS) for 110V electrical systems



Code	Price (£)
TS16AP	1.75
TS16AS	1.95

4 Way 110V Splitter Boxes



Four Way splitter boxes with 16A sockets. Supplied with a 5m cable and plug. Glass Reinforced Plastic body for added safety. Also available with a metal body (SB416AM)

Code	Price (£)
SB416AG	23.50
SB416AM	17.90

6 Way Splitter Box with MCB



Splitter Box with 6 x 16A sockets. 5m x 4.0mm 110 Volt 32A input lead. 3 x MCB (Minature Circuit Breakers) for added safety and equipment longevity.

Code	Price (£)
6WSPL	57.50

25m Cable Reel with 3 x 13A sockets (240V)



240 Volt 13A cassette cable reel, comes with 3 x 13 Amp sockets.

Code	Price (£)
25240CR	19.90

25m Cable Reel with 2 x 16A sockets (110V)



Cable Reel with 2 x 16A sockets. Metal frame with ergonomic rubber handle. Available with either 1.5mm or 2.5mm 3 core cable

Code	Cable Size	Price (£)
25110CR15	1.5mm	26.90
25110CR25	2.5mm	29.90

Site Transformers



240 Volt to 110 Volt Transformers for use on site. 1.5kVA and 3kVA transformers have 2 x 16A sockets. 5 kVA has 2 x 16A sockets and 1 x 32A socket.

Code	Description	Price (£)
TSTR15	1.5kVA	36.95
TSTR30	3kVA	39.99
TSTR50	5kVA	97.99

10kVA Site Transformers



10 KVA Continuously Rated Single Phase Site Transformer (BS4363). MCB protection on input and output circuits

Code	Description	Price (£)
TS10TR1	Single Phase	299.99
TS10TR3	Three Phase	379.99

Encapsulated Fluorescent Task Light on A Frame

2 foot double encapsulated task light on a sturdy A frame. Non corrosive, contractors task light complete with 5m cable, 110 Volt plug and double 16 Amp socket box.

Supplied with 2 x 2ft task light bulbs

Code	Price (£)
AFTL02	29.95

Double Encapsulated Fluorescent Task Lights

110 Volt task lights available with either a 2 (DEFL02) foot or 5 (DEFL05) foot head. (DEFL05 version is single light). Polycarbonate fluorescent lamps on tripod with 5m cable and plug + double 16 Amp socket box. Supplied with 2 x bulbs.

Code	Price (£)
DEFL02	39.95
DEFL05	49.95

Defender Fluorescent Uplights

2' and 4' Fluorescent Uplights with 5m cable, plug and single 16 amp power takeoff point. Ideal for plastering. Can be used in both 110 Volt and 240 Volt systems. Tough robust construction. Self righting when knocked. Suitable for use both indoors and out.

Code	Price (£)
DFUL02	59.90
DFUL04	69.00

500W Halogen Telepod Site Lights - 110V

110 Volt IP54 Rated Head 2 metre cable complete with 16amp plug. Available in single (TS251) or double (TS253) head. 0.9m to 2m adjustable stand.

Code	Price (£)
TS251	14.75
TS253	19.75

110V Gripper Inspection Lamp

Complete with glass shroud and wire cage. Tough gripper handle for hands free use. Self aligning clamps.

Code	Price (£)
GRP110L	6.97

MINIPOD 500W Enclosed Head Floodlight (110V)

Secured on a carry frame with rubber foam handle. Supplied complete with 3m cable, bulb and 16 Amp plug. Superb Value for Money

Code	Price (£)
SBXMP500	9.95

2D MiniMax 110V Task Light

Portable 110 Volt task light complete with a 28W 2D fluorescent tube. Includes 3m cable and 16 Amp plug

Can be free standing, hooked up or held. Intended for indoor use only

Code	Price (£)
2DMMTL	19.95

ES Festoon Lighting Kits - 110V

Festoon Kits available in 25m or 100m lengths.
25m Kit: 10 lamp holders, 10 guards, 10 bulbs, lead and plug

100m Kit: 33 lamp holders, 33 guards, 33 bulbs, lead and plug

Bulbs are screw fitting.

Code	Price (£)
TSFK025	29.95
TSFK100	97.90

Chargepak 1 - Onsite Portable Charging

This unit connects to a 110 Volt site supply and provides a restricted low output 240 Volt source suitable for charging battery operated power tools and running low power 240 Volt equipment (radios etc.) safely on site. BSI approved and CE marked. BS EN 61558.



Code	Price (£)
CPACK1	69.95

ITW Spit Pulsa 700E Nail Gun for Electrical Contractors



The Pulsa 700E is a lightweight, robust, tool with a multitude of uses but mainly used in the electrical industry for fixing conduit, trunking, steel channel and cabling systems plus much more!! Kit includes Pulsa 700E, high impact lightweight carry case, 2 x battery, battery charger, safety goggles, allen key, dust cover and instruction manual.

Power: Battery and Gas
Nail Size: 15mm - 40mm

Code	Price (£)
010327	449.00

ITW Spit Pulsa 700P Nail Gun for Drywall Contractors



The fastest method of fixing for drywall contractors - a secure and fast solution for fixing to concrete and steel. Applications include fixing drywall track systems, timber, angles, fire protection systems and EML to concrete and structural steel. Kit includes 700P with magazine, high impact lightweight carry case, 2 x battery, battery charger, safety goggles, allen key, dust cover and instruction manual.

Power: Battery and Gas
Nail Size: 15mm - 40mm

Code	Price (£)
010328	449.00

ITW Paslode IM350 Gas Strip Nailer with 2nd battery FOC



Professionals choice for cordless first fix nailing applications. High performance gas technology without the need for compressors. Drives up to a maximum of 2 nails per second and 1,000 per hour.

Power: Battery and Gas
Nail Size: 51mm - 90mm
Magazine: 55 Nails
Weight: 3.1kg

Code	Price (£)
085010	329.00

ITW Paslode IM65 F16 & IM65A F16 Gas Brad Nailers with 2nd battery FOC



Professional 16 Gauge straight brad nailer. Smaller lighter shell with nail lockout, improved depth of drive and easy jam clearance. Suitable for fixing door stops, panelling, architraves, window casing, skirting boards, beading, MDF Fixing. IM65A is angled for working in tight spaces and corners

Code	Price (£)
013321	299.00
013311	299.00

ITW Spitfire P370 Powder Actuated Disc Cartridge Tool with Magazine 2nd battery FOC



Fully Automatic Spitfire P370 suitable for applications such as sheeting, steel mesh, cladding, waterproofing / drainage, metal lathing, general fixing. Supplied with high impact lightweight carrycase, safety goggles, cleaning cloth, cleaning brushes, lubricating oil, push rod, stabiliser and instruction manual.

Power: Powder Disc cartridge
Magazine: 10 Nails
Weight: 2.7kg

Code	Price (£)
011071	265.00

For ITW Consumables please see our **Fixings** section on **Page 20**

ITW Paslode Impulse IM200 / 50 S16 Cordless Gas Stapler with 2nd battery FOC



Used for medium to heavy duty stapling applications. Kit contains IM200 / 50 S16 Stapler, carry case, 2 x batteries, charger, cleaning solution, impulse lubricant, safety glasses to EN166:F and instruction manual.

Power: Battery and fuel cell

Magazine: 150

Weight: 2.94kg

Code

900078

Price (£)

379.00

ITW Paslode Accessories

Code	Description	Price (£)
404717	ITW Paslode Impulse / Spit Pulsa Cleaner - 300ml	3.75
401482	ITW Paslode Impulse Lubricating Oil	6.29
300341	Paslode IM65 Gas Fuel Cell	8.45
300346	Paslode IM350 Gas Fuel Cell	8.45
035460	Paslode / Pulsa Battery Charger Shoe	14.50
900506	Paslode / Pulsa Battery Charger AC/DC Adaptor	18.45
404717	Impulse Battery Cell	22.50
013060	ITW Paslode Impulse Cleaning Kit	23.50

ITW Pulsa Accessories

Code	Description	Price (£)
011771	Fuel Cell for Spit Pulsa 700E / 700P	9.75
334000	Spare Battery for Spit 700E / 700P	58.75
013061	Spit Pulsa Cleaning Kit	23.50
336800	Electrical Nail Guide	29.79
333700	Magnetic Nail Guide	75.00
064320	12mm x 10m All Purpose Steel Band	4.95
011204	12mm Steel Washers for use with 333700 - Box of 100	6.85
565032	Pulsa 700E Grey Conduit E Clip - 20mm - Box of 100	7.46
565033	Pulsa 700E Grey Conduit E Clip - 25mm - Box of 100	8.79
565082	Single Grey P Clips for Conduit and Pipe Work - 20mm - Box of 100	7.46
565084	Single Grey P Clips for Conduit and Pipe Work - 25mm - Box of 100	8.79
011203	Pulsa Clip Elec All Purpose Cable Tie Clips 9mm - Box of 100	6.95
565508	Grey Cable Tie Clip 16 - 32mm - Box of 100	8.29
565915	Single 8 Cable Bow Fixing - Box of 50	16.30
565916	Double 16 Cable Bow Fixing - Box of 25	9.99
011430	M6 - M8 Threaded Rod Hanger for Spit 700E - Box of 100	19.85
011431	M8 - M10 Threaded Rod Hanger for Spit 700E - Box of 100	25.85
921623	Pirelli Prysmian FP Firefix Double Red Cable Clips - 02 Size - Box of 200	129.00
921624	Pirelli Prysmian FP Firefix Double Red Cable Clips - 04 Size - Box of 200	129.00
921622	Pirelli Prysmian FP Firefix Single Red Cable Clips - Box of 500	258.13

We can also provide you with ITW Paslode and Pulsa fuel & nail kits, and other ITW consumables please see our fixings section on Page 19 - 20.

Harris Premier Paint Brushes



A high performance pure and synthetic bristle paint brush for use with all paints and varnishes. Design includes an attractive, ergonomically designed handle for extra comfort.

Code	Head Size	Price (£)
H20204	0.5"	1.79
H20210	1.0"	1.99
H20220	2.0"	2.95
H20230	3.0"	4.89
H20240	4.0"	5.95

Harris 9" Premium Complete Roller Kit



9" Roller set designed to offer performance with value. EasyClean rollers feature microfibre fabric for enhanced paint capacity and an extra smooth finish.

Code	Price (£)
HAR9KIT	5.45

Harris 12" Roller Frame & Medium Pile Sleeve



Harris Delta 12" Double arm frame with a high quality knitted fabric, medium pile sleeve.

Code	Price (£)
HAR9KIT	10.36

Harris 2 Litre Paint Scuttle



Strong rigid plastic paint scuttle suitable for holding 2 litres. A must for any professional decorator

Code	Price (£)
H434	4.89

Harris 12" Plastic Paint Tray



Extra strong professional quality paint tray with unique design that offers improved paint dispersion for even paint loading. Corner ridges to remove residual paint from brushes, and two deep chanel for temporary brush storage

Code	Price (£)
H80999	3.79

Harris Ultima Double Click Extension Poles



Interchangeable zinc plated screw thread tips for easy frame change. Supplied with push on adaptor. Exclusive double-click locking mechanism. Fibre-glass outer, and lightweight aluminum inner tube for durability.

Code	Locking Range	Price (£)
H80042	4' x 8'	14.75
H80043	6' x 12'	17.75

2m Steel Extension Pole - 2 Section

Code	Price (£)
SEP2M	5.99

Tradesman Sanding Papers - 100 x 280mm



High performance sanding pads in packs of 25. For use by hand or universal sanders. Available in 80, 100 and 120 Grit. Please quote grit required when ordering in place of *** in the product code.

Code	Price (£) / 25
TMSP25/**	3.95

Everbuild Professional and DIY Sealants



The Everbuild range of products is one of the most popular among both professionals and DIY'ers alike.

The following best sellers are just a small sample of what is available so if you cannot find what you are looking for, do not hesitate to contact us.

For more product information see www.sitebox.ltd.uk

Code	Description	Price (£)
EPC310	125 One Hour Painters Caulk 310ml	0.95
PG350	Pinkgrip Grab Adhesive Gripfill 350ml	1.89
IN310	Instant Nails Solvent Free Gripfill 310ml	1.25
F310	Fire Mate Intumescent & Acoustic Mastic 310ml	0.99
BS500	500 Bath and Sanitary Silicone 310ml	1.74
BUS450	450 Builders Silicone 310ml	1.67
MM310	Mirror Mate Sealant and Adhesive 310ml	4.65
WM310	Weather Mate Sealant 310ml	3.38
LM310	Lead Mate Sealant 310ml	3.45
GPS310	General Multi-Purpose Silicone 310ml	1.75
AC95900	AC95 Intumescent & Acoustic Mastic 900ml	2.95
FWBS310	Forever White Anti-Mould Bathroom Silicone 310ml	3.25
RGS310	Roof and Gutter Sealant 310ml	1.69
STX310	Stixall Grab Adhesive White 290ml	3.79

Standard Sealant Gun 400ml



Code	Price (£)
SG400	2.97

Jumbo Sealant Gun 1L



Code	Price (£)
JSG1000	14.79

Everbuild Click 'N' Seal Gun



Unique sealant gun with patented method of holding the cartridge. Allows for quick cartridge change and easy rotation for hard to get to places. Holds 310ml and 400ml cartridges as well as 290ml thick wall cartridges.

Code	Price (£)
CNSG001	8.15

Everbuild 501 PVA Bond Glue



Multi purpose bonding agent, primer, sealer, cement and plaster admixture that adheres to most common building and DIY materials. Fully conforms to BS5270

Code	Price (£)
PVA1L	2.95
PVA5L	7.85

Everbuild 502 Weatherproof Wood Adhesive 1L



Quality resin based wood adhesive for all wood bonding. Can be used internally and externally and provides a high strength impact resistant bond. Dries clear, fast cure. Conforms to EN 204 and BS 4071 for creep resistance

Code	Price (£)
WWA1L	4.75

Everbuild Non-Slip Tile Adhesive - 2.5L



Acrylic based formula for extra slip resistance and grab. Designed for general use in bathroom and kitchen areas. Conforms to BS 5980 as a type 2, Class B adhesive and EN12004 type DIT

Code	Price (£)
NSTA1	3.65

ITW Spit Expanding Polyurethane Foam



B2 Fire Rated expanding foam for use with mounting sealing, filling and insulation in building applications. Excellent thermal and acoustic insulation. B2 Fire Rating (DIN 4102), produced according to ISO 9001. 750ml Aerosol.

Code	Price (£)
RAM921731	4.15

White Spirit - 2L

Code	Price (£)
WS2L	3.05

Flex Sanding Discs - 25 Pack



Sanding discs suitable for the Flex Giraffe, Flex Okapi and Fox FDW 450 Sanders. Available in 40, 80, 100 and 120 Grit. Please replace *** with grit required when ordering.

Code	Price (£)
FLXSD/***	57.95

Everbuild All Jobs Hand Cleaner - 1ltr tub



Powerful gelled citrus based handcleaner with polychips. Specially formulated for the building and allied trades to clean wet and semi-cured paints, sealants, silicones, adhesives, grease, oil, petrol and bitumens from hands

Code	Price (£)
AJHC1L	4.75

Everbuild Stick 2 Spray Contact Adhesive



Sprayable glue which bonds to most common materials. Ideal for securing most carpets/floor coverings. Suitable for internal and external use, giving permanent or temporary adhesion. 500ml Aerosol

Code	Price (£)
SCA500	4.50

Everbuild Mitre Fast Bonding Kit



Two part instant adhesive system comprising a cyanoacrylate adhesive and aerosol activator. Suitable for timber plastics and metals including bonding of MDF, rubber, PVCu etc. Standard kit:
1 x 50gm Adhesive
1 x 200ml Activator.

Code	Price (£)
MFBK001	9.99

Surveyline Marking Spray Paint 700ml



Code	Price (£)
SP750/YEL	3.99
SP750/ORA	3.99
SP750/GRN	3.99
SP750/BLK	3.99
SP750/WHT	3.99
SP750/BLU	3.99
SP750/RED	3.99

Everbuild Wonder Wipes - 100 Wipe Trade Tub



Specially formulated to clean hands, tools and surfaces from wet and semi-cured paint, sealant, adhesive, bitumen, expanding foam, oil, grease and even silicone. Particularly useful when there is no water on site.

Code	Price (£)
WW80	5.49

Milwaukee V18PD Cordless Percussion Drill

LokTor Motor - Clip-Lok - FIXTEC - Hammer drill mode - Motorbrake - Softgrip handle - Keyless chuck - Synchromesh 2 speed gearbox - Electronic variable speed - Li-Ion 3.0Ah Batteries - High Torque - 2way flex battery pack insertion.

Includes: 2 x 3.0Ah V18 Li Ion Batteries, charger, side handle, PZ2 driver, bit holder, belt clip and carry case

Code**Price (£)**

4933401361

259.95

Milwaukee V18IW Cordless Impact Wrench

Heavy Duty 1/2" impact wrench - Softgrip handle - Variable speed - 18V Li-Ion 3.0Ah Batteries - High Torque - 2way flex battery pack insertion - Forward/Lock/Reverse

Code**Price (£)**

4933401400

298.91

Milwaukee V18CS Cordless Circular Saw

Li-Ion 3.0Ah Batteries - Softgrip handle - Compact and Lightweight - Excellent visibility of cutting line - Aircraft aluminium shoe - Electronic motor brake - 50° bevel capacity - Spindle Lock

Code**Price (£)**

4933401423

299.99

Milwaukee V18HX Cordless Rotary Hammer Drill

Li-Ion 3.0Ah Batteries - Softgrip handle - Corded tool performance - L-Shape Design - FIXTEC - Variable Speed - Safety Clutch - Reverse Function - Roto-stop - Variolock - Hammer Stop - Depth Gauge - Softgrip side handle. Includes all standard accessories

Code**Price (£)**

4933400382

329.35

Technical Specifications

Battery Voltage / Capacity	18V / 3.0Ah
No Load Speed	0-500 / 0-1600rpm
Drilling Capacity in Steel / Wood / Stone	13 / 38 / 16mm
Max Torque - Soft joint / hard Joint	32 / 71Nm
Keyless Chuck	1.5 - 13mm
Weight	2.6kg
Wood Screws to	12mm
Static Stalling Torque	47 / 19 Nm

Technical Specifications

Battery Voltage / Capacity	18V / 3.0Ah
No Load Speed	0-1400 1/min
Hammer Rate	0-2200 1/min
Torque	325Nm
Tool Reception	1/2 inch
Weight	3.9kg

Includes: 2 x 3.0Ah V18 Li Ion Batteries, charger, hanger bracket and carry case

Technical Specifications

Battery Voltage / Capacity	18V / 3.0Ah
No Load Speed	3200rpm
Cutting Depth at 90° / 45°	0 - 54 / 0 - 39mm
Number of teeth	24
Keyless Chuck	1.5 - 13mm
Weight	4kg
Saw Blade Dimensions	165mm
Arbor Size	15.87mm (5/8")

Includes: 2 x 3.0Ah V18 Li Ion Batteries, charger, 24 tooth blade, rip fence and carry case

Technical Specifications

Battery Voltage / Capacity	18V / 3.0Ah
Drill dia. in Concrete / Stone	24mm
Drill dia. in steel / wood	13 / 28mm
Drill dia. with core cutter	50mm
No load speed	0 - 1200rpm
Tool Reception	SDS+ / Fixtec
Weight	4.2kg
Blow rate (full load)	0 - 4500bpm
Blow Energy	3 J

Milwaukee V28PD Cordless Percussion Drill

Li-Ion 3.0Ah Batteries with power gauge - Softgrip handle - Corded tool performance - Clip-loc - FIXTEC - 20 stage torque adjustment - Hammer drill mode - Reverse Function - 2 speed variable - 2 way flex battery pack.

Includes: 2 x 3.0Ah V28 Li Ion Batteries, charger, cliplok, bit holder, 2 x bits and carry case

Code**Price (£)**

4933390735

319.95

Milwaukee V28SX Cordless Sabre Saw

Li-Ion 3.0Ah Batteries with power gauge - Variable speed trigger - Corded tool performance - Low vibration - Quick shoe adjustment -

FIXTEC - Gear protection system

Code**Price (£)**

4933393078

379.35

Milwaukee PDD12X Cordless Drill

Excellent weight/performance ratio - Softgrip handle - 1/4" hex direct bit reception - Keyless chuck - FIXTEC - 20 stage torque adjustment - Quick-stop motorbrake - Reverse Function - Electronic variable speed - PBS 3000

Includes: 2 x 3.0 Ah Li-Ion Batteries, RCA Charger, Keyless Chuck 1.5 - 13mm, Carrying Case

Code**Price (£)**

4933401468

129.49

Milwaukee LokTor P14.4TxC Cordless Combi Drill

Heavy Duty LokTor Motor - Soft-grip handle - Hammer Drill Mode - All metal Keyless chuck - FIXTEC - Synchromesh 2 speed gearbox - Quickstop motorbrake - Forward/Lock/Reverse - Elec-

tronic variable speed - PBS 3000 - 2 way flex battery pack insertion - Large capacity battery packs

Includes: 2 x 3.0Ah NiMH Batteries, charger, Clip-LOK belt clip, 2 screwdriver bits and carry case

Code**Price (£)**

4933401053

189.94

Technical Specifications

Battery Voltage / Capacity	28V / 3.0Ah
No Load Speed	0 - 600 / 0 - 1800rpm
Hammer Rate	27000bpm
Drill capacity in steel / soft wood / masonry	16 / 65 (self feed bit) / 20mm
Max Torque - soft joint / hard joint	32 / 75 Nm
Weight	3.1kg

Technical Specifications

Battery Voltage / Capacity	28V / 3.0Ah
No Load Speed	0 - 2000 / 0 - 3000 spm
Stroke	29mm
Weight	4.0kg

Includes: 2 x 3.0Ah V28 Li Ion Batteries, charger, 2 X Super Sawzall blades and carry case

Technical Specifications

Battery Voltage / Capacity	12V / 2.0Ah
No Load Speed	0 - 400 / 0 - 1300rpm
Keyless Chuck	1.5 / 13mm
Drill capacity in steel / wood	13 / 34mm
Wood screws to	8 mm
Max Torque - soft joint / hard joint	22 / 50 Nm
Weight	2.2kg

Technical Specifications

Battery Voltage / Capacity	14.4V / 3.0Ah
No Load Speed	0 - 480 / 0 - 1500rpm
Keyless Chuck	1.5 / 13mm
Drill capacity in steel / wood / stone	13 / 36 / 14mm
Wood screws to	10mm
Max Torque - soft joint / hard joint	26 / 59 Nm
Torque Settings	20 + 1
Static stalling torque	35 / 16 Nm
Weight	2.6kg

Milwaukee TKSE 2500 Q Screwdriver 110v

High torque - Lightweight and well balanced - Softgrip - 'Snap-on' depth setting nose - QUIK-LOK cable - Quiet snap-action clutch. **Includes:** 4m cable, 6/8/10mm socket set, belt clip. 240v available to order!

Code**Price (£)**

679055

119.00

Milwaukee T-TEC 201 Percussion Drill 110v

750W motor - Removable main handle - Synchromesh 2 speed gearbox - Metal Keyless chuck - Electronic variable speed - Reversible - Hammer action stop - FIXTEC - QUIK-LOK -

Service hatches for carbon brushes. **Includes:** 4m cable, side handle with depth gauge and carry case

Code**Price (£)**

4933380700

119.00

Milwaukee DD 2-160 XE Diamond Drill 110v

Metal 2 Speed Gearbox - Friction clutch - Softstart - Motor overload protection - High-spindle torque - Soft percussion mechanism - Long AVS handle - FIXTEC system. **Includes:** 4m

cable, long AVS handle, 3 jaw chuck, carry case

Code**Price (£)**

4933368700

258.99

Milwaukee PPH30X2E SDS+ Hammer Drill 110v

Anti vibration system - Electronic softstart - 2 speed switch - variable speed - Speed preselection - Reverse - Roto-stop - Variolock - Hammer stop -

Depth gauge - Softgrip. Inc all standard accessories!

Code**Price (£)**

4933384092

199.00

Milwaukee Kango 900 K Hammer / Breaker 110v

Kango HEX - Inline design - Anti vibration system - Digitronic full wave electronics - Electronic softstart - No load speed limitation - Variable Speed - Speed preselection - Service display - Power display - Metal gearcase -

Spade handle - Straight Handle - Lockon function - Softgrip handle and additional handle. **Includes:** 6m cable, front spade handle, carry case, dust shield.

Technical Specifications

Power Input	725 W
Self-tapping / wood screws	6.5 / 6mm
No Load speed	0 - 2500 rpm
Static stalling torque	25 Nm
Bit reception	1/4"
Working radius	23mm
Weight	1.4kg

Technical Specifications

Power Input	750 W
Drill Dia. in Concrete / Stone	20 / 22mm
Drill Dia. in Steel / Wood	13 / 40mm
Drilling speed (full load)	0 - 750 / 0 - 2200 rpm
No load speed	0 - 1200 / 0 - 3400 rpm
Tool Reception	1.5 - 13mm
Static stalling torque	58 / 30 Nm
Weight	2.7kg

Technical Specifications

Power Input	1500 W
No load speed	0 - 1500 / 0 - 3000 rpm
Drilling speed (full load)	0 - 890 / 0 - 1770 rpm
Impacts	24000 / 48000 bpm
Spindle Dia. and Thread	M 18
Chuck capacity	3 - 16mm
Gear neck dia.	57mm
Weight	4.2kg

Technical Specifications

Power Input	1010 W
Drill dia. concrete / wood / steel	30 / 66 / 20mm
Drill dia. with core cutter	82mm
Full Load speed	0 - 680 / 0 - 2200 rpm
Hammer Rate	4000 bpm
Tool reception	FIXTEC / SDS+
Weight	2.9kg

Technical Specifications

Power Input	1600 W
Single Blow energy	7 - 27 J
Hammer rate under load	975 - 1950 bpm
Tool reception	K-HEX
Weight	11.0 kg

Code**Price (£)**

4933375670

529.99

Milwaukee CS 75 Circular Saw 110v

Powerful motor - 75mm Max cutting depth - Variable mitre angle to 45° - Spindle lock - Additional handle - Suitable for left hand use - Lockable safety switch - Low vibration - Adaptor for sawdust bag or suction hose.

Code**Price (£)**

4933383750

157.00

Milwaukee JSPE 90 X Jigsaw 110v

Slim body grip with Softgrip - FIXTEC base and blade adjustment / change - aluminium base plate - IMB - 4 stage pendulum adjustment - Electronic variable speed with preselection - Strong blower - Integrated dust extraction adaptor. 240 Volt available to order!

Code**Price (£)**

4933383635

99.00

Milwaukee AG 8-115 Angle Grinder 110v - 115mm

Protector motor - Lightweight, slim and compact - Flat metal gear head - Low vibration running - Dust protected bearings and switch - Quick release guard - Spindle lock. **Includes:** cable, handle, guard, spanner.

Code**Price (£)**

4933403215

58.50

Milwaukee AG 23-230 Angle Grinder 110v - 230mm

Powerful motor - Flat metal gear head - Cooling fan - Automatic cut off carbon brushes - Quick release guard - Spindle lock - 3 position additional handle - Adjustable motor casing. **Includes:** Cable, guard, handle, flange nut, spanner. 240 Volt available to order!

Code**Price (£)**

4933383975

78.50

Milwaukee PR3 82 KIT Planer 110v- 82mm

Variable planing - Reversible blade - V-groove - Milled diecast plane base - Balanced plane shaft - Toothed belt drive - Automatic swing guard - Lockable safety switch - Carbon brushes with automatic shutoff - Direct connection for dust extraction. 240 Volt available to order!

Code**Price (£)**

4933383790

135.34

Technical Specifications

Power Input	1400 W
Cutting depth at 90° / 45°	0 - 75 / 0 - 50mm
Saw blade dimension	210 / 30mm
No load speed	5500 rpm
Weight	6.8 kg

Includes: 4m cable, TCT 16 tooth blade, parallel guide, spanner

Technical Specifications

Power Input	710 W
Cutting depth wood / aluminium / steel / ceramics	110 / 30 / 10 / 10mm
Mitre cutting angle to	45°
No load stroke rate	550 - 2700 rpm
Stroke	26mm
Weight	2.3 kg

Includes: 4m cable, 5 saw blades, anti splintering device, sliding shoe and carry case

Technical Specifications

Power Input	750 W
Disc diameter	115 mm
No load speed	10000rpm
Spindle dia. and thread	M 14
Cutting depth	28.4mm
Weight	1.8 kg

Technical Specifications

Power Input	2300 W
Disc diameter	230 mm
No load speed	6600 rpm
Spindle dia. and thread	M 14
Cutting depth	68mm
Weight	5.6 kg

Technical Specifications

Power Input	800 W
Planing Width	82 mm
Rebate Depth	0 - 22mm
Planing Depth	0 - 3mm
Weight	2.5 kg

Includes: 4m cable, Tungsten carbide blades, parallel guide, rebate depth guide, dust bag and spanner

Milwaukee POS 13 Orbital Palm Sander 240v

DUO attachment system for velcro or clamp type papers - Integrated dust extraction - Connection for external dust extractor - Lightweight - Aluminium baseplate - 4m cable

Includes: cable, sandpaper sheets and dust bag

Code**Price (£)**

4933391680

89.99

Milwaukee JSR1218 Job Site Radio

Variable digital tuner - LCD digital clock - 20 AM/FM station presets - 3-Level punch EQ Bass Boost - Operates on mains or PBS battery packs - 14cm weather resistant speakers with separate tweeters - Impact resistant base - Steel speaker grills - Softgrip on handle - Flexible 360° antenna - Cord wrap - 12V power output port - AUX jack - Impact bumpers - Detachable storage bag.

Collomix CX20 Power Mixer

2 speed gearbox. Powerful machine for mixing batches up to 40 litres. Adjustable speed from 400 to 700rpm. Supplied with MK120

negative mixing paddle.

Code**Voltage****Price (£)**

19526

110v

199.00

19522

240v

199.00

Collomix MK Paddles

All paddles are steel with a powder-coated finish and strong welded joints. 3 mixing blades. Suitable for highly viscous materials such as plaster, mortar and screeds. M14 Thread

Negative Paddles (top to bottom mixing action)

Code**Diameter****Price (£)**

19514

120mm

19.75

19515

140mm

21.20

19516

160mm

22.75

Negative Paddles (bottom to top mixing action)

Code**Diameter****Price (£)**

19532

140mm

21.20

19533

160mm

22.85

Collomix has a large range of paddles for various applications, please contact us or go to www.sitebox.ltd.uk for details.

Technical Specifications

Power Input	200 W
No load speed	13000 rpm
Oscillation rate	26000 rpm
Oscillation dia.	2.0mm
Sandpaper sheet size	80 x 133mm
Sandpaper sheet size	80 x 166mm
Holes in baseplate	8
Weight	2.5 kg

Technical Specifications

Volts (AC)	220 - 230 V
Volts (DC)	12 / 14.4 / 18 V
Dimensions (H x W x D)	37 x 49 x 26 cm
Weight (radio only)	7.5 kg

Code**Price (£)**

49240285

109.99

Collomix CX60 Power Mixer

2 speed gearbox. Heavy Duty machine for mixing batches up to 90 litres. Ideal for high viscosity mixing. Supplied with MK160

negative mixing paddle.

Code**Voltage****Price (£)**

19524

110v

289.00

19534

240v

289.00

Fox FDW550 Drywall Sander 110v

Specifications:

Length - 1520mm

Voltage - 110V

No load speed - 650 ~ 1600rpm

Full load speed - 280 ~ 950rpm

Power input - 550W

Disc Dia - 225mm

Weight - 4.6kg

Comes with 4m cable and 4m vacuum hose. Double insulated Class II. CE Certificated.

Fox F50-801 Wet/Dry Vacuum Dust Extractor, also available for use with this tool. For more information please contact us.

Code**Description****Price (£)**

FDW550

Sander

389.00

F50-801

Vacuum

239.00

High Visibility Waist Coat - Full Spec



Two Band Vest certified to EN471, Class2:2. Adjustable velcro fastening. 5cm HiVis-Tex reflective tape.

Fabric: 100% Polyester

Colours: Yellow, Orange

Sizes: S - XXL

Logo printing available please contact us for details

Code

Price (£)

C470

1.95

3 Part Rail Spec High Visibility Waistcoat



Certified to EN471, Class2:2 and GO/RT3279. Quick release shoulder and side seams. 5cm HiVisTex reflective tape.

Fabric: 100% Polyester

Colours: Orange

Sizes: M - XXL

Code

Price (£)

RT20

8.90

High Visibility Overtrousers



Certified to EN471, Class2:2 & EN343, Class 3:1. Fully elasticated waist. 5cm HiVisTex reflective tape

Fabric: 100% Polyester, 300D Oxford Weave, 190g

Colours: Yellow, Orange

Sizes: S - XXL

Code

Price (£)

S480

9.95

High Visibility Bomber Jacket



Certified EN471, Class 3:2 & EN343 Class 3:1 (RT32 to GO/RT3079). Two angled hip pockets with velcro fastening flaps. Drawstring hood. Knitted storm cuffs. Two way zip front with studded storm flap.

Mobile phone pocket, fleece collar.

Colour: Yellow, Orange (RT32)

Sizes: S - XXL

Code

Price (£)

S463

19.95

RT32

19.95

High Visibility Waist Coat with Sleeves



Two Band Vest certified to EN471, Class2:2. Adjustable velcro fastening. 5cm HiVis-Tex reflective tape.

Fabric: 100% Polyester

Colours: Yellow, Orange

Sizes: S - XXL

Logo printing available please contact us for details

Code

Price (£)

C473

7.90

High Visibility Polo Shirts - Full Spec



Certified to EN471, Class2:2 and GO/RT3279 (orange RT22 only). Front placket with buttons. 5cm HiVisTex reflective tape.

Fabric: 100% Polyester, bird eye knit, 175g

Colours: Yellow, Orange

Sizes: M - XXL

Code

Price (£)

S477

8.95

RT22

9.95

High Visibility Fleece



Certified to EN471, Class 3:2. Zip front fastening. Two side zip pockets. 5cm HiVisTex reflective tape. Adjustable hem with spring loaded toggles. Elasticated cuffs and drawcord hem

Fabric: 100% Polyester, Anti-pill finish, 300g

Colours: Yellow, Orange

Sizes: S - XXL

Code

Price (£)

S480

9.95

LOGO PRINTING

Logo Printing service available for most Hi-Vis items. For more information please call us on 01737 783101 or email us. sales@sitebox.ltd.uk

High Visibility Motorway Parka Jacket



Certified EN471, Class 3:2 & EN343, Class 3:1 (RT30 to GO/RT3279). Two hip pockets with velcro fastening flaps. Drawstring hood and hem. knitted storm cuffs. inside pocket, mobile phone pocket. Two way zip front fifth studded storm flap.
Colours: Yellow, Orange (RT30)
Sizes: S - XXL

Code	Price (£)
C473	14.95
RT30	14.95

Standard Safety Goggles



Economy Direct vent goggle. Conforms to EN 166 Grade 1-B.

Code	Price (£)
SBXSSG01	0.75

PW22 Challenger Safety Goggles



Easily adjustable 1" wide buckle with elastic band.

EN166 1F. Ultra light polycarbonate scratch resistant lenses. Soft PVC crystal frame with wide support area. 180 degree distortion free vision with excellent brow protector. Indirect lens to prevent liquid and dust ingress. Suitable to be worn with or without spectacles.

Code	Price (£)
PWPW22	2.25

Comet Anti-Scratch Clear Protective Glasses



Ultra lightweight modern eye protector. Weigh 24g. Frosted polycarbonate frame with Anti-scratch polycarbonate lenses. Approved to EN166 1FT

Code	Price (£)
GMAST01	0.99

Zodiac Sportz Wraparound Safety Glasses



Revolutionary lightweight design, nylon adjustable arm length settings and distinctive anti-scratch wrap around polycarbonate lens offering superb panoramic vision. Approved to EN166 1FT. Clear Lens

Code	Price (£)
GMISE23Z	2.75

Vesta Sportz Wraparound Safety Glasses



Sleek Sports style wrap around design with contoured translucent nylon side arms. Fashionable and lightweight with pre-set arms for a precise fit, first time, every time. Approved to EN166 1FT. Clear Lens

Code	Price (£)
GMISE103	3.25

Solar Sportz Wraparound Safety Glasses



Sporty hi-tech two tone frame, pre-set sports arms and sculpted polycarbonate lenses. Approved to EN166 1FT

Code	Description	Price (£)
GMISE102	Amber	3.50
GMISE103	Clear	3.50
GMISE104	Blue Mirror	3.50

Astral Superior Safety Glasses



Definitive design, high-tech nylon frame with integral browguard. Wrap around anti-scratch, non-mist polycarbonate lens and integral side shields. Unique, fully adjustable lens inclination system and adjustable arm length settings complete with patented comfort tip ends for unequalled wearer comfort and protection. Approved to EN166 1FT.

Code	Price (£)
GMAST01	4.95

Universal Black Spectacle Neck Chord

Code	Price (£)
ASU010	0.95

Apex Browguard and Visor

Protective browguard supplied with polycarbonate visor. Suitable for use with most helmets. Browguard and Visor available separately

Code	Price (£)
APB012-V	11.95

JSP Mark I Safety Helmet

This lightweight helmet combines safety with economy and is designed for basic general use. Conforms to EN 397, ANSI Z89. Available in White (100), yellow (200), and blue (500). Please replace *** with the corresponding colour code.

Code	Price (£)
AHA010-000-***	2.49

JSP Mark II Comfort Plus Safety Helmet

These stylish helmets are tough, functional and offer an extremely comfortable secure fit on the head for prolonged periods of use. Designed for prolonged wearer comfort. Slip ratchet adjustment. Conforms to EN 397, ANSI Z89. Available in White (100), yellow (200), and blue (500). Please replace *** with the colour code.

Code	Price (£)
AHC110-000-***	2.95

JSP Mark VII R3 Safety Helmet

Designed with comfort, performance and style in mind and incorporate the most innovative features seen yet on a safety helmet. Comes fitted with Sureslide® RetractableSpec, is ventilated and with Easyjust® harness adjustment system. Conforms to EN 397, ANSI Z89. Available in White (100), Yellow (200), Green (300), Red (400), and Blue (500). Please replace *** with the corresponding colour code.

Code	Price (£)
AHN120-000-***	8.95

JSP Helmet Accessories

Head torch with fully adjustable harness (AVH000)
Standard Elasticated chinstrap (AH001)

Code	Price (£)
AVH000	9.45
AVH001	1.25

Standard Safety Chukka Boots

Safety Basic (200 joules toe protection EN345-1 S1 and oil resistant out sole). Leather upper. Padded collar. Steel Toecaps and steel midsole
Sizes: 6 - 12
Please replace ** with size

Code	Price (£)
B902/**	13.90

Tan Warm Lined Rigger Boots

Oil and slip resistant in accordance with CEN requirements. Manufactured to EN345-1. Anti-static. Steel toecap and steel midsole. Double Density polyurethane soles. Pierce resistant soles.
Sizes: 5 - 13
Please replace ** with size



Code	Price (£)
B903/**	19.90

Black Safety Trainers

Sizes: 5 - 13
Please replace ** with size

Code	Price (£)
B601/**	14.55

Goodyear Welted Safety Boots

Features steel toecap and steel midsole. Standard EN345-1 SBP. Colour: Black or Brown (B913). Goodyear welted.
Sizes 6 - 11 Available
Please replace ** with size

Code	Price (£)
B912/**	28.75
B913/**	28.75

Cotton Stockinette Gloves



Seamless Construction. One Size Only

Code	Price (£) / pr
8990	0.20

Canadian Rigger Gloves



One Size Only

Code	Price (£) / pr
RG001	0.49

Red PVC KnitWrist Gloves



One Size Only

Code	Price (£) / pr
PVC01	0.45

Red PVC Gauntlet



One Size Only. 35cm length

Code	Price (£) / pr
PVCG01	1.50

PolyFit Nylon PU Coated Gloves

Available in Grey (11) Black (10) & White (08) **Sizes:** M / L / XL

Code	Price (£) / pr
YH011/**	0.97
YH010/**	0.97
YH008/**	0.97

Grey NitrFit Nylon Nitrile Coated Gloves

**Sizes:** M / L / XL
Please replace ** with size

Code	Price (£) / pr
YH009/**	1.47

Latex Crinkle Thermal Grip Gloves

Ideal for outdoor heavy duty tasks.
Available in Medium (M) or Large (L)

Code	Price (£) / pr
A140/M	2.78
A140/L	2.78

DY Flex Seamless Knitted Dyneema Glove

PU Coating. Suitable for component handling, general assembly, electronics. **Sizes:** 9 - 10 (L - XL)
Please replace ** with size

Code	Price (£) / pr
8823/**	6.24

Nylon Polkadot Gloves



Available in Large (YH001/L) or Extra Large (YH001/XL)

Code	Price (£) / pr
YH001/L	0.75
YH001/XL	0.75

Reflex Therm - Crinkle Latex with Fleecy Liner

Good puncture and abrasion resistance. Seamless. Back of the glove is uncoated. Excellent grip in both wet and dry conditions. **Sizes:** 9 - 10
Please replace ** with size required

Code	Price (£) / pr
8632/**	2.99

Orange Criss Cross Gloves

Knitted polycotton yarn with PVC criss cross pattern.
One Size Only.

Code	Price (£) / pr
CC001	0.59

Disposable Gloves - Box of 100



Single use gloves available in either Vinyl (SBXDG01) or Latex (SBXDG02)

Code	Price (£) / 100
SBXDG01	4.25
SBXDG02	4.25

Reflex T Seamless Builders Gloves

Polycotton glove with a latex palm. **Sizes:** 9 - 10
Please replace ** with size

Code	Price (£) / pr
8602/**	0.97

Granite 5 Beta Cut Resistant Glove

Superior quality grain leather glove with elasticated wrist, reinforced thumb and vein protector. Seamless liner.

Sizes: 9 - 10 Please replace ** with size

Code	Price (£) / pr
8912/**	12.95

Tremor-Low Anti-Vibration Gloves

Unique coating to reduce the effects of impact, shocks and vibration. Soft knitted seamless liner for comfort. Allows wearer a great level of dexterity.

Foamed coating provides excellent grip. ENISO 10819 Size 10
TRM = 0.71<1 TRH = 0.57<0.6

Code	Price (£) / pr
8764	8.55

Vibra-Plus Nitrile Anti-Vibration Gloves

Gelfom pad inside the glove reduces vibrational energy by up to 70%. Nitrile coating has excellent resistance to abrasion and tear. Barrier against oil and grease. Brushed cotton liner. Open back. ENISO 10819 Size 10
TRM = 0.88<1 TRH = 0.57<1

Code	Price (£) / pr
NV785/10	13.95

Electricians Gloves

Latex Material gloves with excellent electrical resistance. Anatomical shape for greater comfort. Typical handling applications include Electrical maintenance, Installations, wiring.

Sizes: 10

Code	Class	Max Voltage	Price (£) / pr
SBEG00	00	500	14.56
SBEG0	0	1,000	16.68
SBEG1	1	7,500	25.67
SBEG2	2	17,000	29.92
SBEG3	3	26,500	36.11

If you cannot find what you are looking for, please visit our online store at www.sitebox.ltd.uk for our full range of hand protection.

Touchstone Cut Resistant Glove Range

100% Kevlar knitted gloves providing increased protection against cuts and abrasion whilst maintaining dexterity. Touchstone grip have additional PVC dots. Seamless construction. Sleeves with thumb-slots available for protection of arms. Gloves Sizes: 9, 10. Please replace ** with size required

Code	Description	Price (£) / pr
PG7512/**	Standard Medium	4.50
PG7532/**	Grip	4.75
PG7532F/**	Grip Fingerless	4.95
PG7550	Single Sleeve 14"	2.87

Blade Runner Solo Cut Resistant Glove

Corsucate yarn provides the maximum cut resistance for EN388. Low linting with high levels of comfort

Sizes: 9 - 10 Please replace ** with size

Code	Price (£) / pr
7902/**	7.65

Granite 5 Cut Resistant Yarn Sleeve

Seamless Construction.
One Size

Code	Price (£)
8990/**	4.15

Ear Plugs - Box of 200

Effective ear plug with a contoured shape which anchors the plug in the ear canal. Standard Noise Reduction=32dB. Price shown is for a box of 200 pairs

Code	Price (£)
AEE90	19.20

General Purpose Ear Defenders

Suitable for use where noise levels are a nuisance rather than a hazard, (EN352-1) Standard Noise Reduction=23dB

Code	Price (£)
PW40	2.75

Super Ear Protector Ear Defenders



Pressure seal is designed to give optimum attenuation. SNR 30dB. Foldable, clam shape design prevents external contamination.

Code

PW41

Price (£)

5.90

Standard Moulded Dustmasks - per 50



50 masks. These masks are of simple design and are not classified as respiratory protective devices

Code

SMDM1/50

Price (£)

4.37

JSP Moulded FFP1 Dustmasks - per 20



Dusts, Fumes, Aqueous Mists and Oil based mists

Code

MDMFFP1/20

Price (£)

9.95

JSP Moulded FFP2 Valved Dustmasks - per 20



Fine Dusts, Fibres, Aqueous Mists and Oil based mists

Code

MDMFFP2/20

Price (£)

11.95

JSP Moulded FFP3 Valved Dustmasks - per 5



Very fine Dusts, Fibres, Aqueous Mists and Oil based mists

Code

MDMFFP3/05

Price (£)

19.95

JSP PowerCap Lite IP - 8 Hour Pack



The unit has integral lithium ion batteries - to power an 8-hour unit, with all components built within the headpiece. A consistent flow of cooling filtered clean air streams over the face at 160 Ltr/min. Polycarbonate. Impact Visor to EN1661B. FFP2 equivalent protection. Impact protection to EN166B bump cap protection. Total weight of 440g. Conforms

to EN12941 TH1P.

Spare filters available (CAD601-001)

Code

CAD601

Price (£)

165.00

CAD601-001

6.95

JSP Jetstream Switch and Go Unit



Belt mounted rechargeable respirator with a large capacity disposable dust filter. Belt and power unit weighs 756g and delivers 180lt/min of air.

Pack contains: PSL Filter, hose, charger, carry

case, battery, black nylon headtop, flow meter and UK plug. APF of 20 for very fine dusts, fibres, fumes and aqueous mists.

Code

CBB610

Price (£)

179.95

JSP Jetstream Spare PSL Filter



Code

CBB610/PSL

Price (£)

11.75

Vertex 8145 Rope Lanyard 2m



Used in conjunction with Pioneer DS24. Work positioning lanyard 2 metre with ring type length adjuster and 2 SC karabiner

Code

FA8145

Price (£)

19.50

Vertex 8180 Webbing Lanyard 2m

2m adjustable rope restraint lanyard for use in cherry pickers & boom type elevated platforms. Use with DS24. Conforms to EN 358

Code	Price (£)
FA8180	19.50

Vertex Shock Absorbing Webbing Lanyard

Comes with scaffold hook and SC karabiner. Conforms to EN 355/354/362

Code	Size	Price (£)
FA8106	1.75m	33.50
FA8105	2m	34.75

Pioneer S Full Body Harness

Fully adjustable full body harness with one rear attachment point. Plastic spacer at the back to hold webbing together. Conforms to EN361.

Code	Price (£)
FA8050	25.75

Pioneer DS24 Full Body Harness

Full body harness made out of stretch webbing for added comfort and freedom of movement. Fully adjustable with front and rear attachment. Conforms to EN 361

Code	Price (£)
FA8065	49.50

JSP Harness & Lanyard Kit

Rear attachment harness, 1.75m energy absorbing lanyard with screw gate karabiner & scaffold hook contained in a handy rucksack.

Code	Price (£)
FA9901	42.95

JSP Premium Scaffolders Kit

Front & rear attachment harness, 1.75m energy absorbing lanyard with screw gate karabiner & scaffold hook, linesman helmet & a pair of J-flex gloves contained in a handy rucksack.



Code	Price (£)
FA9930	77.95

JSP Vertex Rescue Equipment

Vertex 8300 Winch (a): The winch has a 5mm galvanised cable and breaking system. Length = 20m. Lifting load capacity = 135kg, Weight = 9kg. Conforms to EN 1496.

Vertex 8305 Tripod (b): Versatile and lightweight tripod suitable for use on uneven surfaces. Max height = 2.15m, Min height = 1.35m, Max footprint = 1.4m, Min footprint = 0.85m, Weight = 13kg EN795

Code	Price (£)
FA8300	375.00
FA8305	350.00

Pioneer Rescue Harness

Multi-purpose harness with front & rear attachment points for fall arrest & rescue. It also has an extra rescue strap attached just above the dorsal plate which enables the user to be lifted vertically through manholes, should they get into difficulty, thus helping to prevent further injury. Used in conjunction with the Tripod + Winch, the rescue harness is ideal for confined space working.

Code	Price (£)
FA8310	39.75

JSP Vertex Fall Arrest Blocks

Galvanised steel cable fall arrest blocks with aluminium snap hook swivel connector and fall indicator. Conforms to EN360. Available in 6m, 10m and 15m lengths

Code	Size	Price (£)
FA8606	6m	220.00
FA8610	10m	235.00
FA8615	15m	250.00

JSP Vertex Attachment Slings

Webbing anchor sling with metal connecting rings. Available in 1m and 2m lengths. For use with arrest blocks. Strength >10kN EN795

Code	Size	Price (£)
FA8710	1m	8.75
FA8720	2m	9.95

BZP Security Chain Various Sizes



Commercial quality security chain available in either 6mm or 8mm. Chain is priced in meter lengths but can be cut to the length required.

Code	Size	Price (£/m)
CHBZP06	6mm	6.25
CHBZP08	8mm	6.97

Quality Brass Cylinder Padlocks



Extruded brass body with hardened and plated steel shackle. Brass cylinder with twin locking shackle offers superior security. Supplied with 3 keys

Code	Body Width	Price (£)
PBC20	20mm	1.98
PBC30	30mm	2.49
PBC40	40mm	3.87
PBC50	50mm	5.56

Brass Cylinder Extra Long Shackle Padlocks



Extruded brass body, extra long hardened and plated steel shackle quality. Brass cylinder with twin locking shackle offers superior security. Supplied with 2 keys

Code	Body Width	Price (£)
PBCL40	40mm	3.80
PBCL50	50mm	4.99
PBCL60	60mm	6.50

Laminated Steel Padlocks



Laminated steel padlock with single locking shackle. Hardened and plated steel shackle construction. Brass Cylinder. Composite Bumper ring. Supplied with 2 keys.

Code	Body Width	Price (£)
PLS30	30mm	1.99
PLS40	40mm	2.69
PLS50	50mm	3.99

Stainless Steel Padlocks



Stainless steel square bodied padlock offering superior security with hardened twin locking shackles. Brass cylinder. Supplied with 3 keys.

Code	Body Width	Price (£)
PSS40	40mm	9.19
PSS50	50mm	11.30
PSS60	60mm	15.88

Stainless Steel Close Shackle Padlocks



Heavy duty stainless steel body with hardened close shackle, offering high security. Brass Cylinder. Supplied with 3 keys.

Code	Body Width	Price (£)
PSS70CS	70mm	12.85
PSS80CS	80mm	15.70
PSS90CS	90mm	18.85

JSP Heavy Duty Padlock and Chain Lock



Heavy duty 1.5m x 10mm link manganese steel chain and 84mm close shackle steel padlock. Supplied in a canvas bag with 3 keys. Ideal for keeping site equipment safe and secure.

Code	Price (£)
HPV010	24.95

Security Key Cabinets



Seamless steel construction with durable coating for corrosion resistance. Fitted with high quality cylinder type lock with 2 keys. Piano hinge with catch plate for added security. Supplied with pack of keytags. Includes mounting screws and wall plugs. Assorted key tags available - per 100 (TSKC100).

Code	Key Capacity	Price (£)
SKC20	20	15.70
SKC45	45	27.50
SKC93	93	38.50
TSKC100	-	19.00

Topcon RL-VH4G GreenBeam® Interior Laser



Compact in design with integrated handle and weighing only 2.6 kg. Autoscan beam control. Built in floor mount. Self-leveling (under 5 seconds). Removable Laser guard. Simultaneous 90° beam for plumb and layout. Manual Slope "rake-in" selector for slopes up to 5°. 4 year warranty. Supplied with wallmount, rechargeable battery and charger, scan in target, RC30 remote and hard case.

Code	Price (£)
TCRLVH-4G	1950.00

Technical Specifications

Accuracy	H:±20" (±2mm / 20m) V:±20"
Detecting Range	Diameter: 60m scanning Diameter: 300m (LS-70G)
Beam Type	532nm Green Laser
Laser Class	Class 3R (JIS, IEC) IIIa (CDRH)
Rotating Speed	10 ~ 300rpm
Water/Dust Proof	IP54 (Cat 2)
Inclination Setting	2 axis manual
Batteries	Rechargeable
Operating Time (battery)	24hrs
External	AC/12vDC (run charge)
Weight	2.6kg (w/o batteries)
Dimensions	182 x 167 x 240mm

Topcon RL-VH3D Interior Laser



Affordable laser with high end features such as SmartScan, horizontal and vertical self leveling, slope matching, HI Alert manual levelling and rotational speed control. Best value rotating laser. 4 year warranty. Supplied with wallmount, rechargeable battery and charger, scan card and hard case.

Code	Price (£)
TCRLVH-3D	699.00

Technical Specifications

Accuracy	H:±20" / V:±20"
Detecting Range	Diameter: 60m scanning Diameter: 300m (sensor)
Beam Type	635nm
Laser Class	Class II
Rotating Speed	0 ~ 300rpm
Water/Dust Proof	IP25
Stop Mode	Yes (manual)
Upper Beam	Yes
Operating Time (battery)	120hrs
Remote Control	No
Weight	2.5kg
Scanning Plus	Yes

Topcon RL-H3C General Construction Laser



An advanced entry level construction laser meeting all jobsite needs, from layout to grade control. One button operation with high speed self leveling. Weather/UV resistant. Heavy duty glass and rugged body holds up to every day bangs and bumps. HI Alert LED to indicate when the unit has been bumped or moved (can be switched off). 4 year warranty. Supplied with tripod, staff, rechargeable battery and charger, and hard case

Code	Price (£)
TCRL-H3C	689.00

Technical Specifications

Accuracy	±15 arc seconds
Detecting Range	150m radius
Beam Type	red
Self Leveling Range	±3°
Rotating Speed	600rpm
Operating Time (battery)	60 hrs approx
Remote Control	No
Weight	1.9kg
Power	4 "C" size alkaline batteries
Dimensions	167 x 182 x 189mm

Self Levelling PLS180 Laserline Tool



Crystal clear laser lines with an output angle of more than 180° free standing in the room. With the PLS180 placed

against a wall full 360° laser covering of a room can be achieved in both the horizontal and vertical planes. Up to 30m visible inside, Minimum range outside 60m (in pulsed mode with optional receiver not included). Includes magnetic mount carry pouch and plastic carry case.

Code

Price (£)

TCPLS180

179.00

Technical Specifications

Accuracy	±3mm @ 10m
Detecting Range	< 30m without detector
Optical Angle	>180
Compensation Range	±6°
Water Protection	IP52
Operating Time (single line)	25 hrs approx
Remote Control	No
Weight	320g
Power	3 "AA" size batteries
Dimensions	85 x 52 x 84mm

Fire Extinguishers



CO2 - Flammable liquids, flammable gasses, electrical and vehicle fires

Powder - Rope, wood, textile, fabric, flammable liquids, flammable gasses, electrical and vehicle fires

Foam - Rope, wood, textile, fabric, flammable liquids.

Water - Rope, wood, textile, fabric.

Code	Type	Size	Price (£)
FECO2	CO2	2Kg	29.95
FECO5	CO2	5Kg	59.95
FEP01	Powder	1Kg	11.75
FEP02	Powder	2kg	12.99
FEP06	Powder	6Kg	29.50
FEF9L	Foam	9 Litre	34.75
FEW9L	Water	9 Litre	32.50

Fire Blankets



Fire Blanket supplied in a plastic, wall mountable case

Code	Size	Price (£)
FB1212	1.2m x 1.2m	17.95
FB1818	1.8m x 1.8m	27.95

Howler Fire Alarm with 'Break Glass'



Break glass operation 118db Siren. 9v Battery included. Dimensions H300mm x W200mm x D120mm.

Code

Price (£)

FB1212

87.95

Rotary Hand Bell



Hand operated Fire Bell, suitable for use on construction sites.

Code

Price (£)

FB1212

47.50

Metal Fire Bucket with Lid



Metal fire bucket with metal lid to suit. Fire retardant red paint for easy identification

Code

Price (£)

FB1212

22.50

For Fire signs please see Page 51, alternatively you can browse the full range of equipment at www.sitebox.ltd.uk

TradeSafe Drywall Cart / Plasterboard Trolley

Board transporter with vertical removable support bar. Carrying capacity - 15 sheets of 12.5mm board (approx). Manufactured from 30mm tubular steel, with two fixed and two swiveling polypropylene castors with rubber tyres giving excellent maneuverability to a limited load. For internal use on level, even surfaces. Available in either Yellow (TSPT/010Y) or Blue (TSPT/010B)

Code	Price (£)
TSPT/010Y	245.00
TSPT/010B	245.00

Platform Trucks

Rigid platform trucks with rubberised deck and fold-flat handle.
CST991: Deck Dimensions(L x W) 738 x 479mm
 Overall Height 815mm
CST992: Deck Dimensions(L x W) 916 x 616mm.
 Overall Height 863mm

Code	Capacity	Price (£)
CST991	150kg	29.15
CST992	300kg	58.50

Sealey Platform Truck with Sides

Heavy duty steel and hinged mesh construction. Drop down sides, for easy loading are also removable, allowing use as a flatbed for oversized items. Internal Dimensions 930 x 480 x 220mm.

Code	Capacity	Price (£)
CST997	200kg	97.50

Sack Trucks

CST987 CST982

Strong tubular steel construction.
CST982: Heavy duty solid tyres.
 Platform Depth: 150mm
 Width: 415mm
CST987: Pneumatic Tyres
 Platform Depth: 255mm
 Width: 545mm

Code	Capacity	Price (£)
CST982	80kg	29.00
CST987	200kg	39.35

Sack Truck 3 in 1 with Pneumatic Tyres

Tubular steel framework with heavy duty pneumatic tyres. Upright, 45° and horizontal positions.
 Height 1275mm
 Width 600mm
 Platform Depth 300/620mm

Code	Capacity	Price (£)
CST989	250kg	69.99

DB2000NY Medium Duty Pallet Truck

Nylon steering wheel, single fork roller. 3 position control lever - Lifting-Neutral-Lowering handle. Turning angle of 190 degrees. Number of pump strokes 12 times, lift height per Stroke 11mm. Weight 55Kgs. Size = 550 x 1150mm

Code	Capacity	Price (£)
DB2000NY	2000kg	169.00

CN3500NY Heavy Duty Pallet Truck

Nylon double roller wheels. Larger piston therefore less force required. 210 degrees steering angle. Pump with fully airtight fluid system. Weight 85Kgs. Size = 550 x 1150mm

Code	Capacity	Price (£)
CN3500NY	3500kg	275.00

BFL1500NY Long Fork Pallet Truck

Nylon double roller wheels. Dual controls. Number of pump strokes -10. Lift height per stroke: 12mm. Over load bypass valve. Bullet connection between steering shaft and pump piston . Weight 85Kgs. Size = 550 x 2000mm

Code	Capacity	Price (£)
BFL1500NY	1500kg	365.00

Hilmor Conduit Benders inc Pipe Vice/Formers



EL25 more commonly known as the shortie and the larger EL32 and are designed to bend steel conduit.

EL25 Capacity: 16, 20 & 25mm steel conduit to BS4568

EL32 Capacity: 16, 20, 25 & 32mm steel conduit to BS4568

Code	Price (£)
------	-----------

SBEL25	355.00
--------	--------

SBEL32	449.00
--------	--------

Spare Hilmor Formers to suit



Formers to suit Hilmor the EL range. HILF32 for EL32 only

Code	Size	Price (£)
------	------	-----------

HILF20	20mm	44.50
--------	------	-------

HILF25	25mm	59.50
--------	------	-------

HILF32	32mm	77.50
--------	------	-------

Spare Hilmor Pipe Vice to suit



Pipe Vice to suit Hilmor EL25, EL32 and ConduBend

Code	Price (£)
------	-----------

HILF16	79.99
--------	-------

Heavy Duty Ratchet Strap



Heavy duty ratchet tensioner, 50mm webbing with claw hook attachments. 4m Length

Code	Price (£)
------	-----------

HRS04	10.75
-------	-------

Lifting Sling



Tested and certified heavy duty webbing lifting sling

WLS03: Length of 3m with a lifting capacity of 2000kg

WLS05: Length of 5m with a lifting capacity of 3000kg

Code	Price (£)
------	-----------

WLS03	14.50
-------	-------

WLS05	29.50
-------	-------

Hydrant Stand Pipes and Keys



Supplied with double check valves as approved by the British Water Council.

HSPSH34: 3/4" single head stand pipe with double check valve

HSPDH34: 3/4" double head stand pipe with double check valve

HK134: Hydrant key 1 3/4" AF

Code	Price (£)
------	-----------

HSPSH34	40.00
---------	-------

HSPDH34	50.00
---------	-------

HK134	9.95
-------	------

Gyproc Footlifter



Simple and useful tool for jacking boards into position.

Leaves hands free for fixing.

Toe stirrup is adjustable

Code	Price (£)
------	-----------

60381	29.95
-------	-------

Double Pad Glass Lifter / Suction Pads



Double pad glass lifter for glazing, flooring and tiling - 70Kg capacity

Code	Price (£)
------	-----------

DGL70	22.77
-------	-------

240 Ltr Wheeled Dustbin / Wastebin



Two wheeled 240ltr dustbin with lid.

Code	Price (£)
------	-----------

WDB240	49.99
--------	-------

Motorola XTR446 Radio Twinpack



Hands free (Vox) operation, 38 interference eliminator codes and 8 channels. Auto channel scan. Radios are supplied as a pair and also include a lightweight and compact headset. Operating frequency PMR446 (Licence-free frequencies)

446.00625 – 446.09375. **Weight:** 174g, **Range:** Up to 8km (5 miles). **Dimensions:** 178 (inc antenna) x 58 x 34mm

Code	Price (£)
------	-----------

60381	79.95
-------	-------

JSP Safe Condition and Fire Equipment Signs



The JSP range of safe condition safety signs give information of safe conditions and escape. The JSP range of fire equipment signs give details of locations, and the correct use of fire equipment. Available in semi-rigid plastic

Code	Description	Price (£)
HBJ271	Fire assembly point 600 x 200mm	4.99
HBJ281	Fire action notice 250 x 200mm	4.99
HBJ291	Fire Extinguisher 200 x 150mm	4.99
HBJ301	Fire Exit (arrow left) 600 x 200mm	4.99
HBJ311	Fire Exit (arrow right) 600 x 200mm	4.99
HBJ331	Fire Exit (arrow up) 600 x 200mm	4.99
HBJ321	Fire Exit (arrow down) 600 x 200mm	4.99
HBJ161	First Aid 600 x 200mm	4.99
HBJ171	Emergency eye wash 300 x 100mm	4.99
HBJ181	Your first aider 200 x 150mm	4.99

JSP Mandatory and Prohibition Signs



The JSP range of mandatory safety signs demand that action is carried out within the workplace. The JSP range of prohibition signs convey prohibited actions. Available in semi-rigid plastic all 600 x 200mm.

Code	Description	Price (£)
HBJ091	Safety helmets and safety footwear must be worn on this site	4.99
HBJ221	High visibility clothing must be worn beyond this point	4.99
HBJ021	Construction site keep out	4.99

PLEASE NOTE: This is only a small sample of the signs that we can supply, if you cannot find what you are looking for please call us or browse our website www.sitebox.ltd.uk. We can also supply road signs along with metal frames to suit.



- 2 - 3mm steel welded construction
- Twin Totem Locks with 4 keyed alike keys
- Hydraulic lid arms to assist with opening of the lid
- Anti-theft features include anti-jemmy bars on the inside and outside of the toolboxes.
- Improved steel construction around the locks for added security.
- Concealed Drop down handles on each end
- Forklift skids on the bottom of the box to assist with transport.**
- Unique skid design allows for easy interchange between skids and castors (optional).**
- All Tradesafe boxes are coded and come with 4 keys

**Does not apply to TS200 and TS250 Boxes

TradeSafe TS200 Small Vanbox



Weight: 37kg
Overall Size: 940 x 460 x 460mm

Code	Price (£)
TS200	104.00

TradeSafe TS250 Large Vanbox



Weight: 47.5kg
Overall Size: 1270 x 460 x 460mm

Code	Price (£)
TS250	155.00

TradeSafe TS6x2x2 Site Box



Weight: 119kg
Overall Size: 1850 x 540 x 560mm

Code	Price (£)
TS6x2x2	399.00

TradeSafe TS4x2x2 Site Box



Weight: 78kg
Overall Size: 1200 x 540 x 560mm

Code	Price (£)
TS4x2x2	195.00



TradeSafe TS4x3x2 Site Box



Weight: 89kg
Overall Size: 1200 x 915 x 560mm

Code	Price (£)
TS4x3x2	295.00



TradeSafe TS4x4x2 Tool Vault



Weight: 182kg
Overall Size: 1200 x 1175 x 560mm

Code	Price (£)
TS4x4x2	395.00



TradeSafe TS5x4x2 Tool Vault



Weight: 195kg
Overall Size: 1435 x 1175 x 560mm

Code	Price (£)
TS5x4x2	495.00



TradeSafe TS4x2x2F FlameBox Site Box

**Weight:** 78kg**Overall Size:** 1200 x 540 x 560mm

Code	Price (£)
TS4x2x2F	289.00



Tradesafe FlameVaults and FlameBoxes come with flame retardant coating and grilled vents. They are constructed from 3mm rolled steel giving added security. All other specifications are the same as a standard box. Supplied with "Highly Flammable" Label

TradeSafe TS4x4x2F FlameVault Tool Vault

**Weight:** 185.5kg**Overall Size:** 1200 x 1175 x 560mm

Supplied with "Highly Flammable" Label

Code	Price (£)
TS4x4x2F	475.00



TradeSafe Castor Kits



Heavy Duty Polyurethane castor set for use with TradeSafe boxes (where applicable). Kit contains 2 x swivel castors and 2 x swivel castors with brake. Dimensions: 5" dia. x 2" width.

Code	Price (£)
TSCK01	65.00

Draper 30 Drawer Storage Cabinet



Steel framed cabinet ideal for use in the workshop with 30 polypropylene drawers. Drilled holes for wall mounting.

Size: 307 x 146 x 375mm
3 different drawer sizes

Code	Price (£)
QC30A	67.95

Quickbuild Demountable Containers



Quick and easy assembly - Ready in 5 minutes. No tools needed. Interlocking system requiring no screwing, drilling etc. Quick Lock fasteners for a secure roof. TUV Tested, GS Mark 3 Tonnes total permissible weight. Lock with profile cylinder. OSB floor covering. Useful accessories available Fork boxes as standard. Double door front face.

PLEASE NOTE: Extra carriage charges may apply to certain delivery zones. Please allow extra delivery time.

Code	Size	Price (£)
SC3000/22	2m x 2m	790.00
SC3000/32	3m x 2m	990.00
SC3000/42	4m x 2m	1190.00

TradeSafe Gas Storage Cages



Providing secure storage for gas bottles with lockable door (padlock not supplied). Available in two sizes. Supplied flat packed. Can be bolted down.

Code	Size (m)	Price (£)
TSGSC12	1.2 x 1.2 x 1.2	279.00
TSGSC18	1.8 x 1.8 x 1.8	395.00

Stanley Guardian Electronic Safe



Specifications:

- Door: 6mm thick
- Body: 3mm thick
- Weight: 14.5 kg
- External Dims: (HxWxD) 250 x 350 x 250mm
- Internal Dims: (HxWxD) 240 x 340 x 200mm

Features a modern electronic security entry system and a unique integral quick fit hold down kit. High security over-ride keys supplied. Fitted with a removable internal shelf

Code	Price (£)
STAN1520	49.95

Insulation Tape

Standard insulation tape 19mm x 33m rolls, available in red (001), black (002), yellow (003), blue (004) and yellow/green (005).
Please replace *** with colour code.

Code**Price (£)**

IN33M/**

0.49

Silver Gaffer Tape

General purpose gaffer tape. 50mm x 50m rolls

Code**Price (£)**

SG50

2.14

Paper Masking Tape

General purpose paper masking tape. 50mm x 50m rolls

Code**Price (£)**

PM50

1.47

Drywall Scrim / Fibre Tape

Scrim Tape, used primarily to cover any unwanted gaps in plasterboard jointing. 50mm x 90m

Code**Price (£)**

FD50

1.97

Paper Jointing Tape

50mm x 150m rolls of paper jointing tape.

Code**Price (£)**

PJT150

2.85

Tickitape Low Tack PVC Tape

A unique thick PVC film coated tape with a special ultra-violet resistant low tack adhesive. 50mm x 100m. Also available in yellow easy tear LTPVC/ET

**Code****Price (£)**

LTPVC

3.35

LTPVC/ET

3.35

Self Adhesive Barrier Tape

A high visibility self adhesive barrier tape. available in either Red & White (011) or Black & Yellow (012)
50mm x 33m

Please Replace *** with colour code

Code**Price (£)**

SABT/**

3.95

Non Adhesive Barrier Tape

Non Adhesive barrier tape available in Red and White (011) or Black and Yellow (012).

Please Replace *** with colour code

Supplied in a boxed roll of 75mm x 500m

Code**Price (£)**

NABT/**

4.56

For other Warning Tapes ('Danger' - 'Wet paint' - 'Asbestos Hazard' - 'Caution Do Not Enter') please visit our website www.sitebox.ltd.uk

We also can provide you with other barrier tapes, such as the Skipper Barrier Tape Unit (Page 22)

3M Brown Packing / Parcel Tape

General purpose parcel tape. Supplied in 50mm x 66m rolls

Code**Price (£)**

3MPT66

1.25

For other packing materials including Bubble Wrap and Shrink / Pallet Wrap, please see Page 56

Flame Retardant PVC Tape 50mm x 33m**Code****Price (£)**

FRPVC33

2.95

Self Adhesive Aluminium Foil Tape



Used when lagging pipes and with its immense stickiness will seal pretty much anything! Available in 50mm x 45m or 100mm x 45m rolls.

Code

Price (£)

SAFT/050

3.45

SAFT/100

4.99

Metal Corner Flex Tape



50mm x 30m Individually boxed tape. 2.61kg per roll.

Code

Price (£)

CFLEX30

6.75

High Density PTFE Tape - Water



Non-flammable thread sealant. Resistant to all acids, alkalis and solvents. Suitable for use with oxygen and potable water. WRC approved. (BS7786:1995 L)

Code

Price (£)

PTFE01

0.58

Hand Held Tape Dispenser



Steel frame tape dispenser with an ABS handle. Suitable for 50mm wide tapes.

Code

Price (£)

HTDP1

7.45

Buffalo Board Protective Sheeting - 50m Roll



Economical impact resistant, 100% recycled, durable and ideal for floors, worktops and other hard surfaces.

Code

Price (£)

150455

24.25

Antimar Fire Retardant Protective Sheeting



Manufactured from polythene sheeting embossed with anti-slip texture. Certified to LPS1207. Supplied in rolls of 2m x 50m.

Code

Weight

Price (£)

AMFR/250L

Light

54.50

AMFR/250M

Medium

68.50

AMFR/250H

Heavy

99.50

Rubble sacks - per 100



Heavy Duty general use rubble sacks. Box of 100

Code

Price (£)

SBXRS100

18.90

Dustsheets



12' x 9' Quality dustsheets available in Polythene (PDS1), Cotton (CDS1) or Cotton Stairway (CSDS1)

Code

Price (£)

PDS1

0.99

CDS1

7.50

CSDS1

6.95

Debris / Safety Netting 2m x 50m



High strength monofilament polyethylene - used on the side of scaffolding to contain falling tools or debris. Available in Green (310) or Blue (320). Cable ties = £3.95 / 100 Please replace *** with colour code

Code

Type

Price (£)

DN250/**

Standard

34.50

DNF250

Fire Retardant

49.50

Blue Woven Tarpaulins



Standard Blue Woven Polyethylene Tarpaulins - eyeletted. Available in 3.5m x 5.5m (BWPT3555) and 7m x 9m (BWPT7090) sheet sizes.

Code

Price (£)

BWPT3555

5.80

BWPT7090

19.50

Scaffold Sheeting / Cladding

High quality reinforced eyeletted Scaffold Sheeting. 2m x 45m. Elasticated Tying Toggles available to suit - 70p

Code

Type

Price (£)

SSR/245

Standard

58.80

SSRF/245

Fire Retardant

98.00

Polythene Protection Sheeting 4m x 25m Roll



Heavy Duty Polythene Protective sheeting (11 kg roll, 500 gauge)

Code

Price (£)

PO3P25

15.50

Damp Proof Membrane 4m x 25m Roll



Heavy Duty DPM Sheeting (300mu, 1200 gauge)

Code

Price (£)

DPM25

33.95

Everbuild Roll & Stroll Floor Protection



Self Adhesive floor protection which is easily removed with no sticky residue. Prevents costly damage to all floor coverings. Flameproof. 'No Trip Risk' safety improvement compared to dustsheets. Anti-slip cross weave. 600mm x 75m

Code

Price (£)

EBRS75

48.25

Door Sleeves



Available in either Lightweight plastic (PSDS20) or Heavy Duty Fire Retardant to LPS1207 (PSDS40)

Code

Price (£)

PSDS20

2.35 ea

PSDS40

4.45 ea

Correx 8' x 4' Protective Sheeting



Quick and simple to cut. Can be easily curved or creased. Lightweight. Tough, durable and impact resistant. Non toxic and resistant to chemicals. Available in standard black (COR/B) or flame retardant clear (COR/FR) to LPS1207. More versatile than traditional materials. Easy to handle or store on site. Can be recycled.

Code

Thickness

Pack Size

Price (£)

COR/B2

2mm

25 sheets

68.75

COR/B3

3mm

25 sheets

112.50

COR/B4

4mm

10 sheets

69.50

COR/FR2

2mm

25 sheets

85.25

COR/FR3

3mm

25 sheets

131.25

COR/FR4

4mm

10 sheets

89.50

Bubble Wrap



Available in large bubble (BWLBO1 - 1.2 x 50m), small bubble (BWSBO1 - 1.2m x 100m) and Fire Retardant small bubble 100m to LPS1207

Code

Type

Price (£)

BWLBO1

Large Bubble

31.90

BWSBO1

Small Bubble

36.50

BWSBF01

Fire Retardant

99.00

Shrink / Pallet Wrap



High performance polythene film used to secure palletised goods. 400m x 300mm x 17mu.

Code

Price (£)

SWPW17

7.90

Storage Equipment

Site Storage Boxes

For details of the following products please see **Pages: 52**

Code	Size (W x D x H)	Price (£/week)
HTS422	1200 x 540 x 560mm	10.00
HTS432	1200 x 915 x 560mm	12.50
HTS442	1200 x 1175 x 560mm	15.00

Access Equipment

BoSS Aluminium Towers

For details of the following products please see **Pages: 6-7**

When ordering please replace ** on the product code with the corresponding length e.g. /18 for a 1.8m long tower and /25 for a 2.5m long tower. All towers are available in both single and double widths which again needs to be specified when ordering.

Code	Platform Height	Price (£/week)
H301218/**	1.2m	17.50
H301718/**	1.7m	22.75
H301523/**	2.2m	29.90
H302523/**	2.7m	34.50
H303523/**	3.2m	40.25
H304523/**	3.7m	43.70
H305523/**	4.2m	46.00
H306523/**	4.7m	49.45
H307523/**	5.2m	51.75
H308523/**	5.7m	55.20
H309523/**	6.2m	57.50
H310523/**	6.7m	60.95
H311523/**	7.2m	63.25
H312523/**	7.7m	66.70
H313523/**	8.2m	69.00

Podium Steps

For details of the following products please see **Pages: 2-8**

Code	Size (Max Platform Height)	Price (£/week)
HPSMK1	1.2m	19.00
HPSMK2	1.55m	28.00
HPSMK3	1.9m	39.00

Aluminium Builders Step Ladders

For details of the following products please see **Pages: 2-8**

Code	Size (Tread)	Price (£/week)
HAPS06T	6	7.00
HAPS08T	8	7.00
HAPS10T	10	10.00
HAPS12T	12	12.50

At Sitebox we understand that some products may only be needed for a one off job and therefore buying outright may seem an expensive way to go. This is why we have a range of products for hire purposes.

Hire products are available to account customers within our catchment area (see below). For an account application form please visit our website **www.sitebox.ltd.uk** and click the 'Credit Accounts' link at the bottom of the page, or call us on **01737 783101**. If you do not wish to set up an account with us, the full cost of the item being hired will be charged, with the appropriate amount refunded once the item is returned to us.

Carriage charges may apply to certain delivery zones. Please contact us for details on this.

Index

A

absorbant granules	15
accoustic mastics	32
adhesives	32,33
air fresheners	15
alarms	48
alpha wedges	19
aluminium blades	12
angle grinders	37
anti-vibration gloves	43
arctic cables	27

B

barrier tapes	22,54
benders	50
bibs	14
biscuits	21
bleach	15
boiler suits	13
bolsters	25
boots	41
boxes	52
braces	14
brackets	17
breakers	36
brooms	25
brushes	25,31
bubble wrap	56
buckets	24
buildex screws	16
bumpers	8

C

cabel reels	27
cabinets	53
cable bow fixings	30
cables	27
cages	53
caulk	32
chains	46
channel nuts	18
channel clips	17
charge packs	28
chemical boxes	53
chisels	25
circular saws	34,37
clamps	25
claw hammers	25
cleaners	15
cloths	15
combi drills	35
cones	22
connectors	17
containers	53
cordless drills	34,35
corner flex tapes	55
correx	56
couplers	27
crimping tools	24
criss cross gloves	42
cut resistant gloves	43
cutting discs	12

D

damp proof membranes	56
debris netting	55
decking screws	17
demountable containers	53
diamond blades	12
diamond drills	36
disc cartridge tools	29
disposable gloves	42
door sleeves	56
drill bits	9
drill holders	26
drills	34,35
drop in anchors	17
drywall carts	49
drywall sanders	38
drywall screws	16
dust masks	44
dust sheets	55
dustpan and brushes	25

E

e clips	30
ear defenders	43,44
ear plugs	43
electricians gloves	43
epomax	21
expanding foams	33
extension poles	31
eye wash kits	15

F

fall arrest blocks	45
fall arrest harnesses	45
festoon kits	28
fibreglass claw hammers	25
fibreglass steps	4
finishing trowels	23
fire alarms	48
fire blankets	48
fire buckets	48
fire extinguishers	48
fire fix clips	30
firemate	32
first aid kits	15
first fix tools	29
fix tools	29
flame boxes	53
flange clips	17
fleeces	13
flood lights	28
floor scrapers	25
flourescant lights	28
foil tapes	55
foot lifters	50
fuel cells	30

G

gaffer tapes	54
gas storage cages	53
gauging trowels	23
glass lifters	50

glasses	40
gloves	42
glues	32
gortex	14
grip fill	32
griddle	19

H

hack saws	23
halogen lights	28
hammer drills	34,36
hammer fixings	16
hammer holders	26
hammers	25
hand bells	48
hand cleaner	33
hand sanders	24
hand saws	23
hand wash	15
hand wipes	33
hard hats	41
hard point saws	23
harness kits	45
hawks	23
helmets	41
hex set screws	18
hexagon nuts	18
hilmor benders	50
hilti compatables	19
hinge jigs	26
hire	57
hi-vis bomber	39
hi-vis fleeces	39
hi-vis jackets	40
hi-vis waistcoats	39
hi-visibility	14,39,40
holdals	14
holesaws	10
hss bits	10
hydrant keys	50
hydrants	50

impact wrenches	34
inspection lamps	28
instant nails	32
insulation tapes	54
itw consumables	19,20

J

jackets	13,40
j-cloths	15
jigs	26
jigsaw blades	11
jigsaws	37
jointing knives	23

K

kango	36
key cabinets	46
knee pads	26
knives	24

L		pvc gloves	42	silicons	32
ladders	4	pvc tapes	54	site boxes	52
lamps	22	Q		site lights	28
lanyards	44,45	quick build containers	53	site vaults	52
lasers	47,48	R		skipper	22
levels	24	radios	38	spill kits	15
lifting slings	50	ratchet straps	50	spirit levels	24
line marking paint	33	rebar cutters	10	spit consumables	19,20
locks	46	recip blades	11	spit tools	29
lump hammers	25	recip saws	35	splitter boxes	27
M		rescue equipment	45	spray paint	33
machine screws	18	resin anchors	21	square washers	18
mallets	25	respiratory protectors	44	stabilisers	8
masking tapes	54	rigger gloves	42	stand pipes	50
masks	44	road cones	22	steel bands	30
mastics	32	road lamps	22	steps	4
measuring tapes	24	roller frames	31	stilts	8
metal nailins	17	roller kits	31	storage boxes	52
mixers	38	roller sleeves	31	storage cabinets	53
mixing paddles	38	rollers	31	T	
mixing tubs	24	roof clamps	8	tacker guns	23
O		roofing bolts	18	tank cutters	10
over trousers	39	routers	26	tape dispensers	55
overshoes	14	rubber mallets	25	tapes	24,54,55
P		rubble sacks	55	tarpaulins	56
p clips	30	ruck sacks	14	task lights	28
packing tapes	54	S		tct blades	11
padlocks	46	sabre saws	35	telesteps	8
paint brushes	31	sack trucks	49	threaded rods	19
paint trays	31	safes	53	threaded studs	21
pallet trucks	49	safety barriers	22	tickitapes	54
pallet wrap	56	safety glasses	40	timberfix screws	17
palm sanders	38	safety goggles	40	toilet rolls	15
paper tapes	54	safety helmets	41	tool boxes	52
paslode accessories	30	safety lamps	22	tool pouches	26
paslode consumables	20	safety masks	44	tool vaults	52
penny washers	18	safety shoes	41	tool vests	13
percussion drills	34,35,36	sanders	38	towers	6,7
pilot bits	10	sanding discs	33	traffic barriers	22
pink grip	32	sanding papers	31	transformers	27
pipe benders	50	saws	23	travel bags	14
planers	37	scaffold sheeting	56	trolleys	49
plasterboard anchors	17	scafftags	7	trousers	13,14,39
plasterboard trolleys	49	scissor lifts	8	trowels	23
plasterer lights	28	screwdriver bits	10	trucks	49
platform trucks	49	screwdrivers	25,36	t-shirts	14
pliers	24	scrim tapes	54	V	
plugs	27	scuttles	31	van boxes	52
podiums	5	sds bits	9	vaults	52
pointing trowels	23	sealant guns	32	W	
pole sanders	24	sealants	32	waistcoats	39
polo shirts	14	second fix tools	29	wall board saws	23
polythene sheeting	56	security boxes	52	wall plugs	16
pop ups	4	security safes	53	washers	18,30
protective sheeting	44	sheeting	55	washing up liquid	15
protective sleeves	43	shims	21	water brushes	26
ptfe tapes	55	shoes	41	wedge nuts	18
pulsa accessories	30	shorts	13	wheel dustbins	50
pulsa cleaning kits	30	shovels	26	white spirit	33
pulsa consumables	20	shrink wrap	56	wood bits	10
pulsa tools	29	signal lights	22	work gates	22
pvas	32	signs	51	worktop jigs	26



CREDIT ACCOUNT APPLICATION

Full Business Name: _____

Registered Office Address (or Home Address for Partnership / Sole Trader)

_____ Postcode: _____

Invoice Address (if different from above)

_____ Postcode: _____

Tel No: _____ Fax No: _____

Buyers Email _____

Company Reg No: _____ VAT Reg No: _____

Business Activity _____ Date Established: D D M M Y Y

Name of Main Contact: _____ Credit Requested: _____

Trade Reference 1

Name: _____

Address: _____

Tel No: _____

Fax No: _____

Trade Reference 2

Name: _____

Address: _____

Tel No: _____

Fax No: _____

Have you ever previously traded under any other name? (If yes, please give details)

Declaration: I / we declare that the details on this form are complete and accurate and undertake to notify Sitebox Ltd of any changes. I / we consent to Sitebox Ltd making any enquiries deemed necessary in connection with this application and that any credit facilities granted shall be at the sole discretion of Sitebox Ltd as to their nature, discretion and extent.

I confirm that I have read the terms and conditions and agree that they will apply to transactions relating to the purchase of goods and services from Sitebox Ltd

Authorised Signatory _____ Position: _____

Full Name _____

Date: D D M M Y Y

Office Use Only: Approved: _____ Date: D D M M Y Y

****To be completed and sent/faxed for the attention of credit control****

****Please enclose a sample of your headed paper****

BANKERS REFERENCE

This part of the form must be completed and signed for reference purposes. Without the completion of this section, a credit account cannot be opened.

I / We:

Consent to

providing a reference on me / us at the request of SITEBOX LIMITED.

Signed

Date

For and on behalf of

Our Bankers address is as follows:

PostCode:

Account No Sort Code:

Terms and Conditions

All orders are accepted with the full understanding of the following terms and conditions which shall apply to all sales / hire of goods by Sitebox Ltd without exception. Any previous terms and conditions set out by Sitebox Ltd have now been surpassed by what is set out in these terms and conditions:

These terms and conditions are those referred to on any Sitebox Ltd quotation, invoice or other Sitebox literature and command the supply of goods sold by Sitebox Ltd (Reg in England 605 9878). The following Reservation of Titles shall apply throughout these terms and conditions:

"We", "Us" and "Our" refer to Sitebox Ltd.

"You", "Your" and "The Buyer" may refer to any customer of Sitebox Ltd.

"The Goods" means the goods supplied by Sitebox Ltd to the customer.

"Delivery" and "Carriage" means the delivery of the goods supplied by Sitebox Ltd to the address and authorised contact name / number given by the customer when placing the order.

"Payment" and "Full Payment" means the total amount on the invoice receipt including any VAT, delivery or any extra surcharges.

All prices quoted on our website are inclusive of VAT which shall be due at the rate ruling on the date of the invoice. The total amount of VAT within the order will be displayed on the invoice receipt which will either be emailed or posted depending on how the order is placed. VAT Reg 906 5645 15 Pricing of goods will be those displayed on our website at the time of when the order is placed through our website or telephoned through in direct relation to our website. We have endeavoured to ensure that any prices given in our pricing catalogues or displayed on our website are fully up to date. However, we reserve the right to alter any information or prices at any time without prior notice.

Credit accounts are due nett monthly. This is unless other payment terms have been formally agreed in writing. We may ask for trade, bank or personal references if required when setting up a credit account for you. We reserve the right to suspend credit facilities should payments not be made within the agreed credit period. If non-payment of monies owed by you extends into a second month, you will be liable for legal recovery costs of the monies owed plus interest (which will rule at 5% monthly of the total monies owed outside the agreed credit terms). Sitebox Ltd will not pass ownership of goods until payment has been received in full by our bankers. For non-credit account payments, we must receive full payment for the order before the order is despatched.

In the unlikely event of non-delivery whereby you have not received all of your goods ordered with us within 7 working days, please notify us immediately.

Any damaged goods or shortages must be notified with our driver / carrier before the delivery note is signed and notice given to us in writing within 48 hours of receiving the goods. Please take your time to ensure all deliveries received are complete and undamaged as Sitebox Ltd cannot accept responsibility for shortages or damaged goods once the delivery ticket has been signed. We cannot refund on shortages in boxed or packed products as these come into us directly from the manufacturer and are directly sent out in the same state.

Any cancellation or return of goods can only be effected with prior written consent by us. Whereby such consent is given by us it is only on the proviso that goods are returned packaged as new. If goods reach you in an unusable condition, we will arrange to have them collected. Once deemed unusable on return to us, we will reimburse you immediately. We reserve the right to levy a 10% charge of the total invoice amount plus all carriage costs if orders are executed correctly (to the customers specification on the order) but subsequently returned.

The buyer shall be responsible for ensuring the accuracy of the terms of any order placed with us.

Whilst we work hard to ensure availability of stock is consistently high, should we have insufficient stock to complete your order we will always attempt to deliver another substitute product of an equal standard. This will not apply however for all products e.g. powertools, access, storage or other larger items.

Should any item contracted out on hire by Sitebox Ltd be lost or damaged upon return, the customer concerned will be liable for the cost to repair or replace. The customer will not be liable however for the costs to service and PAT test hire tools. Hire charges will apply from the on-hire date (as on the delivery ticket) - to the off-hire date (as on the off hire notice). Minimum weekly hire rates apply for the first weeks hire on all items. Hire rates are then calculated on a daily basis thereafter. Carriage is free of charge for deliveries within our catchment area. Delivery charges will apply however to those outside of our catchment area or for especially bulky items delivered.

The customer shall be fully responsible for any item they have hired out with Sitebox Ltd until an off-hire notice for that item has been signed by the customer. The customer shall be responsible for contacting Sitebox Ltd to terminate the hire for any items on hire with us. This can be done by either returning the item/s back to us or by calling us to off hire and arrange collection (customers will be given an off-hire number by us when notifying us of off-hires and arranging collection of item/s). Sitebox Ltd does not offer hire contracts with a fixed duration and therefore can only accept off hire dates or off hire arrangements made by the customer once the customer has been in receipt of the hired item/s for at least 24 hours. It is the customers responsibility to off hire and arrange return or collection. Sitebox Ltd will not tolerate any item/s being left on site without contacting us to arrange off hire and collection first - in this instance hire charges will apply until the item/s have been collected.

Sitebox Ltd shall not be liable for damage to goods / property or injury to persons resulting from negligent or improper use of products sold or hired by us. Hire tools are regularly PAT tested whilst PASMA courses are available through Sitebox Ltd to ensure the safe erection, use and dismantling of mobile alloy towers.

In the event of termination any monies owed to us will become due with immediate effect.

In general if any of these terms and conditions are deemed to be invalid or inappropriate, their use and enforceability will not be affected in any way.

There will be no liability to the customer for any loss of profits or contracts of any kind by Sitebox Ltd however caused.

Whilst Sitebox Ltd. employs the latest in Secure Sockets Layer (SSL) technology software for its transactions with our customers, Sitebox Ltd. will not be responsible for any damages, consequential losses (whether direct or indirect) suffered by a customer whose credit card is fraudulently used or is used in an unauthorised manner.

It is company policy to purchase from quality assured companies. However, should any products be purchased which do not carry formal accreditation, we assess through our own quality assessment procedures. Data sheets for products can be requested at the time of ordering. Please note warranty lengths and conditions differ for each item and this information is also available on request

Sitebox Ltd

Unit 19 Ormside Way
Holmethorpe Industrial Estate
Redhill
Surrey
RH1 2QA

Tel: 01737 783 101
Fax: 01737 783 102

sales@sitebox.ltd.uk

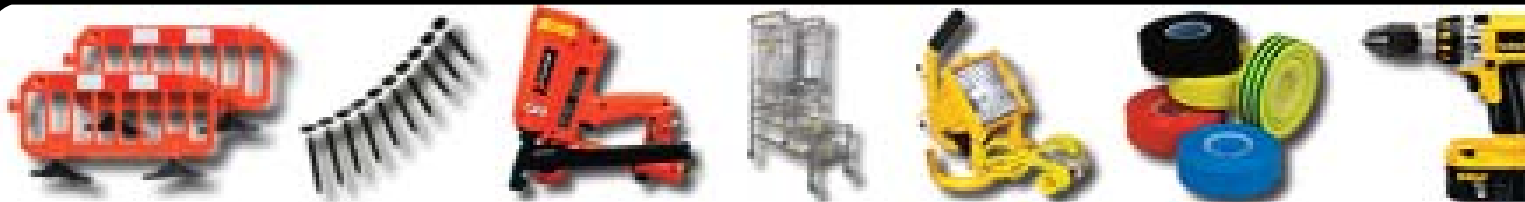
08 / 80

For the full range of fixings, tools, site equipment and much more, plus our current promotions, please visit

www.sitebox.ltd.uk

Prices, images and descriptions are correct at the time of publication, and are subject to change without notice

www.sitebox.ltd.uk



DELIVERING SITE SUPPLIES NATIONWIDE