

Log Jaws

SJA 460

▼ Selling Points

- Strong jaws for working on logs & poles up to approx 300mm / 12" diameter
- Ideal for chainsawing, drilling, fastening or carving work
- Serrated teeth prevent slippage or rolling
- Formed from steel plate, zinc-plated for corrosion resistance

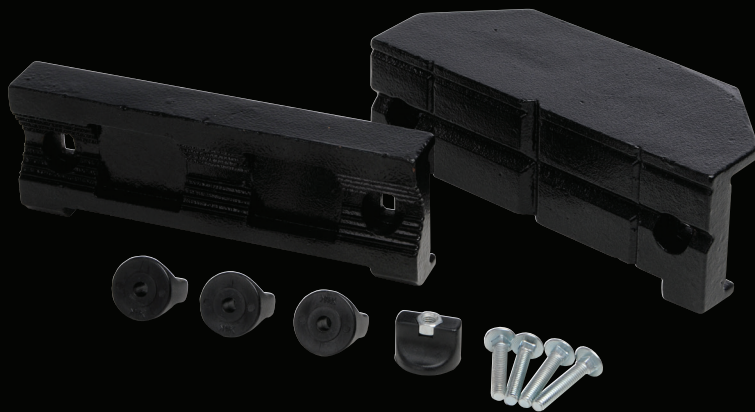


Engineers Jaws

SJA 470

▼ Selling Points

- Tough cast iron jaws & anvil face for heavy duty metal work and welding
- Shaped for increased grip on metal bars, tubes & piping
- Easy to fit & remove
- 50mm / 2" capacity



Tool Tray

SJA 420

▼ Selling Points

- Provides extra support for large workpieces
- Keeps tools, spare parts or other items conveniently to hand
- Robust & hardwearing
- Easy to fit & remove

