

AH119

Timber Connector (GL5)

Technical Datasheet

Application

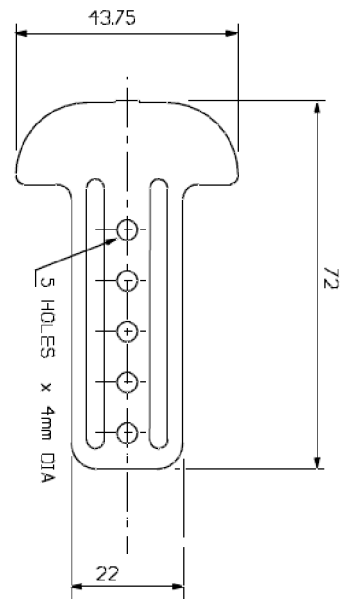
Channel to Timber Connector—maximum drop 35mm



Technical Details

Material Galvanised Mild Steel to BS EN 101 42:2000

Thickness 0.8mm



All dimensions in mm

Health & Safety

As with all metal products, there is a risk from sharp corners or edges. Appropriate PPE should be used. Repeated contact with metal coatings may cause skin irritation.

Arthur Hough & Sons Limited
Hilton Cross Business Park, Cannock Road
Featherstone, Wolverhampton WV10 7QZ
Tel: 01902 867717 Fax: 01902 867719
Email: sales@ahough.com Website: www.ahough.com