

Floor saw

FS 40 E



ZN der Bedienungsanleitung: 5009009-01
Erstellt am: 03 / 2019
Erstellt von: Konstruktion
Datei: K:\KDV\5009xxx\5009009-Bedienungsanleitung-FS40E\
5009009-01_FS40E_03-19_GB.doc

GÖLZ® GmbH
Dommersbach 51
D-53940 Hellenthal
Telefon: +49 (0) 2482 12 200 / Telefax: +49 (0) 2482 12 222
E-Mail: info@goelz.de / Internet: www.goelz.de

All rights reserved according to DIN ISO 16016.

No part of this document (instruction manual and spare parts list) may be reproduced, adapted, transmitted, transcribed, stored on a data medium or be translated into another language without prior written approval of

GÖLZ® GmbH
Dommersbach 51
D-53940 Hellenthal

Guarantee

We reserve the right to amend any information included in this document (manual instruction and spare parts list) at any time and without prior notice.

GÖLZ® assumes no warranty for these documents.

GÖLZ® shall not be liable for errors in this document (manual instruction and spare parts list) or for any collateral or consequential damage in connection with shipment, performance or use of the material.

EU Declaration of Conformity**GÖLZ® GmbH**Dommersbach 51
D-53940 Hellenthal
Deutschland

declares under its sole responsibility that

Type: Floor Cutter
Brand name: GÖLZ
Type: FS40E

Complies the relevant provisions of the Directives

2006/42/EG

Machinery Directive

2014/30/EU

Electromagnetic compatibility

2005/88/EG

Noise emission

and has been developed and manufactured in accordance with the versions of the following standards valid at the date of production:

DIN EN ISO 12100:2011-03	Safety of machinery - General requirements Design principles
DIN EN ISO 13766-2:2018-12	Earth-moving and construction machinery - Electro-magnetic compatibility of machines with internal electrical systems - Part 2: Additional EMC requirements for functional safety
DIN EN 61000-3-2:2015-03; VDE 0838-2:2015-03	Electromagnetic compatibility (EMC)
DIN EN ISO 4413:2011-04	Fluid power - General rules and safety requirements for hydraulic systems and their components
DIN EN 60204-1; VDE 0113-1:2007-06	Safety of machinery - Electrical equipment Equipment of machines
DIN EN 13862:2010-03	Floor cutting machines - Safety

Storage of the technical documentation:

GÖLZ® GmbH

Development & Construction

The year of manufacture and the machine number are indicated on the device.

Hellenthal, 18.03.19
GÖLZ® GmbHGeschäftsführer
Bernd Schmitz

Contents

Preface 6

Warning signs and symbols..... 6

1. Basic safety instructions..... 7

 1.1 Basic operation and designated use of the machine 7

 1.2 Organizational measures 7

 1.3 Selection and qualification of person 8

 1.4 Normal operation of the machine..... 8

 1.5 Special work related to the maintenance and repair of the machine 9

 1.6 Information about special risks electrical energy 10

 1.7 Gas, dust, steam, smoke..... 10

 1.8 Hydraulic 10

 1.9 Noise..... 11

 1.10 Oils, greases and other chemical substances..... 11

 1.11 Changing the location of the machine 11

2. Description 12

 2.1 Main parts 12

 2.2 Safety devices..... 12

 2.3 Technical data..... 13

3. Transport 14

 3.1 Preparation 14

 3.2 Transporting..... 14

 3.3 Store 15

4. Operation 15

 4.1 Mounting the blade..... 16

 4.2 Water supply 17

 4.3 Cutting operation..... 18

5. Maintenance 19

 5.1 General 19

 5.2 V-belts changing 20

 5.3 Lubrication chart..... 20

6. Troubleshooting..... 21

7. Spare parts list 22

 7.1 Using the spare parts list..... 22

 7.1.1 Safety regulation 22

 7.1.2 Ordering information 22

7.1.3	Distribution agencies.....	23
7.2	Wearing parts.....	24
8.	Exploded view and spare parts list	25
8.1	Undercarriage	25
8.2	Electric drive	29
8.3	Control panel.....	31
8.5	Blade guard.....	43
8.6	Pointer unit.....	45
8.7	Rear panel	46
8.8	Protection frame.....	47
8.9	V-belt tensioning device	49
9.	Wiring diagram.....	52

Preface

Thanks for choosing a **GÖLZ®**-product. This operating instruction is designed to familiarize the user with the machine and its designated use.

The operating instruction contains important information on how to operate the machine safely, properly and most efficiently. Observing these instructions helps to avoid danger, to reduce repair costs and downtimes and to increase the reliability and life of the machine. The operating instruction is to be supplemented by the respective national rules and regulations for accident prevention and environmental protection. The operating instruction must always be available wherever the machine is in use. This operating instruction must be read and applied by any person in charge of work with or on the machine, such as:

- Operation including setting up, troubleshooting in the course of work, evacuation care and disposal of fuels and consumables.
- Maintenance (servicing, inspection, repair) and/or
- Transport

In addition to the operating instructions and to the mandatory rules and regulations for accident prevention and environment protection of the country and place of use of the machine, the generally recognized technical rules for safe and proper working conditions and procedures must also be observed.

In this manual all the information required for the intended use of the unit is included. If though you have any specific questions, please refer to your representative, to one of our sales representatives or directly to us:

GÖLZ® GmbH

Dommersbach 51, D-53940 Hellenthal
 Telefon: +49 (0) 2482 12 200 / Telefax: +49 (0) 2482 12 222
 E-Mail: info@goelz.de / Internet: www.goelz.de

Warning signs and symbols



Wear safety glasses!



Wear ear muffs!



Wear hard hat!



Wear dust protection!



Wear safety boots!



Read owner's manual before first initiation!



Wear protective gloves!



Wear safety clothes!



Never touch!



Important advice!



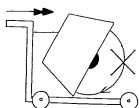
General danger!



Danger exists to cut oneself!





Electrical Hazard!



It is not allowed to move the machine with rotating blade outside of the area in which cutting works have to be performed!

1. Basic safety instructions

In this manual the following terms and symbols are used for particular important information:

	<p><i>Note / Important: Contains important information which stands out from the other text!</i></p>
	<p><i>Attention: Contains instructions which must be strictly observed to prevent damage from the unit and the operator!</i></p>

Important text passages are highlighted in italics or bold or can be found in a grey highlighted text field.

1.1 Basic operation and designated use of the machine

The machine has been built in accordance with state-of-the-art standards and the recognized safety rules. Nevertheless, its use may constitute a risk to life and limb of the user or of third parties, or cause damage to the machine and to other material property.

The machine must only be used in technically perfect condition in accordance with its designated use and the instructions set out in the operating manual, and only by safety-conscious persons who are fully aware of the risks involved in operating the machine. Any functional disorders, especially those affecting the safety of the machine, should therefore be rectified immediately. Separation building implements are exclusively designed for sawing of abrasive building material at building sites using tools in accordance with the manufacturer's instruction.

Using the machine for purposes other than those mentioned above (such as for) is considered contrary to its designated use. The manufacturer cannot be held liable for any damage resulting from such use. The risk of such misuse lies entirely with the user. Operating the machine within the limits of its designated use also involves observing the instructions set out in the operating manual and complying with the inspection and maintenance directives.

1.2 Organizational measures

This operating manual must always be at hand at the place of use of the product and must be accessible to the person operating the machine!

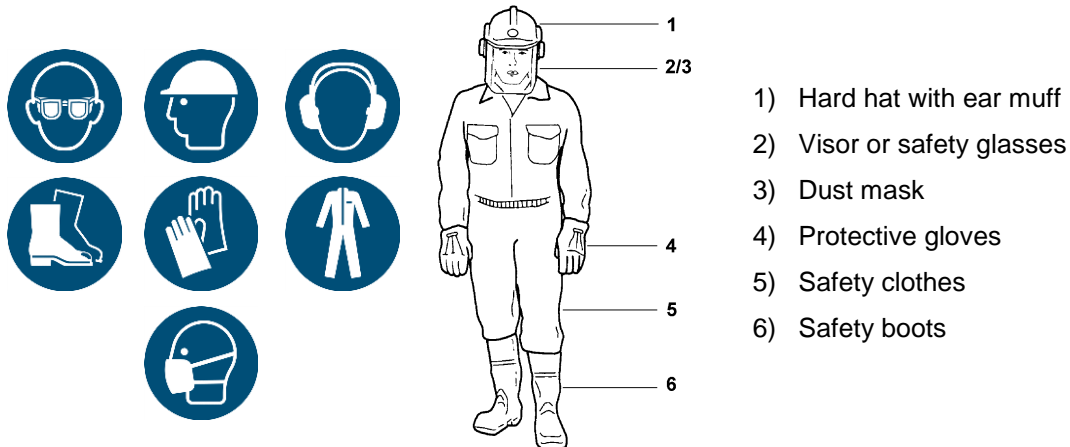
In addition to this operating manual, all other generally applicable legal and other mandatory regulations relevant to accident prevention and environmental protection must be observed! Such obligations may also comprise the handling of hazardous materials, provisioning and/ or wearing of personal protective equipment, or road traffic regulations. This operating manual must be supplemented by instructions covering the duties involved in supervising and notifying special organizational features, such as job organization, work flows or the person entrusted with the work.

Person entrusted with work on the product must have read the operating manual prior to taking up work. This applies especially to persons working only occasionally on the product, e.g. during set-up or maintenance activities. Check - at least from time to time - whether the personnel is carrying out the work in compliance with the operating manual and paying attention to risks and safety-relevant factors.

For reasons of safety, long hair must be tied back or otherwise secured, garments must be closefitting and no jewellery - including rings - may be worn. Severe injury may result from being caught by moving parts of the machine. Personal protective equipment must be used wherever required by the circumstances or by law (e.g. safety glasses, ear protectors, safety boots, suitable safety clothing).

Observe the regulations for prevention of accidents! Observe all safety precautions and warnings attached to the product and always keep them in good and perfectly legible condition.

The personal protection equipment should consist of the following parts:



In case event of safety-relevant modifications or changes in the behaviour of the product, stop the product immediately and report the malfunction to the competent authority/ person.

Do not remove or make inoperative any safety devices the product is equipped with. Never make any modifications, additions or conversions which might affect safety without the manufacturer's / distributor's prior approval! This also applies to the installation and adjustment of safety devices as well as to welding and drilling work on supporting structures.

Damaged or worn parts of the product must be replaced immediately. Use genuine spare parts only.

All spare parts and tools must comply with the technical requirements specified by the manufacturer/ distributor. Adhere to the legally prescribed preventive maintenance and inspection intervals or those specified in this operating manual!

Hydraulic hose pipes must be replaced at prescribed and/ or appropriate intervals even if no safetyrelevant defects have been detected. All maintenance and repair activities must be performed by qualified personnel using suitable tools and other suitable workshop equipment.

Observe the fire alarm and firefighting measures. The personnel must be made familiar with the location and handling of fire extinguishers!

1.3 Selection and qualification of person

Any work on and with the product must be executed by reliable person only. Statutory minimum age limits must be observed!

The product must be operated or serviced by trained or properly instructed person only. Clearly define the individual responsibilities of the person for operation, set-up, maintenance and repair.

Make sure that only authorized work on or with the product.

Define the machine operator's responsibilities -also with regard to observing road traffic regulations-, providing the operator with the authority to refuse instructions by third parties that are contrary to safety.

Do not allow persons to be trained or instructed or persons taking part in a general training course to work on or with the product without being permanently supervised by an experienced person.

Work on the electrical system and equipment of the product must be carried out only by a skilled electrician or by properly instructed persons working under the supervision and guidance of a skilled electrician and in accordance with electrical engineering rules and regulations.

Work on the hydraulic system must be carried out only by person with special knowledge and experience of hydraulic equipment.

1.4 Normal operation of the machine

Before beginning work, familiarize yourself with the surroundings and circumstances of the site, such as obstacles which might impede work or traffic, the soil bearing capacity and the required safety measures, e.g.

barriers separating the work site from public traffic.

Avoid any operational mode that might be prejudicial to safety. Check the range in gas-, water- and power supply lines before working. Take the necessary precautions to ensure that the machine is used only when in a safe and reliable state. Operate the machine only if all protective and safety oriented devices, such as removable safety devices, emergency shut-off, sound-proofing elements and exhausters, are in place and fully functional.

Check the machine at least once per working shift for obvious damage and defects. Report any changes to the competent person immediately. If necessary, stop the machine immediately and lock it.

In the event of malfunctions or changes in the machine's behaviour, stop the product immediately and secure it against restarting. Have any defects rectified immediately!

Take precautions to ensure that the operator always has an adequate view of the work. Before leaving the machine always secure it against inadvertent movement and unauthorized use!

Cutting has to be operated wet in order to prevent the occurrence of harmful particulate matter and to increase the lifetime of the cutting tool.

During start-up and shut-down procedures always watch the indicators in accordance with the operating instructions. Noise protection equipment on the machine has to be in protective position during operation. Wear the prescribed personal ear protection!

Avoid any operation that might be a risk to machine stability. Always keep at a distance from the edges of building pits and slopes. The machine is designed for use in daylight! The machine operator/owner must ensure sufficient workplace lighting for non-illuminated work sites! Before leaving the machine always secure the machine against inadvertent movement and unauthorized use.

1.5 Special work related to the maintenance and repair of the machine

Observe the adjustment, maintenance and inspection activities and intervals set out in the operating manual, including information on the replacement of parts or assemblies! These activities may be performed by skilled personnel only.

Brief the operating personnel before initiating special repair or maintenance activities. Appoint a person to supervise such activities. In any work concerning the operation, adaptation to production requirements, conversion or adjustment of the machine and its safety-oriented devices or any work related to inspection, maintenance and repair, always observe the start-up and shut-down procedures described in the operating manual as well as the instructions on maintenance activities!

If necessary, secure a large area around the location where maintenance of the machine is to be performed. Maintenance and repair work may be carried out only if the machine is placed on level and solid ground and secured against inadvertent movement. If the machine is completely shut down for maintenance or repair work, it must be secured against inadvertent restarting.

When using a lifting gear for replacing individual parts or large assemblies make sure that the parts/ assemblies are carefully attached to the lifting gear and secured in place to avoid hazardous conditions. Use only suitable and technically perfect lifting gear and suspension systems with adequate lifting capacity! Never work or stand under suspended loads! The fastening of loads and the instructing of crane/industrial truck operators should be entrusted to experienced persons only! The instructor must be within sight or sound of the operator. Use an intercom system if necessary.

When carrying out overhead work always use specially designed or other safety-oriented ladders and working platforms. Never use machine parts as a climbing aid!

Wear a safety harness when performing maintenance work at greater heights! Keep all handles, steps, handrails, platforms, landings and ladders in a clean condition! Before performing any maintenance/ repair activities clean the machine, especially the connectors and screwed joints, and remove any oil, dirt and preservative agents. Never use aggressive detergents! Use lint-free cleaning rags!

Before cleaning the machine with water or other cleaning agents cover or tape up all openings which - for safety and functional reasons- must be protected against the ingress of water/ steam/ cleaning agents. Special care must be taken with bearings, electric motors and electronic systems. After cleaning, make sure to remove all covers/ tapes from the openings.

After cleaning, check all cables for leaks, loose connections, chafe marks and damage! Have any defects found rectified immediately! Always retighten any screwed connections that have been loosened during maintenance/repair activities! Any safety devices removed for set-up, maintenance or repair purposes must be refitted and checked immediately upon completion of the set-up, maintenance or repair work.

Avoid any operation that might affect the stability of the machine. Always keep a sufficient distance from the edges of excavations, ditches and slopes! Before leaving the machine always secure it against inadvertent movement and unauthorized use! Ensure that all process materials and replaced parts are disposed of safely and with minimum environmental impact!

1.6 Information about special risks electrical energy

Observe the relevant national regulations or standards. Electrical connections must always be kept free from dirt and moisture. Use only original fuses with the specified rating! Switch off the machine immediately, if trouble occurs in the electric power supply!

When working with the machine, maintain a safe distance from overhead electric lines. If work is to be carried out close to overhead lines, the working equipment must be kept well away from them.

Caution, danger! Check out the prescribed safety distances.

If your machine comes into contact with a live wire:

- warn others against approaching and touching the machine
- have the live wire de-energized

Work on the electrical system or equipment may only be carried out by a skilled electrician himself or by specially instructed personnel under the control and supervision of such electrician and in accordance with the applicable engineering rules. If provided for in the regulations, the power supply to parts of machines and plants, on which inspection, maintenance and repair work is to be carried out must be cut off. Before starting work, check the de-energized parts for the presence of power and ground or short-circuit them in addition to insulating adjacent live parts and elements. The electrical equipment of machines is to be inspected and checked at regular intervals.

Defects such as loose connections or scorched cables must be rectified immediately. Necessary work on live parts and elements must be carried out only in the presence of a second person who can cut off the power supply in case of danger by actuating the emergency shut-off or main power switch.

Secure the working area with a red-and white safety chain and a warning sign. Use insulated tools only.

If mobile electrical equipment, connecting cables and/ or extension/ appliance cords with plug connectors are used, ensure that such equipment, cables and cords are checked for correct function at least once every six months by a qualified electrician or - if suitable testing equipment is available - by a properly instructed person.

Protective installations with fault-current protection units used in non-stationary equipment must be checked for correct operation at least once a month by a properly instructed person. Fault-current and fault-voltage protection units must be checked for correct operation by actuating the testing facility:

- once on every working day in the case of mobile equipment,
- at least once every six months in the case of stationary equipment.

1.7 Gas, dust, steam, smoke

Operate internal combustion engines only on adequately ventilated premises. Before starting the machine on enclosed premises, make sure that there is sufficient ventilation! Danger of life!

Carry out welding, flame-cutting and grinding work on the machine only if this has been expressly authorized, as there may be a risk of explosion and fire.

Before carrying out welding, flame-cutting and grinding operations, clean the machine and its surroundings from dust and other inflammable substances and make sure that the premises are adequately ventilated (Risk of explosion). Observe the regulations in force at the respective site!

1.8 Hydraulic

Work on hydraulic equipment may be carried out only by persons having special knowledge and experience in hydraulic systems. Check all lines, hoses and screwed connections regularly for leaks and obvious damage.

Repair damage immediately. Splashed oil may cause injury and fire. Depressurize all system sections and pressure pipes to be removed for the unit concerned before carrying out any repair work.

Hydraulic must be laid and fitted properly. Ensure that no connections are interchanged. The fittings, lengths and quality of the hoses must comply with the technical requirements.

1.9 Noise

During operation sound protection devices on the machine must be in safe position. Wear the prescribed personal ear protection! (UVV 29 § 10, Article 29 of the Accident Prevention regulations).

The use of noise emitting machines may be restricted to certain times by national or local regulations.

1.10 Oils, greases and other chemical substances

When handling hydraulic fluids, lubricating fluids, greases or preservatives (called operating materials and lubricants in the following), the safety regulations applicable for the respective product must be observed!

Avoid prolonged contact of operating materials and lubricants with the skin!

The skin must be carefully cleaned of adhering operating materials and lubricants!

Exercise caution when handling hot operating materials and lubricants, as there is a danger of burns or scalding. Particularly at liquid temperatures above 60°C, avoid any skin contact with these liquids!

If operating materials or lubricants get into the eyes, flush thoroughly with drinking water. Then visit a doctor! Immediately clean up any operating materials and lubricants which have leaked out. Use absorbent material for this purpose!

Operating materials or lubricants must not be allowed to seep into the soil or to get into the public sewerage system!

Properly collect, store and dispose of operating materials and lubricants which can no longer be used!

Observe and follow the respective applicable laws and regulations for handling operating materials and lubricants and their disposal in the country in which these substances are used! Obtain information from the responsible agencies!

1.11 Changing the location of the machine

Use only suitable means of transport and lifting gear of sufficient capacity when loading or transporting the machine! Appoint an experienced instructor for the lifting operation!

Always observe the instructions given in the operating manual when lifting the machine (use only the prescribed lifting eyes for attaching the lifting gear)! Use only suitable transport vehicles with sufficient load capacity!

Secure the load carefully. Use suitable fastening points for securing!

Before loading the machine or parts of it, secure the machine/ parts against inadvertent movement!

Attach a suitable warning sign!

Before using the machine again, make sure that such protection material or devices are properly removed!

Parts which had to be removed for transporting of the machine must be refitted and secured carefully before the machine is used again!

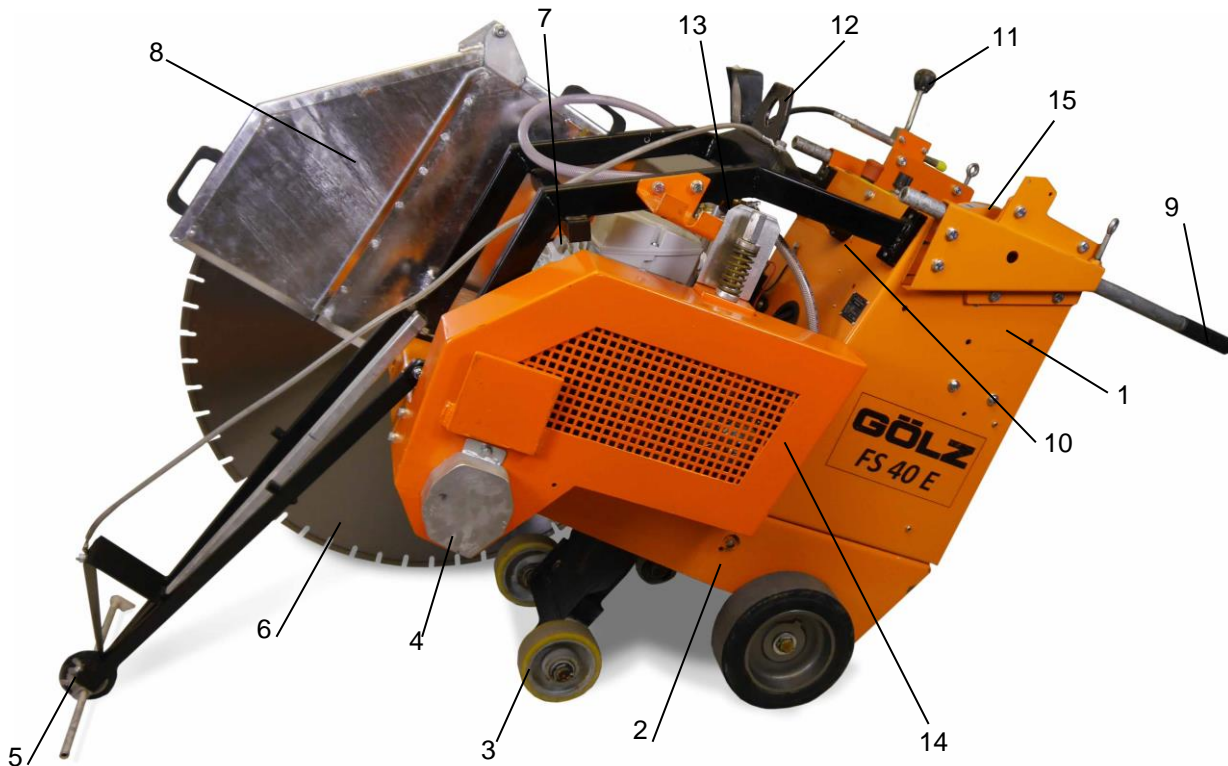
Even when the transport of the machine only involves a minor relocation, disconnect it from all external power supply lines!

Before using the machine again, make sure that the connection to such external supply lines is re-established properly. The recommissioning procedure must be strictly in accordance with the operating manual! Observe the instructions given in the operating manual when reassembling and operating the machine. Before setting the machine in motion always check that all accessories are safely stowed. In general the machine is transported dismantled into its modular components. To move the machine at the construction site, fix the swivelling rolls and carry the wire saw like a wheelbarrow.

2. Description

Operate the machine only using tools in accordance with the manufacturer's instruction. Using other tools is considered contrary to its designated use. The manufacturer cannot be held liable for any damage resulting from such use. The risk of such misuse lies entirely with the user.

2.1 Main parts



- 1. Control panel
- 2. Floor panel
- 3. Under carriage
- 4. Flange guard
- 5. Pointer unit

- 6. Blade
- 7. Drive motor
- 8. Blade guard
- 9. Adjustable push handles
- 10. Connector headlight

- 11. Feed-control lever
- 12. Lifting bow
- 13. V-belt tensioner
- 14. V-belt guard
- 15. Depth control

2.2 Safety devices



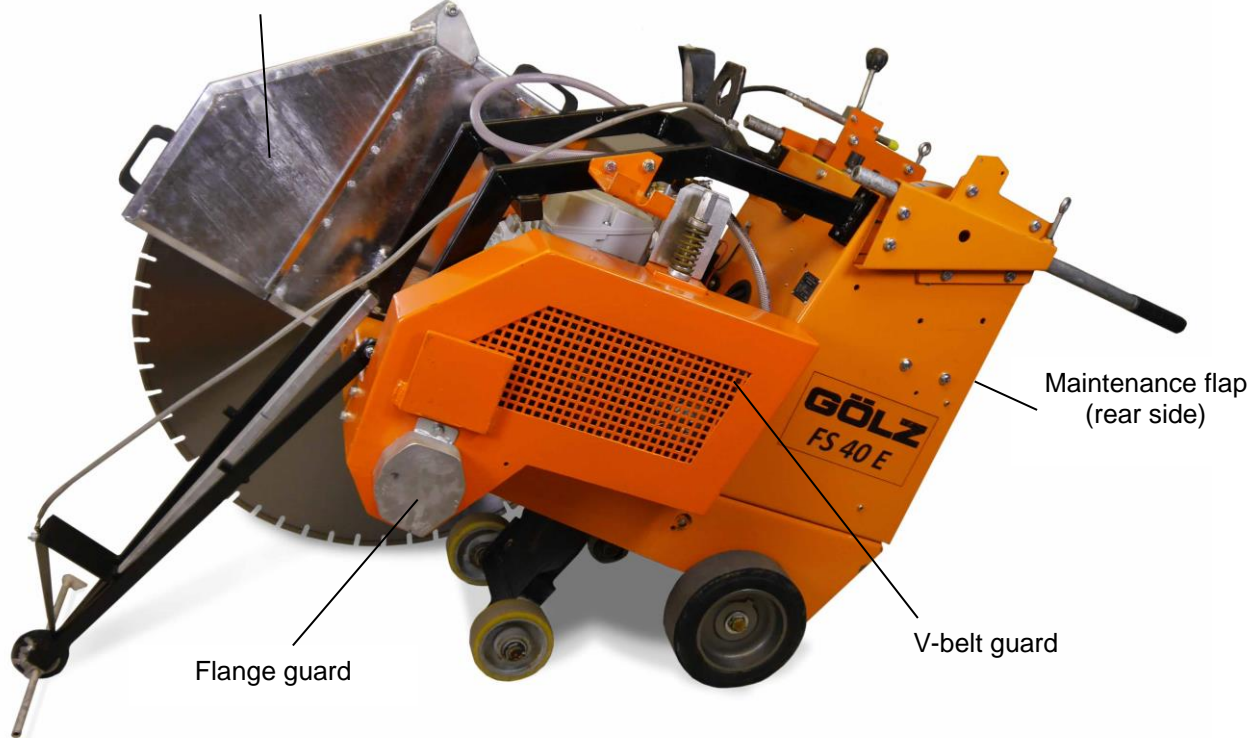
During cutting or displacing the floor saw, all safety devices shown below must be mounted!

FS 40 E

Translation of the original operating instruction and spare parts list



Blade guard for max. blade size of Ø1000 mm – Ø 39.4"
with spindle shaft guard



2.3 Technical data

Max. cutting depth	400 mm - 15.7"
Max. blade-Ø	1000 mm - 39.4"
Flange size	Ø 180 mm - 7.1"
Blade shaft size	Ø 25,4 mm – 1"
Engine	Three-phase motor 400V; 15 kW; 32A IP45
Max. cutting speed with blade	53 m/s - 173.9 ft./sec.
Engine speed	1450 rpm
Blade shaft speed	1015 rpm
Feed	Electro-hydraulically
Lifting	Electro-hydraulically
Water supply	Connection for external water supply
V-belt tension	semi-automatic
Dimensions (L x W x H)	ca. 1150 x 800 x 1210 mm approx. 45.3" x 31.5" x 47.6"
Weight	ca. 418 kg - 921 lbs.
Sound power level after DIN ISO 6393	No load = 100 dB(A) Full load = 119 dB(A)

Sound pressure level after DIN ISO 6393	No load = 80 dB(A) Full load = 100 dB(A)
Vibration ISO 5349 VDMA 03/2006	a = 3,7 m/s ²

3. Transport

	Injury hazard: Down coming parts!
--	--

	Injury hazard: Sharp edges!
--	------------------------------------

3.1 Preparation

Push the main switch on the control panel before transporting. Dismount the blade and attach again the blade guard.

Immediately after completion of the loading operations the machine must be secured with lashing straps or similar at the fixing points (2x at the back of the machine, 1x at the front).

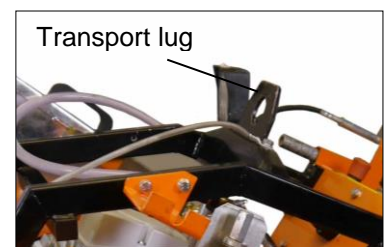
	Danger: Only use the lifting eye for lifting the machine!
--	--

	During cuts displace the machine only with non-rotating blade (not running engine)! Use the electro-hydraulically traction drive which can be actuated after pulling the battery switch.
--	---

	Information: The max. time of using the electro-hydraulically traction drive should not exceed 30 minutes. Otherwise it may result in discharge of the battery and the battery can be damaged!
--	---

3.2 Transporting

Check that all parts of the machine are well fastened before transporting. For loading only use lifting gear and tackle of sufficient capacity (kerb weight of the machine approx. 418 kg -921 lbs.). Lift the machine using the lifting eye.



3.3 Store

Store the machine in a dry, high or locked place, out of the reach of children or unauthorized persons. Clean and preserve the machine with corrosion preventive if storing over a longer time like winter time!

Note: Store dismantled blades so, that the blades not exposed to mechanical damages and harmful environmental conditions (UV radiation, temperature, humidity, etc.).

	Attention: Store blades just standing or hanging!
--	--

4. Operation

	Danger: Never touch rotating parts like blade shaft or blade while operating!
--	--

	Danger: Rotating parts may pull in clothing! Wear tightly clothing!
--	--

	Danger: Down coming parts can cause injuries to the operator!
--	--

Operating elements on the control panel

1. Depth control
2. Amperemeter
3. Traction drive / Override
4. Water pump ON-OFF
5. Traction drive ON-OFF
6. Lifting
7. Control lamp battery
8. Main switch
9. Star-delta switch
10. Lowering
11. Emergency stop control
12. Feed FORWARD/BACKWARD

Place the machine on an even, firm and stable ground. Have the working area well lightened. Keep the working area clean, cluttered areas invite injuries. Operating the machine on enclosed premises, make sure that there is sufficient ventilation. Observe the regulations in force at the respective site.

Observe the manufacturer's information for connecting power and water supply.

Run all hydraulic lines or cables in away that damages will be prevented. Mount the blade to the manufacturer's odds (Observe the min. flange-Ø; use only original screws or nuts). Use only blade diameters which are allowed by the manufacturer.

The working area is reserved only for the operator. Keep unauthorized persons out of the working area. Make sure the operator always has well sight to the working area. He always has to intervene in the working process.

Never operate the machine without mounted safety devices. Check the blade is well fastened before beginning to operate.

Check the correct water flow to the blade when working with wet cut. If harmful or explosive stuffs like dust, milk-of-lime arise while cutting, observe local regulations.

In case of danger ejected cause by material particles during the cutting process wear protective goggles.



Danger: Demolitioning parts can cause injuries to the operator while cutting!

When travelling on public roads, ways and places always observe the valid traffic regulations and, if necessary, make sure beforehand that the machine is in a condition compatible with these regulations.

After operating secure the machine against unintentional moving.



Danger: The sound pressure may exceed 85 dB(A)!

Appropriate to the application of the machine it could be necessary to wear further protective equipment.



Danger: Down coming parts at the building site can cause injuries to the operator!

4.1 Mounting the blade

All used cutting discs must be designed, regarding their maximum admissible cutting speed, for the max. drive speed of the machine. For machines with variable drive speed, use cutting discs which, regarding their maximum admissible cutting speed, correspond to the respective maximum drive speed of the machine. Never use faulty or damaged blades.



Danger: Faulty or damaged blades can cause injuries to the operator and other persons!



Information: Wrong rotation of the blade will result in more wear of the blade!



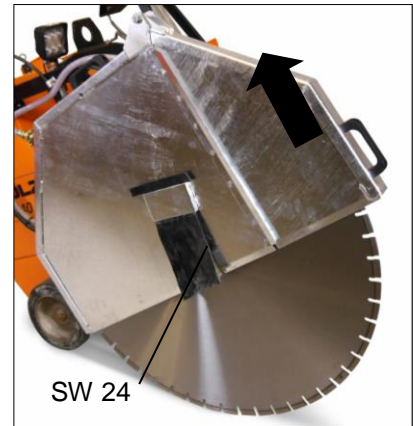
Danger: Incorrect direction of rotation can cause a segment of the cut-off wheel to become detached, resulting in serious personal injury!

Use the corresponding cutting discs depending on the material to be processed, the machining process and the type of work to be performed!

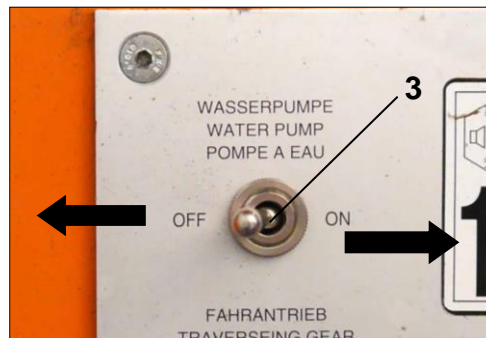
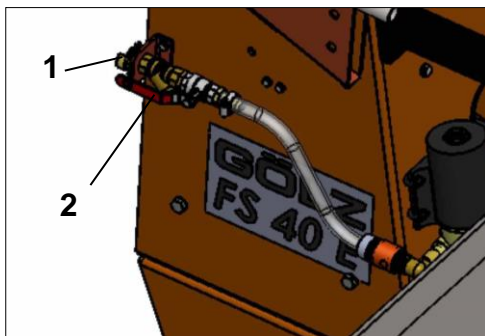
i	Information: Clean all fastening devices of the blade (flanges, thread of the blade shaft, screws and nuts) before mounting the blade!
----------	---

Cut off the engine, press the emergency stop button or disconnect the power supply before mounting or changing blade.

Before mounting the blade, turn off the main switch at the control panel. Mount a blade with arbor hole of 25,4 mm - 1". and a max. blade size of Ø 1000 mm - 39.4" Check the correct rotation - arrows on the blade and blade guard. Attach the blade guard.



4.2 Water supply



3. Water pump ON-OFF

	Attention: Avoid dry-running of water pump! Drain the water pump if frost will appear!
--	---

By using a GEKA-coupler, connect the water supply to the machine coupler (1). Check the ball valve (2) is closed (ball valve lever in 90°-position to the water flow) and the switch for the water pump (3) is in Off-position.

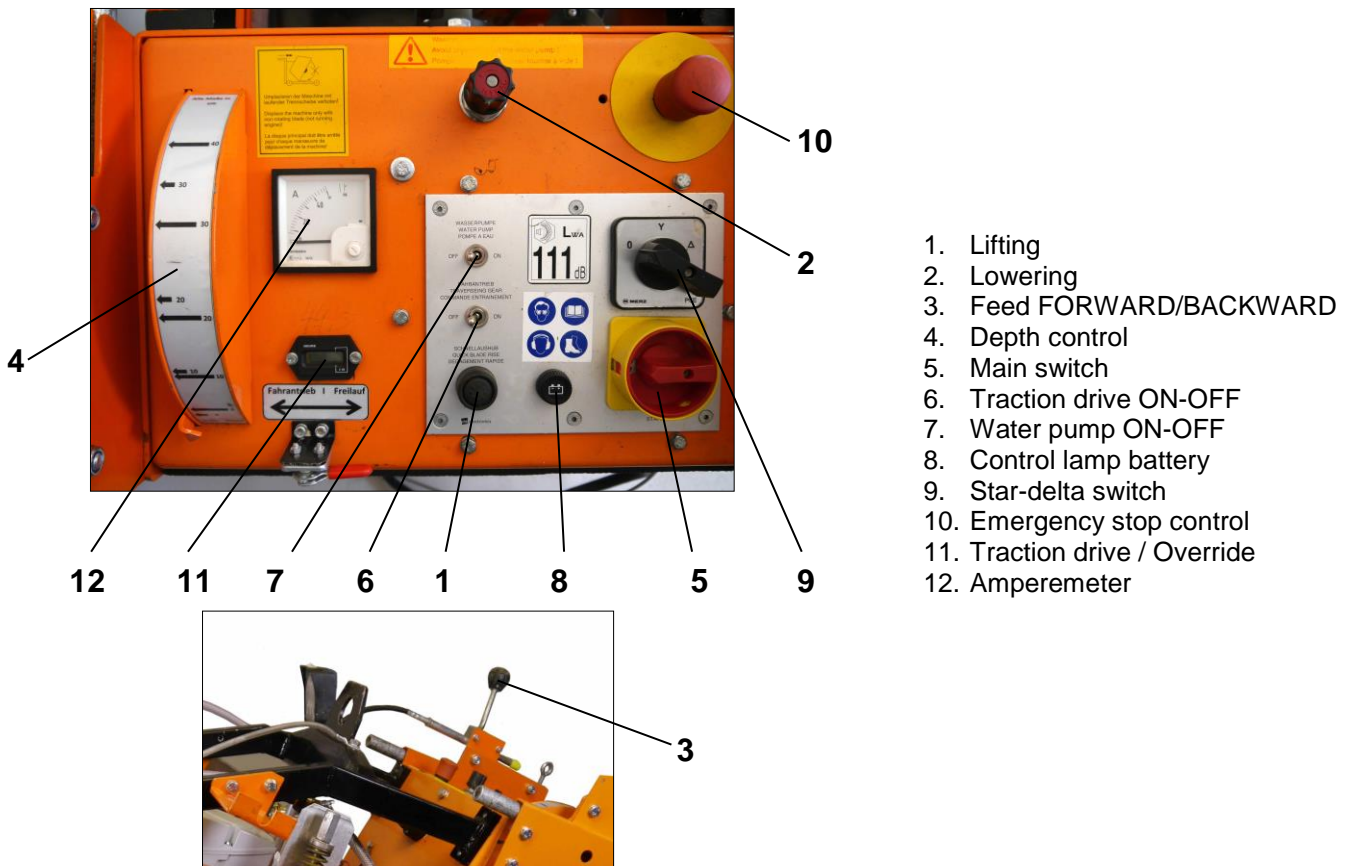
Water supply from waterworks:


Open the ball valve (2) (ball valve lever in the water flow position) Switch the water pump (3) in OFF-position.

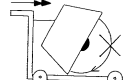
Water supply from water reservoir:


Open the ball valve (2) (ball valve lever in the water flow position) Switch the water pump (3) in ON-position.

4.3 Cutting operation



 **Danger: Operating with too high feed the machine might rise out of cut! In emergency situations shut down the machine immediately by pushing the emergency shut-off (10)!**

 **During cuts displace the machine only with non-rotating blade (not running engine)!**

 **Before switching on the traversing gear the lever (3) must be definitely in 0-position , otherwise the machine starts directly. The 0-position does not shut down the traversing gear!**

Ensure power-supply matches with details from motor rating-plate: Input voltage: 400 V/50 Hz, Fuse protection: 32 A. The used power supply has to conform the instructions of assembly for construction site (ACS) (Error current protective circuit, who works until max. 30 mA by main error current Only use extension cable with protective conductor (5-wire) and adequate wire cross section (min. 4mm²). Always unwind the whole cable roller. The main switch (5) must be on „0“-position. Insert the mains plug. Completely rise the floor saw (blade may have no ground contact). Start the electric motor by moving the starting switch (9) „1“-position. Move the main switch in triangle position and after some seconds in star position. Notice correct rotation of the electric motor. Wrong rotation - pull mains plug and turn the phase inverter with a screw driver. Repeat starting and move the starting switch in triangle position after the electric motor has maximum speed.

How described connect the water supply and slowly lower the floor saw turning the valve (2). Push the depth control to the correct 0-position of the blade Ø and slowly lower the floor saw to the required cutting depth. Switch ON the traversing gear with the switch (6) and select the correct feed with the feed control lever (3).

After cutting push the feed control lever (3) in 0-position and completely lift the floor saw with the press-bottom switch (1). Switch OFF the traversing gear with the switch (6) and close the water supply (first switch OFF the water pump and then close the ball valve). Shut down the electric motor by moving main switch (5) and starting switch (9) in „0“-position. Maximum longitudinal- and cross-position of the machine in parking position ≤ 10°.

5. Maintenance

5.1 General

- Information: Unconditionally observe the owner's manual of the engine manufacturer, which is added!**
- Information: Clean the machine after every operation. Observe local environmental regulations!**
- Attention: Drain the water pump if frost will appear!**
- Attention: Work on hydraulic equipment may be carried out only by persons having special knowledge and experience in hydraulic systems!**
- Attention: When handling oil, grease and other chemical substances, observe the product-related safety regulations!**

For maintenance jobs the machine has to be shut down. For maintenance jobs which must be done while the machine is running, the blade has to be dismantled before beginning the job.

In accordance to the given periods, the subsequently described maintenance work has to be enforced.

Also the wearing parts subject to no certain maintenance-intervals have to be checked regularly for wear and to adjust if necessary or to exchange. With I.C. engines, the maintenance work has to be enforced in accordance with the separate maintenance-instruction of the engine manufacturer.

		Before starting work	After work	Weekly	Yearly	In the event of a malfunction	If damaged
Complete machine	Visual inspection (condition, absence of leaks)	X				X	X
	Clean		X				
Flange and blade holder	Clean			X			
V-belts	Check	X		X		X	X
	Replace				X		
Water nozzle and feeding hoses	Clean		X			X	
Tools	Check	X				X	X
	Replace						X

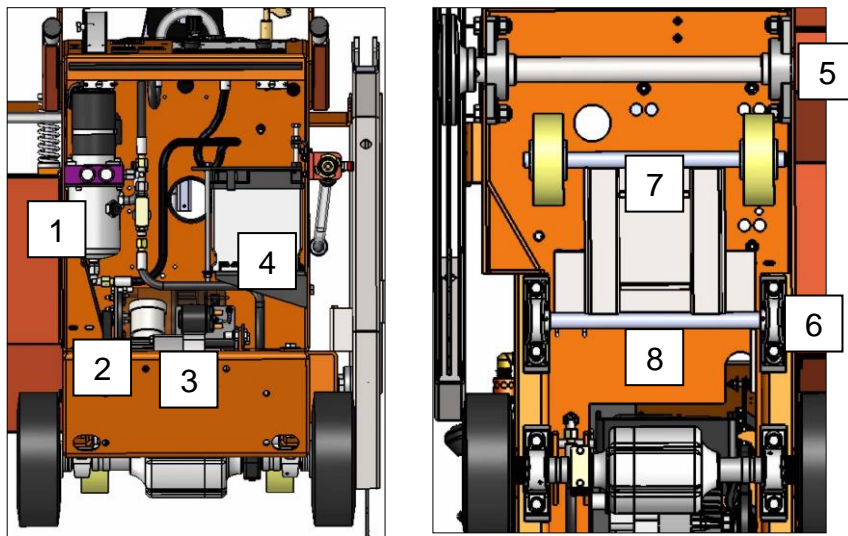
5.2 V-belts changing

The blade shaft V-belts are maintenance-free. Re-tensioning of the V-belts is no longer required thanks to a continuous V-belt tensioning device. Dismount the V-belt guard and flange guard. Declamp the pressure spring with a spanner. Now the tensioning device can be turned away and the V-belts can be easily replaced. Clamp the V-belts and finally mount the V-belt guard and flange guard.



Danger: Unintentional striking back of the V-belt tensioner can cause pinching injuries to the operator!

5.3 Lubrication chart



- | | |
|-------------------------------|--|
| 1. Hydraulic power unit: | Oil change after 1000 working hours or once a year
0,9 Litre - 55 cu. in. ATF |
| 2. Static displacement drive: | Oil change after 500 working hours or once a year
0,65 Litre - 40 cu. in. HLP46 |
| 3. Driving axle: | Oil change after 500 working hours or once a year
1,3 Litre - 79 cu. in. SAE90 |
| 4. Battery: | Check fluid level once a month and refill with distilled water if necessary |
| 5. Spindle shaft bearings: | After 20 working hours grease with heat resistance fat |
| 6. Undercarriage bearings: | After 20 working hours grease with heat resistance fat |
| 7. Hydraulic cylinder bolts: | Clean from time to time and grease with some drops of oil |
| 8. Front axle: | Clean from time to time and grease with some drops of oil |

6. Troubleshooting

	Attention: In the event of changes in the behaviour of the floor saw during operation, stop the machine immediately and report the malfunction to the competent authority/person!
--	--

Problem	Cause	Remedy
Motor		
Motor does not run!	Mains plug not connected	Check for correct connection
	Fuse of power distribution on building sites has been released	Check fuses
	Malfunction of electrical installation	Electric installation needs to be checked by a qualified person
Motor shut-down!	Motor works in overload conditions	switching on the motor again
Lifting device		
Machine lower with closed flow control valve!	Faulty lifting cylinder	Replace
	Leaking lifting cylinder	Replace seals if necessary
	Hydraulic system leaking	Tighten connections
Machine does not fully lower!	Lifting cylinder or undercarriage tight	Replace lifting cylinder or straighten undercarriage
	Depth stop screw not correctly adjusted	Adjust
Machine does not fully lift!	Oil level in the hydraulic power unit too low	Öl nachfüllen
	Air in hydraulic system	Ventilate
Feed		
No feed!	Faulty toothed belt	Replace
	Malfunction of electrical installation	Have electrical installation checked (Fuses inside the dashboard)
Jerky feed!	Oil level in the static displacement drive too low	Refill
Slippy driving wheel!	Oily rubber bandages	Clean
	Only one driving wheel in ground contact	Check undercarriage on even surface, straighten if it is warped

7. Spare parts list

7.1 Using the spare parts list

The spare parts list is not a mounting or dismounting instruction. The only purpose of the spare parts list is to easily and quickly find spare parts which can be ordered with distribution agencies, see chapter 7.1.3 "Distribution agencies".

7.1.1 Safety regulation



Danger: Mounting or dismounting assembly groups can give rise to risks which are not mentioned in the spare parts list!

Using this spare parts list for mounting or dismounting purposes is not permitted. For assembly and disassembly work exclusively the corresponding descriptions in this operating manual are to be followed.



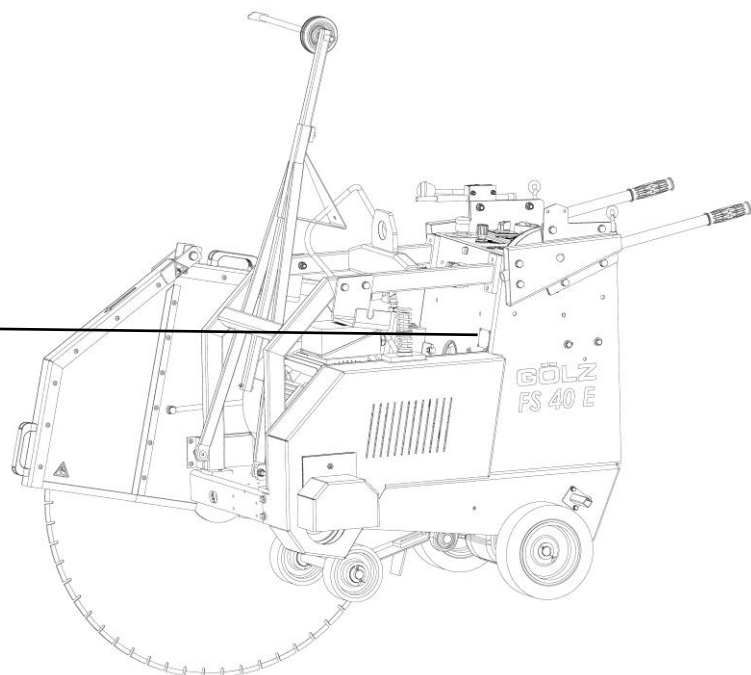
Danger: Non-observance of this instruction can result in injury which, in the worst case, can result in death!

7.1.2 Ordering information



Note: In order to avoid wrong deliveries the information the ordering information should be checked for accuracy and completeness before sending it! Completely indicate the delivery address!

GÖLZ GmbH	
D-53940 Hellenthal Tel.: 02482/120	
Made in Germany	
Typ	<input type="text"/>
Baujahr	Masch.-Nr.:
<input type="text"/>	<input type="text"/>
Gew. KG	nW
<input type="text"/>	<input type="text"/> CE



So bekommen Sie schnell und richtig Ihr Ersatzteil	Always indicate	Pour obtenir rapidement les pièces de rechange indiquer
<ul style="list-style-type: none"> • Maschinentyp gemäß Typenschild • Baujahr gemäß Typenschild • Artikelnummer gemäß Ersatzteilliste • Maschinenummer gemäß Typenschild 	<ul style="list-style-type: none"> • machine type according to nameplate • year of manufacture according to nameplate • order number according to spare part list • serial number according to nameplate 	<ul style="list-style-type: none"> • type de la machine conforme de plaque d'identification • Année de construction selon plaque d'identification • Numéro de l'article selon la liste des pièces de rechange • numéro de la machine conforme de plaque d'identification
Für Bestellungen, Fragen und Informationen wenden Sie sich bitte an die zuständigen Stellen.	For orders, questions and information, please contact the competent departments.	Pour les commandes, questions et informations, veuillez-vous adresser aux points de ventes correspondants.

7.1.3 Distribution agencies

<p>Deutschland – Germany - Allemagne GÖLZ® GmbH Dommersbach 51 53940 Hellenthal Tel: +49 (0)2482-120 Fax: +49 (0)2482-12135 E-mail: info@goelz.de / Internet: www.goelz.de</p>	
<p>Österreich - Austria - Autriche GÖLZ® Ges.m.b.H Münchner Bundesstraße 144 A-5020 Salzburg Tel: +43 (0) 662 - 43 81 75 Fax: +43 (0) 662 - 43 07 34 E-mail: info@goelz.at / Internet: www.goelz.at</p>	<p>Frankreich - France - France GÖLZ® S.A.S. 1, rue de la Mairie F-67370 Berstett Tel: +33 (0)3.88.59.43.00 Fax: +33 (0)3.88.59.47.77 E-mail: info@golz.fr / Internet: www.golz.fr</p>
<p>Grossbritannien - Great Britain - Grande-Bretagne GÖLZ® (UK) Ltd. Unit A5, Springhead, Enterprise Park Northfleet Kent DA11 8HB Tel: +44 1 474321679 Fax: +44 1 474321477 E-mail: info@goelz.co.uk / Internet: www.goelz.co.uk</p>	<p>Benelux GÖLZ® Benelux Eupener Straße 61 4731 Raeren-Eynatten Tel: +32 (0) 47 54 71 799 Fax: +32 (0) 13 78 33 28 E-mail: benelux@goelz.de / Internet: www.goelz-online.com</p>
<p>Australien - Australia - Australie GOLZ® Pty Ltd. 44 Stanley Street Peakhurst, NSW 2210 Tel: +61 (0) 2 9534 5599 Fax: +61 (0) 2 9534 5588 E-mail: info@golz.com.au / Internet: www.golz.com.au</p>	<p>USA GOLZ® L.L.C. 5860 East Osage Ridge Lane Columbia MO 65203-6018 Tel: +1 573 474 4961 E-mail: info@golzusa.com Internet: www.goelz-online.com</p>

7.2 Wearing parts

Wearing parts for construction devices mentioned in the operating manual such as drilling and sawing machines.

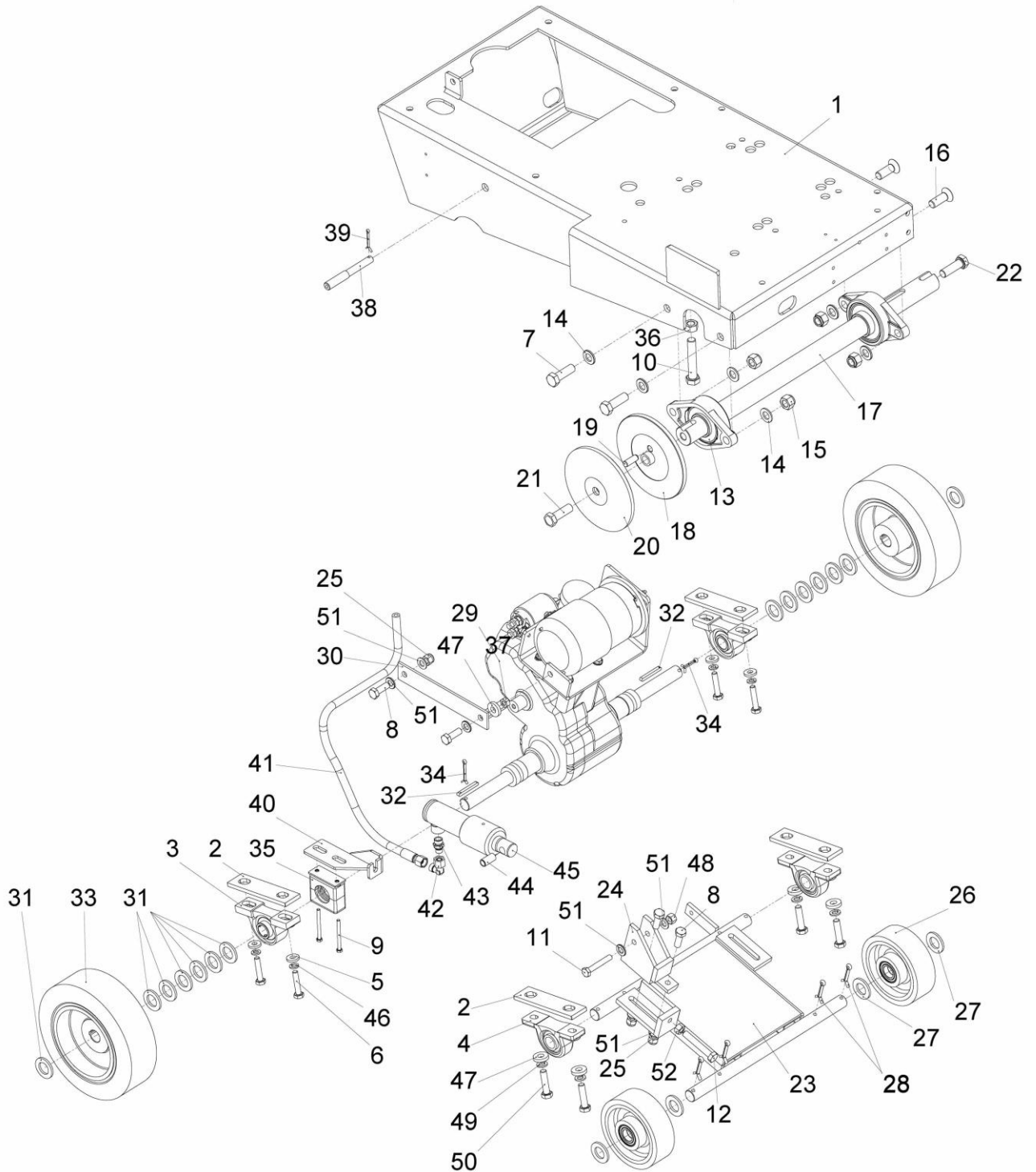
Wearing parts are the parts subject to operation-related (natural) wear during proper use of the device. The wearing time cannot be uniformly defined, and differs according to the intensity of use. The wearing parts must be adjusted, maintained and, if necessary, replaced for the specific device in accordance with the manufacturer's operating manual. Operation-related wear is not a reason for defect claims.

- Feed and drive elements such as toothed racks, gearwheels, pinions, spindles, spindle nuts, spindle bearings, cables, chains, sprockets, belts
- Seals, cables, hoses, packings, connectors, couplings and switches for pneumatic, hydraulic, water, electrical and fuel systems
- Guide elements such as guide strips, guide bushes, guide rails, rollers, bearings, sliding protection supports
- Clamping elements for quick-separating systems
- Flushing head seals
- Slide and roller bearings that do not run in an oil bath
- Shaft oil seals and sealing elements
- Friction and safety clutches, braking devices
- Carbon brushes, commutators / armatures
- Easy-release rings
- Control potentiometers and manual switching elements
- Securing elements such as plugs, anchors, screws and bolts
- Fuses and lamps
- Auxiliary and operating materials
- Bowden cables
- Discs
- Diaphragms
- Spark plugs, glow plugs
- Parts of the reversing starter such as the starting rope, starting pawl, starting roller and starting spring
- Sealing brushes, rubber seals, splash protection cloths
- Filters of all kinds
- Drive rollers, deflection rollers and bandages
- Cable anti-twist elements
- Running and drive wheels
- Water pumps
- Cut-material transport rollers
- Drilling, parting and cutting tools
- Energy storage

Wearing parts of this machine are grey marked in the spare parts list.

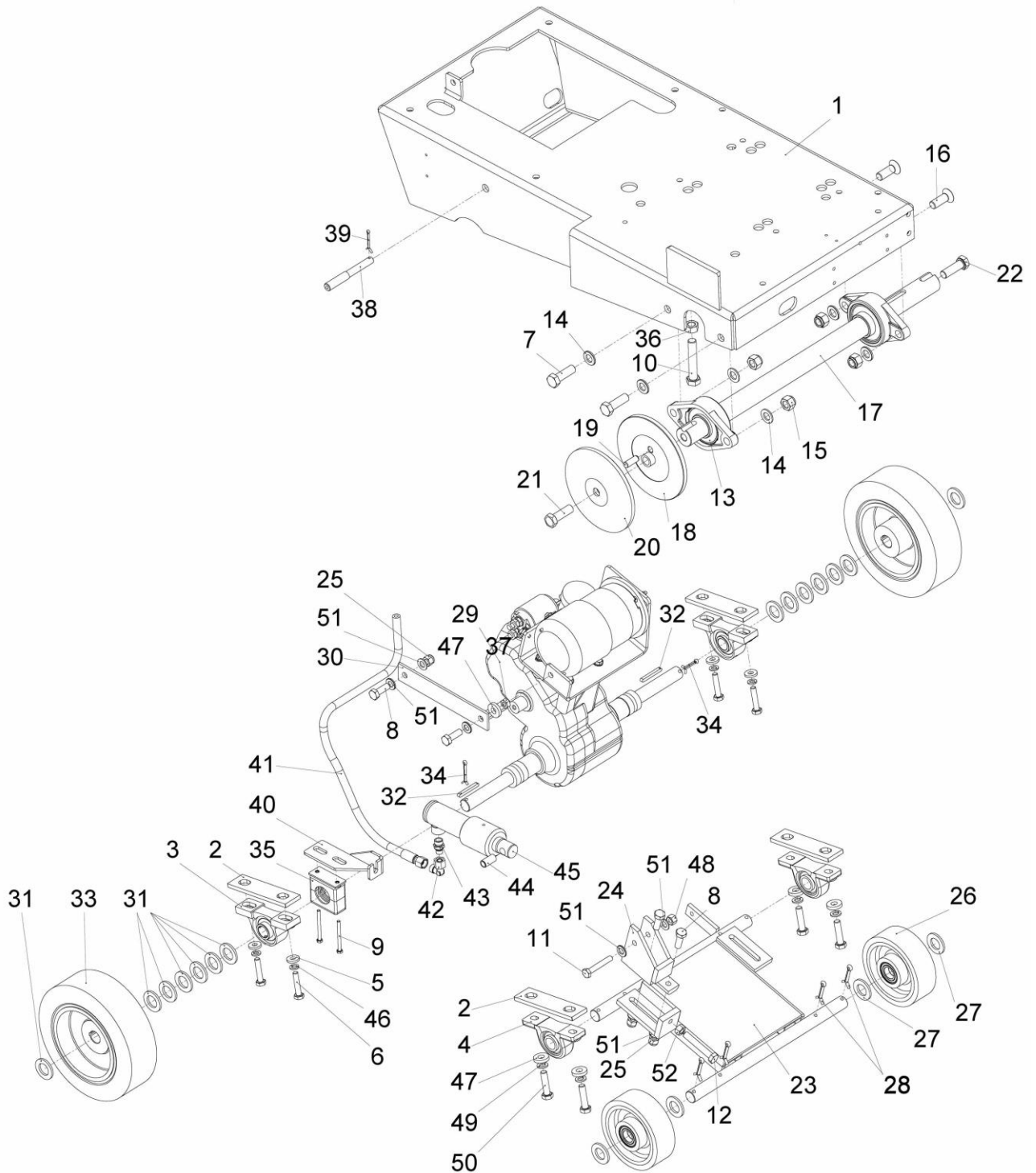
8. Exploded view and spare parts list

8.1 Undercarriage



Pos.	Art.-Nr.	K.-ZN.-Nr	Qty.	Norm / Info	Inhalt	Bezeichnung	Description	Désignation
-	0282 040 9010	5008288	1		Pos. 52	Fahreinheit kpl.	Chassis complete	Châssis complète

Pos.	Art.-Nr.	K.-ZN.-Nr	Qty.	Norm / Info	Bezeichnung	Description	Désignation
1	0282 250 0860	0004537	1		Bodenblech	Floor panel	Tôle de fond
2	0282 251 0029	4003651	4		Zwischenplatte Lager	Distance plate	Plaque d'écartement
3	0282 250 0511	5004241	2	UCP 205-16-1"	Stehlager	Pedestal bearing	Chaise palier
4	0282 065 0019	5001812	2	UCP205 - Ø 25	Stehlager	Pedestal bearing	Chaise palier
5	-	5001105	4	A 10,5 DIN 7349	Scheibe	Washer	Rondelle
6	-	5000737	4	M10x50 ISO 4017	Schraube	Screw	Vis
7	-	5000765	2	M16x50 ISO 4017	Schraube	Screw	Vis
8	-	5000748	4	M12x35 ISO 4017	Schraube	Screw	Vis
9	-	5000719	2	M6x70 ISO 4017	Schraube	Screw	Vis
10	-	5000770	1	M16x90 ISO 4017	Schraube	Screw	Vis
11	-	5000702	1	M10x65 ISO 4017	Schraube	Screw	Vis
12	-	5000754	1	M12x75 ISO 4017	Schraube	Screw	Vis
13	0282 450 0022	5001287	2	UCFL208-Ø40	Flanschlager	Flange bearing	Roulement avec flasque
14	-	5000345	6	B 17 ISO 7090	Scheibe	Washer	Rondelle
15	-	5000859	4	M16 ISO 7040	Mutter	Nut	Écrou
16	-	5000050	2	M16x45 ISO 10642	Schraube	Screw	Vis
17	0282 040 9024	5008391	1		Schneidwelle	Spindle shaft	Arbre
18	0282 252 0403	0005113	1		Schneidflansch innen	Inner flange	Flasque de fixation
19	0282 252 0098	0005129	1	12m6x32 ISO 8734	Zylinderstift	Dowel pin	Cheville cylindrique
20	0282 252 0404	0005114	1		Schneidflansch aussen	Outer flange	Flasque de fixation
21	0282 240 0044	5000157	1	M16x1,5x50 LH ISO 8676	Schraube	Screw	Vis
22	0282 240 0041	5000158	1	M16x1,5x50 ISO 8676	Schraube	Screw	Vis
23	0282 040 9011	5008271	1		Fahrwerk	Undercarriage	Chariot
24	0282 040 9069	5008399	1		Aufnahme Zylinder	Holder cylinder	Aufnahme Zylinder
25	-	5000858	3	M 12 ISO 7040	Mutter	Nut	Écrou
26	0282 250 0688	5000286	2	Ø 150/25K	Lauftrad	Front wheel	Roue d'avant
27	-	5000339	4	A 25 ISO 7089	Scheibe	Washer	Rondelle
28	-	5000321	4	6,3x40 ISO 1234	Splint	Splint pin	Goupille fendue
29	0282 251 0077	5005619	1		Elektroantrieb	Electric drive	Entraînement électrique
30	0282 251 0024	4003467	1		Drehmomentstütze	Torque rest	Support
31	-	5000359	14	26 ISO 7091	Scheibe	Washer	Rondelle



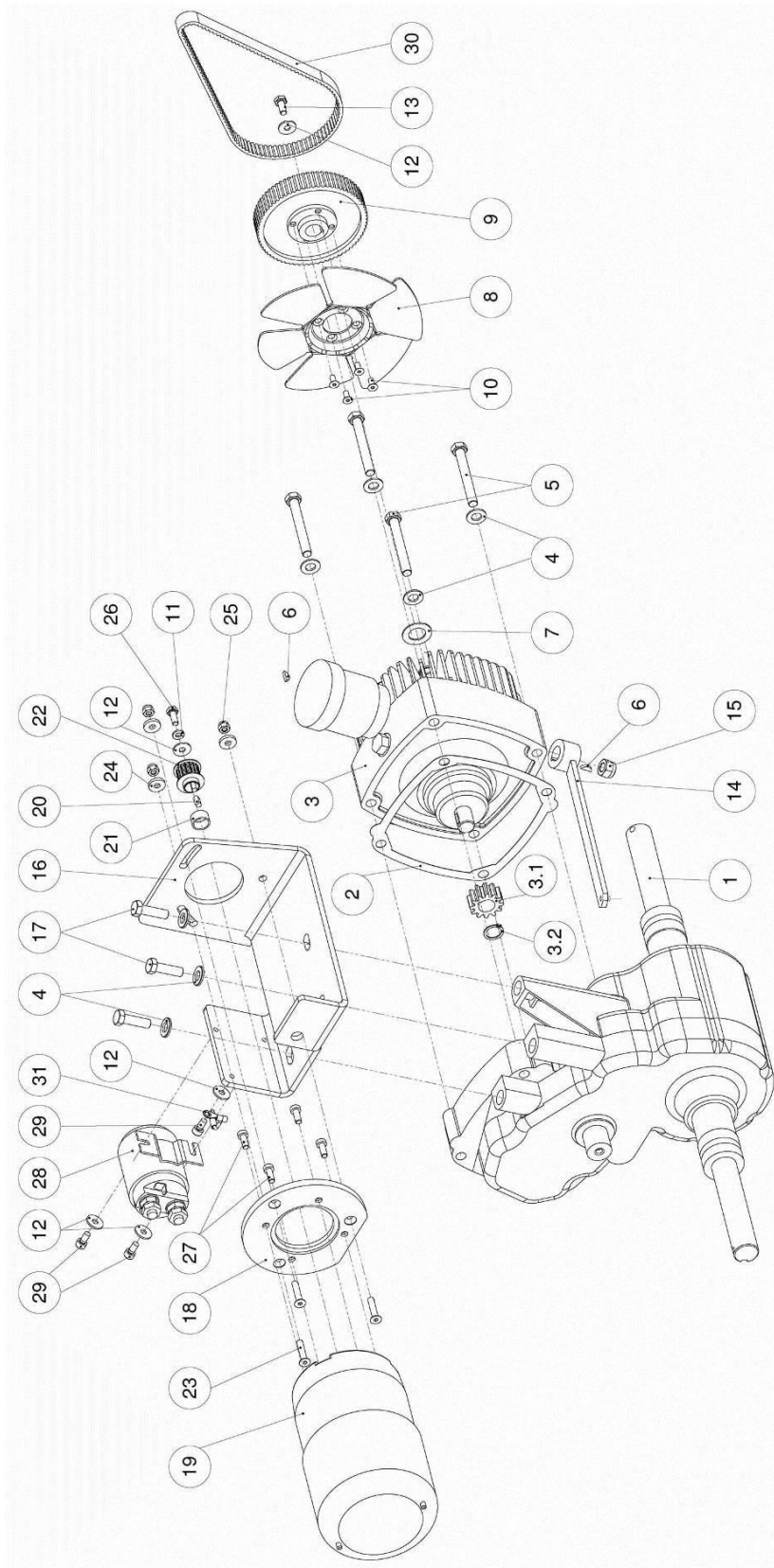
Pos.	Art.-Nr.	K.-ZN.-Nr	Qty.	Norm / Info	Bezeichnung	Description	Désignation
32	0282 250 0548	5001070	2	1/4" x 55 DIN 6885	Paßfeder	Key	Clavette
33	0282 250 0773	4003161	2		Antriebsrad	Driving wheel	Roue motrice
34	-	5000318	2	5 x 45 ISO 1234	Splint	Splint pin	Goupille fendue
35	0282 250 0523	5004253	1	Ø 40 DIN 3015	Befestigungsschelle	Pipe clamp	Collier de fixation
36	-	5000794	1	M16 ISO 4032	Mutter	Nut	Écrou
37	-	5000792	1	M10 ISO 4032	Mutter	Nut	Écrou
38	0282 200 0608	4002111	1		Aufnahmebolzen Hubzylinder	Bolt	Axe
39	-	5000315	1	4 x 40 ISO 1234	Splint	Splint pin	Goupille fendue
40	0282 251 0028	3002411	1		Vorschubzughalterung	Fixing	Fixation
41	0291 099	5004610	1	DN 08 x 750 DKOL	Schlauch	Hose	Tuyau
42	0282 450 0513	5000844	1	XEVW 10LV	Winkel	Elbow	Raccord
43	0291 1010	5000824	1	1/4" XGE 10L	Nippel	Fitting	Nipple
44	0282 040 9049	5008481	1	Ø15x2x30	Buchse	Bushing	Douille
45	0282 040 9047	5008480	1	EPL30-100	Hydraulikzylinder	Hydraulic cylinder	Cylindre hydraulique
46	-	5000362	4	A10 DIN 127	Federring	Spring washer	Rondelle-ressort
47	-	5001106	5	A 13 DIN 7349	Scheibe	Washer	Rondelle
48	0295 120 0027	5008643	1	M10	Hutmutter	Cover nut	Écrou coiffant
49	-	5000363	4	A12 DIN 127	Federring	Spring washer	Rondelle-ressort
50	-	5000751	4	M12x50 ISO 4017	Schraube	Screw	Vis
51	-	5000343	7	B 13 ISO 7090	Scheibe	Washer	Rondelle
52	-	5000793	1	M12 ISO 4032	Mutter	Nut	Écrou

FS 40 E

Translation of the original operating instruction and spare parts list



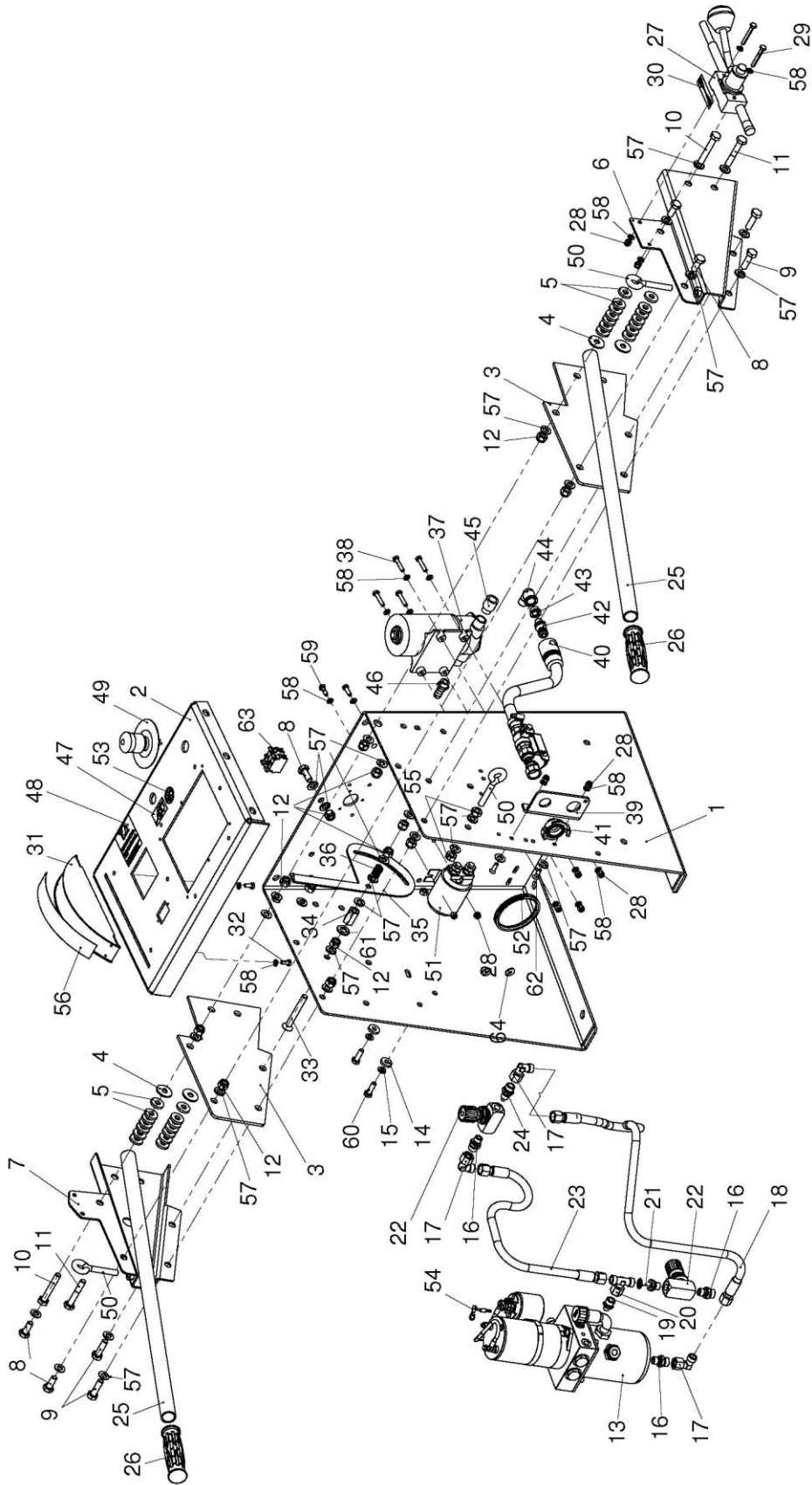
8.2 Electric drive



Pos.	Art.-Nr.	K.-ZN.-Nr	Qty.	Norm / Info	Inhalt	Bezeichnung	Description	Désignation
-	0282 251 0077	5005619	1		Pos. 1-31	Elektroantrieb	Electric drive	Entraînement électrique

Pos.	Art.-Nr.	K.-ZN.-Nr	Qty.	Norm / Info	Bezeichnung	Description	Désignation
1	0282 250 0501	5004230	1	Modell 1352	Antriebsachse	Driving axle	Arbre primaire
2	M788046	5004236	1		Dichtung	Seal	Garniture
3	0282 250 0168	5004229	1		Hydrostatisches Getriebe	Static displacement drive	Commande hydrostatiques
3.1	0282 250 0557	5005616	1	Z=12	Zahnrad	Gear wheel	Roue dentée
3.2	0267 118 0018	-	1	17x1 DIN 471	Sicherungsring	Circlip	Circlip
4	-	5000342	7	B 10,5 ISO 7090	Scheibe	Washer	Rondelle
5	0282 250 0583	5000635	4	UNC3/8"-16Gx3" ISO 4017	Schraube	Screw	Vis
6	-	5001074	2	3x5 DIN 6888	Scheibenfeder	Woodruff key	Clavette disque
7	0282 520 0084	4002081	1	Ø30xØ17,5x1,5	Scheibe	Washer	Rondelle
8	0282 251 0035	3003433	1		Lüfterflügel Vorschubeinheit	Fan blade	Ailette ventilateur
9	0282 250 0508	4003349	1		Zahnriemenscheibe	Crown gear	Roue plate
10	-	5000017	4	M 5x 12 ISO 10642	Schraube	Screw	Vis
11	-	5000367	1	B6 DIN 127	Federring	Spring washer	Rondelle-ressort
12	-	5001282	5	A 6,4 ISO 7093	Scheibe	Washer	Rondelle
13	0282 040 9058	5008479	1	1/4" x 3/4" ISO 4017	Schraube	Screw	Vis
14	0282 251 0033	4003388	1		Verstellhebel Getriebe	Adjusting lever	Lever variable
15	-	5000857	1	M10 ISO 7040	Mutter	Nut	Écrou
16	0282 251 0034	3003659	1		Aufnahme E-Motor	Motor acceptance	Logement du moteur
17	0282 250 0596	5000781	3	UNC3/8"-16x5/4" ISO 4017	Schraube	Screw	Vis
18	0282 250 0130	0004649	1		Motoraufnahmeplatte E-Motor	Motor acceptance plate	Logement plaque du moteur
19	0282 301 0192	5004060	1		E-Motor	Motor	Moteur
20	-	5001033	1	A5x5x12 DIN 6885	Passfeder	Key	Clavette
21	0282 250 0097	0004647	1	Ø18xØ15x10	Buchse	Bushing	Douille
22	0282 250 0135	0004650	1	Z16	Zahnriemenscheibe	Crown gear	Roue plate
23	-	5004918	3	M 6x 30 ISO 10642	Schraube	Screw	Vis
24	-	5001103	3	A6,4 DIN 7349	Scheibe	Washer	Rondelle
25	-	5000855	3	M6 ISO 7040	Mutter	Nut	Écrou
26	-	5000690	1	M 6 x 16 ISO 4017	Schraube	Screw	Vis
27	-	5001192	4	M6x16 DIN 7984	Schraube	Screw	Vis
28	0282 250 0699	5008275	1	12V 300A	Magnetschalter	Magnetic switch	Commutateur magnétique
29	-	5000551	3	M6x12 ISO 4762	Schraube	Screw	Vis
30	0282 250 0509	5004237	1		Zahnriemen	Toothed belt	Courrie dentée
31	0282 250 0705	4003522	1		Kabel Konf.	Cable	Câble

8.3 Control panel

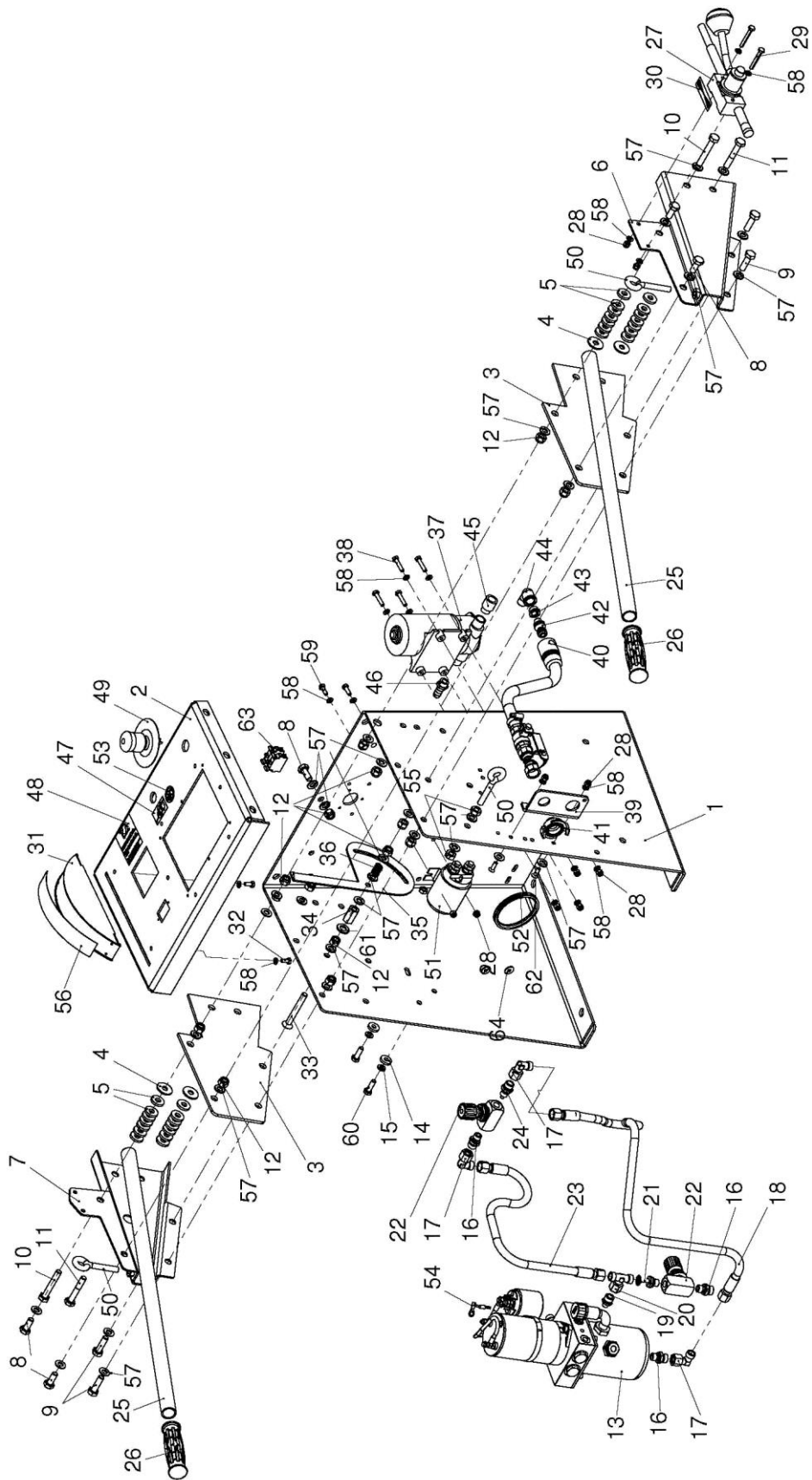


Pos.	Art.-Nr.	K.-ZN.-Nr	Qty.	Norm / Info	Inhalt	Bezeichnung	Description	Désignation
-	0282 040 9000	5008287	1		Pos. 1-64	Bedienpult kpl.	Control panel complete	Panneau complète

Pos.	Art.-Nr.	K.-ZN.-Nr	Qty.	Norm	Bezeichnung	Description	Désignation
1	0282 250 0750	0003641	1		Bedienpult	Control panel	Panneau
2	0282 250 0819	2003911	1		Bedienblech	Control panel	Tableau de commande
3	0282 040 9017	5008237	2		Flansch Halter Griffrohr	Flange holder	Flansch Halter Griffrohr
4	-	5001284	4	A 10,5 ISO 7093	Scheibe	Washer	Rondelle
5	-	5001105	28	A 10,5 DIN 7349	Scheibe	Washer	Rondelle
6	0282 250 0771	2003952	1		Halter Griffrohr rechts	Holding device right	Logement droite
7	0282 250 0772	2003953	1		Halter Griffrohr links	Holding device left	Logement gauche
8	-	5001334	5	M10x25 ISO 4017	Schraube	Screw	Vis
9	-	5000734	4	M10x35 ISO 4017	Schraube	Screw	Vis
10	-	5000702	2	M10x65 ISO 4017	Schraube	Screw	Vis
11	-	50004664	2	M10x60 ISO 4014	Schraube	Screw	Vis
12	-	5000857	14	M 10 ISO 7040	Mutter	Nut	Écrou
13	0282 250 0021	5001336	1	12V	Hydraulikaggregat	Hydraulic power unit	Centrale hydraulique
14	-	5001104	2	8,4 DIN 7349	Scheibe	Washer	Rondelle
15	-	5000361	2	A 8 DIN 127	Federring	Spring washer	Rondelle-ressort
16	0291 1010	5000824	3	1/4" XGE 10L	Nippel	Fitting	Nipple
17	0282 450 0513	5000844	3	XEVW 10LV	Winkel	Elbow	Raccord courbé
18	0291 099	5005680	1	DN08 x 800 DKOL	Schlauch	Hose	Tuyau
19	0291 1018	5002107	1	1/8" GE 10L	Nippel	Fitting	Nipple
20	0291 1041	5002108	1	XEVT 10LV	T-Stück	T-piece	Pièce en T
21	0291 1030	5004604	1	1/4" XGE 10L	Nippel	Fitting	Nipple
22	0282 450 0186	5004606	2	DRV-08-04.1	Drossel	Drossel	Throttling
22.1	0282 250 0080		2	19 DIN EN ISO 7089	Scheibe	Washer	Rondelle
22.2	0282 250 0081		2	PG18	Mutter	Nut	Écrou
23	0291 089	5005676	1	DN08 x 500 DKOL	Schlauch	Hose	Tuyau
24	0282 250 0555	5004603	1	1/4" XGE 10L	Drossel	Drossel	Throttling
25	0282 250 0760	5001370	2		Griffstange	Handlebar	Manche
26	0285 300 0044	5001372	2	852-10.4KSZ	Kunststoffgriff	Handle	Manche d'outil
27	0282 250 0701	5004584	1		Regulierhebel Vorschub	Standard lever	Levier régulateur
28	-	5000855	10	M 6 ISO 7040	Mutter	Nut	Écrou
29	-	5000717	2	M6x45 ISO 4017	Schraube	Screw	Vis
30	0295 899 0286	5004585	1	Vorschub	Aufkleber	Sticker	Autocollant
31	0282 250 0559	3003395	1		Skalenträger	Skalenträger	Scale acceptance

FS 40 E

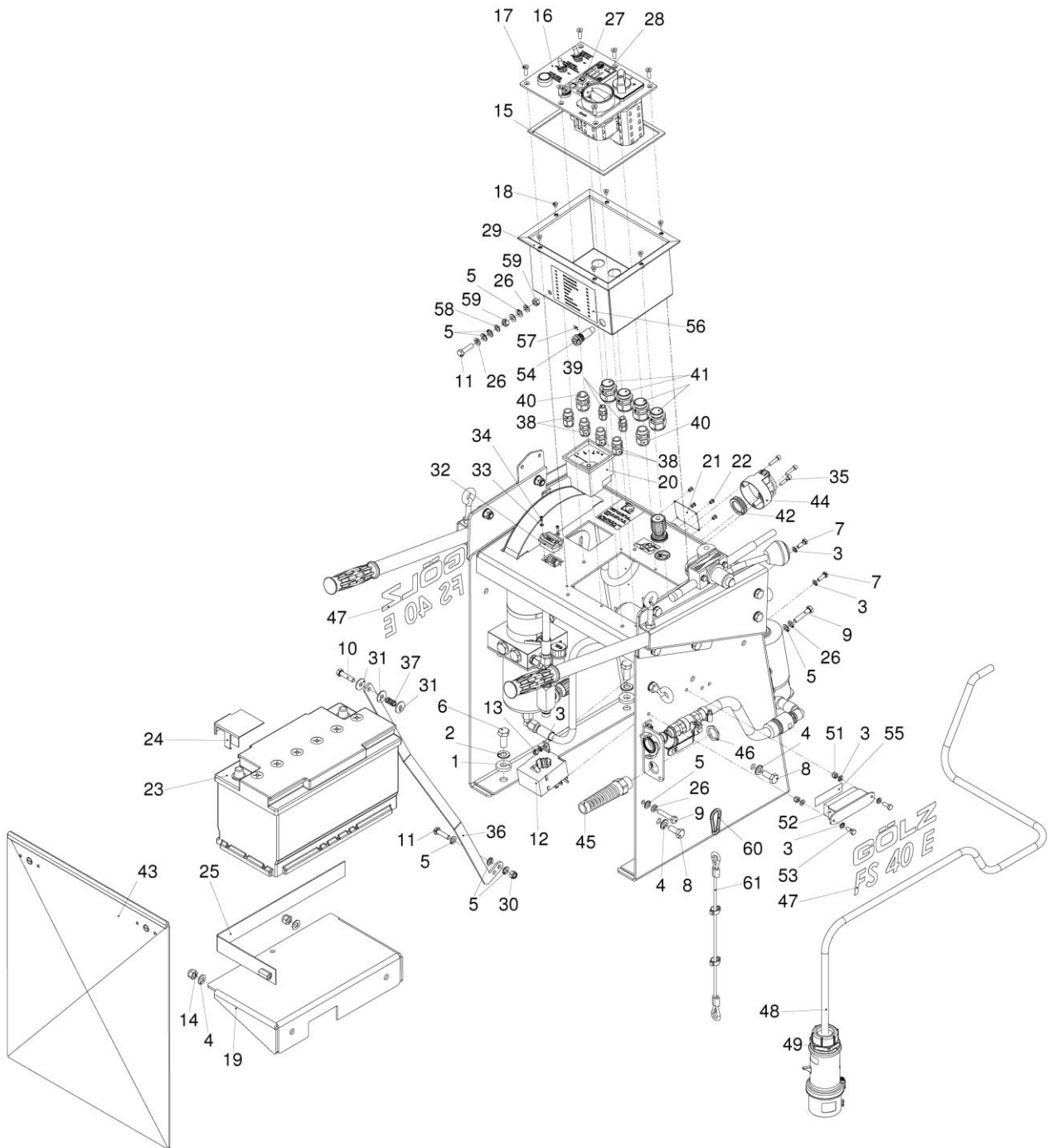
Translation of the original operating instruction and spare parts list



Pos.	Art.-Nr.	K.-ZN.-Nr	Qty.	Norm	Bezeichnung	Description	Désignation
32	-	5000709	2	M6x14 ISO 4017	Schraube	Screw	Vis
33	-	5000044	1	M10x80 ISO 10642	Schraube	Screw	Vis
34	0295 000 5050	5001009	1	M10 x 3D DIN 6334	Mutter	Nut	Écrou
35	0282 250 0754	3003658	1		Tiefenanzeiger	Depth indicator	Indicateur de profondeur
36	0282 250 0786	5004578	1	14,5x10,5x22	Druckfeder	Pressure spring	Ressort de pression
37	0282 200 0505	5001337	1		Wasserpumpe	Water pump	Pompe à eau
38	-	5000714	4	M6x30 ISO 4017	Schraube	Screw	Vis
39	0282 252 0185	5001870	1		Aufnahmewinkel Wasser - Strom	Aufnahmewinkel	Elbow acceptance
40	0282 301 0191	0005087	1		Wasseran-schluss kpl.	Wasseranschluss kpl.	Supply of water assy.
41	0282 250 0549	5001341	1	R1/2" A	GEKA-Kupplung	GEKA Coupler	GEKA Accouplement
42	0295 000 3016	5001368	1	1/4"	Anschlussstück	Connection	Connexion
43	0295 000 0336	5001367	1	3/8" A-1/4" I	Reduzierung	Reduction	Réduction
44	0284 650 0077	5005584	1	3/8" A-I	Winkel	Elbow	Raccord courbé
45	0282 250 0266	5005585	1	3/8" x 20	Verlängerung	Extension	Prolongement
46	BD501030	5008586	1	3/8"x13D	Schlauchtülle	Hose nozzle	Schlauchtülle
47	0295 899 0272	5004614	1	Heben-Senken	Aufkleber	Sticker	Autocollant
48	0295 899 0273	5002528	1	Umplatzieren verboten	Aufkleber	Sticker	Autocollant
49	0282 252 0259	5000177	1		Not-Halt Pilztaster	Emergency stop button	Bouton d'arrêt d'urgence
50	0295 600 1071	5001315	3	M10x50	Eisengewinde-öse	Eye bolt	Œillet de suspension
51	0282 250 0699	5008275	1	12V 300A	Magnetschalter	Magnetic switch	Commutateur magnétique
52	0298 100 0117	5005635	1		Kantenschutz	Edge protection	Protège-arête
53	0295 899 0345	5006301	1	Wasserspritzen verboten	Aufkleber	Sticker	Autocollant
54	0282 250 0705	4003522	1		Kabel Konf.	Cable	Câble
55		5000792	2	M 10 ISO 4032	Mutter	Nut	Écrou
56		6001092	1	rund	Skala	Scale	Échelle
57	-	5000342	33	B 10,5 ISO 7090	Scheibe	Washer	Rondelle
58	-	5000340	18	B 6,4 ISO 7090	Scheibe	Washer	Rondelle
59	-	5000711	2	M6x18 ISO 4017	Schraube	Screw	Vis
60	-	5000722	2	M8x25 ISO 4017	Schraube	Screw	Vis
61	-	5000343	1	B 13 ISO 7090	Scheibe	Washer	Rondelle
62	-	5004922	2	M 6x 20 ISO 10642	Schraube	Screw	Vis
63	0282 252 0261	5001611	2		Öffnerkontakt	Break contact	Contact à ouverture
64	-	5001282	2	A 6,4 ISO 7093	Scheibe	Washer	Rondelle
-	0298 000 1014		1	1l	Hydrauliköl	Hydraulic fluid	Huile

FS 40 E

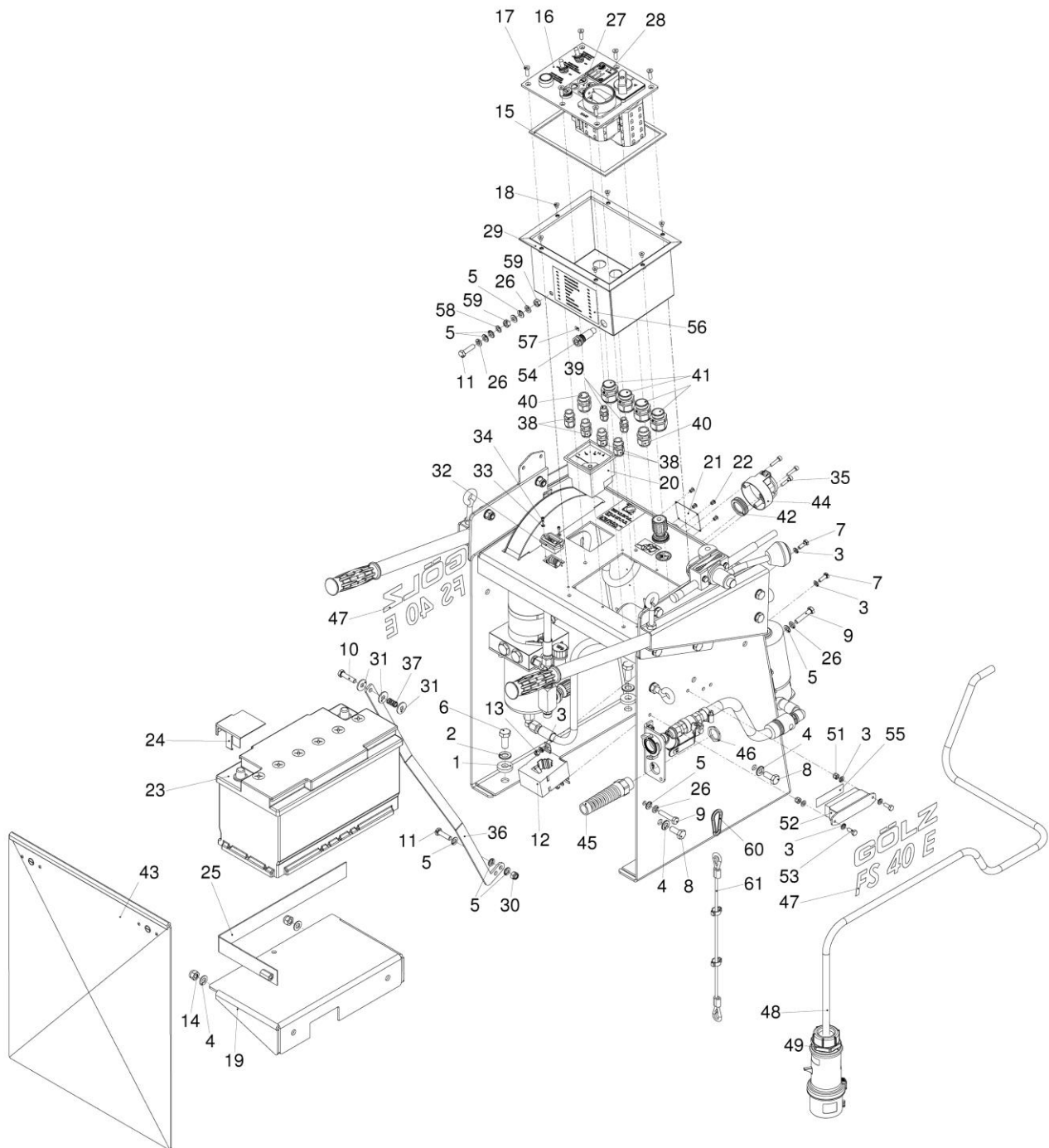
Translation of the original operating instruction and spare parts list



Pos.	Art.-Nr.	K.-ZN.-Nr	Qty.	Norm	Bezeichnung	Description	Désignation
1	-	5001106	4	A 13 DIN 7349	Scheibe	Washer	Rondelle
2	-	5000343	4	B 13 ISO 7090	Scheibe	Washer	Rondelle
3	-	5000340	8	B 6,4 ISO 7090	Scheibe	Washer	Rondelle
4	-	5000342	8	B 10,5 ISO 7090	Scheibe	Washer	Rondelle
5	-	5000341	5	B 8,4 ISO 7090	Scheibe	Washer	Rondelle
6	-	5000747	4	M12x30 ISO 4017	Schraube	Screw	Vis
7	-	5000711	2	M6x18 ISO 4017	Schraube	Screw	Vis
8	-	5001334	6	M10x25 ISO 4017	Schraube	Screw	Vis
9	-	5000726	2	M8x40 ISO 4017	Schraube	Screw	Vis
10	-	5000725	1	M8x35 ISO 4017	Schraube	Screw	Vis
11	-	5000724	2	M8x30 ISO 4017	Schraube	Screw	Vis
12	0282 301 0114	5005801	1		Stromwandler	Transformer	Transformateur de courant
13	-	5000790	2	M 6 ISO 4032	Mutter	Nut	Écrou
14	-	5000857	2	M 10 ISO 7040	Mutter	Nut	Écrou
15	0282 301 0108	5005707	1	8 x 3 x 760	Moosgummi	Sponge rubber	Caoutchouc cellulaire
16	0282 040 9041	5008475	1		Bedienpanel	Control panel	Tableau de commande
17	-	5004922	6	M 6x20 ISO 10642	Schraube	Screw	Vis
18	-	5000016	6	M 5x8 ISO 10642	Schraube	Screw	Vis
19	0282 251 0009	3003071	1		Aufnahme Batterie	Accumulator acceptance	Logement
20	0282 301 0113	5004829	1	50 / 5A	Amperemeter	Ampere meter	Ampèremètre
21	0295 899 0051	5006065	1	63 x 47 x 0,5	Typenschild	Type plate	Plaque d'identification
22	-	5001987	4	Ø 3 x 8 DIN 7337	Blindniet	Blind rivet	Rivet aveugle
23	0282 250 0165	5001335	1	12V 88AH	Batterie	Accumulator	Batterie d'accumulateur
24	0282 250 0857	5004292	1		Abdeckung Pluspol	Covering plate	Plaque de protection
25	0282 040 9079	5008539	1		Haltewinkel Batterie	Fixing bracket	Fixing bracket
26	-	5000361	4	A 8 DIN 127	Federring	Spring washer	Rondelle-ressort
27	0295 899 0033	5000217	1	Sicherheits- piktogramm	Aufkleber	Sticker	Autocollant
28	0295 899 0228	5003531	1	LWA 111 dB	Aufkleber	Sticker	Autocollant
29	-	6001439	1		Abdeckung Ar- matureneinheit	Covering plate	Plaque de recouvrement
30	-	5000856	1	M 8 ISO 7040	Mutter	Nut	Écrou
31	-	5001256	3	A 8,4 ISO 7093	Scheibe	Washer	Rondelle
32	0283 300 0774	5003678	1	24V	Betriebsstundenzähler	Elapsed-time counter	Compteur horaire
33	-	5000356	2	A 3,2 ISO 7089	Scheibe	Washer	Rondelle

FS 40 E

Translation of the original operating instruction and spare parts list



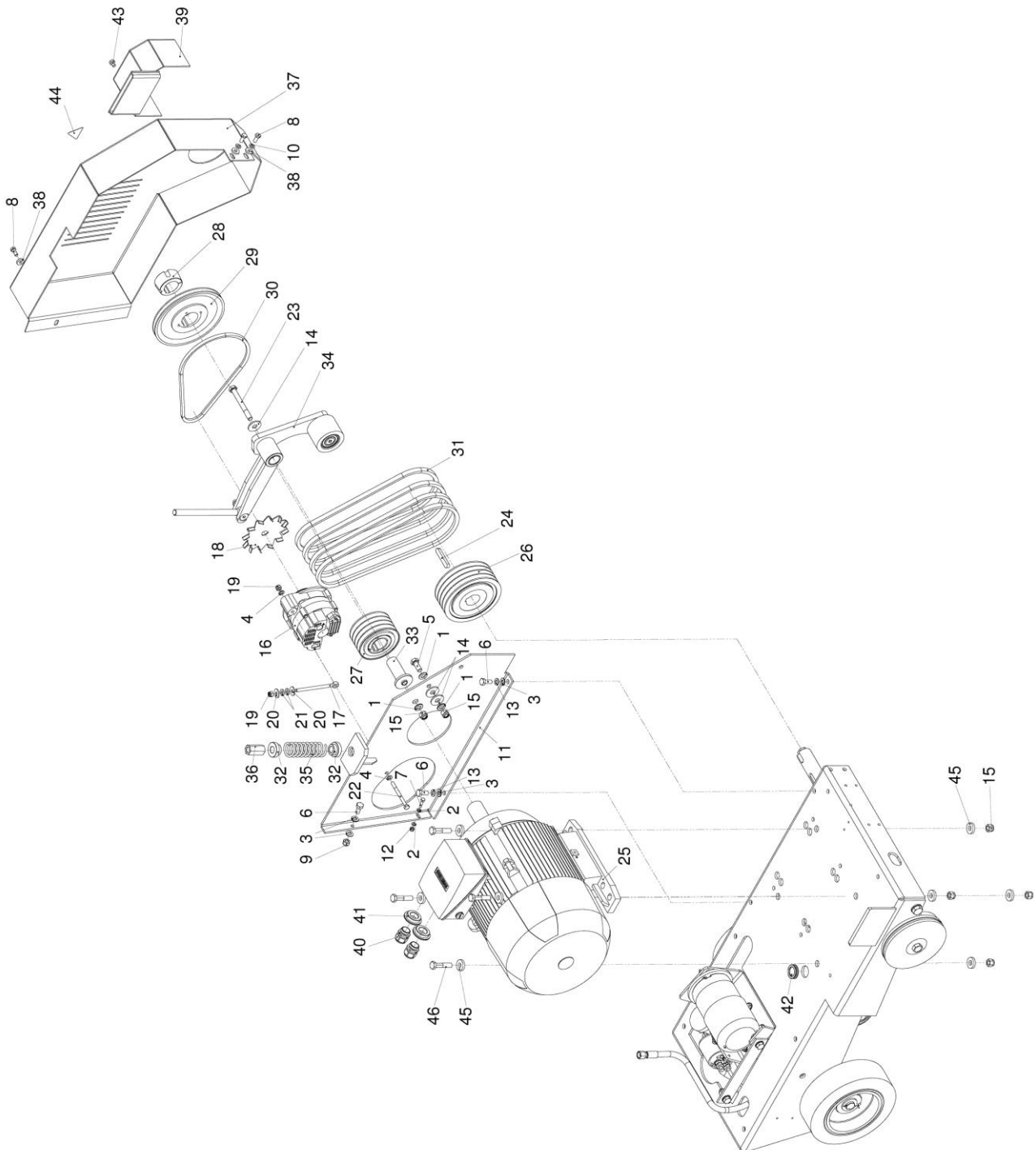
Pos.	Art.-Nr.	K.-ZN.-Nr	Qty.	Norm	Info	Bezeichnung	Description	Désignation
34	-	5000264	2	M3x10 ISO 4762		Schraube	Screw	Vis
35	-	5000528	3	M5x22 ISO 4762		Schraube	Screw	Vis
36	0282 251 0005	3003660	1			Anzeigege- stänge	Rod	Tiges
37	0282 250 0787	5004293	1	11,25 x 8,75 x 20		Druckfeder	Pressure spring	Ressort
38	0298 100 0012	5001300	4	M 16 x 1,5		Kabelver- schraubung	Cable connection	Branchement
39	0282 252 0162	5003381	2	M 12 x 1,5		Kabelver- schraubung	Cable connection	Branchement
40	0298 100 0016	5000822	2	M 20 x 1,5		Kabelver- schraubung	Cable connection	Branchement
41	0282 252 0341	5006705	4	M 25 x 1,5		Kabelver- schraubung	Cable connection	Branchement
42	0282 250 0856	5004289	1			Durchführungs- tülle	Wire protecting sleeve	Durchführungs- tülle
43	0282 250 0732	0005088	1			Rückwand kpl.	Rear panel complete	Panneau arrière complète
44	0282 040 9003	5008531	1	3-polig		Steckdose	Plug socket	Prise femelle
45	0283 400 0040	5000244	1	M25x1,5		Biegeschutz	Protection covering of cable	Enveloppe protectrice pour câble
46	0298 100 0029	5000090	1	M 25 x 1,5		Gegenmutter	Nut	Écrou
47	0295 899 0022	5008194	2		FS40E	Aufkleber	Sticker	Autocollant
48	0282 040 9031	5008778	1	4x4mm ²		Kabel	Cable	Câble
49	0282 040 9051	5008578	1	32A 5-polig 400V		Phasenwender	Phase changing switch	Phasenwender
50	0282 250 0112	5002110	1	Ø 16 - Ø 25		Schlauchschelle	Hose clamp	Collier de serrage
51	-	5000855	2	M 6 ISO 7040		Mutter	Nut	Écrou
52	0282 040 9094	6001188	1			Flachsiche- rungsalter	Fuse holder	Porte-fusible
53	-	5000690	2	M6x16 ISO 4017		Schraube	Screw	Vis
54	0282 040 9092	6001189	1			Sicherungshalter	Fuse holder	Porte-fusible
55	-	6001191	1	Absicherung		Aufkleber	Sticker	Autocollant
56	-	6001190	1	Absicherung Legende		Aufkleber	Sticker	Autocollant
57	-	6001192	1	F1		Aufkleber	Sticker	Autocollant
58	0282 250 0742	5001019	1	A 8,4 DIN 6797		Zahnscheibe	Toothed washer	Disque denté
59	-	5000791	2	M 8 ISO 4032		Mutter	Nut	Écrou
60	0282 040 9008	6001405	1			Karabinerhaken	Spring safety hook	Porte- mousqueton
61	-	6001438	1			Seil für Anschlußkabel	Rope	Prolonge

FS 40 E

Translation of the original operating instruction and spare parts list



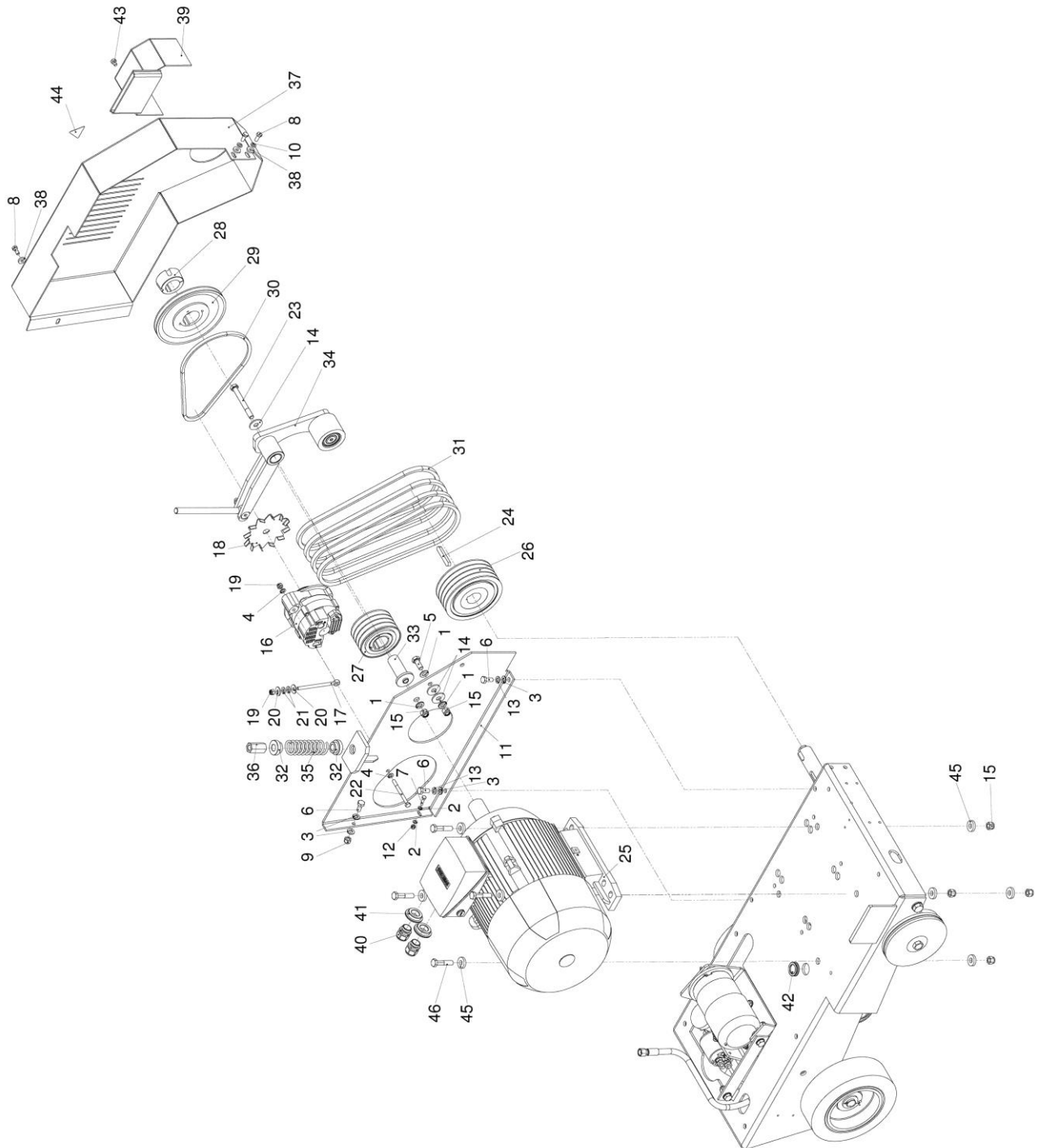
8.4 Motor



Pos.	Art.-Nr.	K.-ZN.-Nr	Qty.	Norm / Info	Bezeichnung	Description	Désignation
1	-	5000343	3	B 13 ISO 7090	Scheibe	Washer	Rondelle
2	-	5000340	2	B 6,4 ISO 7090	Scheibe	Washer	Rondelle
3	-	5000342	4	B 10,5 ISO 7090	Scheibe	Washer	Rondelle
4	-	5000341	2	B 8,4 ISO 7090	Scheibe	Washer	Rondelle
5	-	5000747	1	M12x30 ISO 4017	Schraube	Screw	Vis
6	-	5001334	3	M10x25 ISO 4017	Schraube	Screw	Vis
7	-	5000713	1	M6x25 ISO 4017	Schraube	Screw	Vis
8	-	5000721	3	M8x20 ISO 4017	Schraube	Screw	Vis
9	-	5000857	1	M 10 ISO 7040	Mutter	Nut	Écrou
10	-	5000361	2	A 8 DIN 127	Federring	Spring washer	Rondelle-ressort
11	0282 040 9023	5007562	1		Aufnahmeplatte Keil- riemenspanner	V-belt tensioning device acceptance	Fixation de dispositive tendeur
12	-	5000855	1	M 6 ISO 7040	Mutter	Nut	Écrou
13	-	5000362	2	A10 DIN 127	Federring	Spring washer	Rondelle-ressort
14	-	5001286	3	A 13 ISO 7093	Scheibe	Washer	Rondelle
15	-	5000858	6	M 12 ISO 7040	Mutter	Nut	Écrou
16	0282 250 0575	5005641	1	65A, 14V	Lichtmaschine	Dynamo	Dynamo
17	0282 250 0789	5000410	1	M 8 x 120 DIN 444-B	Augenschraube	Eye bolt	Ceillet de suspension
18	0282 520 0526	5005708	1	Linksdrehend	Lüfterflügel	Fan blade	Ailette ventilateur
19	-	5000856	2	M 8 ISO 7040	Mutter	Nut	Écrou
20	-	5001256	2	A 8,4 ISO 7093	Scheibe	Washer	Rondelle
21	0282 250 0076	0004629	2		Scheibe	Washer	Rondelle
22	-	5000656	1	M8x90 ISO 4014	Schraube	Screw	Vis
23	-	5000679	1	M12x110 ISO 4014	Schraube	Screw	Vis
24	-	5001161	1	A12x8x 70 DIN 6885	Passfeder	Key	Clavette
25	0282 301 0223	5008509	1	15,0 kW 1500 U/Min	E-Motor	Electric motor	Moteur électrique
26	0282 252 0100	5000223	1	Dw160 x 4 SPA TL2517	Keilriemenscheibe	V-belt pulley	Poulie à gorge pour courroie trapézoïdale
27	0282 252 0225	5001512	1	4SPA Dw112 Ø48	Keilriemenscheibe	V-belt pulley	Poulie à gorge pour courroie trapézoïdale
28	0282 170 0245	5007535	2	TL2012 Ø42	Taper Lock Buchse	Taper lock bushing	Taper Lock Buchse
29	0282 301 0064	5001323	1	1SPZ Dw200 d48	Keilriemenscheibe	V-belt pulley	Poulie à gorge pour courroie trapézoïdale
30	0282 250 0625	5008513	1	XPZ 862 Lw	Keilriemen	V-belts	Courroie trapézoïdale
31	0282 040 9061	5008514	4	XPA 982 Lw	Keilriemen	V-belts	Courroie trapézoïdale
32	0282 040 9088	5007556	2		Aufnahme Druckfeder	Holding fixture pressure spring	Aufnahme Druckfeder
33	0282 040 9089	5007550	1		Aufnahme KR- Spanner	Holding fixture v-belt tensioning device	Aufnahme KR- Spanner

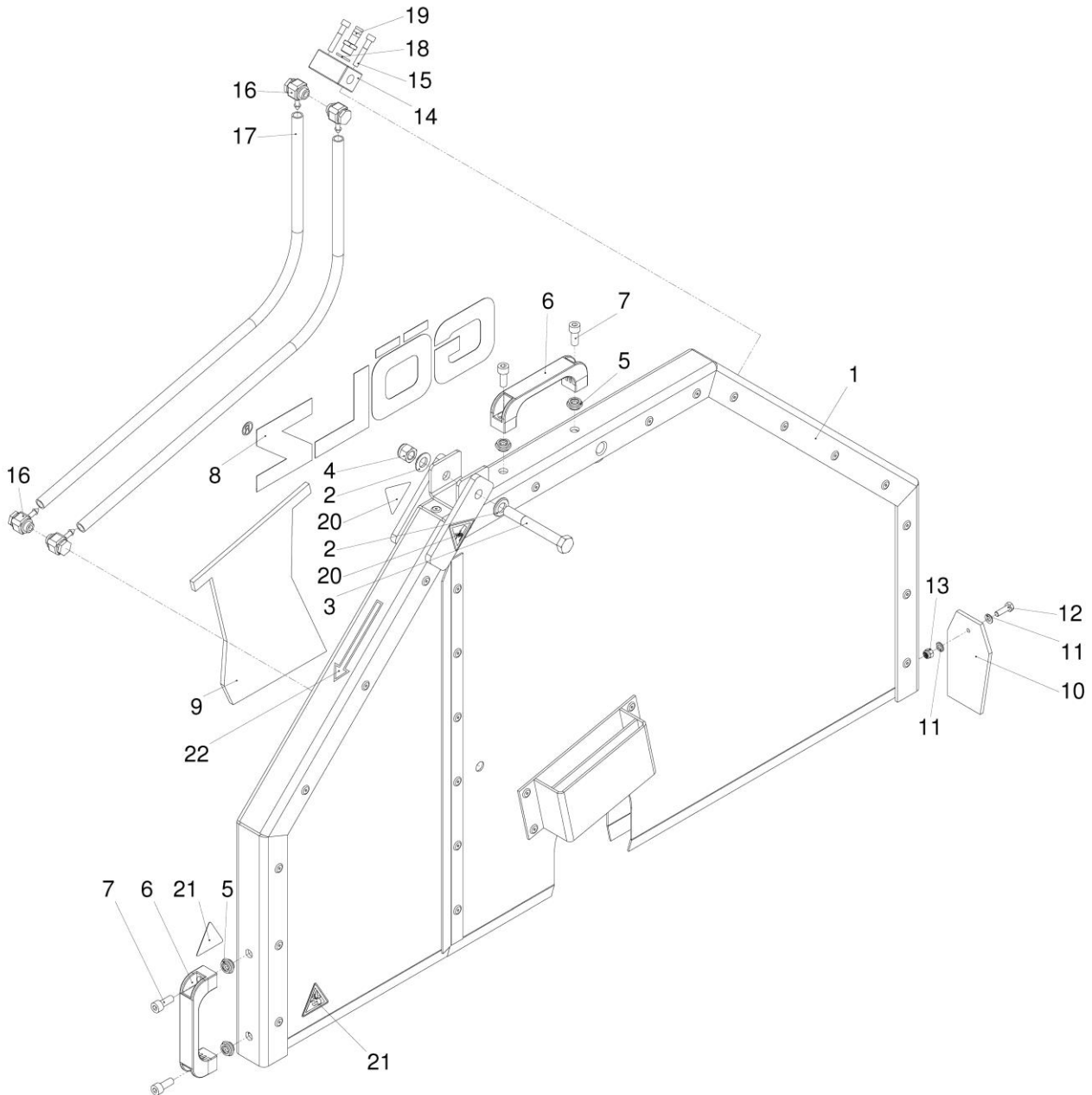
FS 40 E

Translation of the original operating instruction and spare parts list



Pos.	Art.-Nr.	K.-ZN.-Nr	Qty.	Norm	Bezeichnung	Description	Désignation
34	0282 040 9018	5007555	1		Keilriemen-spanner kpl.	V-belt tensioning device complete	Dispositif tendeur complet
35	0282 040 9027	5007569	1	DIN 2098 5x35x100	Feder KR-Spanner	Spring	Ressort
36	0282 252 0119	5001202	1	M 16 x 3D DIN 6334	Mutter	Nut	Écrou
37	0282 040 9022	5007568	1		Keilriemen-schutzhaube kpl.	V-belt guard complete	Capot de protection de courroie trapézoïdale complete
38	-	5001104	3	8,4 DIN 7349	Scheibe	Washer	Rondelle
39	0282 250 0868	0004570	1		Flansch-schutzhaube	Flange guard	Capot de protection pour flasque de fixation
40	0282 252 0341	5006705	2	M 25 x 1,5	Kabelver-schraubung	Cable connection	Branchement
41	0282 252 0282	5004890	2	M40x1,5 - M25x1,5	Reduzierung	Reduction	Réduction
42	0282 250 0856	5004289	1		Durchführungstülle	Wire protecting sleeve	Durchführungstülle
43	-		1	M8x12 ISO 4017	Schraube	Screw	Vis
44	0282 650 9004	5008768	1	Warnung vor Riementrieb	Aufkleber	Sticker	Autocollant
45	-	5001106	8	A 13 DIN 7349	Scheibe	Washer	Rondelle
46	-	5000675	4	M 12 x 55 ISO 4014	Schraube	Screw	Vis

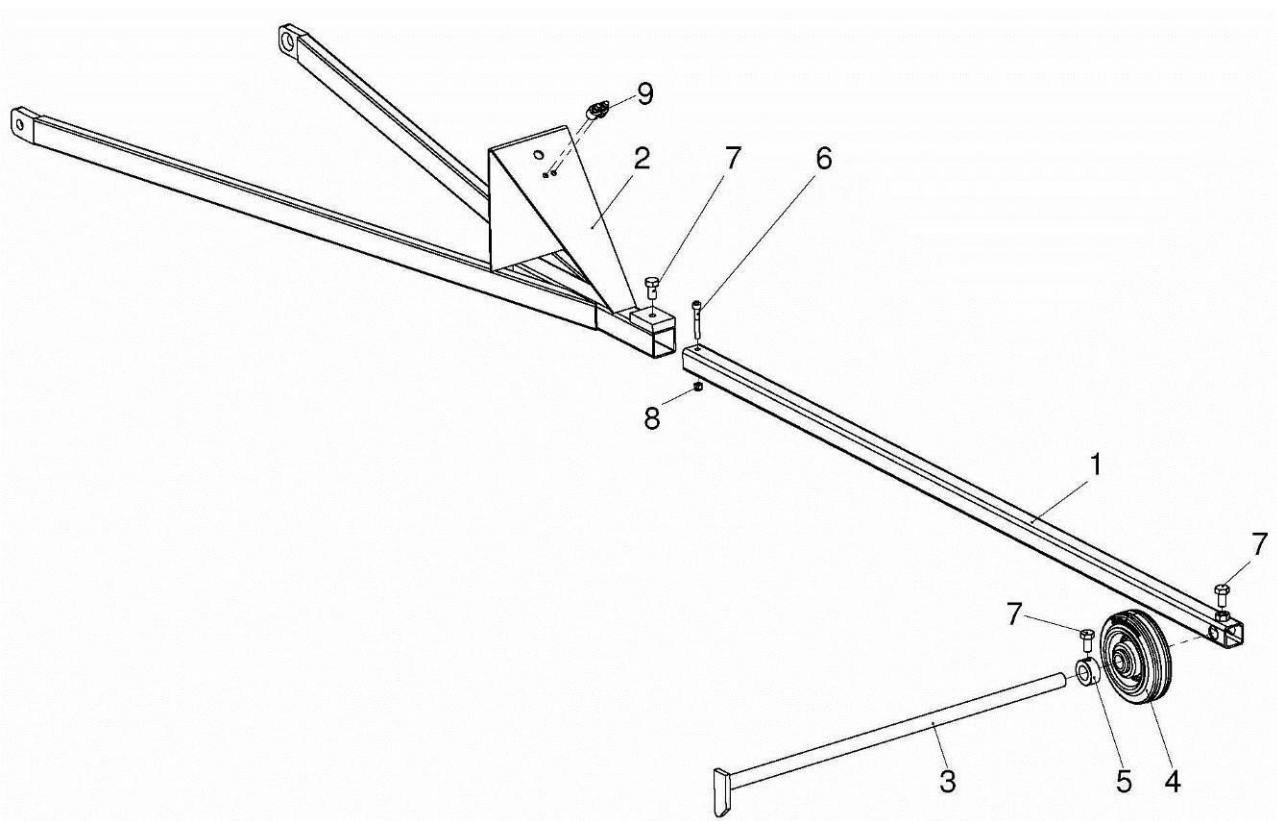
8.5 Blade guard



Pos.	Art.-Nr.	K.-ZN.-Nr	Qty.	Norm / Info	Inhalt	Bezeichnung	Description	Désignation
-	0282 040 9014	5008565	1		Pos. 1-22	Schutzhaube kpl.	Blade guard complete	Capot de protection complète

Pos.	Art.-Nr.	K.-ZN.-Nr	Qty.	Norm / Info	Bezeichnung	Description	Désignation
1	0282 040 9012	5008286	1		Schutzhaube	Schutzhaube	Blade guard
2	-	5000343	2	B 13 ISO 7090	Scheibe	Washer	Rondelle
3	-	5000678	1	M12x95 ISO 4014	Schraube	Screw	Vis
4	-	5000858	1	M 12 ISO 7040	Mutter	Nut	Écrou
5	0282 301 0219	5006508	4	M 8	Blindnietmutter	Blind rivet nut	Blindnietmutter
6	0282 250 0775	5000110	2		Griff	Bow-type handle	Poignée
7	-	5000565	4	M8x20 ISO 4762	Schraube	Screw	Vis
8	0295 899 0078	5008577	1		Aufkleber	Sticker	Autocollant
9	-	5008589	1		Spritzschutz	Splash guard	Protection contre le réfrigérant
10	-	5008879	1		Schutzhaube Spritzlappen	Splash guard	Protection contre le réfrigérant
11	-	5000340	2	B 6,4 ISO 7090	Scheibe	Washer	Rondelle
12	-	5000712	1	M6x20 ISO 4017	Schraube	Screw	Vis
13	-	5000855	1	M 6 ISO 7040	Mutter	Nut	Écrou
14	-	5008894	1	G1/4	Verteiler	Valve	Verteiler
15	-	5000556	2	M6x35 ISO 4762	Schraube	Screw	Vis
16	0282 040 9071	5008902	4	G1/4 6mm	L-Gewindetülle	Threaded nozzle	L-Gewindetülle
17	0298 100 0106	5008910	2	13,2x3,3x670	Schlauch	Hose	Tuyau
18	0295 000 0066	5000230	1	1/4"	Dichtung	Gasket	Joint
19	0295 000 0584	5000232	1	G1/4" Ø 9	Schlauchtülle	Nozzle	Embout à olive
20	0295 899 0346	5004666	2	Warnung Handverletzung	Aufkleber	Sticker	Autocollant
21	0295 899 0348	5006438	2	Warnung vor Schnittverletzung	Aufkleber	Sticker	Autocollant
22	0295 899 0009	5002527	1	Pfeil	Aufkleber	Sticker	Autocollant

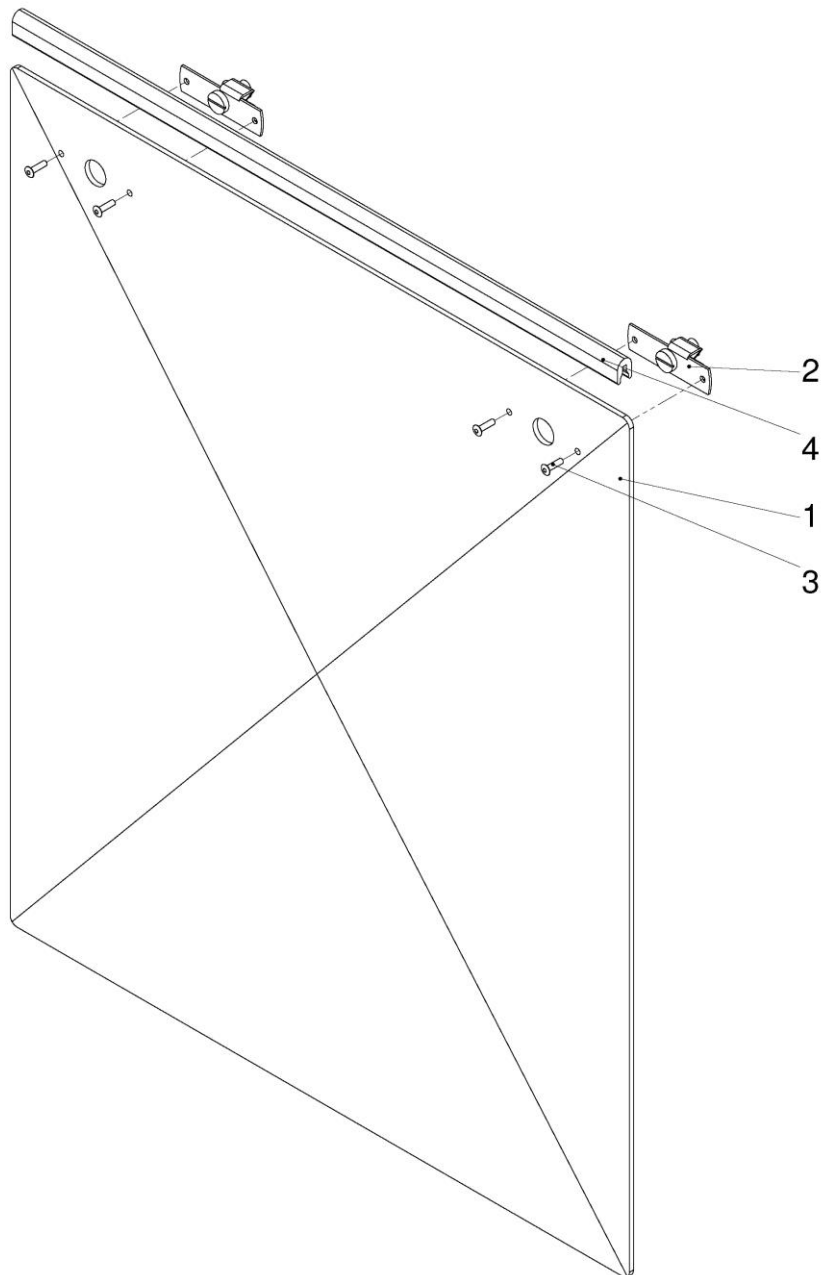
8.6 Pointer unit



Pos.	Art.-Nr.	K.-ZN.-Nr	Qty.	Norm / Info	Inhalt	Bezeichnung	Description	Désignation
-	0282 040 9025	5008269	1		Pos. 1-9	Richtungsan- zeiger kpl.	Pointer unit complete	Indicateur de direction complete

Pos.	Art.-Nr.	K.-ZN.-Nr	Qty.	Norm / Info	Bezeichnung	Description	Désignation
1	-	5008268	1		Teleskoprohr Richtungsanzeiger	Telescopic tube pointer unit	Tube télescopique
2	0282 040 9075	5008494	1		Aufnahme Richtungsanzeiger	Pointer unit acceptance	Logement d'indicateur de direction
3	-	5008496	1		Anzeiger	Pointer	Indicateur
4	0295 000 0218	5003960	1	Ø 100 x 45 x Ø 15	Rad	Wheel	Roue
5	0282 252 0112	5000907	1	A16 DIN 705	Stelling	Adjusting ring	Bague d'arrêt
6	-	5000529	1	M5x35 ISO 4762	Schraube	Screw	Vis
7	-	5000720	3	M8x16 ISO 4017	Schraube	Screw	Vis
8	-	5000854	1	M 5 ISO 7040	Mutter	Nut	Ecrou
9	0282 040 9006	6001406	1	5mm	Drahtseilklemme	Wire rope clamp	Serre câbles

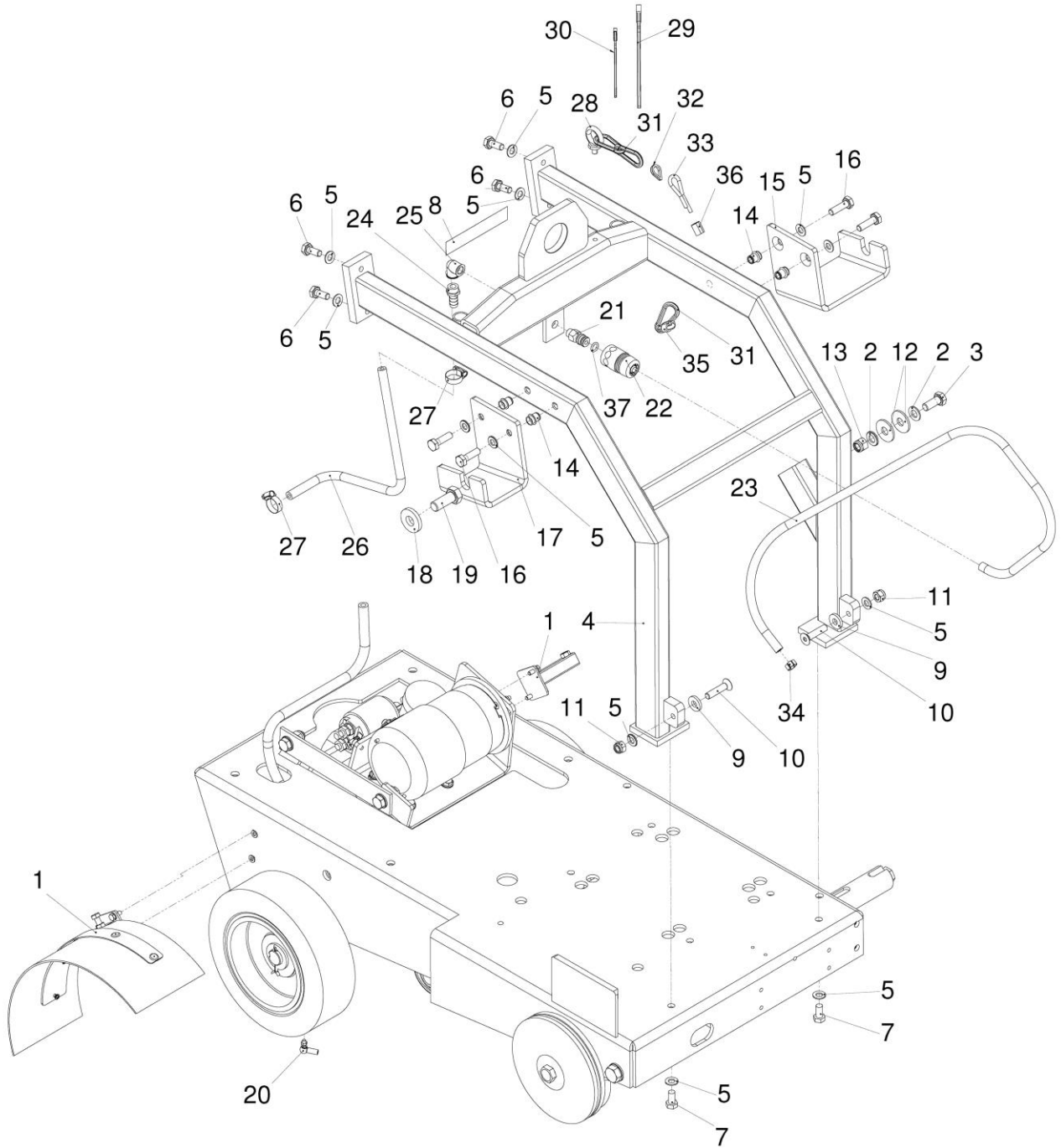
8.7 Rear panel



Pos.	Art.-Nr.	K.-ZN.-Nr	Qty.	Norm / Info	Inhalt	Bezeichnung	Description	Désignation
-	0282 250 0732	0005088	1		Pos.1-4	Rückwand kpl.	Rear panel complete	Panneau arrière complète

Pos.	Art.-Nr.	K.-ZN.-Nr	Qty.	Norm / Info	Bezeichnung	Description	Désignation
1	0282 250 0537	2003329	1		Rückwand	Rear panel	Panneau arrière
2	0282 250 0538	5000249	2		Vorreibverschluss	Lock	Fermeture
3	0298 100 0024	5001375	4	Ø 3 x 12	Blindniet	Blind rivet	Rivet aveugle
4	0298 100 0117	5006754	1	1-4mm	Kantenschutz	Edge protection	Protège-arête

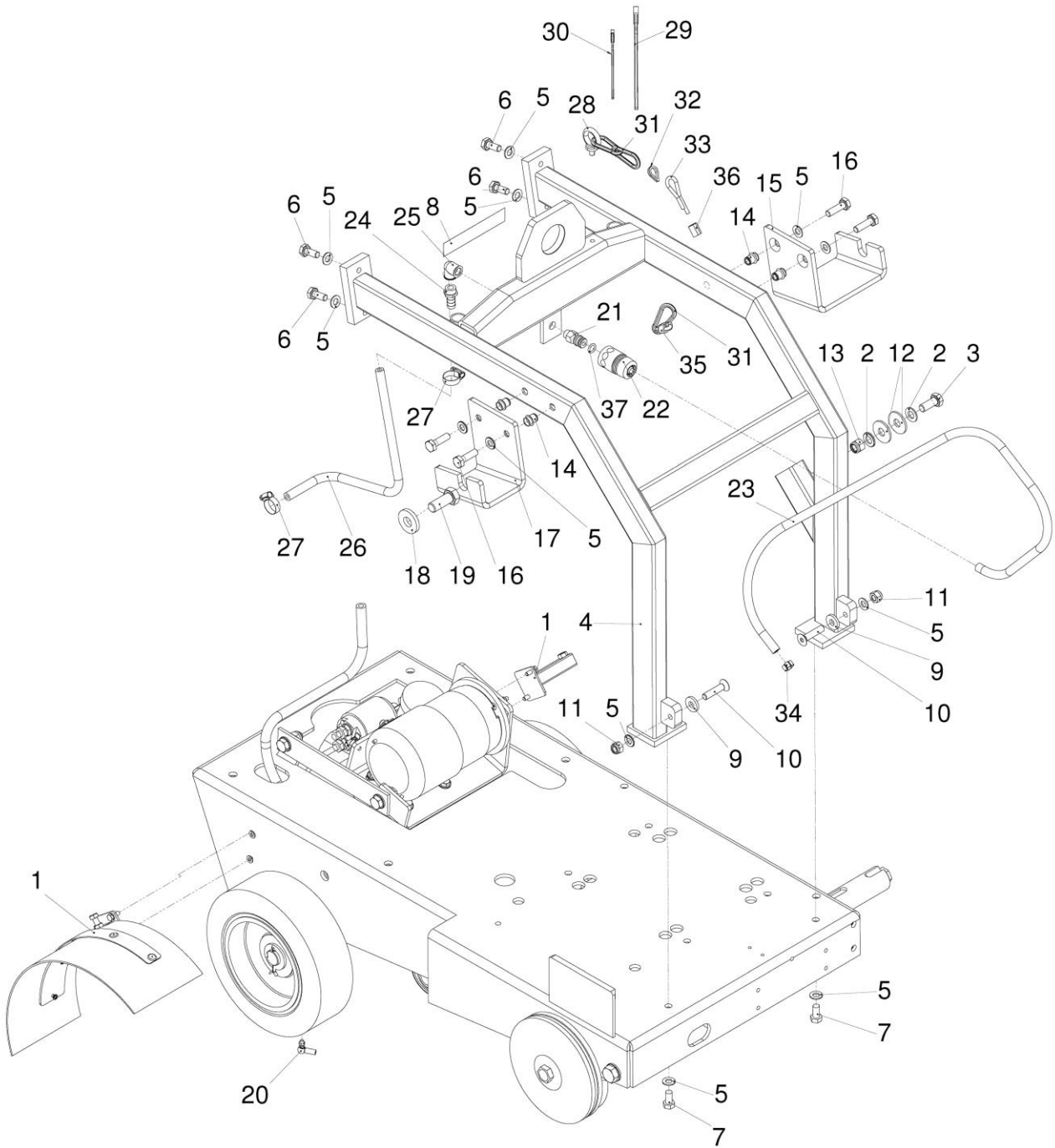
8.8 Protection frame



Pos.	Art.-Nr.	K.-ZN.-Nr	Qty.	Norm	Info	Bezeichnung	Description	Désignation
1	0282 040 9080	5008876	1			Spritzschutz Hinterrad	Splash guard	Protection contre le réfrigérant
2	-	5000343	2	B 13 ISO 7090		Scheibe	Washer	Rondelle
3	-	5000747	1	M12x30 ISO 4017		Schraube	Screw	Vis
4	0282 040 9020	5008276	1			Schutzbügel kpl.	Safety bar complete	Schutzbügel kpl.
5	-	5000342	12	B 10,5 ISO 7090		Scheibe	Washer	Rondelle
6	-	5001334	4	M10x25 ISO 4017		Schraube	Screw	Vis
7	-	5000731	2	M10x20 ISO 4017		Schraube	Screw	Vis
8	0295 899 0280	5001581	1		Achtung Wasserpumpe	Aufkleber	Sticker	Autocollant
9	-	5001105	2	A 10,5 DIN 7349		Scheibe	Washer	Rondelle
10	-	5000038	2	M10x45 ISO 10642		Schraube	Screw	Vis
11	-	5000857	2	M 10 ISO 7040		Mutter	Nut	Ecrou
12	-	5001286	2	A 13 ISO 7093		Scheibe	Washer	Rondelle
13	-	5000858	1	M 12 ISO 7040		Mutter	Nut	Ecrou
14	-	5008552	4	M10x1.5 2,5-5,5		Nietmutter	Rivet nut	Nietmutter
15	0282 040 9016	5008245	1			Aufnahme Blattschutz links	Holding fixture blade guard left	Aufnahme Blattschutz links
16		5000734	4	M10x35 ISO 4017		Schraube	Screw	Vis
17	0282 040 9015	5008246	1			Aufnahme Blattschutz rechts	Holding fixture blade guard right	Aufnahme Blattschutz rechts
18	-	5001107	1	A 17 DIN 7349		Scheibe	Washer	Rondelle
19	-	5000762	1	M16x40 ISO 4017		Schraube	Screw	Vis
20	0282 250 0582	5000379	1	M 5		Winkelgelenk	Ball and socket joint	Joint à rotule
21	B800020	5008580	1	1/2"		Stecknippel	Plug connection	Raccord mâle
22	0295 000 3011	5001369	1	1/2"		Schlauchkupplung	Water coupler	Coupler d'eau
23	0298 100 0106	5008581	1	Ø13,2x3,3		Schlauch	Hose	Tuyau
24	BD501030	5008586	1	3/8"x13D		Schlauchtülle	Nozzle	Embout à olive
25	0288 900 1183	5000096	1	G1/4" I-I 90°		Winkel	Elbow	Raccord courbé
26	0298 100 0106	5008587	1	Ø13,2x3,3		Schlauch	Hose	Tuyau
27	0282 250 0112	5002110	2	Ø 16 - Ø 25		Schlauchschelle	Hose clamp	Bride
28	0266 420 6013	5001872	1			Ringschraube	Ring bolt	Vis à anneau de levage
29	0295 000 2043	6001404	1	SW24 DIN 894		Maulschlüssel	Wrench	Clé
30	0295 000 2036	5005644	1	SW13 DIN 894		Maulschlüssel	Wrench	Clé
31	0282 040 9008	6001405	3			Karabinerhaken	Spring safety hook	Porte-mousqueton
32	0282 040 9007	6001407	1			Drahtseilkausche	Wire cable eye stiffener	Cosses petite ouverture
33	0282 040 9005	6001408	1	5mm		Drahtseil	Wire rope	Câble métallique

FS 40 E

Translation of the original operating instruction and spare parts list



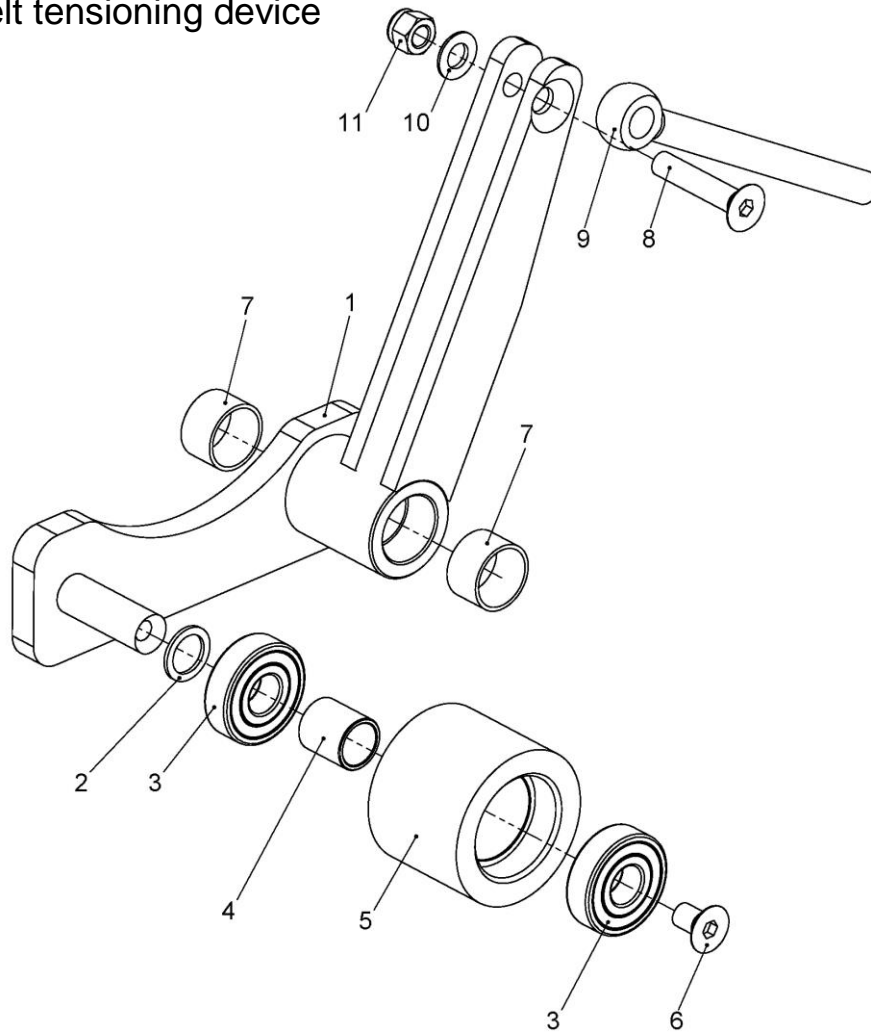
FS 40 E

Translation of the original operating instruction and spare parts list



Pos.	Art.-Nr.	K.-ZN.-Nr	Qty.	Norm	Info	Bezeichnung	Description	Désignation
34	0282 040 9006	6001406	1	5mm		Drahtseilklemme	Wire rope clamp	Serre câbles
35	0295 000 0581	5000239	1	15 - 17		2 - Ohr - Schelle	2-ear Hose Clamp	Collier de serrage à 2 oreilles
36	0282 040 9009	6001436	1	5mm		Pressklemme	Rope clip	Manchon
37	0267 113 0032	6001437	1	11x2,5		O-Ring	O-ring	Joint torique

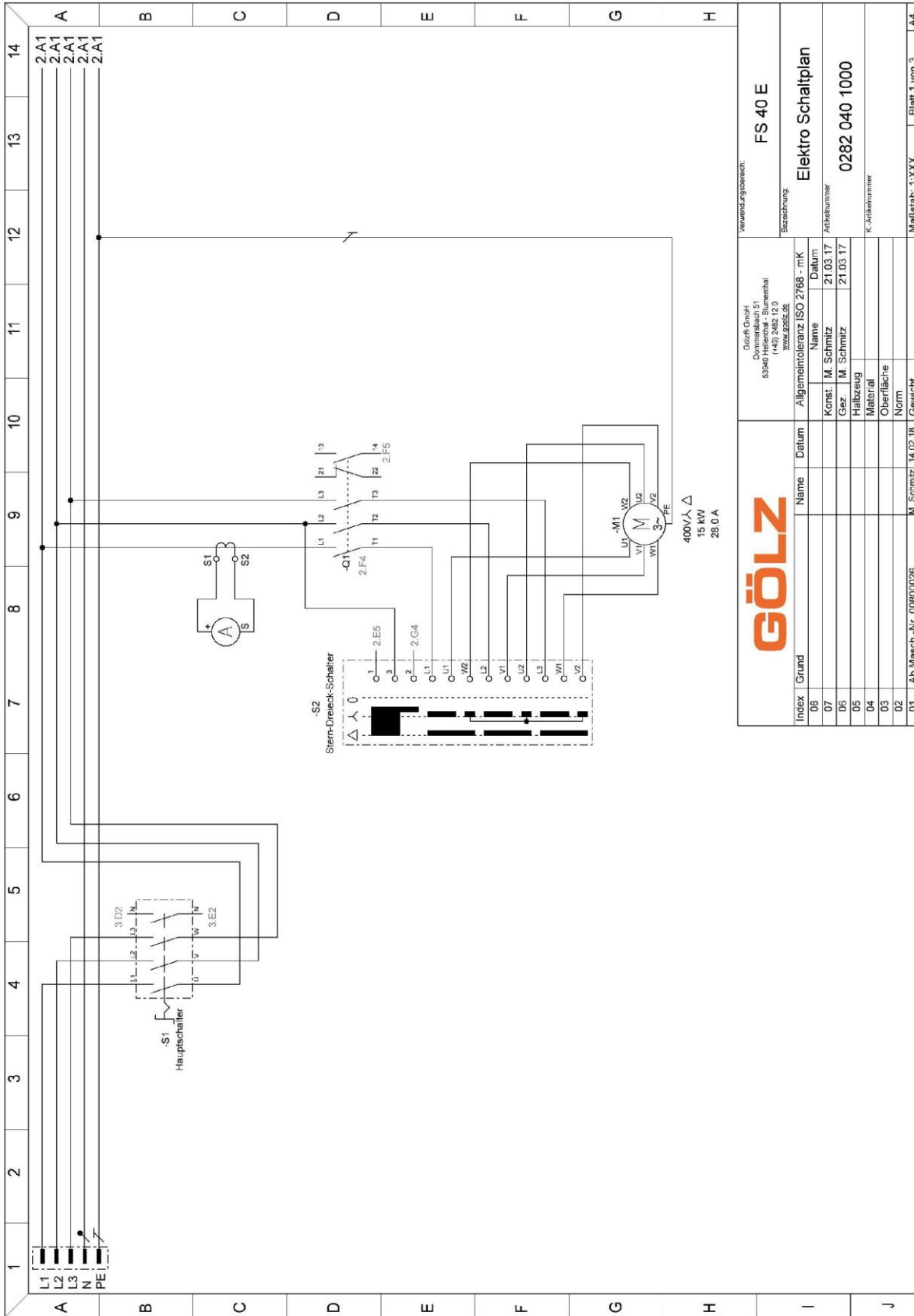
8.9 V-belt tensioning device



Pos.	Art.-Nr.	K.-ZN.-Nr	Qty.	Norm / Info	Inhalt	Bezeichnung	Description	Désignation
-	0282 040 9018	5007555	1		Pos.1-11	Keilriemen-spanner kpl.	V-belt tensioning device complete	Dispositif tendeur complet

Pos.	Art.-Nr.	K.-ZN.-Nr	Qty.	Norm / Info	Bezeichnung	Description	Désignation
1	-	5008506	1		Keilriemen-spanner	V-belt tensioning device	Dispositif tendeur
2	0282 190 0326	5001949	1	Ø 20 x Ø 28 x 2	Scheibe	Washer	Rondelle
3	0282 250 0096	5000501	2	6304-2RS	Lager	Ball bearing	Roulement à billes
4	-	5007553	1		Buchse	Bushing	Douille
5	-	5007551	1		Rolle KR-Spanner	V-belt tensioning device roller	Poulie fixation de dispositif tendeur
6	-	5000045	1	M12x20 ISO 10642	Schraube	Screw	Vis
7	0282 301 0085	5005853	2	Ø34xØ30x20	DU-Buchse	Bushing	Douille
8	-	5008742	1	M12x60 ISO 10642	Schraube	Screw	Vis
9	0282 040 9026	5008515	1	M16x180	Augenschraube	Eye bolt	Œillet de suspension
10	-	5000343	1	B 13 ISO 7090	Scheibe	Washer	Rondelle
11	0285 300 0015	5000858	1	M 12 ISO 7040	Mutter	Nut	Écrou

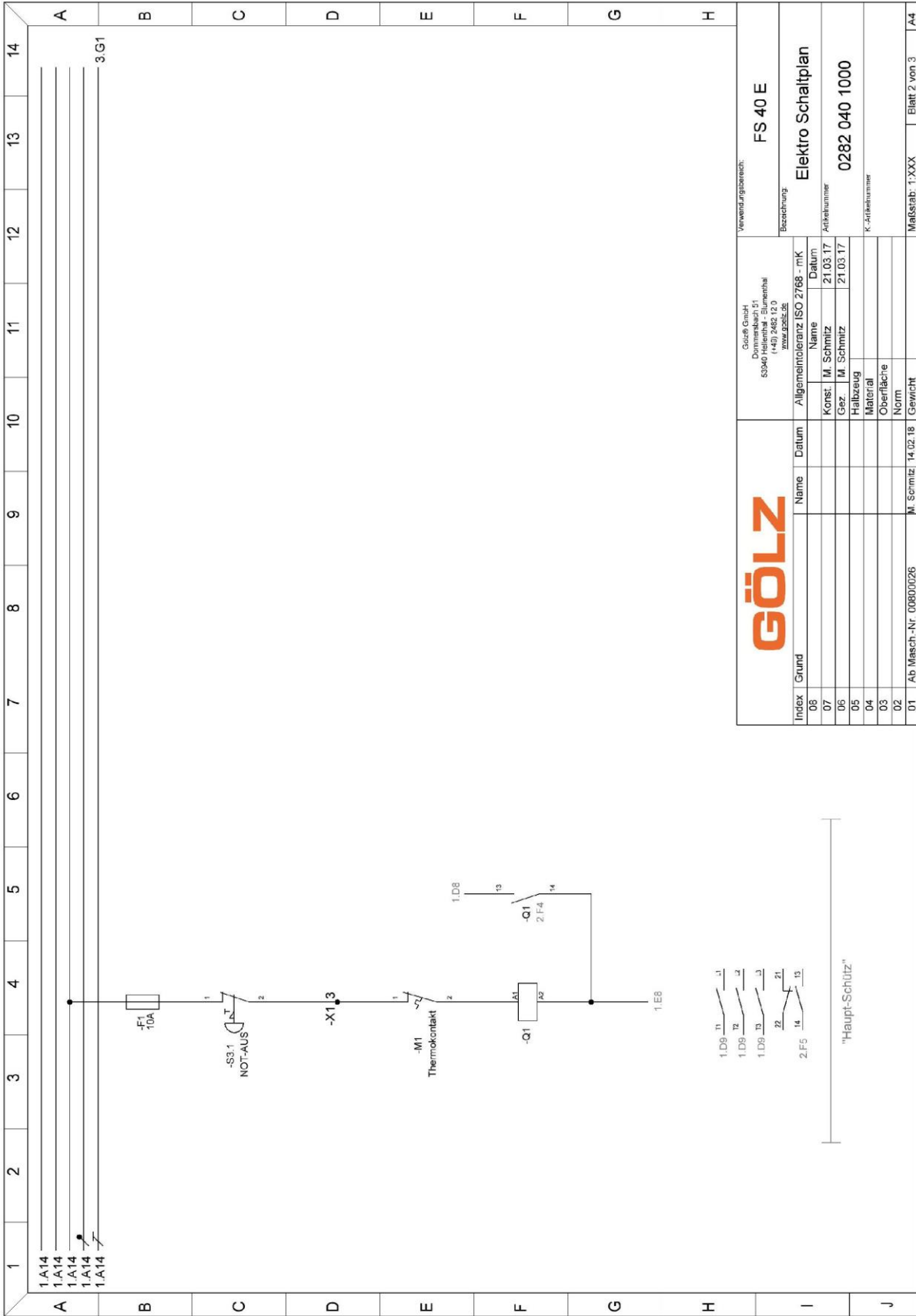
9. Wiring diagram



Index		Grund	Name	Datum
03				
07		Konst. M. Schmitz	21.03.17	Datum
05		Gez. M. Schmitz	21.03.17	Arbeitsnummer
04		Halbleitung		K. Artikelnummer
03		Material		
02		Norm		
01		Ab. Masch.-Nr. 00800026	M. Schmitz	14.02.18
				Gewicht
				Blatt 1 von 3
				A4

Verwendungsbezeichnung:		FS 40 E
Beschreibung:		Elektro Schaltplan
Arbeitsnummer:		0282 040 1000
K. Artikelnummer:		
Maßstab:		1:XXX
Blatt:		Blatt 1 von 3

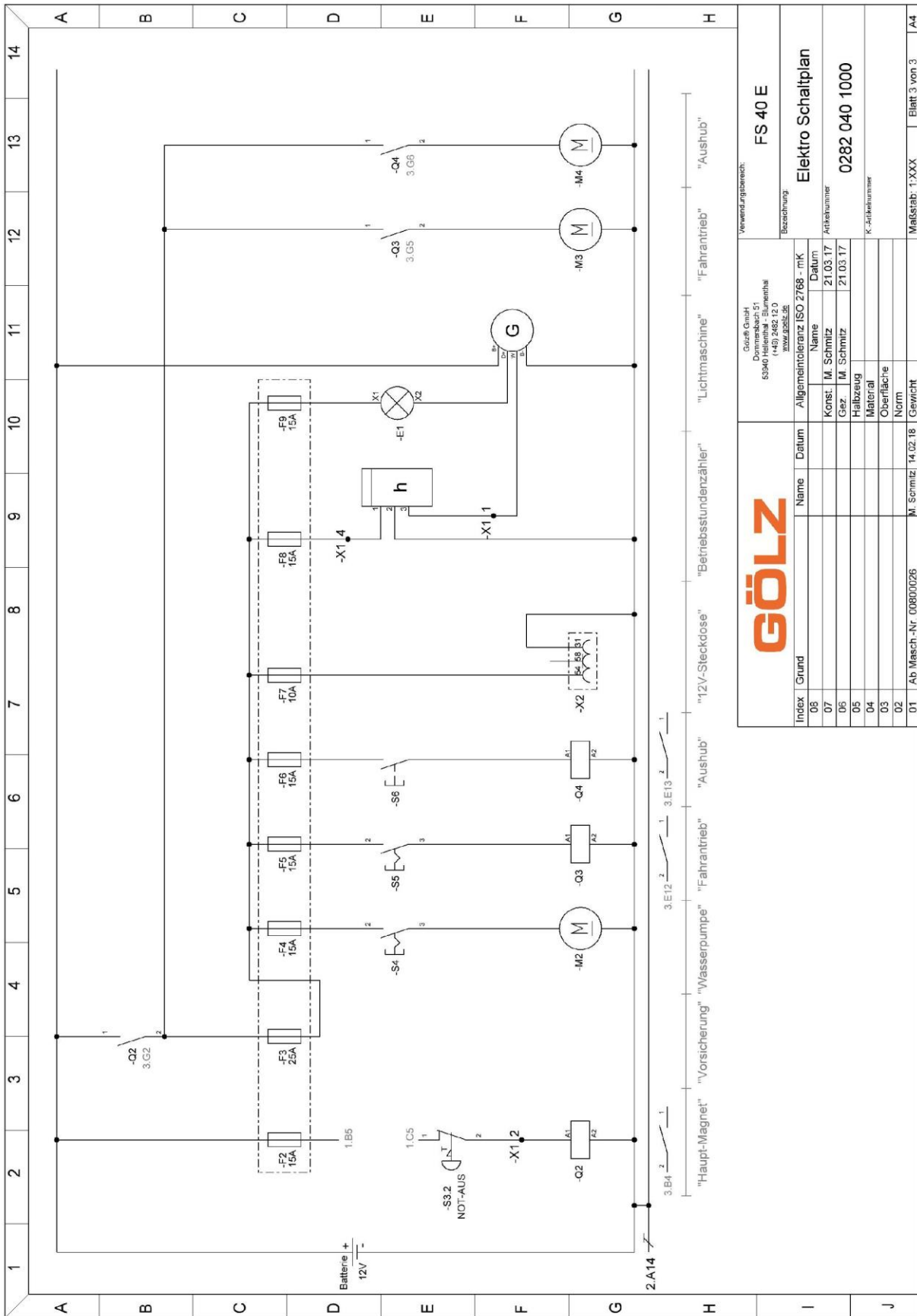
Götz GmbH Domänenbühl 51 53940 Heimerthal - Blumenhail 14071 0282 040 1000	
Allgemeintoleranz ISO 2768 - mK	



		Güzük GmbH Schimmelstraße 11 53940 Godesheim (149) 2482 12 0 www.golz.de		Verwendungsbereich: FS 40 E	
		Allgemeintoleranz ISO 2768 - mK		Bezeichnung Elektro Schaltplan	
06	Index	Grund	Name	Datum	Artikelnr.
07			Kerst: M. Schmitz	21.03.17	0282 040 1000
05			Gez: M. Schmitz	21.03.17	
04			Halbzeug		
03			Material		
02			Oberfläche		
01			Norm		
			Ab Mesch.-Nr. 00800026	M. Schmitz 14.02.18	Messtab: 1:XXX
					Blatt 2 von 3
					A4

1.D9-11
1.D9-12
1.D9-13
2.F5
13
14

"Haupt-Schütz"



		Götz GmbH D-53340 Heimbach - Blumenthal (+49) 2482 12 0 gvw@götz.de		Verwendungszweck: FS 40 E	
Index	Grund	Name	Datum	Bezeichnung	
06		Algemeintoleranz ISO 2768 - mK		Elektro Schaltplan	
07		Konst. M. Schmitz	21.03.17	Antragsnummer	
05		Gez. M. Schmitz	21.03.17	0282 040 1000	
05		Halbzeug		K- Artikelnummer	
04		Material			
03		Oberfläche			
02		Norm			
01	Ab Mesch-Nr.	00800026	M. Schmitz 14.02.18	Maßstab:	1:XXX Blatt 3 von 3 A4