

50ft x 3/8" (45) Hose Reel

HP-HRM050D / HP-HRM200D



Features:

- Direct hand-crank rewind with locking mechanism
- Solid steel construction
- Durable powdercoat finish
- Full flow swivel brass joint

Safety Precautions

1. Make sure incoming pressure does not exceed the rated pressure.
2. Use proper eye protection when assembling and using the hose reel.
3. Assemble the hose reel on a clean workbench free of debris and moisture.
4. Use soap and water when checking for air leaks.
5. Keep children away from work area.

Assembly & Operating Instructions

1. Connect the handle to the flange. Nuts go on handle side of flange.
2. Use (4) 3/8" or 10 mm bolts when securing the hose reel to ceiling or wall.
3. Use the provided nuts, bolts and mounting bracket when securing hose reel to a cart.
4. Use thread sealant (not provided) on inlet threads and on outlet hose (not provided).
5. Attach pigtail end to high pressure pump outlet.
6. Attach hose reel hose to swivel on hose reel
7. The hose reel is ready for operation.

WARNING:

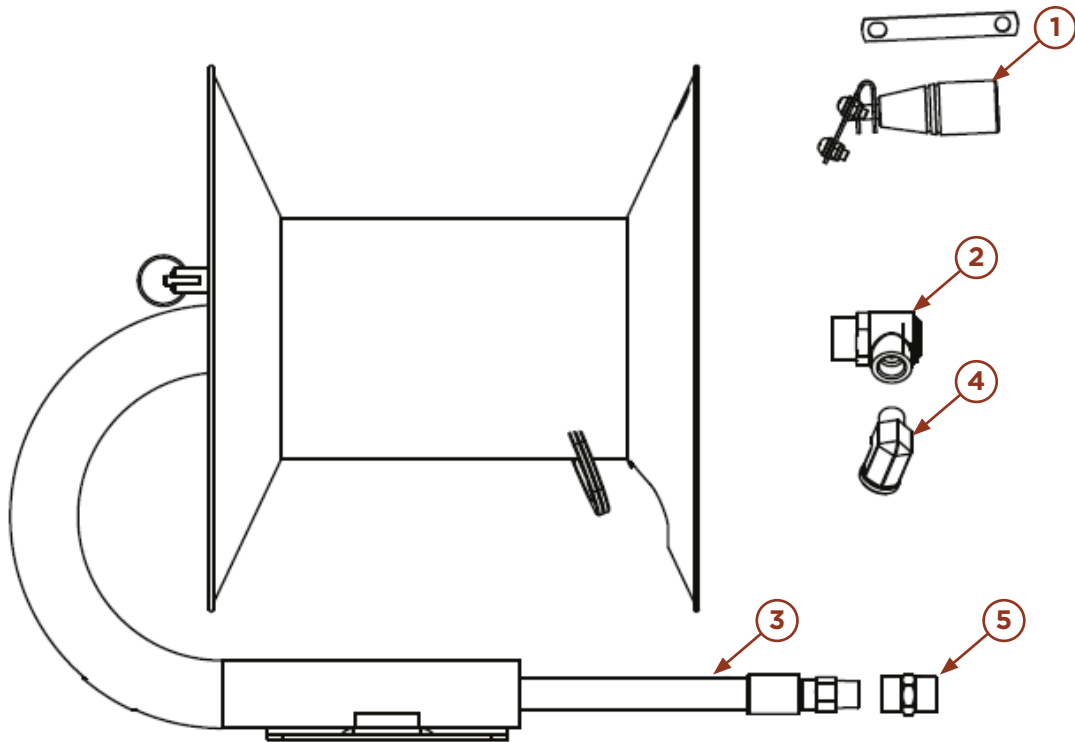
Exposure of skin directly to pressurized air or fluids could result in severe bodily injury!



Specifications				
Model	3/8" Capacity	Swivel Pressure Rating	Inlet	Outlet
D30001	50"	3500 PSI	3/8 NPT-F	3/8 NPT-F
D30001	100"			
D30001	150"		3/8 NPT-M	
D30001	200"			
D30001	200"			
D30001	250"			

50ft x 3/8" (45) Hose Reel

HP-HRM050 / HP-HRM200

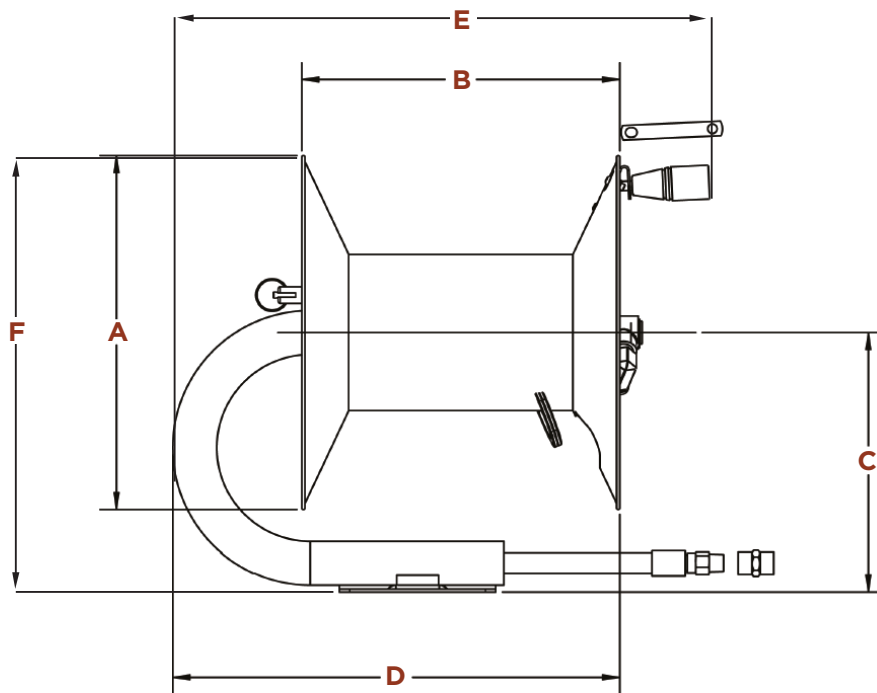
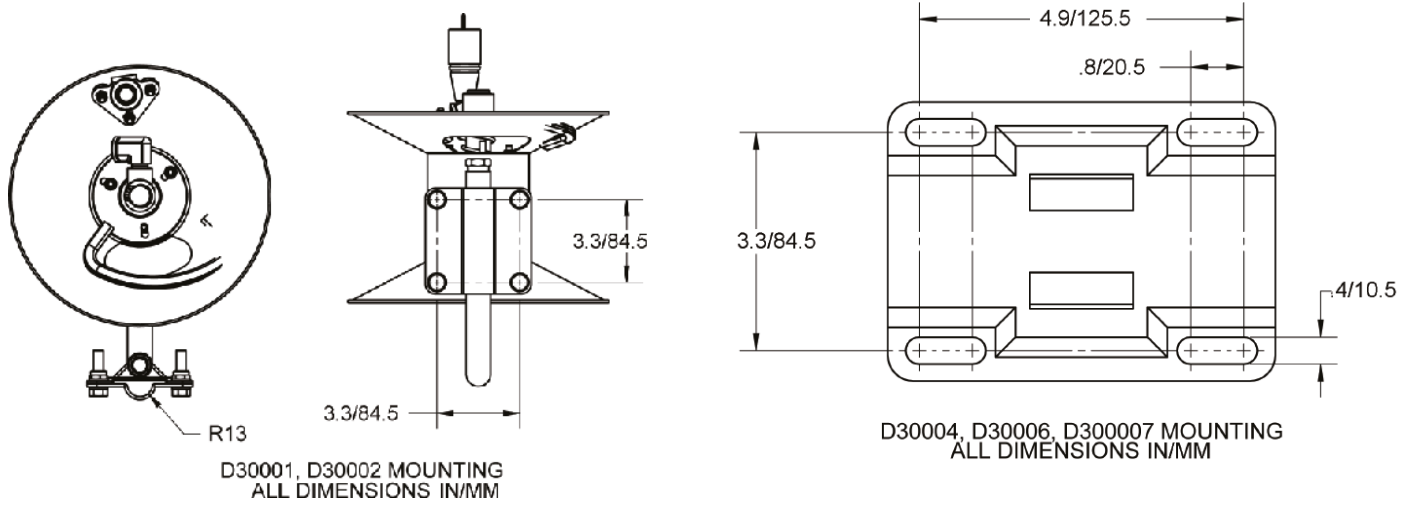


Parts List

	Item				
	1	2	3	4	5
D30001	100055	100887	N/A	D10116	N/A
D30002					
D30004		100053	D30003		D10065
D30006					
D30007					
D30008					

50ft x 3/8" (45) Hose Reel

HP-HRM050 / HP-HRM200



	Dimensions (in/mm)					
	A	B	C	D	E	F
D30001	10.5/267	7.7/195	7.6/192	11.0/281	14.4/365	12.8/326
D30002	10.5/267	12.0/308	7.6/192	15.2/386	18.5/471	12.8/326
D30004	13.4/340	9.8/250	9.7/249	10.8/274	18.0/458	16.5/419
D30006	13.4/340	12.2/310.6	9.8/248	16.2/410.6	19.4/493.5	16.5/418
D30007	16.6/422	9.8/250	11.5/291	14.5/367	13.2/335	19.8/502
D30008	13.4/340	14.8/375.6	9.9/251	18.6/472.1	21.9/555.7	16.6/421