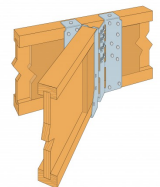
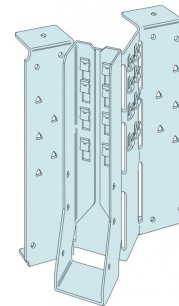
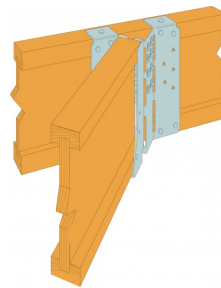
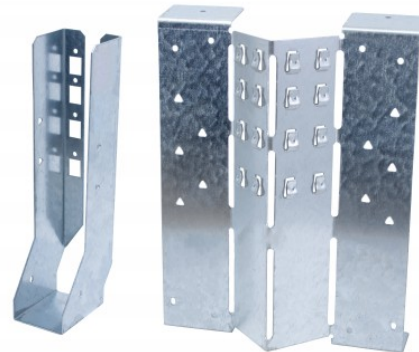


ITBS  
**Backer Free I-Joist Hanger with Adjustable Skew**

The ITBS solves the problem of skew hangers in I-joist to I-joist connections. It can be handed left or right on site by the carpenter, removing confusion when the floor is built opposite to the drawing. The ITBS is fully adjustable from 5° to 67.5° skew, reducing the need for 'special' skew hangers.

- Finally, the ITBS is a backer free hanger removing the need for backer blocks in standard installation. Overall, the revolutionary ITBS reduces build cost, confusion, speed of installation and stock holding.
- Standard 45° skew, with site adjustable skew from 5° to 67.5°.
- Non-handed hanger, can be left or right skew-adjusted on site, removing any handing confusion and reducing stock holding.
- Eliminates the need for backer blocks when supported from an I-joist header.
- Open top flange improves ease-of-installation.
- Can be used on I-joist or solid joist headers.
- Optional nail holes for additional download capacity.



**Step 6:** Locate the floor joist into the stirrup ensuring the joist is set tight to the back of the stirrup. The joist should be secured into the stirrup with all specified nails on the open face of the stirrup.

## Features

### Material

- Pre-galvanised mild steel

ITBS  
**Backer Free I-Joist Hanger with Adjustable Skew**

## Technical Data

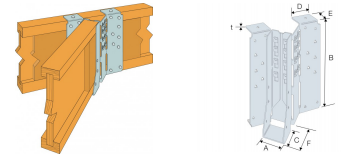
### Angle Guide

<b>50mm Backplate</b>		<b>100mm Backplate</b>	
<b>Skew Angle A (deg)</b>	<b>Distance B (mm)</b>	<b>Skew Angle A (deg)</b>	<b>Distance B (mm)</b>
<b>5</b>	106	5	206
<b>15</b>	104	15	200
<b>22.5</b>	100	22.5	190
<b>30</b>	95	30	180
<b>37.5</b>	87	37.5	166
<b>45</b>	79	45	149
<b>52.5</b>	69	52.5	130
<b>60</b>	58	60	109
<b>67.5</b>	46	67.5	86

# Technical data sheet



## ITBS Backer Free I-Joist Hanger with Adjustable Skew



### Product Dimensions

References	Joist Size [mm]	Product Dimensions [mm]						Header Holes			Joist Holes	
	Width	A	B	C	D	E	t	Ø4,1	Triangular Hole	Ø6x4 Oblong	Ø6x4 Oblong	Triangular Hole
ITBS195/40	38	40	195	64	55	37	1.5	10	10	2	2	4
ITBS200/40	38	40	200	64	55	37	1.5	10	10	2	2	4
ITBS220/40	38	40	220	64	55	37	1.5	10	10	2	2	4
ITBS235/40	38	40	235	64	55	37	1.5	10	10	2	2	4
ITBS240/40	38	40	240	64	55	37	1.5	10	10	2	2	4
ITBS245/40	38	40	245	64	55	37	1.5	10	10	2	2	4
ITBS300/40	38	40	300	64	55	37	1.5	10	10	2	2	4
ITBS195/47	45	47	195	64	55	37	1.5	10	10	2	2	4
ITBS200/47	45	47	200	64	55	37	1.5	10	10	2	2	4
ITBS220/47	45	47	220	64	55	37	1.5	10	10	2	2	4
ITBS235/47	45	47	235	64	55	37	1.5	10	10	2	2	4
ITBS240/47	45	47	240	64	55	37	1.5	10	10	2	2	4
ITBS245/47	45	47	245	64	55	37	1.5	10	10	2	2	4
ITBS300/47	45	47	300	64	55	37	1.5	10	10	2	2	4
ITBS195/50	47	50	195	64	55	37	1.5	10	10	2	2	4
ITBS220/50	47	50	220	64	55	37	1.5	10	10	2	2	4
ITBS235/50	47	50	235	64	55	37	1.5	10	10	2	2	4
ITBS240/50	47	50	240	64	55	37	1.5	10	10	2	2	4
ITBS245/50	47	50	245	64	55	37	1.5	10	10	2	2	4
ITBS300/50	47	50	300	64	55	37	1.5	10	10	2	2	4
ITBS200/56	53	56	200	64	55	37	1.5	10	10	2	2	4
ITBS200/61	58	61	200	64	55	37	1.5	10	10	2	2	4
ITBS245/61	58	61	245	64	55	37	1.5	10	10	2	2	4
ITBS301/61	58	61	301	64	55	37	1.5	10	10	2	2	4
ITBS200/63	60	63	200	64	55	37	1.5	10	10	2	2	4
ITBS220/63	60	63	220	64	55	37	1.5	10	10	2	2	4
ITBS240/63	60	63	240	64	55	37	1.5	10	10	2	2	4
ITBS300/63	60	63	300	64	55	37	1.5	10	10	2	2	4
ITBS220/66	63	66	220	64	55	37	1.5	10	10	2	2	4
ITBS235/66	63	66	235	64	55	37	1.5	10	10	2	2	4
ITBS240/66	63	66	240	64	55	37	1.5	10	10	2	2	4
ITBS245/66	63	66	245	64	55	37	1.5	10	10	2	2	4
ITBS300/66	63	66	300	64	55	37	1.5	10	10	2	2	4
ITBS200/72	69	72	200	64	55	37	1.5	10	10	2	2	4
ITBS220/72	69	72	220	64	55	37	1.5	10	10	2	2	4
ITBS240/72	69	72	240	64	55	37	1.5	10	10	2	2	4
ITBS300/72	69	72	300	64	55	37	1.5	10	10	2	2	4
ITBS220/75	72	75	220	64	55	37	1.5	10	10	2	2	4
ITBS235/75	72	75	235	64	55	37	1.5	10	10	2	2	4
ITBS245/75	72	75	245	64	55	37	1.5	10	10	2	2	4
ITBS300/75	72	75	300	64	55	37	1.5	10	10	2	2	4
ITBS195/78	75, 2x38 or 2x39	78	195	64	55	37	1.5	10	10	2	2	4
ITBS200/78	75, 2x38 or 2x39	78	200	64	55	37	1.5	10	10	2	2	4
ITBS220/78	75, 2x38 or 2x39	78	220	64	55	37	1.5	10	10	2	2	4
ITBS240/78	75, 2x38 or 2x39	78	240	64	55	37	1.5	10	10	2	2	4

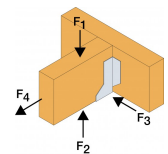
# Technical data sheet



ITBS

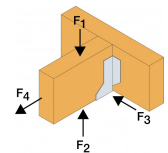
## Backer Free I-Joist Hanger with Adjustable Skew

References	Joist Size [mm]	Product Dimensions [mm]						Header Holes			Joist Holes	
	Width	A	B	C	D	E	t	Ø4,1	Triangular Hole	Ø6x4 Oblong	Ø6x4 Oblong	Triangular Hole
ITBS245/78	75, 2x38 or 2x39	78	245	64	55	37	1.5	10	10	2	2	4
ITBS300/78	75, 2x38 or 2x39	78	300	64	55	37	1.5	10	10	2	2	4
ITBS301/78	75, 2x38 or 2x39	78	301	64	55	37	1.5	10	10	2	2	4
ITBS195/91	89, 90 or 2x45	91	195	64	55	37	1.5	10	10	2	2	4
ITBS200/91	89, 90 or 2x45	91	200	64	55	37	1.5	10	10	2	2	4
ITBS220/91	89, 90 or 2x45	91	220	64	55	37	1.5	10	10	2	2	4
ITBS235/91	89, 90 or 2x45	91	235	64	55	37	1.5	10	10	2	2	4
ITBS240/91	89, 90 or 2x45	91	240	64	55	37	1.5	10	10	2	2	4
ITBS245/91	89, 90 or 2x45	91	245	64	55	37	1.5	10	10	2	2	4
ITBS300/91	89, 90 or 2x45	91	300	64	55	37	1.5	10	10	2	2	4
ITBS195/96	2x47	96	195	64	55	37	1.5	10	10	2	2	4
ITBS220/96	2x47	96	220	64	55	37	1.5	10	10	2	2	4
ITBS235/96	2x47	96	235	64	55	37	1.5	10	10	2	2	4
ITBS240/96	2x47	96	240	64	55	37	1.5	10	10	2	2	4
ITBS245/96	2x47	96	245	64	55	37	1.5	10	10	2	2	4
ITBS300/96	2x47	96	300	64	55	37	1.5	10	10	2	2	4
ITBS220/99	96 or 97	99	220	64	55	37	1.5	10	10	2	2	4
ITBS235/99	96 or 97	99	235	64	55	37	1.5	10	10	2	2	4
ITBS240/99	96 or 97	99	240	64	55	37	1.5	10	10	2	2	4
ITBS245/99	96 or 97	99	245	64	55	37	1.5	10	10	2	2	4
ITBS300/99	96 or 97	99	300	64	55	37	1.5	10	10	2	2	4



### Product Capacities - I-Joists - Standard Installation

References	Number of Fasteners			Safe Working Loads [kN]			Characteristic Capacities [kN]			
	Header		Joist	R <sub>1,SWL,Long Term</sub>		R <sub>2,SWL,Short Term</sub>	R <sub>1,k</sub>		R <sub>2,k</sub>	
	Top	Face	Bottom Qty	LVL Flanges ≥ 35 mm	C24 Solid Sawn Flanges 45 mm	N3.75x30	LVL Flanges ≥ 35 mm	C24 Solid Sawn Flanges 45 mm	N3.75x30	
	Qty	Qty		N3.75x30	N3.75x30		N3.75x30	N3.75x30		
ITBS	2	8	2	1	3.7	2.1	0.7	10.2	7.4	1.5



### Product Capacities - I-Joists - Enhanced Installation

References	Number of Fasteners			Safe Working Loads [kN]			Characteristic Capacities [kN]			
	Header		Joist	R <sub>1,SWL,Long Term</sub>		R <sub>2,SWL,Short Term</sub>	R <sub>1,k</sub>		R <sub>2,k</sub>	
	Top	Face	Bottom Qty	LVL Flanges ≥ 35 mm	C24 Solid Sawn Flanges 45 mm	N3.75x30	LVL Flanges ≥ 35 mm	C24 Solid Sawn Flanges 45 mm	N3.75x30	
	Qty	Qty		N3.75x30	N3.75x30		N3.75x30	N3.75x30		
ITBS	2	18	2	3	5.5	6.3	0.7	15	12.8	1.5

NOTE: Enhanced installation onto I-joist headers require the header to have back blocks installed and web stiffeners installed on a carried I-joist. Backer blocks and web stiffeners to be installed in accordance with I-joist manufacturer's instructions

ITBS

**Backer Free I-Joist Hanger with Adjustable Skew**

Winchester Road Cardinal Point Tamworth  
Staffordshire B78 3HG  
tel: +44 1827 255600  
fax: +44 1827 255616

Copyright by Simpson Strong-Tie®

Information presented on this document is the exclusive property of Simpson Strong-Tie®  
It is valid only when associated with products supplied by Simpson Strong-Tie®

ITBS

**Backer Free I-Joist Hanger with  
Adjustable Skew**



[www.strongtie.co.uk](http://www.strongtie.co.uk)