



# **Manual Log Splitter Operator's Manual LST33/14**

**FOR YOUR SAFETY  
READ AND UNDERSTAND THE ENTIRE MANUAL  
BEFORE OPERATING THIS MACHINE**

## Warranty Registration Form

Model:	
Serial Number:	
Type of Use:	Business / Domestic
Name:	
Business Name:	
Address:	
Email Address:	
Phone Number:	
Date of Purchase:	
Place of Purchase:	
Proof of Purchase enclosed:	

For the warranty to be valid the Warranty Registration Form must be completed and returned to Lumag Distribution Limited within 14 days of the purchase together with a copy of the purchase invoice.

We will use your email to confirm that we have received the completed Warranty Registration Form and contact you about any errors or omissions on the form. We may occasionally use this email address to make you aware of news, technical advice and special offers. If you do not wish to receive such emails please tick this box  .

## CONTENTS

Introduction.....	2
Caution.....	2
Adjustments .....	2
Operation .....	3
Changing cutter blades.....	3
Specifications .....	3
Spare parts list .....	4-5

## INTRODUCTION

Thank you for your selection of our equipment.

We have taken care in the design, manufacture and testing of this product. Should service or spare parts be required, prompt and efficient service is available from our branches.

General Safety instructions for the Operation of Power Equipment Our factory's goal is to produce power equipment that helps the operator work safely and efficiently. The most important safety device for this or any tool is the operator. Care and good judgement are the best protection against injury. All possible hazards cannot be covered here, but we have tried to highlight some of the important items, individuals should look for and obey Caution, Warning and Danger signs placed on equipment, and displayed in the workplace. Operators should read and follow safety instructions packed with each product.

Learn how each machine works. Even if you have previously used similar machines, carefully check out each machine before you use it .Get the "feel" of it and know its capabilities, limitations, potential hazards, how it operates, and how it stops. We has no duty if person don't operate as instruction said.

## CAUTION

Ensure cutters are standing on a firm level surface.

Wear eye protection, gloves and safety footwear.

Do not allow hands or feet to be between the blades when carrying out any blade adjustments.

Disconnect handle when not in use.

When moving the machine ensure there is no material on the table which will slide off when the machine is tilted.

Never use an extension bar on the jacking handle.

Avoid warped or 'green' blocks and slabs. These will break prematurely and not where required. All slabs must have flat parallel faces; riven slabs are unsuitable for splitting.

Check sharpness of blades regularly.

Do not attempt to cut material of a size outside the range of the cutter.

Please note that soft material will break without any audible noise and the pieces may not fall apart. The impression may be that the material has not broken and there may be the temptation to continue pumping. This could cause the top and bottom blades to become buried and may ultimately damage the machine beyond repair. Damage caused in this way will invalidate the warranty.

It is not possible to be specific with regard to the types of materials that are suitable for splitting and that are unsuitable. Generally a material that splits quickly, easily and cleanly with a sharp crack-like noise is suitable; a material that splits irregularly and requires a high

level of effort is unsuitable. Damage caused by continued attempts to split unsuitable material is not covered by warranty.

## ADJUSTMENTS

In order to obtain a clean cut (break) it is essential that the upper blade is parallel to the surface of the material to be cut. To ensure this, place the material to be cut across the lower blade. Check that the blade contacts all the way along and then retighten the hand screw.

## OPERATION

Check the blade adjustment as above.

Place the material between the blades so that the cutting action is in the centre of the blades and not towards one end.

The material will usually break with a sharp audible crack, but see 'CAUTION' note above.

Clear all debris from around blades after each cut.

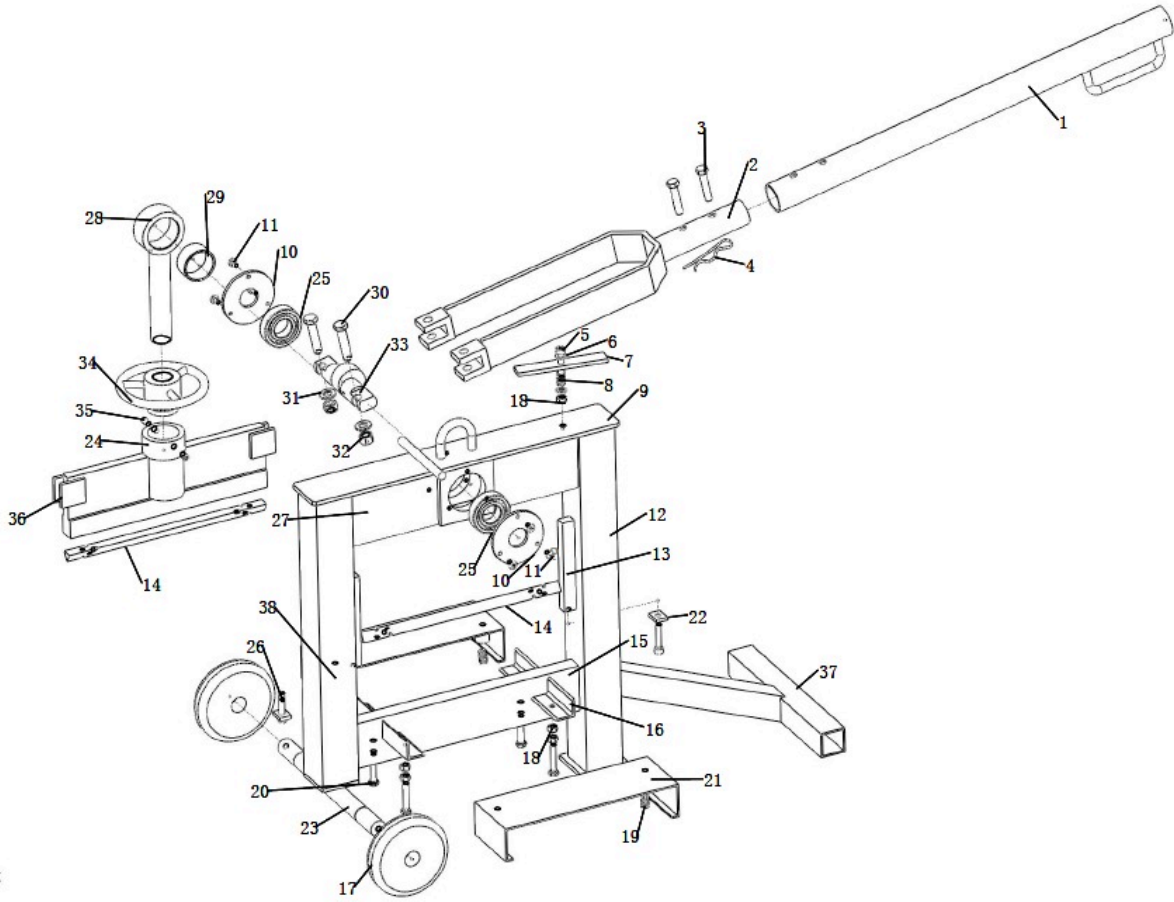
## CHANGING CUTTER BLADES

If the cutter blades are worn then they will need turning or replacing. Use a long bar as a drift and knock each blade out from one end. Turn each blade so that an unused edge is at the cutting position and knock back into position. If all cutting edges are worn and the blade is to be discarded the new blade may be used as a drift and remain in position after knocking out the worn blade.

## SPECIFICATIONS

Model	CNBS-32
Weight(kg)	33.5
Blade length(mm)	320
Min cutting height(mm)	26
Max cutting height(mm)	140
Drive	Manual
Packing size L*W*H(mm)	890*350*720

# SPARE PARTS LIST



NO.	item	Spec
1	Chopper handle	
2	Chopper holder	
3	Dowel pin 10x50	10x50
4	Spring pin	
5	Hex socket screw M8x40	M8x40
6	Flat washer M8	M8
7	Chopper stoper	
8	Spring	
9	Top plate	
10	Bearing cover	
11	Pan head screw M6x10	M6x10
12	Square pipe	
13	Guide rail	
14	Blade	
15	Chopping block	
16	Support	
17	Wheel	
18	Screw M8	M8
19	Spring	
20	Hex screw M8x45	M8x45
21	Bedplate	
22	Blade stopper	
23	Wheel axle	
24	Guide screw fasten set	
25	Bearing 6206	6206
26	Hex socket screw M8x40	M8x40
27	Bearing support	
28	Guide screw	
29	Axle sleeve	
30	Hex screw M12x55	M12x55
31	Flat washer M12	M12
32	Screw M12	M12
33	Unbalance shaft	
34	Handwheel	
35	Fasten screw M8x16	M8x16
36	Blade-hold plate	
37	Support square pipe	
38	Spring fasten set	