



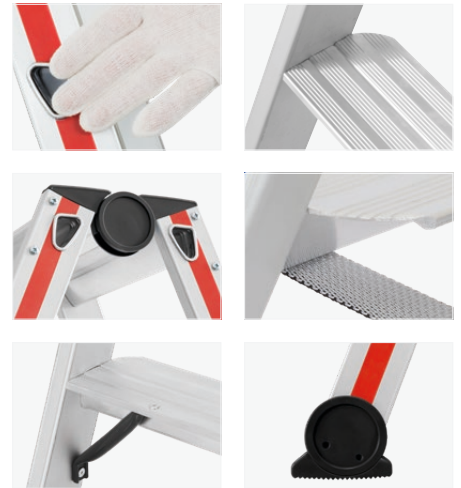
10
YEAR
GUARANTEE

★ ★ ★
MADE IN
GERMANY



4024 Step ladder, double-sided accessible

- › **Anodised stiles** avoid dirty hands from aluminium abrasion.
- › Step depth 80 mm. Front step edges flush with stile.
- › Sturdy **steel hinges**.
- › Spreader lock provided by high-strength 20 mm wide perlon straps.
- › Sturdy reinforcement braces on first step.
- › Extra large ladder shoes press-fitted in.



Number of steps	2×3	2×4	2×5	2×6	2×7	2×8
Stile (approx. mm)	55	55	55	55	55	55
Length (approx. m)	0.78	1.03	1.28	1.53	1.79	2.02
Standing height (approx. m)	0.19	0.42	0.65	0.88	1.12	1.34
Reach height (approx. m)	2.19	2.42	2.65	2.88	3.12	3.34
Vertical height (approx. m)	0.70	0.90	1.15	1.38	1.61	1.84
Width top/bottom (approx. mm)	340/410	340/435	340/460	340/485	340/510	340/540
Base width (approx. m)	0.75	0.90	1.10	1.30	1.50	1.65
Weight (approx. kg)	3.6	4.5	5.5	6.7	8.0	8.8
Order no.	402406	402408	402410	402412	402414	402416

For an explanation of standing/reach height see on page 5.

Spare part:

- › Spare parts set hinges, order no. 0052872, see on page 137.