

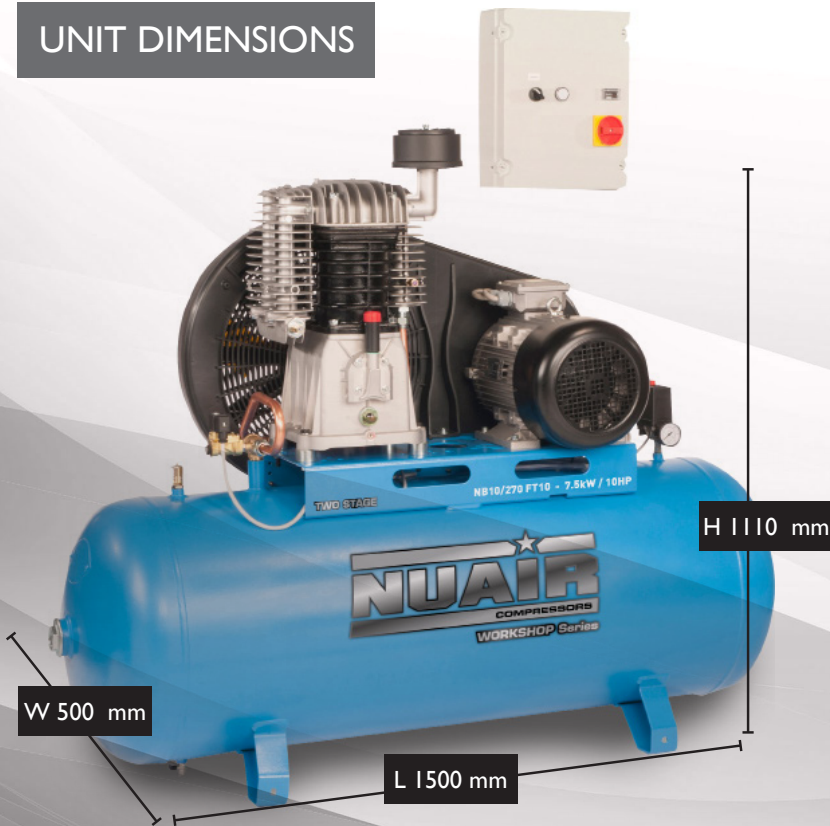
DATA SHEET

# NB10-270 FT10

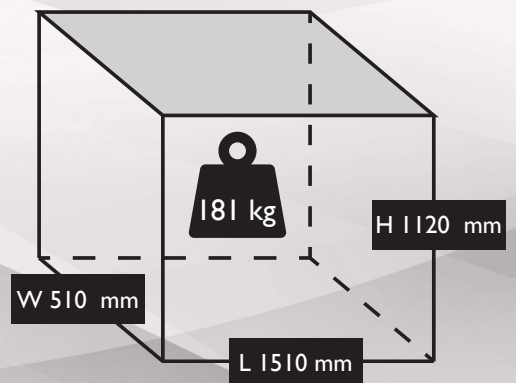
S-N1NN905FPS019



## UNIT DIMENSIONS



## PACKAGE DIMENSIONS



## TECHNICAL DATA

	Max. Pressure	10 Bar / 145 PSI
	Power	10.0 HP / 7.5 kW
	Capacity (displacement)	38.1 CFM / 1080 L/Min
	Voltage	400V / 50 Hz
	Supply	20 amp
	FLC	16
	Pump	NB10 (S-NI0000A)
	dB(A)	
	Dimensions L x W x H (unit)	1500 x 500 x 1110 mm

	Dimensions L x W x H (boxed)	1510 x 510 x 1120 mm
	Weight	181 kgs
	Motor Speed	2850 RPM
	Oil Capacity	3 Ltr
	Receiver Size	270 Ltr
	Head Bolt Torque	45 Nm
	Cable Length	2 Mtr
	Pump Speed	1250 RPM
	Outlet Thread Size	1/2" BSP



E & OE  
Images shown are for illustration and may vary from the actual product

Unit 5, Tower Estate,  
Warpsgrove Lane,  
Chalgrove,  
Oxon,  
OX44 7XZ

Tel: +44(0)1865 892620  
Fax: +44(0)1844 390955

sales@fps-compressors.co.uk  
www.fps-compressors.co.uk

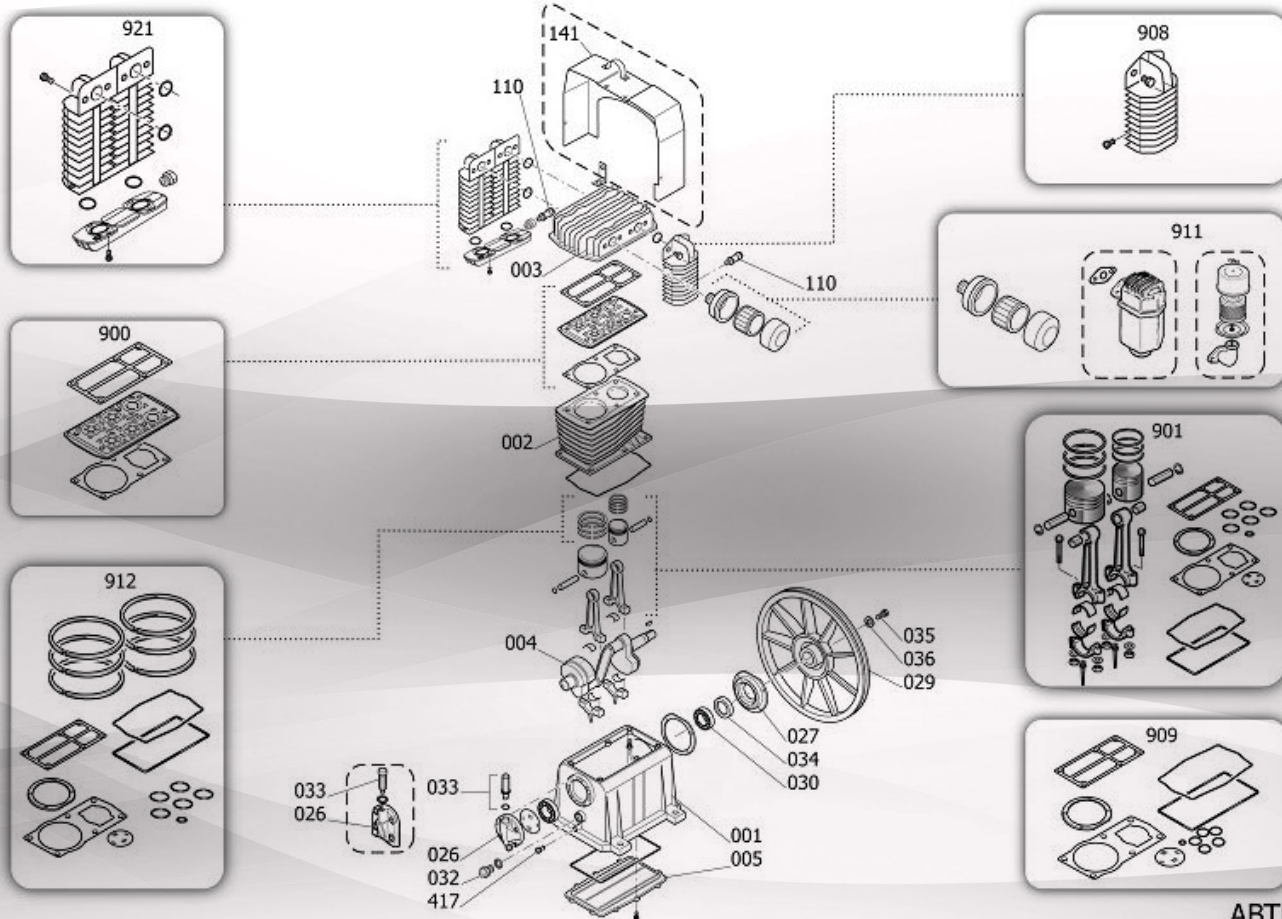


DATA SHEET

# NB10 PUMP

S-NI0000A

NB10-270 FT10 (S-NINN905FPS019)



## COMPONENTS (see drawing above)

Position	Part No.	Description
2	F-113190020	Cylinder
3	S-4105773	Head
900	S-9434A05	Valve plate
901	S-9434B07	Piston & Con Rod
909	S-9434F06	Gasket Kit
911	S-9420937	Air filter kit

## OTHER SERVICE PARTS

Part No.	Description
S-PK-NB10	Service Kit
S-4101335	NRV
S-4101390	Pressure Switch
LUB-PIST-ILT	Lubricant
N/A	Capacitor (motor)
S-4101330	V Belt



E & OE  
Images shown are for illustration and may vary from the actual product

Unit 5, Tower Estate,  
Warpsgrove Lane,  
Chalgrove,  
Oxon,  
OX44 7XZ

Tel: +44(0)1865 892620  
Fax: +44(0)1844 390955

sales@fps-compressors.co.uk  
www.fps-compressors.co.uk

