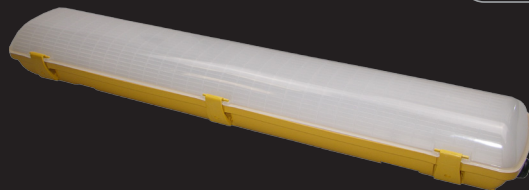


LED 110V Non-Corrosive Site Lights Instructions p.1

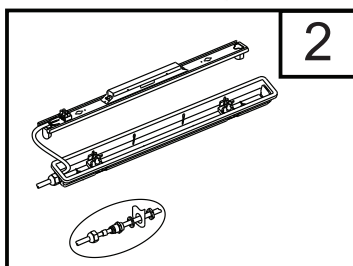


For models: WFLED220S, WFLED220SE, WFLED224S,
WFLED224SE, WFLED540S-1 & WFLED540SE-1

This installation must be carried out by an electrician.
Please read these instructions carefully before installation.
Leave a copy for the user/maintenance engineer for future reference.

Specification

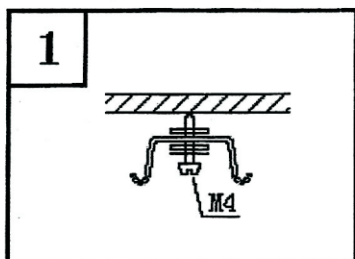
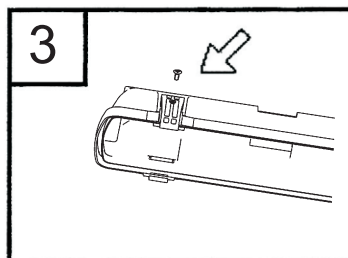
- LED 110V Non-Corrosive Site Light
- 110V, 50/60Hz
- 20W, 24W & 40W
- 112-238pcs of 2835 SMD LED
- 1900-3600 Lumen output
- IP65
- 4100K Colour temperature
- ≥ 80 CRI
- 3 Year guarantee



Instructions

Before attempting to install units ensure power outlet is off for your own safety.

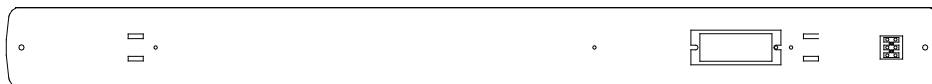
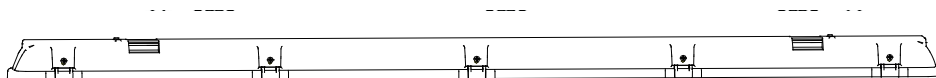
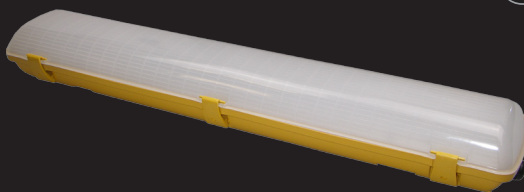
1. To ensure the success of installation, be sure to read these instructions and review the diagrams thoroughly before beginning.
2. All electrical connections must be in accordance with the local code, ordinance, or the National electrical code. If you are unfamiliar with methods of installing electrical wiring, secure the services of a qualified licensed electrician.
3. Before starting the installation, disconnect the power by turning off the circuit breaker, or by removing the fuse at the fuse box.



LED 110V Non-Corrosive Site Lights Instructions p.2



For models: WFLED220S, WFLED220SE, WFLED224S,
WFLED224SE, WFLED540S-1 & WFLED540SE-1



Connect Brown to Live, Blue to Neutral and Green / Yellow cable to Earth.

Testing

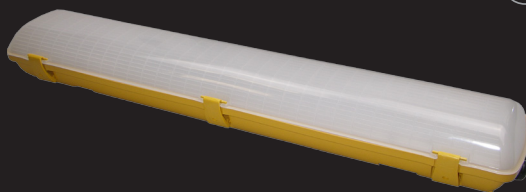
The emergency light must be tested and inspected regularly in accordance with local codes of practice. Note: for safety reasons, tests should be carried out during daylight hours.

The minimum recommended test schedule is as follows:

After installation, allow 36 hours to ensure full battery charge, and then interrupt the supply; check after 3 hours that the tube is still lighting.

1. Check that the charge indicator LED is working
2. Monthly – interrupt the power supply for a short period and check tube lights
3. Six-monthly – check one hour duration
4. At the end of 3rd year, and annually thereafter – check 3 hour duration: batteries must be replaced when they can no longer support 3 hour operation.
5. Complete record sheet on installation and retain in maintenance file.
6. Update file with on-going test records for inspection by fire officer or other duly authorised person.

LED 110V Non-Corrosive Site Lights Instructions p.3



For models: WFLED220S, WFLED220SE, WFLED224S,
WFLED224SE, WFLED540S-1 & WFLED540SE-1

TEST RECORD SHEET

Month	Test	Year 1		Year 2		Year 3		Year 4		Year 5	
		signed	date	signed	date	signed	date	signed	date	signed	date
1	FUNCTIONAL										
2	FUNCTIONAL										
3	FUNCTIONAL										
4	FUNCTIONAL										
5	FUNCTIONAL										
6	1 hour										
7	FUNCTIONAL										
8	FUNCTIONAL										
9	FUNCTIONAL										
10	FUNCTIONAL										
11	FUNCTIONAL										
12	3 hour										

Installed by:

Installation Date:

Contact Number:

Guarantee

This product is guaranteed for a period of 3 year from the date of purchase. The guarantee is invalid in the case of improper use, tampering, removal of the Q.C. date label, installation in an improper working environment or installation not according to the current edition of the I.E.E. Wiring Regulations (BS7671). The guarantee is also invalidated if the luminaire has been Mega tested. Should this product fail during the guarantee period it will be replaced free of charge, subject to correct installation and return of the faulty unit. We do not accept responsibility for any installation costs associated with the replacement of this product. We reserve the right to alter specifications without prior notice. Guarantee is not covered for lamp breakage.



Product is suitable for
mounting on flammable
material



RoHS



Product complies with
all relevant European
standards

Red Arrow Trading
Elsworth House, Herries Road South, Sheffield,
S6 1QS

T: 0800 195 0006 F: 0870 043 3946
E: sales@redarrowtrading.com www.redarrowtrading.com