

Emergency LED Twin Spot Installation Instructions Page 1



For models: LF292E

Please read these instructions carefully before use.

Leave a copy for the user/maintenance engineer for future reference.

Specification

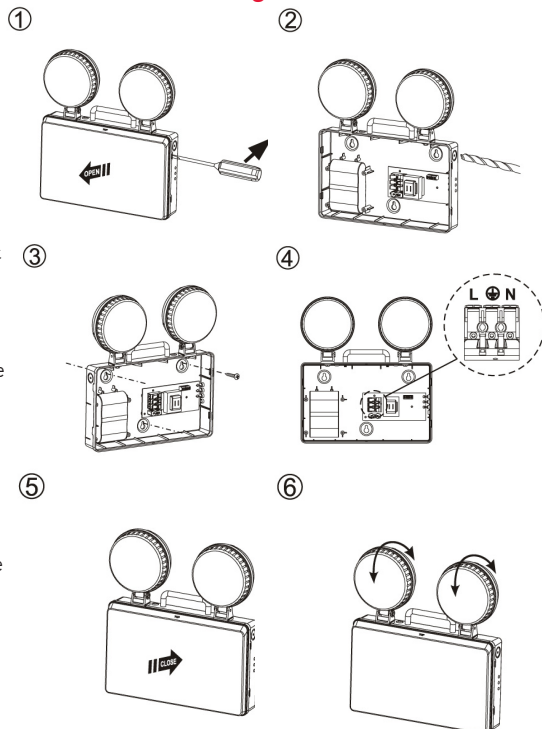
- 220-240V
- 5.2W
- Two x 40pcs of \varnothing 5 LED
- 416 Lumen output
- 0.91 Power factor
- One year guarantee
- Dimensions: L: 308.5 x W: 280 x D: 55.5mm

2. If the unit is stored without mains for longer than six months, we recommend the unit is charged for 24 hours, discharged for 1 hour and then recharged for 24 hours to prevent long term damage to the battery pack.
3. The unit must be tested every month for at least ten minutes on months one to eleven and the full three hours on month twelve. This cycle needs to be repeated every year.

Instructions

1. This luminaire is IP20 rated and suitable for indoor installation.
2. The unit operates in non-maintained mode, i.e. the lamps are off when the mains is applied and switched on when the mains supply fails.
3. Once the fitting has been mounted and wired the cover must be replaced and secured to ensure the IP20 integrity.
4. The unit must be wired as per the wiring diagram Number Four in the installation drawings.
5. Once power has been applied check to make sure the Charge LED, lamp one & lamp two LED are illuminated.
6. Allow the unit to charge for at least ten minutes and remove the mains supply to check that both LED lamps are illuminated.

Installation Drawings



Notes

1. The unit must be charged for at least 24 hours to ensure the unit will last for its full duration.

Emergency LED Twin Spot Installation Instructions Page 2



For models: LF292E

ROUTINE TEST RECORD

MONTH	TEST	First Year		Second Year		Third Year		Fourth Year		Fifth Year	
		Signed	Date	Signed	Date	Signed	Date	Signed	Date	Signed	Date
1	Function										
2	Function										
3	Function										
4	Function										
5	Function										
6	Function										
7	Function										
8	Function										
9	Function										
10	Function										
11	Function										
12	Function										

Eventually you will want to replace this fitting and or the battery pack will come to the end of its life or you choose to update or upgrade the fitting by replacing it. Please do not dispose of it with your normal household waste, recycle where the facilities exist. When you need to dispose of this fitting, check with your retailer or local authority for suitable options. New regulations will encourage the recycling of waste from Electrical and Electronic Equipment (European “WEEE Directive” effective August 2005).

PRN WEE/BJ1331XR



RoHS



Product is suitable for mounting on flammable material



Product complies with all relevant European standards

Guarantee

This product is guaranteed for a period of one year from the date of purchase. The guarantee is invalid in the case of improper use, tampering, removal of the Q.C. date label, installation in an improper working environment or installation not according to the current edition of the I.E.E. Wiring Regulations (BS7671). The guarantee is also invalidated if the luminaire has been Mega tested. Should this product fail during the guarantee period it will be replaced free of charge, subject to correct installation and return of the faulty unit. We do not accept responsibility for any installation costs associated with the replacement of this product. We reserve the right to alter specifications without prior notice.