

LED IP65 Emergency Twin Spot Installation Instructions p.1

For models: LF292LED-IP



This installation must be carried out by an electrician.

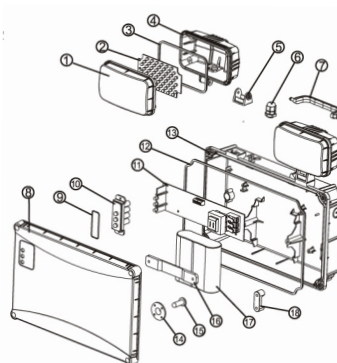
Please read these instructions carefully before installation.

Leave a copy for the user/maintenance engineer for future reference.

Specification

- 220-240V 50/60Hz
- 6.5W LED (2 x 54pcs)
- IP65
- 490 Lumens output
- 0.87 Power factor
- 6000K Colour Temperature
- 3 Hours emergency duration
- 1 Year guarantee

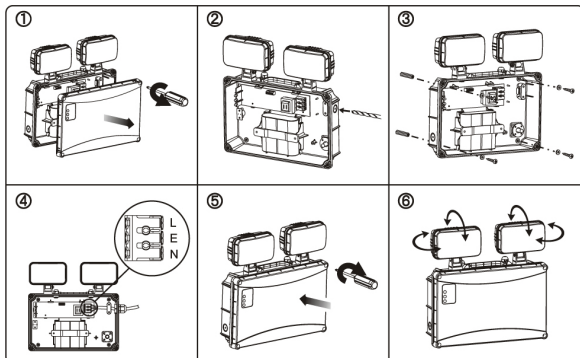
Contents Diagram



Contents

1. Lamphead Diffuser x 2
2. LED PCB x 2
3. Waterproof Rubber Loop x 2
4. Lamphead Housing x 2
5. Lamphead Holder x 2
6. Waterproof Joint x 4
7. Handle
8. Cover
9. Waterproof Rubber Loop (Indicator)
10. Light Guide Tube
11. Main PCB
12. Waterproof Rubber Loop (Bottom Case)
13. Bottom Case
14. Holder of Rubber Ring
15. Rubber Ring
16. Battery Holder
17. Battery
18. Holder of Power Line

Installation



1. Fix the fitting to the wall. IMPORTANT NOTE: TO EXTEND BATTERY LIFE PLEASE INSTALL FITTING LAMP SIDE UP.

2. Connect mains supply wiring as follows:



LED IP65 Emergency Twin Spot

Installation Instructions

p.2



For models: LF292LED-IP

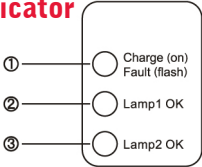
3. Power line and battery wires should be connected tightly (power line should assemble match with PG13.5 waterproof joint), and fix all screws.
4. Switch on 220-240V AC supply and check that the green LED indicator illuminates to confirm charging of batteries.
5. Allow a short period for part charging of the batteries and then isolate the mains supply to the fitting in order to check operation in emergency mode. During the first use, after a continuous charge of 36 hours, a mains failure should be simulated to ensure that the fitting works for its specified time (only at a safe and appropriate time). The fitting will be fully charged within 24 hours.

Safety

1. Ensure that there is a minimum spacing of 30mm around the fitting for adequate ventilation.
2. Contact your local authorities for more information on the safe disposal of batteries.
3. Do not expose to water.
4. If the external flexible cable or cord for this luminaire is damaged, ensure it is replaced by a qualified electrician.
5. Batteries are the Ni-Cd type and have a normal service life of approximately 4 years. Batteries should in any case, be replaced only with the type specified, and by a qualified electrician.
6. Before commencing installation (and before work of any kind to the fitting) ensure that the electricity supply and the battery pack are disconnected.

Functions of LED Indicator

1. Failure / charging indicating.
2. Lamphead 1 indicator.
3. Lamphead 2 indicator.



Accessory List

Picture	Description	Quantity
	PG13.5 Waterproof Joint	1pc
	M3.5x25mm Screw	4pcs
	Ø7 Rubber Ring	4pcs
	25mm Rubber Pillar	4pcs

LED IP65 Emergency Twin Spot Installation Instructions p.3



For models: LF292LED-IP

TEST RECORD SHEET

Month	Test	Year 1		Year 2		Year 3		Year 4		Year 5	
		signed	date	signed	date	signed	date	signed	date	signed	date
1	FUNCTIONAL										
2	FUNCTIONAL										
3	FUNCTIONAL										
4	FUNCTIONAL										
5	FUNCTIONAL										
6	1 hour										
7	FUNCTIONAL										
8	FUNCTIONAL										
9	FUNCTIONAL										
10	FUNCTIONAL										
11	FUNCTIONAL										
12	3 hour										

Installed by:

Installation Date:

Contact Number:

Eventually, you may want to replace this fitting:

When the fitting and or battery pack come to the end of their life or you choose to replace it, please do not dispose of it with your normal household waste, please recycle where facilities exist. When you need to dispose of this fitting, check with your retailer or local authority for suitable options. New regulations will encourage the recycling of waste from Electrical and Electronic Equipment (European “WEEE Directive” effective August 2005).

RoHS

Product is suitable for mounting on flammable material

Product complies with all relevant European standards

Guarantee

This product is guaranteed for a period of 1 year from the date of purchase. The guarantee is invalid in the case of improper use, tampering, removal of the Q.C. date label, installation in an improper working environment or installation not according to the current edition of the I.E.E. Wiring Regulations (BS7671). The guarantee is also invalidated if the luminaire has been Mega tested. Should this product fail during the guarantee period it will be replaced free of charge, subject to correct installation and return of the faulty unit. We do not accept responsibility for any installation costs associated with the replacement of this product. We reserve the right to alter specifications without prior notice.