

High Speed Electronic Hand Dryer



Installation Instructions p.1



For models: YD-208C

This installation must be carried out by a qualified electrician.

Please read these instructions carefully before installation.

Leave a copy for the user/maintenance engineer for future reference.

Specification

- Hand Dryer
- Supply voltage 220V AC / 50Hz
- 550W Motor Power 700W Heating Power 1250W Overall (unit power)
- Temperature of warm air $40^{\circ}\text{C} \pm 10^{\circ}\text{C}$.
- Air Speed 30m/s Motor Speed 25000r.p.m
- Sensing Distance $12\text{cm} \pm 3\text{cm}$
- Finish Chrome.

Important User Information

- Ensure packaging materials are disposed of properly.
- Any damage to the hand-dryer on delivery should be reported to the supplier before the unit is connected.
- To ensure the safe operation of the hand dryer, it should only be installed and connected by a trained specialist in accordance with the instructions on this sheet.
- The hand-dryer should only be used for the purpose for which it is intended.
- Repairs to the hand-dryer should only be carried out by a trained specialist.
- There must be a minimum distance of 1.1m from the floor to the base of the hand dryer.

Installation Instructions

- Use template to mark the required position on the wall.
Do not mount the hand dryer over a shiny surface as it will activate the sensor.
- Do not place anything in the area where the sensor is located.
- Drill four holes as per the template. Place the plugs in the holes.
- Loosen the screws from the hand dryer and remove the cover.

- Position the unit upon the template and secure with the 4 screws.
- Replace the cover and secure.

Adjustment of sensor distance

- Remove the cover and adjust the small dial on the sensor board to provide you with the desired sensitivity. Turn clockwise to increase the sensitivity and counter clockwise to reduce the sensitivity.

Temperature control

- The heat switch is located underneath the unit. Turn on for warm air and off for cool air.

Troubleshooting

- Stopped working - check power - check sensor device - check sensing distance.
- Only cold air - Check the temperature switch.

Maintenance

- No special maintenance is required. The casing may, if necessary, be wiped with a damp cloth. Do not use any caustic, scouring or solvent-containing cleaning agents. It may be necessary to clean the two lenses of the proximity sensor at certain intervals using a soft cloth.

NOTICE

- This appliance is not intended for use by persons (including children) with reduced physical, sensory or mental capabilities, or lack of experience and knowledge, unless they have been given supervision or instruction concerning use of appliance by a person responsible for their safety. Children should be supervised to ensure that they do not play with the appliance.
- If the supply cord is damaged, it must be replaced by the manufacturer, its service agent or similarly qualified persons in order to avoid a hazard.



Product complies with all relevant European standards



High Speed Electronic Hand Dryer

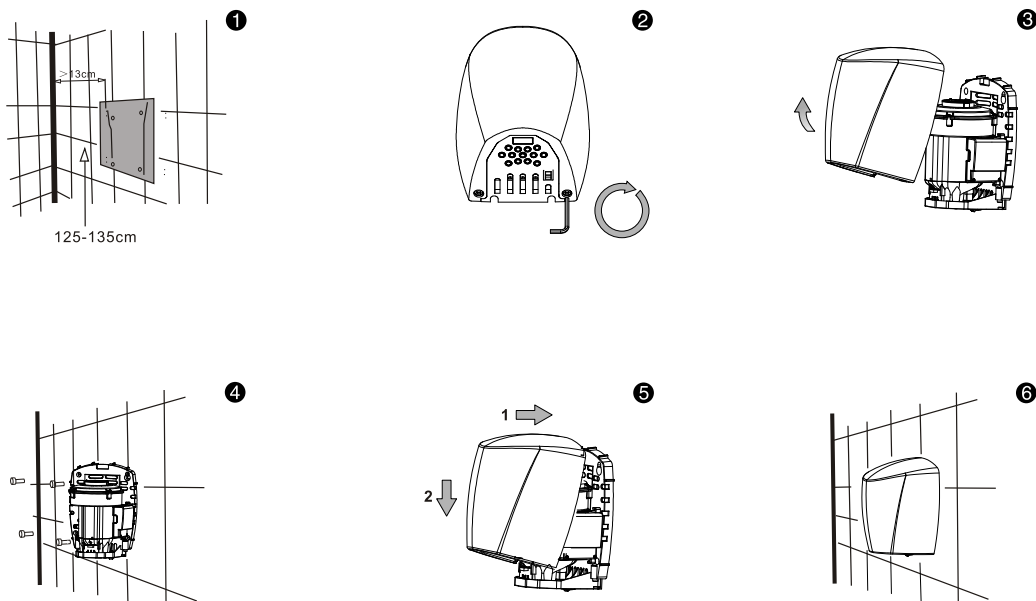


Installation Instructions p.2



For models: YD-208C

Installation Instructions Diagram



Guarantee

This product is guaranteed for a period of 1 year from the date of purchase. The guarantee is invalid in the case of improper use, tampering, removal of the Q.C. date label, installation in an improper working environment or installation not according to the current edition of the I.E.E. Wiring Regulations (BS7671). The guarantee is also invalidated if the luminaire has been Mega tested. Should this product fail during the guarantee period it will be replaced free of charge, subject to correct installation and return of the faulty unit. We do not accept responsibility for any installation costs associated with the replacement of this product. If a PIR is used in conjunction with any Red Arrow lighting product we do not accept any responsibility for premature failure of lamps or control gear. Your statutory rights are not affected. We reserve the right to alter specifications without prior notice.