

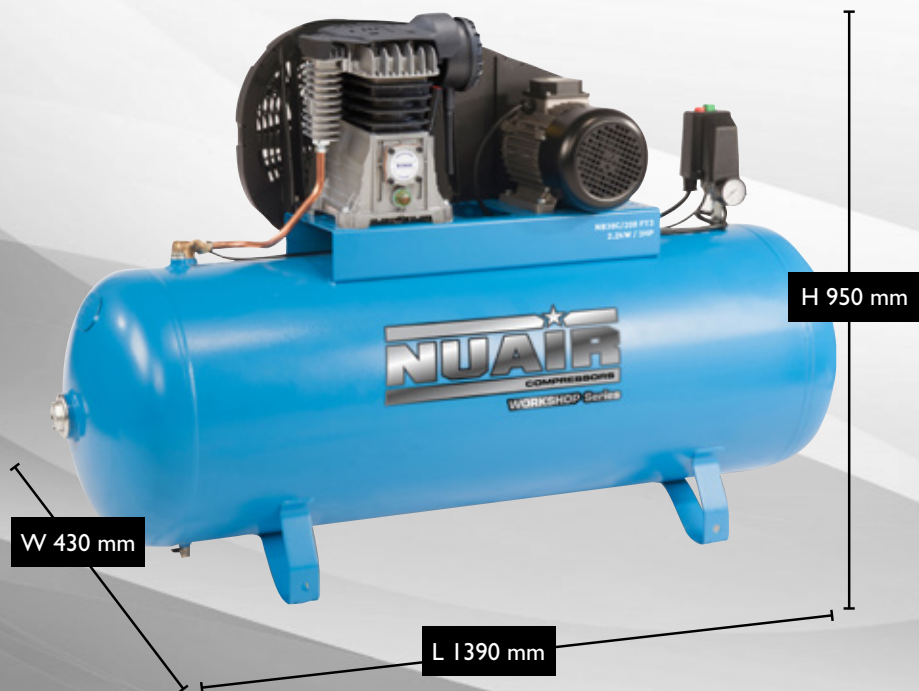
DATA SHEET

**B3800B-PRO/200 FT3 UK**

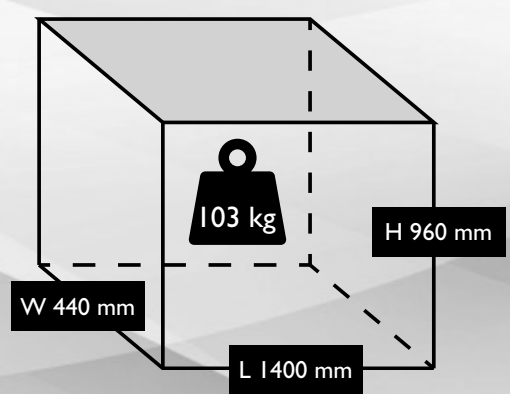
S-36LN54IFPS143



UNIT DIMENSIONS



PACKAGE DIMENSIONS



TECHNICAL DATA

	Max. Pressure	10 Bar / 145 PSI
	Power	3.0 HP / 2.2 kW
	Capacity (displacement)	13.95 CFM / 395 L/Min
	Voltage	400 V / 50 Hz
	Supply	10
	FLC	6
	Pump	B38B PRO (370001B)
	dB(A)	77
	Dimensions L x W x H (unit)	1390 x 430 x 950 mm

	Dimensions L x W x H (boxed)	1400 x 440 x 960 mm
	Weight	103 kgs
	Motor Speed	2850 RPM
	Oil Capacity	1 Ltr
	Receiver Size	200 Ltr
	Head Bolt Torque	27 Nm
	Cable Length	2 Mtr
	Pump Speed	1250 RPM
	Outlet Thread Size	Series 25 Coupling



E & OE  
Images shown are for illustration and may vary from the actual product

Unit 5, Tower Estate,  
Warpsgrove Lane,  
Chalgrove,  
Oxon,  
OX44 7XZ

Tel: +44(0)1865 892620  
Fax: +44(0)1844 390955  
sales@fps-compressors.co.uk  
www.fps-compressors.co.uk

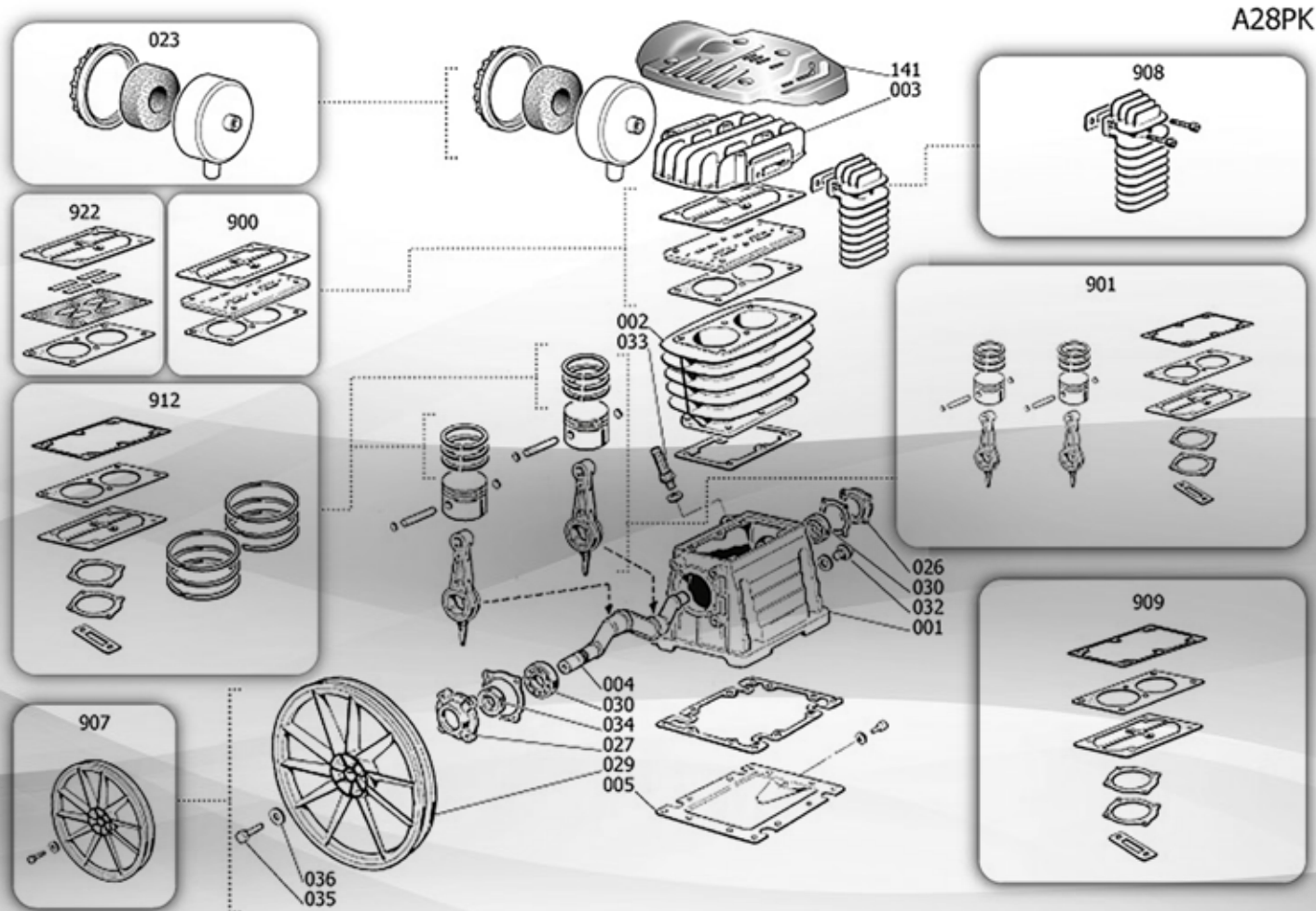


DATA SHEET

# B38B PRO PUMP

370001B

B3800B-PRO/200 FT3 (S-36LN54|FPSI43)



## COMPONENTS (see drawing above)

Position	Part No.	Description
2	S-9428042	Cylinder
3	S-3860410	Head
23	S-9434M04	Air Filter Kit
900	S-9434A66	Valve Plate
901	S-9434B82	Piston & Con Rod Compl
912	S-9434C09	Piston Ring Kit

## OTHER SERVICE PARTS

Part No.	Description
S-PK-B28.B38/PRO	Service Kit
S-9602024	NRV Pastel
S-9602018	NRV Spring
S-9048009	NRV
S-9063147	Pressure Switch
LUB-PIST-ILT	Lubricant
S-9075001	Belt



E & OE  
Images shown are for illustration and may vary from the actual product

Unit 5, Tower Estate,  
Warpsgrove Lane,  
Chalgrove,  
Oxon,  
OX44 7XZ

Tel: +44(0)1865 892620  
Fax: +44(0)1844 390955

sales@fps-compressors.co.uk  
www.fps-compressors.co.uk

