

DATA SHEET

FI-24I TECH

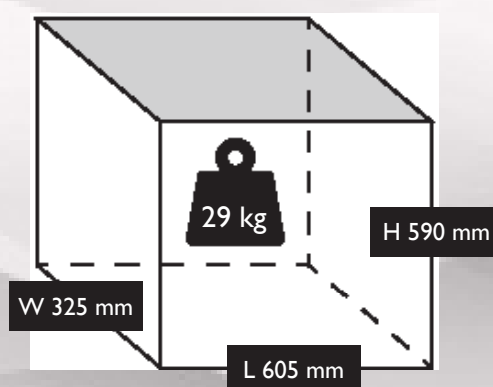
S-6SCA404FPS506



UNIT DIMENSIONS



PACKAGE DIMENSIONS



TECHNICAL DATA

	Max. Pressure	10 Bar / 145 PSI
	Power	2HP / 1.5kW
	Capacity (displacement)	8.5 CFM / 240 L/Min
	Voltage	230V / 50 Hz
	Supply	13 Amp Plug
	FLC	10A
	Pump	FI 24I (S-6500000)
	dB(A)	76
	Dimensions L x W x H (unit)	595 x 315 x 580 mm

	Dimensions L x W x H (boxed)	605 x 325 x 590 mm
	Weight	29 kgs
	Motor Speed	2880 RPM
	Oil Capacity	0.5 Ltr
	Receiver Size	24 Ltr
	Head Bolt Torque	11 Nm
	Cable Length	2 Mtr
	Pump Speed	2880 RPM
	Outlet Thread Size	Series 25 Coupling



E & OE
Images shown are for illustration and may vary from the actual product

Unit 5, Tower Estate,
Warpsgrove Lane,
Chalgrove,
Oxon,
OX44 7XZ

Tel: +44(0)1865 892620
Fax: +44(0)1844 390955

sales@fps-compressors.co.uk
www.fps-compressors.co.uk

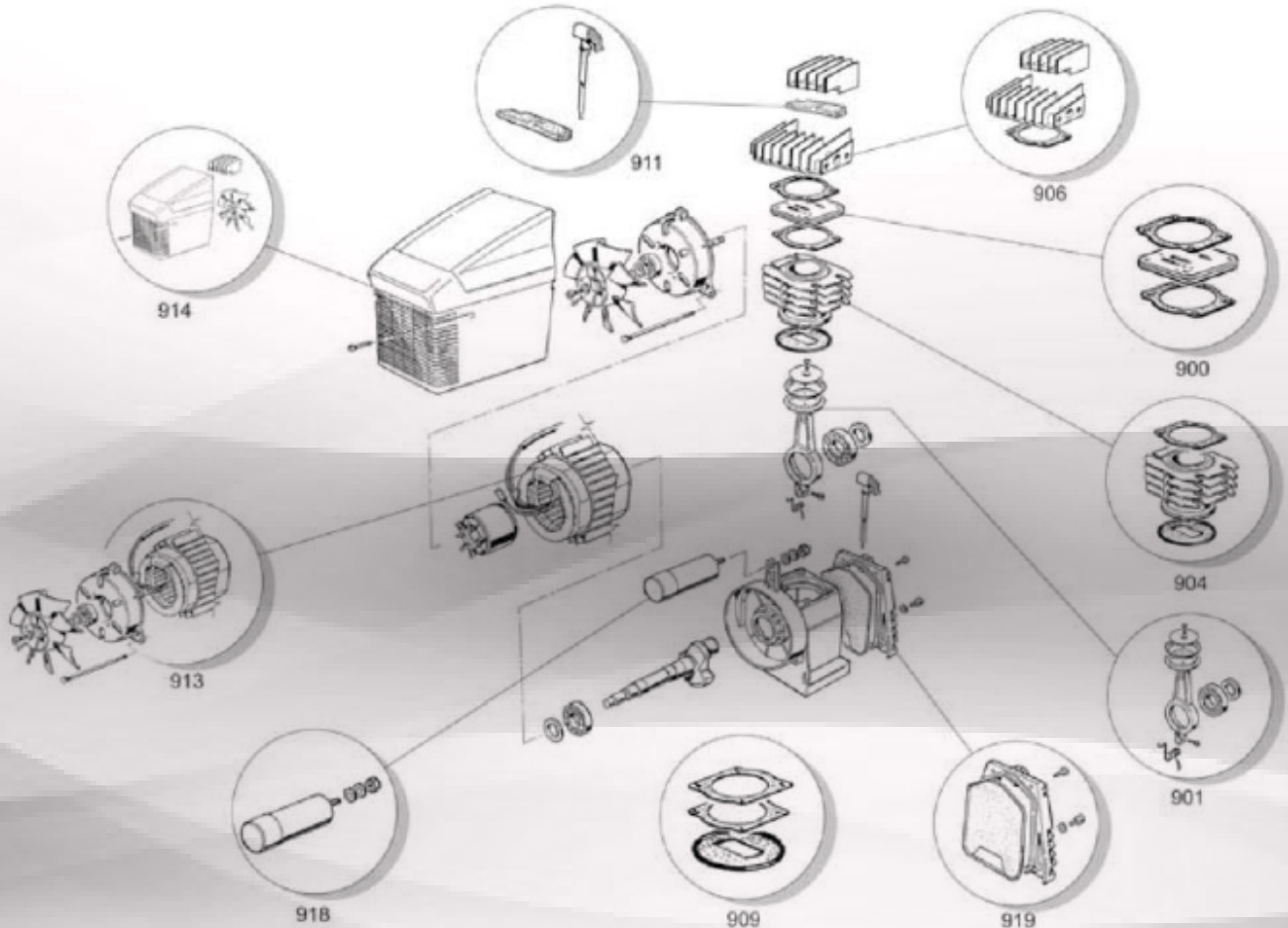


DATA SHEET

FI 24I PUMP

S-6500000

FI-24I TECH (S-6SCA404FPS506)



COMPONENTS (see drawing above)

Position	Part No.	Description
900	S-9432001	Valve Plate
901	S-9432011	Piston & Con Rod Compl
904	S-9432041	Cylinder Kit
906	S-9432066	Head Kit
909	S-9432091	Gasket Kit
911	S-9432114	Air Filter Kit
913	S-9432136	Stator Kit
914	S-9432147	Conveyor Kit

OTHER SERVICE PARTS

Part No.	Description
S-PK-FI24I	Service Kit
S-9602015	NRV Pastel
S-9602018	NRV Spring
S-9048065	NRV
S-9063084	Pressure Switch
LUB-PIST-ILT	Lubricant
S-9429180	Capacitor (motor)



E & OE
Images shown are for illustration and may vary from the actual product

Unit 5, Tower Estate,
Warpsgrove Lane,
Chalgrove,
Oxon,
OX44 7XZ

Tel: +44(0)1865 892620
Fax: +44(0)1844 390955

sales@fps-compressors.co.uk
www.fps-compressors.co.uk

