

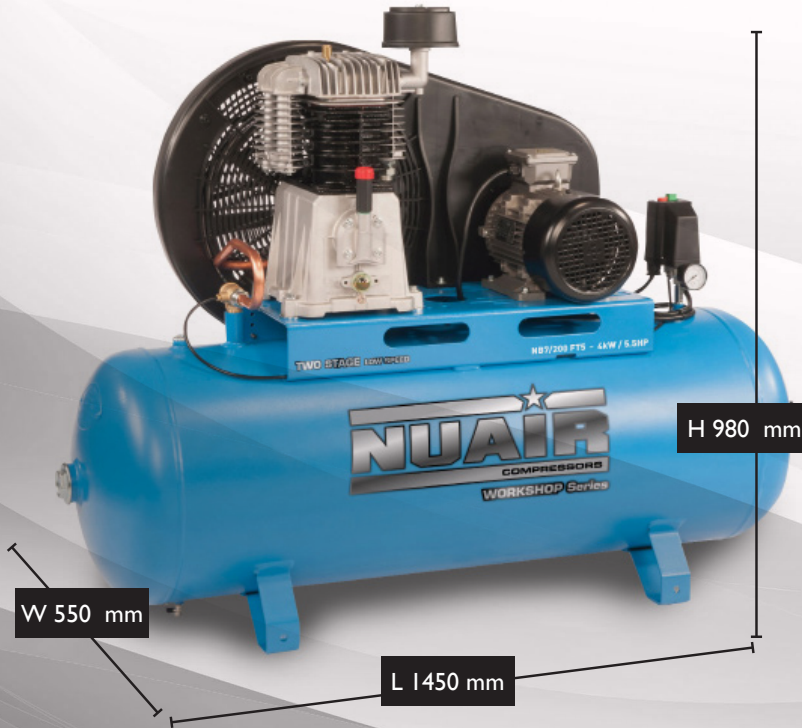
DATA SHEET

NB7/200 FT5

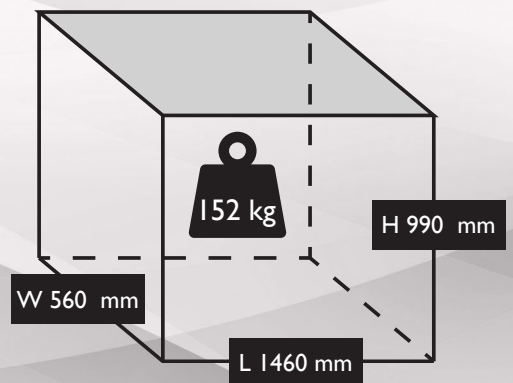
S-N7LN701FPS044



UNIT DIMENSIONS



PACKAGE DIMENSIONS



TECHNICAL DATA

	Max. Pressure	10 Bar / 145 PSI
	Power	5.0 HP / 4.0 kW
	Capacity (displacement)	24 CFM / 680 L/Min
	Voltage	400V / 50 Hz
	Supply	16
	FLC	10
	Pump	NB7 (S-N70000A)
	dB(A)	
	Dimensions L x W x H (unit)	1450 x 550 x 980 mm

	Dimensions L x W x H (boxed)	1460 x 560 x 990 mm
	Weight	152 Kgs
	Motor Speed	2850 RPM
	Oil Capacity	2 Ltr
	Receiver Size	200 Ltr
	Head Bolt Torque	45 Nm
	Cable Length	2 Mtr
	Pump Speed	920 RPM
	Outlet Thread Size	1/2" BSP



E & OE
Images shown are for illustration and may vary from the actual product

Unit 5, Tower Estate,
Warpsgrove Lane,
Chalgrove,
Oxon,
OX44 7XZ

Tel: +44(0)1865 892620
Fax: +44(0)1844 390955

sales@fps-compressors.co.uk
www.fps-compressors.co.uk

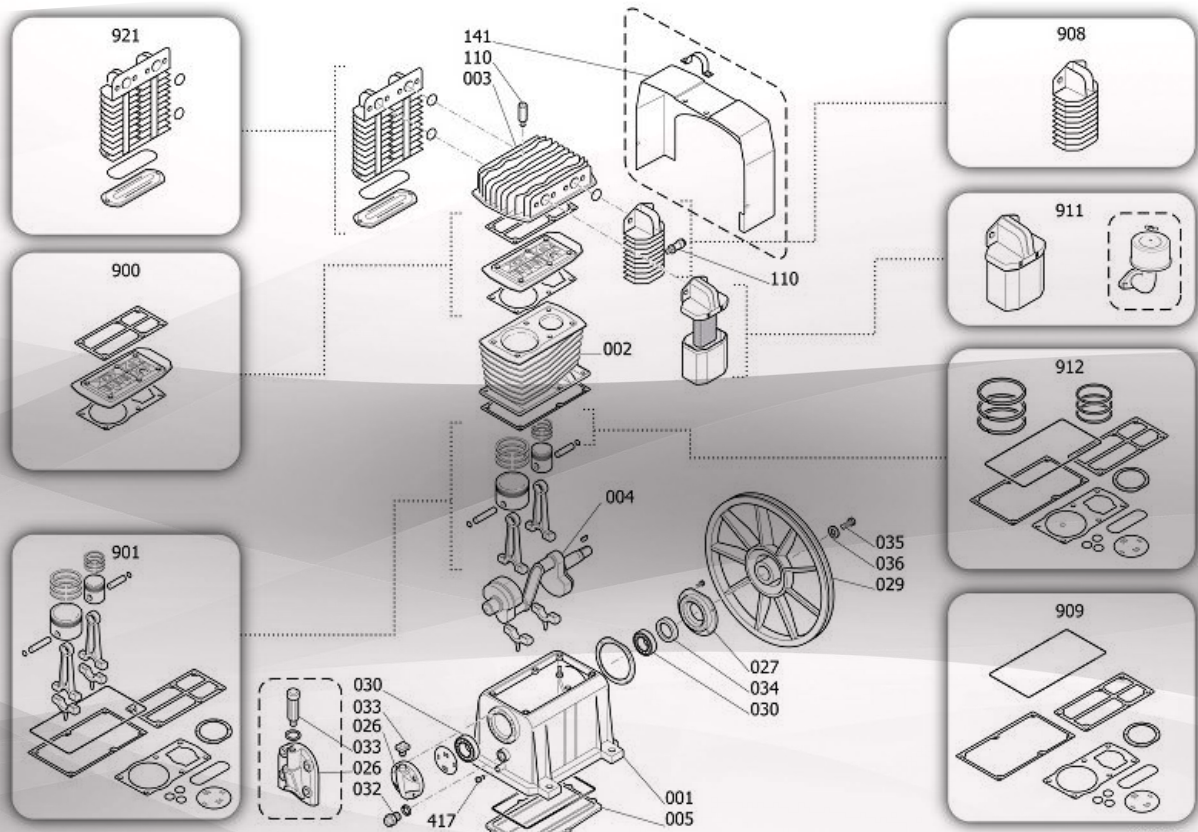
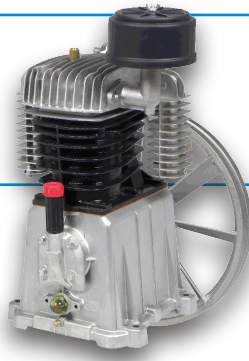


DATA SHEET

NB7 PUMP

S-N70000A

NB7/200 FT5 (S-N7LN701FPS044)



COMPONENTS (see drawing above)

Position	Part No.	Description
2	S-BR30000	Cylinder
3	F-113178002	Head
900	S-9434A27	Valve Plate
901	S-9434B30	Piston & Conrod kit
909	S-9434F27	Gasket Kit
911	S-9420936	Air Filter Kit

OTHER SERVICE PARTS

Part No.	Description
S-PK-NB7	Service Kit
S-4101335	NRV
S-9063148	Pressure Switch
LUB-PIST-ILT	Lubricant
N/A	Capacitor (motor)
S-4106414	V Belt



E & OE
Images shown are for illustration and may vary from the actual product

Unit 5, Tower Estate,
Warpsgrove Lane,
Chalgrove,
Oxon,
OX44 7XZ

Tel: +44(0)1865 892620
Fax: +44(0)1844 390955

sales@fps-compressors.co.uk
www.fps-compressors.co.uk

