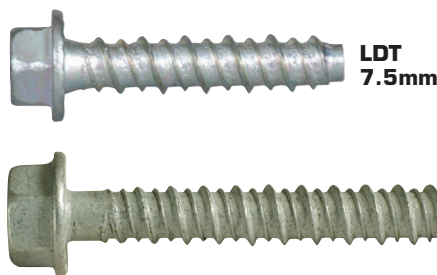
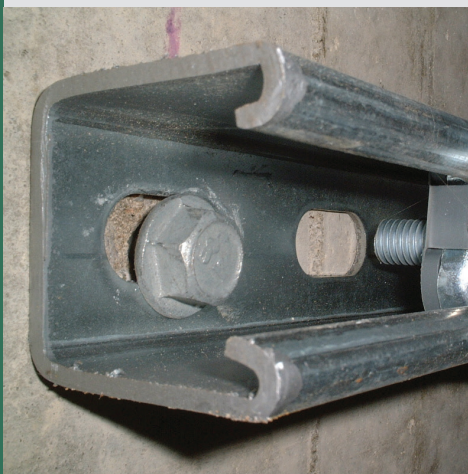


Spit Tapcon® LDT (Large Diameter Tapcon®)

A high performance, concrete anchor that cuts its own threads. Significantly reduces the installation time for service channel and bracketry, providing a secure fixing that can easily be removed when necessary.



LDT 7.5mm ONLY

FIRE TESTED
bre fire tested

UNDERGROUND

Transport for London Underground authorised for use. Refer to pages 10 - 11.



Features and Advantages

- **Smaller drill hole than traditional anchors** - e.g. it requires a 8mm hole for a 10mm anchor
- **Anchor is set as it is inserted** - Saves time and reduces risk of incorrect setting
- **No expansion stress** - Can be installed close to edge or other anchors
- **Wide range of sizes, from 35mm to 152mm** - Range includes short lengths for avoiding re-bar

Tapcon® LDT
Head Style: Hex Head with length indicator

Large Flange
14mm flange on LDT 7.5mm
20mm flange on LDT 10mm
22mm flange on LDT 12mm
No need for separate washer.

Anti-slip serrations
Located under head to grip part to be fixed

10 / 12mm mechanically galvanised - For improved corrosion resistance.

Technical Specification

Diameter: 7.5/10/12mm
Thread form: Reversed Hi-Lo®*
Point type: Chamfered Tip
Finish: M10 and M12 only - Meets ASTM B695 specifications for zinc plating of 5µm, mechanically zinc plated.

* High thread ensure maximum holding power, with low profile to aid spoil removal.

Applications

Electricians / Plumbers:

- Channel/support system bracketry

Carpenters:

- Timber battening to concrete, brick, blockwork, sole plates, joist hangers

Pallet Racking, Stadium Seating

Temporary Site Applications:

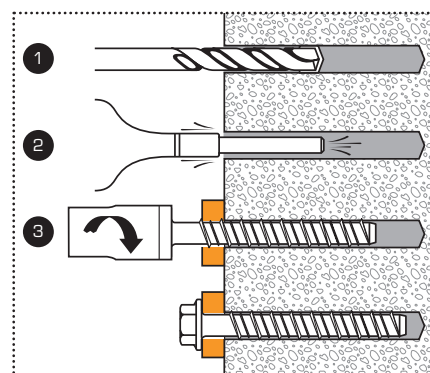
- Guard rails across window voids / lift shafts, push/pull bars

Steel Erectors:

- Base plates, steel shutters/ roller doors

Installation

1. Drill pilot hole Ø 6mm (for 7.5mm LDT), 8mm (for 10mm LDT) and 11mm (for 12mm LDT), 10mm deeper than anchor embedment.
2. Remove debris from the hole. Drilling the extra depth will allow for the mechanics of the anchor, therefore hole cleaning is not as important, but is advised.
3. Insert head of LDT into an impact socket or nut setter as follows:
For 7.5mm use 10mm impact socket or nut setter
For 10mm use 1/2" impact socket
For 12mm use 3/4" impact socket
 Using an electric impact wrench insert LDT anchor into hole and tighten until anchor is fully seated.



TIP

For fastest installation use the Spit IW1 285 Impact Wrench with Impact Sockets. (Refer to page 106).

Substrates

- Concrete
- Masonry
- Pre-cast concrete beams

ALSO AVAILABLE

Available in bag packaging:

Refer to page 180 for further details



Installation Steps for Hollow Block

1. Using 8mm (for 10mm LDT) and 11mm (for 12mm LDT) carbide tipped bit.
2. Remove debris, ensuring hole is 10mm deeper than anchor embedment.
3. Using a socket wrench (hand install), insert anchor into hole and tighten anchor until fully seated.

Tapcon® LDT 7.5mm



Eurocode	Thread Diameter	Hole Diameter	Across Flats (A/F)	Max Fixture Thickness	Anchor Length	Min Hole Depth	Min Embed	Flange Diameter	Box Qty
O16670	7.5mm	6mm	10mm	2mm	35mm	43mm	33mm	14mm	100
O16671	7.5mm	6mm	10mm	12mm	45mm	43mm	33mm	14mm	100
O16672	7.5mm	6mm	10mm	27mm	60mm	43mm	33mm	14mm	100
O16673	7.5mm	6mm	10mm	47mm	80mm	43mm	33mm	14mm	50
O16674	7.5mm	6mm	10mm	67mm	100mm	43mm	33mm	14mm	50

Tapcon® LDT 10mm and 12mm Zinc Plated 5µm



Eurocode	Thread Diameter	Hole Diameter	Across Flats (A/F)	Max Fixture Thickness	Anchor Length	Min Hole Depth	Min Embed	Flange Diameter	Box Qty
921372	10mm	8mm	1/2"	7mm	45mm	48mm	38mm	20mm	50
921419	10mm	8mm	1/2"	26mm	64mm	48mm	38mm	20mm	50
921373	10mm	8mm	1/2"	38mm	76mm	48mm	38mm	20mm	50
921420	10mm	8mm	1/2"	63mm	101mm	48mm	38mm	20mm	50
921421	10mm	8mm	1/2"	90mm	128mm	48mm	38mm	20mm	50
921422	12mm	11mm	3/4"	25mm	76mm	61mm	51mm	22mm	25
921423	12mm	11mm	3/4"	50mm	101mm	61mm	51mm	22mm	25
921424	12mm	11mm	3/4"	76mm	127mm	61mm	51mm	22mm	25
921425	12mm	11mm	3/4"	101mm	152mm	61mm	51mm	22mm	25
923161	16mm	13mm	13/16"	82mm	152mm	80mm	70mm	28mm	10

Accessories: Refer to pages 194 - 195 for the full range of Tapcon® Accessories

Eurocode	Description	Qty
Accessories for Tapcon LDT 7.5mm:		
921437	Condrive Sleeve for SDS	1
921846	10mm Hex Magnetic Nut Setter (1/4" Hex Drive) for 7.5mm LDT	1
923255	10mm Hex Impact Socket (1/2" Square Drive) for 7.5mm LDT	1
O54237	Impact Wrench 1/4" Adaptor (38mm Long)	1
920940	SDS+ 6mm x 180mm Tapcon Drill Bit	1
Accessories for Tapcon LDT 10mm and 12mm only:		
923261	1/2" Hex Impact Socket for 10mm LDT	1
923258	3/4" Hex Impact Socket for 12mm LDT	1
921556	Socket Driver 12.5mm SDS for use with LDT Sockets	1