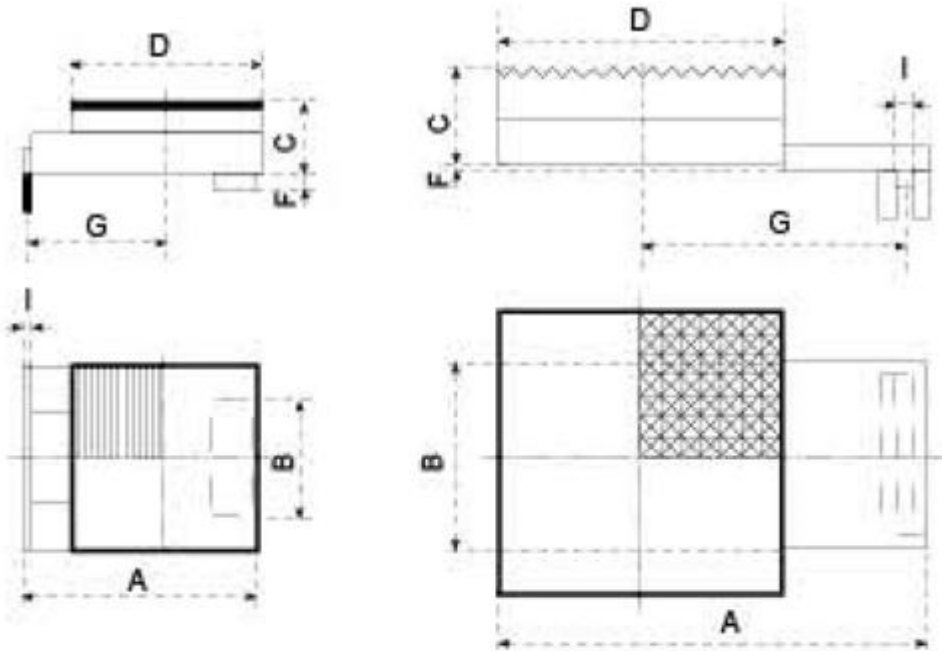


# PC SERIES PACKING PLATES FOR RS-SERIES MACHINERY SKATES



Packing Plates are used to compensate for the height differences on RS Roller skates when other skates have a TR series turntable.

They are fitted with a rubber top to help reduce marking of the machinery.

## PACKING PLATES FOR RS SERIES ROLLER SKATES

MODEL	Dimensions							Weight (kg)
	A	B	C	D	F	G	I	
PC10	153	74	37	120	8	88	5	3.7
PC20	153	86	37	120	8	88	5	3.7
PC30	175	95	45	130	8	105	5	5.3
PC40	270	114	61	180	3	165	11	13.8
PC50	350	128	61	200	3	235	11	18.8

