

# RS Series Machinery Roller Skates



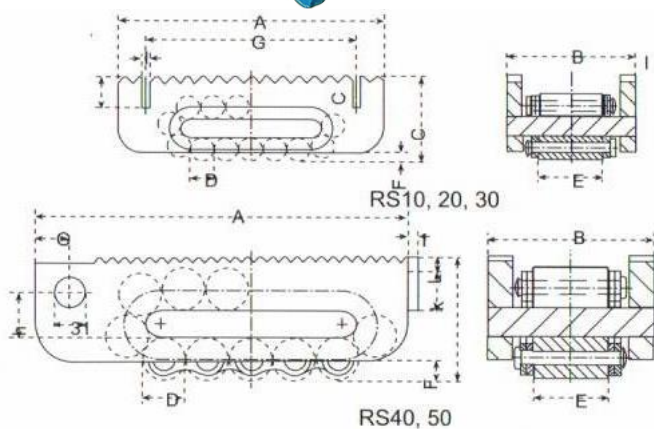
The RS Series of Roller Skates are stable, rugged and with a low level construction.

All maximum carrying capacities shown are based for use on a steel surface, which withstands the high pressure of the chain rollers.

The movement on tarmac and concrete is restricted - In these cases a steel plate of at least 10mm thickness is recommend.

Movement speed should not exceed 5/min.

Can be used in conjunction with TR series Turn Tables



| Model | Dimension A (mm) | Dimension B (mm) | Dimension C (mm) | Dimension D (mm) | Dimension E (mm) | Dimension F (mm) | Dimension G (mm) | Dimension H (mm) | Dimension I (mm) | Dimension K (mm) | Dimension L (mm) | Rollers under stress | Dimension L (mm) | Capacity (tonne) | Weight (kg) |
|-------|------------------|------------------|------------------|------------------|------------------|------------------|------------------|------------------|------------------|------------------|------------------|----------------------|------------------|------------------|-------------|
| RS10  | 206              | 100              | 67               | 18               | 51               | 7                | 166              | -                | 8                | 26               | -                | 5                    | 15               | 10               | 5.2         |
| RS20  | 216              | 112              | 74               | 24               | 58               | 11               | 178              | -                | 8                | 26               | -                | 4                    | 13               | 15               | 7.3         |
| RS30  | 268              | 127              | 91               | 30               | 66               | 13               | 218              | -                | 8                | 26               | -                | 4                    | 13               | 30               | 13          |
| RS40  | 380              | 168              | 125              | 42               | 76               | 16               | 36               | 48               | 10               | 40               | 15               | 4                    | 13               | 60               | 32          |
| RS50  | 530              | 182              | 145              | 50               | 86               | 19               | 36               | 60               | 10               | 40               | 15               | 6                    | 17               | 80               | 61          |