

# Clanube®



## 1.8 TONNE ALUMINIUM RACING JACK

MODEL NO: CTJ1800A

PART NO: 7623200

### OPERATION & MAINTENANCE INSTRUCTIONS



LS1215

---

## **INTRODUCTION**

---

Thank you for purchasing this CLARKE 1.8 Tonne aluminium racing jack.

Before attempting to use this product, please read this manual thoroughly and follow the instructions carefully. In doing so you will ensure the safety of yourself and that of others around you, and you can look forward to your purchase giving you long and satisfactory service.

---

## **GUARANTEE**

---

This product is guaranteed against faulty manufacture for a period of 12 months from the date of purchase. Please keep your receipt which will be required as proof of purchase.

This guarantee is invalid if the product is found to have been abused or tampered with in any way, or not used for the purpose for which it was intended.

Faulty goods should be returned to their place of purchase, no product can be returned to us without prior permission.

This guarantee does not effect your statutory rights.

---

## **SAFETY PRECAUTIONS**

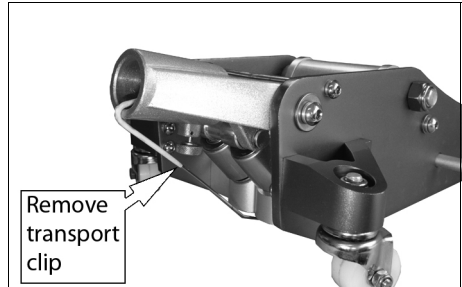
---

1. Read Instruction manual before use
2. NEVER exceed the rated load for the jack See "Specifications" on page 7. Overloading can cause the Jack to fall resulting In personal Injury
3. Always inspect the jack before use. Make sure that all parts are in good condition and operating smoothly, and that no cracks or distortion is apparent. If in doubt do not use. Have the damaged parts replaced or consult your CLARKE dealer.
4. Make sure that the jack is on a hard level surface, and there is no possibility of it slipping when under load.
5. Make sure the load is taken by the full saddle and that the lifting point on the load, is of sufficient strength to support the weight.
6. Always use axle stands to stabilise the load once lifted.
7. NEVER work on or under a load unless it is fully and adequately supported. NEVER rely upon the jack to hold the load in position.
8. Never push a load off the jack.
9. Ensure that all personnel are well clear of a load being raised or lowered.
10. Do not use if an oil leak is apparent. Consult your Clarke dealer.
11. Consult the vehicle handbook to determine the correct lifting points.
12. Take care not to trap fingers within the moving parts.
13. Ensure the load is chocked and the handbrake applied before lifting.
14. Use only as a lifting device, do not use as a dolly to move a load.

# BEFORE USE

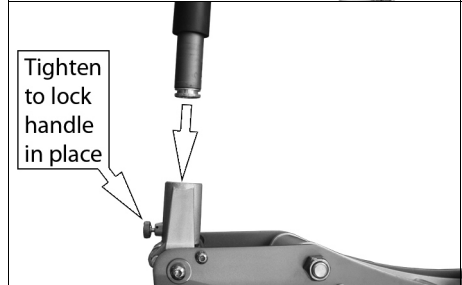
## ASSEMBLY

1. Remove the transport clip.



2. Insert the lower half of the jack handle into position as shown.

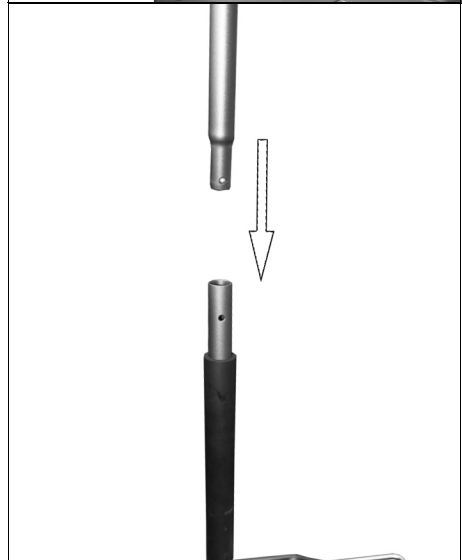
- Make sure that the square bar inside the handle yoke engages with the hole in the jack handle.



3. Secure the handle by tightening the bolt shown.

4. Fit the upper jack handle to the lower jack handle as shown.

- Make sure that the ball clip engages with the hole in the lower jack handle.



---

# OPERATION

---

## POSITIONING

Ensure the vehicle is chocked and stable and on firm level ground.

1. Turn the jack handle counterclockwise, to lower the lifting ram.
2. Position the jack so that the saddle is directly beneath the lifting point and that there are no obstacles to prevent a clean lift, also, make sure that all personnel are well away from the area, before raising the vehicle.

## TO LIFT

1. Close the release valve by turning the jack handle clockwise firmly.
2. Operate the jack by pumping the jack handle.
  - Make sure that the saddle is in full contact with the vehicle lifting point and that there are no obstacles to prevent a clean lift.
3. Place axle stands beneath the vehicle.
  - Make sure that the axle stands are centred under the vehicle support points and are perfectly stable before full weight is taken.
  - Make sure that that the axle stands are in good condition and capable of supporting the load.
  - Make sure that the axle stands cannot move when supporting the load and that they are on a firm level surface.
  - DO NOT jerk the handle, ensure it lowers slowly and under complete control on to the axle stands which must be correctly positioned and take the weight evenly.

## TO LOWER

1. Lift the vehicle slightly to remove the weight from any supports.
2. Remove any supports from beneath the vehicle.
3. Slowly turn the jack handle counterclockwise to open the release valve.

**NOTE:** make sure that this operation is carried out under complete control. Do not allow the load to drop suddenly as this could damage internal components.

4. Remove the jack from beneath the vehicle.

**NOTE:** The jack may move slightly during operation. It is therefore important that the immediate vicinity is clean and completely free from clutter.

---

# MAINTENANCE

---

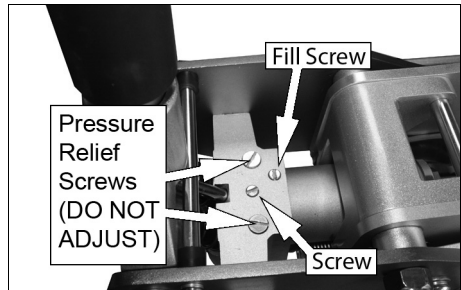
1. When the jack is not in use, keep the saddle lowered and the release valve closed (jack handle turned fully clockwise).
2. Keep the jack clean and apply lubricating oil to all pivoting sections every three months, or more often when it is used in a dusty work environment.
3. Check the pump piston and piston rod periodically for signs of rust or corrosion. Clean exposed area with clean oiled cloth.
4. Change the oil once a year or as required, See page 7.

## STORAGE

Store in a dry place, with the ram fully retracted. If stored for long periods, inspect at least once a year, clean and re-oil. For servicing, contact your CLARKE dealer, or CLARKE International Service Department.

## BLEEDING THE HYDRAULIC SYSTEM

1. Put the jack on horizontal ground.
2. Open the release valve by SLOWLY turning the jack handle counterclockwise and then pump the handle up and down several times.
3. Loosen the fill screw.
4. Pump the jack handle up and down slowly several times to purge the air from the hydraulic system.
5. Tighten the fill screw.



**WARNING: DO NOT ADJUST THE PRESSURE RELIEF SCREWS UNDER ANY CIRCUMSTANCES**

---

## TOPPING UP OR CHANGING THE OIL

1. Lower the saddle as far as possible.
2. Remove the fill screw and screw shown on the right.
3. Turn the jack over and drain the oil into a suitable container.

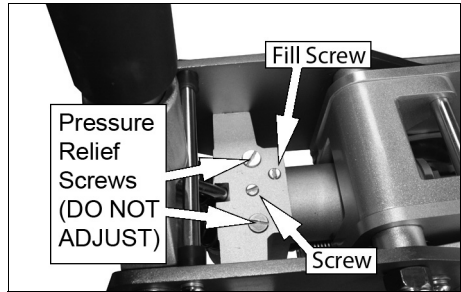
- Dispose of the oil in accordance with local regulations.

4. Fill with Clarke hydraulic oil into the fill screw hole slowly until the oil reaches the bottom of the thread in the oil fill hole.

- Clarke Hydraulic oil is available from your local Clarke dealer.

**NOTE:** Do not touch the assembled handle when adding the hydraulic oil.

5. Replace the screw and fill screw.



---

## SPECIFICATIONS

---

Model number	CTJ1800A
Part number	7623200
Length (not including handle)	640 mm
Width (not including wheels)	300 mm
Height	230 mm
Height of saddle (minimum)	85 mm
Height of saddle (maximum)	465 mm
Weight	19 kg
Rated Load	1.8 tonne

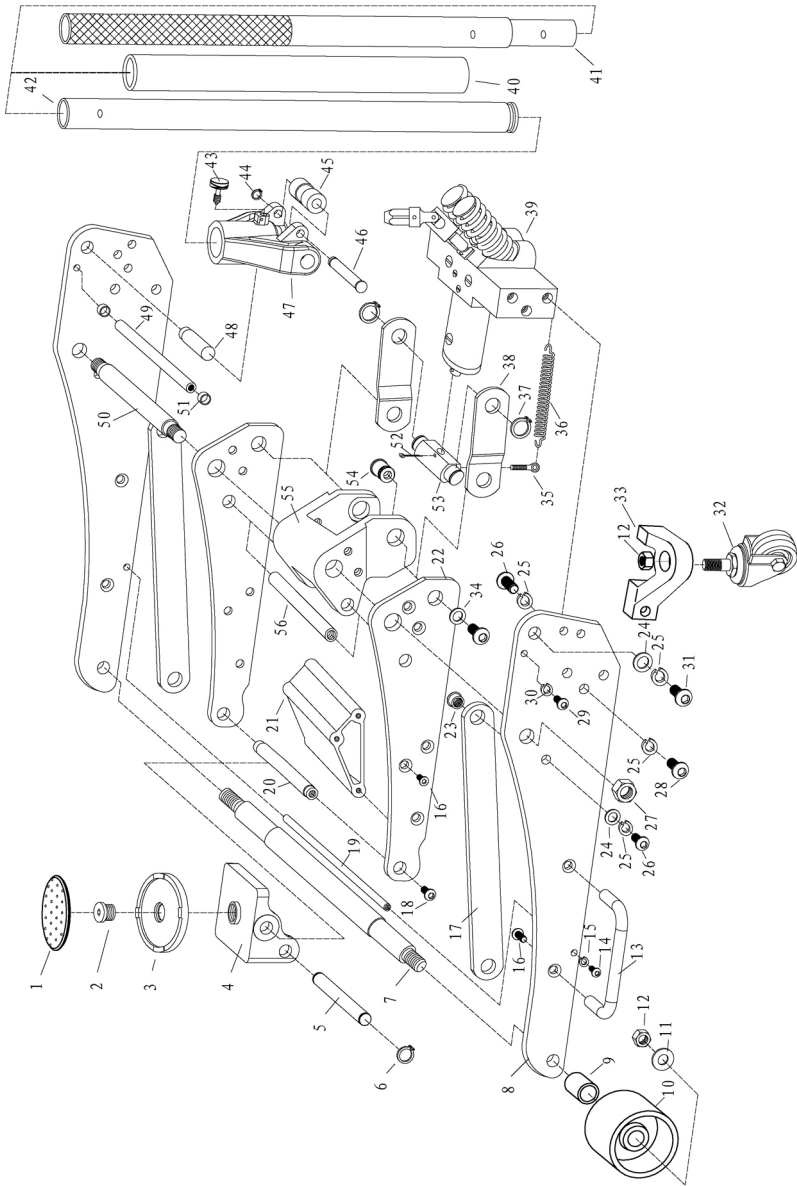
# TROUBLESHOOTING

PROBLEM	CAUSE	SOLUTION
Jack will not lift the rated load	Low oil level	See "Topping up or Changing the oil" on page 7.
	Release valve not closed	Turn the jacking handle fully clockwise
Jack lowers when under load	Release valve not closed	Turn the jacking handle fully clockwise
	Air in the hydraulic system	Bleed the system. See page 6
Pump feels spongy	Low oil level	See "Topping up or Changing the oil" on page 7.
	Air in the hydraulic system	Bleed the system. See page 6
Handle raises or flies back under load	Air in the hydraulic system	Bleed the system. See page 6
Jack will not lift full height	Low oil level	See "Topping up or Changing the oil" on page 7.
	Air in the hydraulic system	Bleed the system. See page 6

If any of these remedies fail to restore your jack, consult your Clarke dealer.



# EXPLODED DIAGRAM AND PARTS LIST



N O	DESCRIPTION	PART NO
1	Saddle Pad	HACTJ1800A01
2	Saddle Screw	HACTJ1800A02
3	Saddle	HACTJ1800A03
4	Saddle Base	HACTJ1800A04
5	Pin	HACTJ1800A05
6	Retaining Ring	HACTJ1800A06
7	Axle	HACTJ1800A07
8	Side Plate	HACTJ1800A08
9	Front Wheel Bushing	HACTJ1800A09
10	Front Wheel	HACTJ1800A10
11	Front Wheel Washer	HACTJ1800A11
12	Nut	HACTJ1800A12
13	Side Carrying Handle	HACTJ1800A13
14	Screw	HACTJ1800A14
15	Washer	HACTJ1800A15
16	Screw	HACTJ1800A16
17	Support Pivot Bar	HACTJ1800A17
18	Screw	HACTJ1800A18
19	Arm Stop Bar	HACTJ1800A19
20	Saddle Base Pin	HACTJ1800A20
21	Spacer	HACTJ1800A21
22	Arm Side Plate	HACTJ1800A22
23	Screw	HACTJ1800A23
24	Washer	HACTJ1800A24
25	Split Washer	HACTJ1800A25
26	Screw	HACTJ1800A26
27	Nut	HACTJ1800A27

N O	DESCRIPTION	PART NO
28	Screw M10X35	HACTJ1800A28
29	Screw	HACTJ1800A29
30	Washer	HACTJ1800A30
31	Screw	HACTJ1800A31
32	Rear Caster	HACTJ1800A32
33	Rear Caster Base	HACTJ1800A33
34	Washer	HACTJ1800A34
35	Spring Clip	HACTJ1800A35
36	Spring	HACTJ1800A36
37	Circlip	HACTJ1800A37
38	Trunion Arm	HACTJ1800A38
39	Hydraulic Unit	HACTJ1800A39
40	Handle Sleeve	HACTJ1800A40
41	Handle, Upper	HACTJ1800A41
42	Handle, Lower	HACTJ1800A42
43	Handle Set Screw	HACTJ1800A43
44	Circlip	HACTJ1800A44
45	Roller	HACTJ1800A45
46	Roller Pin	HACTJ1800A46
47	Handle Yoke	HACTJ1800A47
48	Handle Yoke Pin	HACTJ1800A48
49	Tie Rod	HACTJ1800A49
50	Lift Arm Pivot Rod	HACTJ1800A50
51	Rubber Bumper	HACTJ1800A51
52	Split Pin	HACTJ1800A52
53	Trunion Block	HACTJ1800A53
54	Hing Bush	HACTJ1800A54
55	Connection Block	HACTJ1800A55
56	Hinge Pin	HACTJ1800A56

# DECLARATION OF CONFORMITY



**Clarke**<sup>®</sup>  
**INTERNATIONAL**

Hemnal Street, Epping, Essex CM16 4LG

## DECLARATION OF CONFORMITY

**This is an important document and should be retained.**

**We hereby declare that this product(s) complies with the following directive(s):**

2006/42/EC      *Machinery Directive.*

**The following standards have been applied to the product(s):**

*EN 1494:2000 +A1:2008*

The technical documentation required to demonstrate that the product(s) meet(s) the requirement(s) of the aforementioned directive(s) has been compiled and is available for inspection by the relevant enforcement authorities.

The CE mark was first applied in: 2012

**Product Description:**            1.8 Tonne Aluminium trolley jack  
**Model number(s):**            CTJ1800A  
**Serial / batch Number:**        N/A  
**Date of Issue:**                01/10/2015

**Signed:**

J.A. Clarke  
Director

# A SELECTION FROM THE VAST RANGE OF

# Clarke®

## QUALITY PRODUCTS

### AIR COMPRESSORS

From DIY to industrial, Plus air tools, spray guns and accessories.

### GENERATORS

Prime duty or emergency standby for business, home and leisure.

### POWER WASHERS

Hot and cold, electric and engine driven - we have what you need

### WELDERS

Mig, Arc, Tig and Spot. From DIY to auto/industrial.

### METALWORKING

Drills, grinders and saws for DIY and professional use.

### WOODWORKING

Saws, sanders, lathes, mortisers and dust extraction.

### HYDRAULICS

Cranes, body repair kits, transmission jacks for all types of workshop use.

### WATER PUMPS

Submersible, electric and engine driven for DIY, agriculture and industry.

### POWER TOOLS

Angle grinders, cordless drill sets, saws and sanders.

### STARTERS/CHARGERS

All sizes for car and commercial use.



**PARTS & SERVICE: 0208 988 7400**

**E-mail: [Parts@clarkeinternational.com](mailto:Parts@clarkeinternational.com) or [Service@clarkeinternational.com](mailto:Service@clarkeinternational.com)**

**SALES: UK 01992 565333 or Export 00 44 (0)1992 565335**

**Clarke® INTERNATIONAL** Hemnall Street, Epping, Essex CM16 4LG  
[www.clarkeinternational.com](http://www.clarkeinternational.com)