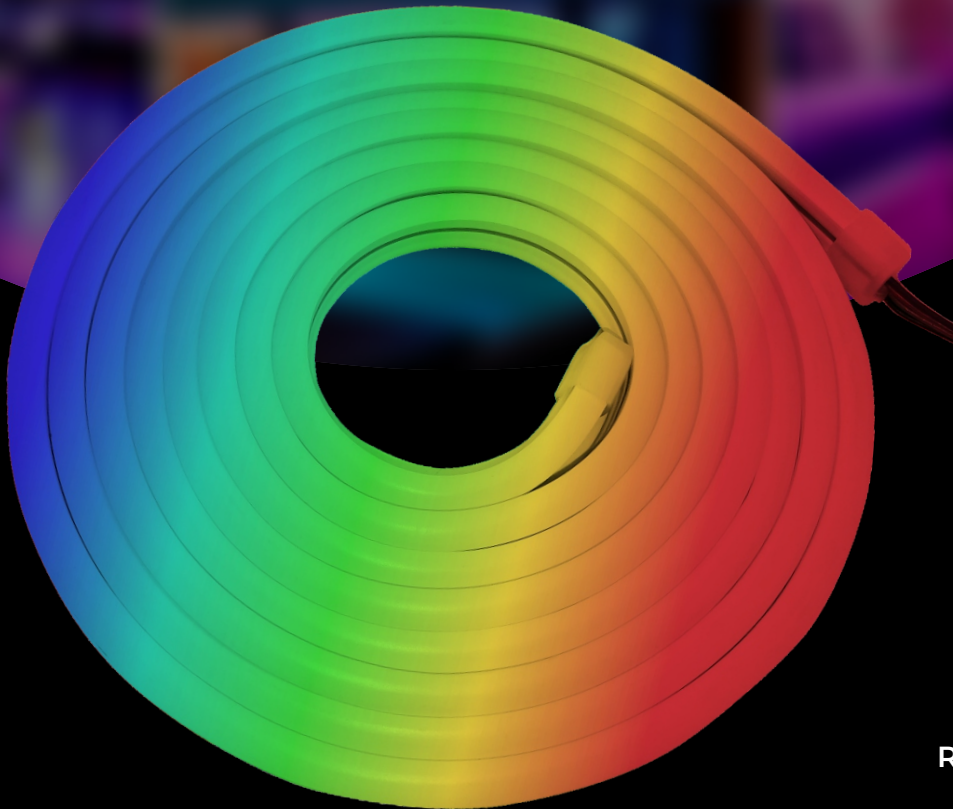


Smart Wifi LED NEON RGB STRIP KIT



RGB + W + WW

WORKS WITH



Enerjsmart App



Apple Siri



Google Home



Apple Watch



Google Assistant



Amazon Alexa



Illuminate your space by using these LED Neon RGB Strip Lights for your bedroom in the false ceiling or under the bed. Most perfect for home decoration.

CONTROL AT YOUR FINGERTIPS

ENER-J APP CONTROL



2.4 Ghz
Wi-Fi Control



Brightness



Many Device
Connect



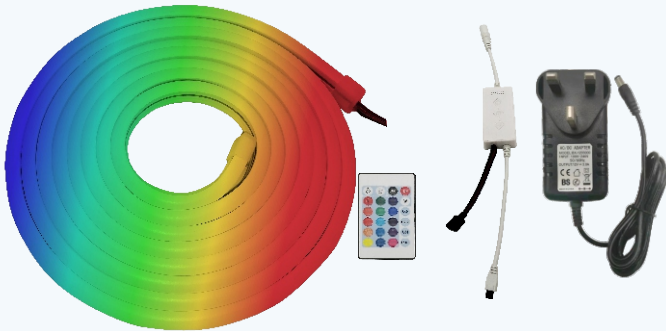
12W/m
Rated Power



Timing
Function



IP Rating



Features

Voice Activated & Alexa Echo Control: Compatible with Alexa, Google Assistant. Remote control the strip light with your phone Wirelessly. Voice Control your light by Alexa echo and Google assistant to turn on/off the light, set colours or change brightness.

Timer & Flexible: You can program schedule for different occasions, such as wake-up or bedtime mode, etc. Turn ON/OFF light as per your daily routine. Easy to bend and flexible for decor. Easy to Install and Safe to USE(12V Low Voltage).

Memory Function: With memory function, it will stay at your last setting or colour and modes when turning on again next time. No need to set light each time.

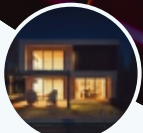
Safe and Easy to Use: Short-circuit proof, waterproof, low heat, touchable, Child Friendly.

Specifications

Model No.	: BX1203000
Colour	: RGB
Length	: 3 Meters
Size	: 16x6mm
Material	: Silicon
IP Rating	: IP65
Cutting Length	: 3.8cms
Voltage	: DC-12V
CRI	: 80
LED Chips	: 5050
LED per Meter	: 78
LED in Kit	: 216
Consumption Wattage	: 30W
Power Adapter	: 3A
Plug	: UK Plug
Qty of Clips	: 4 pcs
WIFI + IR Controller	: Yes with 24 Buttons

8 SCENE MODES

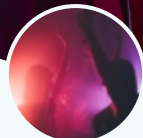
TO MEET YOUR NEEDS FOR LIGHTS



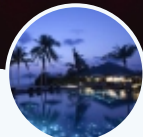
Night



Reading



Party



Leisure



Soft



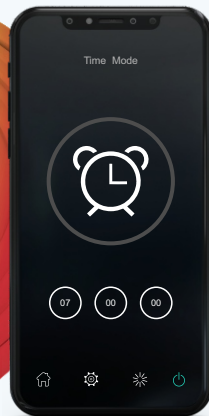
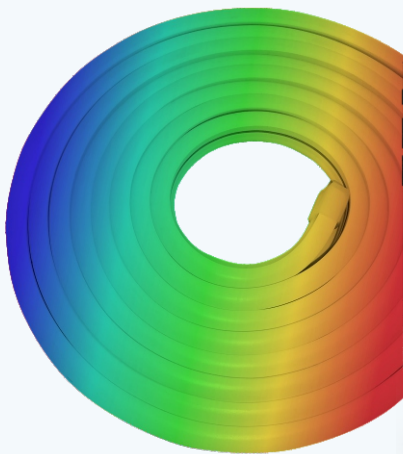
Rainbow



Shine



Gorgeous



SET TIMERS FOR YOUR CONVENIENCE



How to Install Our App



1. DOWNLOAD AND INSTALL OUR APP

Install 'ENERJSMART' in your Smartphone or Tablet devices through Google Play or iOS Play Store. Alternatively, please scan below QR code's.

2. Navigate to the app store on your mobile device.
3. Download an app called Enerjsmart.
4. Once app is downloaded, open the app and select **Register**.
5. The app should automatically detect your country code. If not, please select the country code for your country of residence.
6. Enter either your email address or phone number. (If you enter your phone number you will be sent a verification text message which you will need in the Next Step).
7. If you're setting up using a phone number, please enter the verification code that was sent to your phone and your desired password, then select **Confirm**.
8. If you're setting up using an email address please enter your desired password, and select **Confirm**.
9. You have now successfully created an account and you're now ready to start setting up your Smart Floodlight and fixtures.
10. Select the Plus (+) in the top right corner to add a device.
11. Select **Lighting devices**.
12. Connect your Smart Floodlight to a power source. To enter pairing mode, turn the Smart Floodlight on and then off for 3-5 seconds at a time. Do this 3 times. The Smart Floodlight will begin blinking rapidly once in pairing mode.
13. Connect to your desired Wi-Fi network, enter your password, then select **Confirm**.
14. If a blue box appears at the top of the screen it means you're currently not connected to a Wi-Fi network.

15. Once you select **Confirm** after entering your password, the app will start to pair the Smart Floodlight to your app.
16. If you get a message that says "Failed to Add" it means that the connection has failed. You may have to enter the Smart Floodlight into pairing mode again, and repeat steps 11 through 14. Please ensure WiFi Frequency is set to 2.4G (5G not compatible).
17. Once your Smart Floodlight successfully connects to the app, the beside screen will pop up and you can change the name of your Smart Floodlight/Device.

After naming your Smart Floodlight, select Done.
18. You're now able to control your Smart Floodlight in the Enerjsmart app.
19. Select **Profile**.

In your profile you can use:

Adjust Colour

- RGB+6500K to 3000K: You can adjust RGB colour (1600 Million colour) + 6500K (Cold white) or 3000K (Warm/
- RGB+3000K-6500K: You can adjust RGB colour (1600 Million colour) + 3000K (Warm/yellow light) to 6500K
- CCT: 3000K-6500K (Cold white to warm white).
- C/W: 6000K or 3000K (Cold white or warm white).

***RGB not available in all Smart Lighting products. Kindly check the Product Specifications for details.**

Dimming

- The lamp is dimmable, you can dim 1%-100%.

8 Modes

- Night, Read, Meeting, Leisure, Soft Light, Colourful...

20. Share with your family and friends

If you would like few people to control the same lights, then share with them.

21. Remote Control

12 million kilometers remote control. When we are still stuck with the switch to control the lights, Smart Floodlight have made it easy for you to master the lighting at home on the other side of the globe.

22. Create A Group to Control

Control each Wi-Fi Smart Floodlight individually, or together as a group.

23. Automation

Execute automatically according to conditions such as the weather, device status, and time (When the weather changes (Temperature, Humidity, Weather, PM2.5, Air quality, Sunset/sunrise, Wind speed), schedule, when the device status change).

CONTROL YOUR LIGHTS WITH YOUR VOICE



"Alexa Change to Red Lights"



Work with
Enerjsmart App



Work with
Apple Siri



Work with
Google Home



Work with
Apple Watch



Work with
Google Assistant



Work with
Amazon Alexa

Alexa Setup

If you're new to Echo, it's a super smart speaker from Amazon that responds to your voice. Once you've bought Amazon Echo and downloaded the ENERJSMART App, you'll need to enable...



1. Enable the ENERJSMART App

In your Alexa app, tap Skills in the menu and search for ENERJSMART. Tap Enable.

2. Link Account

Enter your ENERJSMART App username and password and follow the onscreen instruction.

3. Talk to Alexa

Now the fun part Ask Alexa to control your ENERJSMART device. Check a full list of things you can control by clicking here.

Google Home Setup

Now you can use Google's voice-activated speaker to control your Smart Home Sockets and adaptors. With the Google Assistant, you can turn on lights without pressing a button.

1. Setup

Start by getting the Google Home app and setting up your Google Home if you have not done this already.

2. Add ENERJSMART Action

In the Google Home app, tap the menu icon and select Home Control. Then tap the + button to see a list of Action tapping ENERJSMART to select the Action.

3. Link you ENERJSMART Account

Now follow the in-app instructions to link you ENERJSMART App account. Once complete you'll be able to say "Okey Google, turn my lamp on" or "Okay Google, set hallway to ON/OFF".



Thank you for choosing ENER-J!

Customer satisfaction is our TOP priority. Please let us know how you felt about your experience.

Happy? We are so delighted that you are pleased with our product. Feel free to express your newfound joy! Share your experience by writing a review.

Not Happy? If you are not fully satisfied with the item you received, have any problems like damages or questions, please contact us. We typically respond within 24-48 hours.

Caution

Products should be installed as per the instructions mentioned in this manual and also as per current electrical codes National Electric Code (NEC). To avoid the risk of fire, electrical shock or injury, it is advisable that the installation is done by a trained Electrician. Also it is important that mains power supply is switched off before the product is installed or repaired. It is advisable to keep the manual for future reference.

Please Note

Wi-Fi frequency is 2.4GHz and not 5GHz (5GHz not supported). You can do this by contacting your broadband service provider and requesting to either switch to 2.4GHz entirely or split it between 2.4GHz and 5GHz.

If despite following the process as instructed above, you still fail to add the device, then possibly there is a firewall on your Wi-Fi router blocking this device to be connected to your Wi-Fi Router. In such a case you would need to disable the firewall, add this device following above process and once the device is added, enable the firewalls back again.

Stuck? Confused?

Contact our Technical Support team on:

T: +44 (0)2921 252 473 | E: support@ener-j.co.uk

Lines are open Mon - Fri (8am to 4pm)