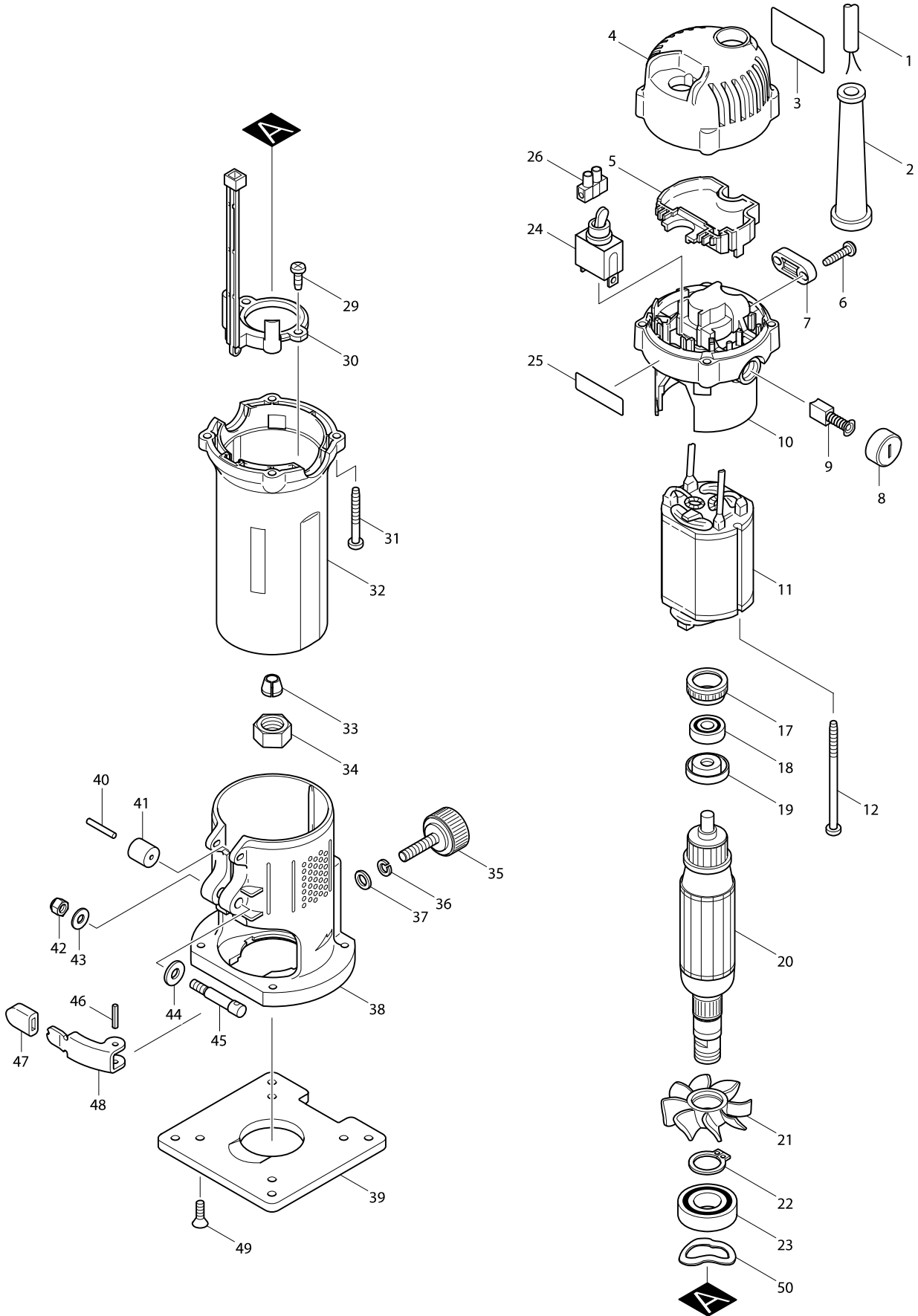


Model No. 3707 TRIMMER



Model No. 3707 TRIMMER

Item	Parts No.	Description	I/C	QTY	N/O	Opt. 1	Opt. 2	NOTE
001A	663926-3	POWER SUPPLY CORD 1.0-2-2.5		1				
001B	692021-2	POWER SUPPLY CORD 1.0-2-2.5		1		100		
002	682502-4	CORD GUARD 8-85		1		100		
003	853535-8	NAME PLATE 3707		1		100		
004	417747-3	REAR COVER		1		100		
005	687127-9	CASE		1		100		
006	265995-6	TAPPING SCREW 4X18		2		100		
007	687063-9	CORD CLAMP		1		100		
008	643928-5	BRUSH HOLDER CAP		2		100		
009	191938-1	CARBON BRUSH CB-408		1	*	100		
009-1	191940-4	CARBON BRUSH CB-411	X	1		100		
010	183417-3	MOTOR REAR HOUSING		1		100		
C10	643981-1	BRUSH HOLDER 6X9		2		100		
D10		INC. 25						
C10	654100-4	RING TERMINAL		2		100		
C20	654501-6	CONNECTOR P-1.25		2		100		
011A	595066-8	FIELD ASS'Y 115V		1		152		
011B	595069-2	FIELD ASSY 240V		1		152		
012	266004-4	TAPPING SCREW 4X70		2		100		
017	421494-0	RUBBER RING 19		1		100		
018	210017-7	BALL BEARING 607DDW		1		100		
019	681636-0	INSULATION WASHER		1		100		
D10		INC. 18,19,21,22						
020A	518552-2	ARMATURE ASS'Y 115V		1		151		
020B	517574-9	ARMATURE ASSY 240V		1		151		
021	240049-0	FAN 48		1		100		
022	961055-9	RETAINING RING S-15		1		100		
023	211236-8	BALL BEARING 6002DDW		1		100		
024	651423-1	SWITCH		1		100		
025	819720-3	MAKITA LABEL		1		100		
026	654544-8	TERMINAL BLOCK		1		100		
029	251991-0	+ TAPPING SCREW M4X12		2		100		
030	417750-4	SUPPORTER		1		100		
031	266053-1	TAPPING SCREW 4X35		4		100		
032	153347-2	MOTOR HOUSING COMPLETE		1		100		
C10	816274-1	SCALE LABEL "MM"		1		100		
033	763608-8	COLLET CONE 1/4"		1	*			
033-1	763608-8	COLLET CONE 1/4"	O	1				
034	763606-2	COLLET NUT 6		1				
035	251815-0	SCREW M6X25		1		100		
036	942151-2	SPRING WASHER 6		1		100		
037	941151-9	FLAT WASHER 6		1		100		
038	417748-1	BASE		1	*	100		
038-1	143654-1	BASE COMPLETE	<	1				
039	417749-9	BASE PROTECTOR		1		100		
040	256158-5	PIN 3		1	*	100		
040-1	256221-4	PIN 3	<	1		100		
041	421566-1	ROLLER W/O PIN		1		100		

Model No. 3707 TRIMMER

Item	Parts No.	Description	I/C	QTY	N/O	Opt. 1	Opt. 2	NOTE
042	252103-8	HEX. LOCK NUT M5-8		1		100		
043	941101-4	FLAT WASHER 5		1		100		
044	267214-6	FLAT WASHER 6		1		100		
045	324243-3	SUPPORT PIN		1		100		
046	951060-4	SPRING PIN 3-14		1		100		
047	421818-0	RUBBER CAP		1		100		
048	345229-4	LOCK LEVER		1		100		
049	912122-3	COUNTERSUNK HEAD SCREW M4X14		4		100		
050	253905-5	WAVE WASHER 23		1		100		
A01	122389-7	TRIMMER GUIDE ASS'Y		1	*			
C10	312650-2	TRIMMER GUIDE		1	*	100		
D10		INC. A02-A10			*			
A01-1	122703-7	TRIMMER GUIDE ASS'Y	O	1				
C10	317789-6	TRIMMER GUIDE		1		100		
D10		INC A02-A08,A10						
A02	251819-2	SCREW M6		1	*	100		
A02-1	265764-5	THUMB SCREW M6	O	1		100		
A03	912116-8	COUNTERSUNK HEAD SCREW M4X12		1	*	100		
A03-1	265135-6	+ COUNTERSUNK HEAD SCREW M4X12	O	1		100		
A04	341136-9	HOOK		1		100		
A05	251420-3	- FLAT HEAD SCREW M5		1	*	100		
A05-1	251471-6	- FLAT HEAD SCREW M5	O	1		100		
A06	323495-3	ROLLER 11		1	*	100		
A06-1	324378-0	ROLLER 11	O	1		100		
A07	312396-0	GUIDE HOLDER		1	*	100		
A07-1	317788-8	GUIDE HOLDER	O	1		100		
A08	941151-9	FLAT WASHER 6		1		100		
A09	253903-9	WAVE WASHER 6		1	*	100		
A10	251815-0	SCREW M6X25		1	*	100		
A10-1	265763-7	THUMB SCREW M6X25	O	1		100		
A11	251919-8	CAP SQUARE NECK BOLT M6X20		1		100		
A12	253903-9	WAVE WASHER 6		1		100		
A13	343577-5	TEMPLET GUIDE 10		1				
A14	781003-0	WRENCH 10		1				
A15	781008-0	WRENCH 17		1				
A16	934301-3	WING NUT M6		1		100		
A17	941151-9	FLAT WASHER 6		1		100		
A18	343593-7	GUIDE PLATE		1				
A19	343594-5	STRAIGHT GUIDE		1				
A20	793074-5	STRAIGHT BIT 6E		1	*			
A20-1	D-09173	STRAIGHT BITS 1/4"	O	1				
E01A	655030-2	PLUG UK TYPE 16A-4H/110V		1				
E01B	645173-8	NOISE SUPPRESSOR		1		100		
E02A	654091-9	NON-INSULATED TERMINAL1.25-2AF		2		100		
E03A	645173-8	NOISE SUPPRESSOR		1		100		