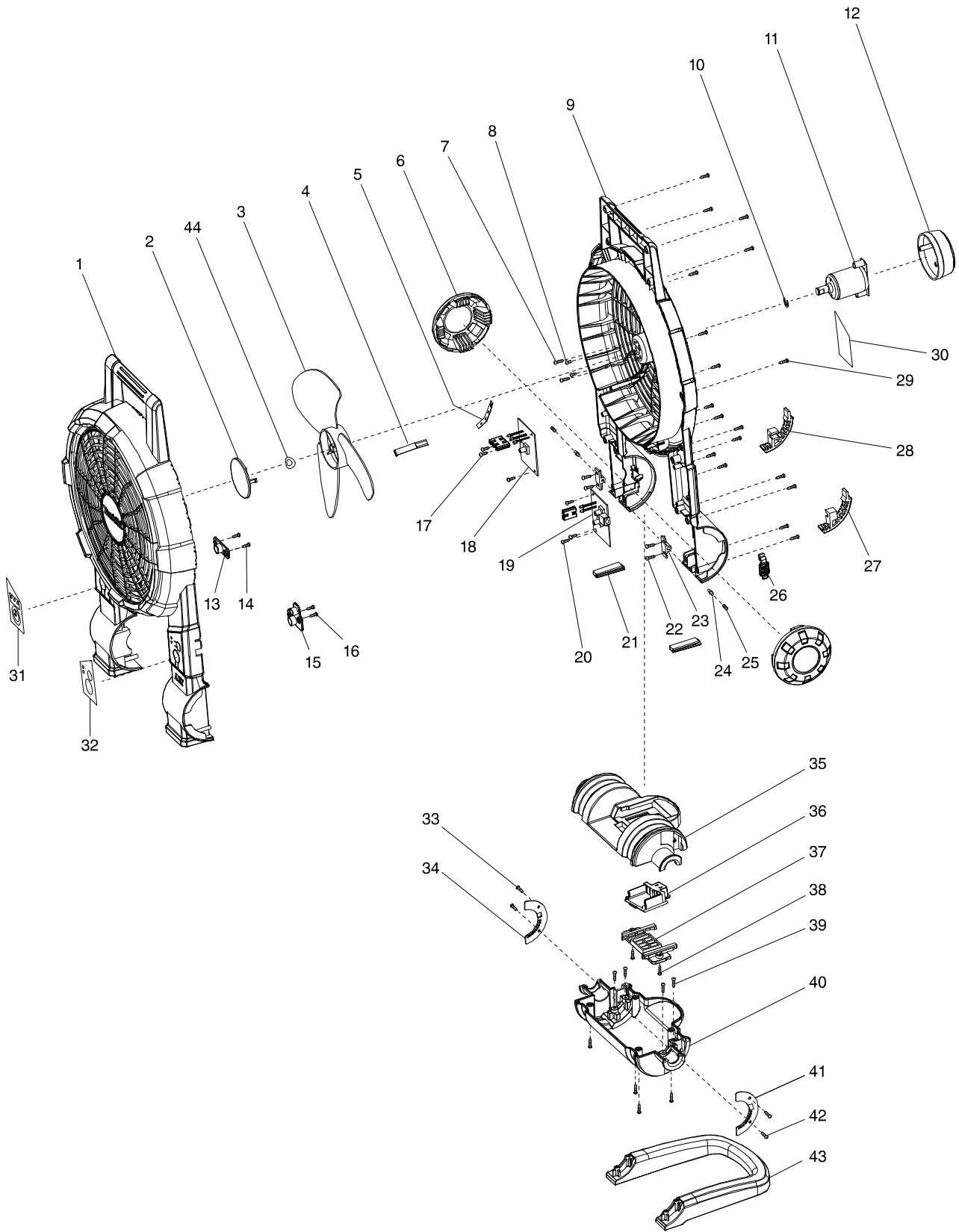


Model No. DCF201 CORDLESS FAN



Model No. DCF201 CORDLESS FAN

Item	Parts No.	Description	I/C	QTY	N/O	Opt. 1	Opt. 2	NOTE
001B	TE00000002	HOUSING SET (BLUE)		1	*	100		
D10		INC. 9			*			
001C	TE00000035	HOUSING SET (WHITE)		1		100		
D10		INC. 9						
001-1B	TE00000166	HOUSING SET (BLUE)	<	1				
D10		INC. 9						
002	TE00000003	FAN BLADE COVER		1		100		
003	TE00000004	FAN BLADE		1		100		
004	TE00000005	WIRE COVER A		1		100		
005	TE00000006	WIRE COVER B		1		100		
006	TE00000007	SIDE COVER		2		100		
007	TE00000028	TAPPING SCREW 3X14		2		100		
008	TE00000030	P.H.SCREW M3X5		2		100		
009B	TE00000002	HOUSING SET (BLUE)		1	*	100		
D10		INC. 1			*			
009C	TE00000035	HOUSING SET (WHITE)		1		100		
D10		INC. 1						
009-1B	TE00000166	HOUSING SET (BLUE)	<	1				
D10		INC. 1						
010	TE00000009	STOP RING		1		100		
011	TE00000041	MOTER ASSEMBLY		1		100		
012B	TE00000011	MOTOR COVER		1		100		
012C	TE00000039	MOTOR COVER		1		100		
013	TE00000012	BUTTON PROTECTOR R		1		100		
014	TE00000029	TAPPING SCREW 3X10		2		100		
015	TE00000013	BUTTON PROTECTOR L		1		100		
016	TE00000029	TAPPING SCREW 3X10		2		100		
017	TE00000029	TAPPING SCREW 3X10		3		100		
018	TE00000042	TIME PCB BOARD		1		100		
019	TE00000043	SWITCH PCB BOARD		1		100		
020	TE00000029	TAPPING SCREW 3X10		3		100		
021	TE00000016	FRONT FOOT		2		100		
022	TE00000028	TAPPING SCREW 3X14		4		100		
023	TE00000017	SPRING HOLDER		2		100		
024	TE00000008	PIN		2		100		
025	TE00000027	SPRING		2		100		
026	TE00000018	ADAPTER SOCKET CAP		1		100		
027	TE00000019	REAR FOOT L		1		100		
028	TE00000020	REAR FOOT R		1		100		
029	TE00000028	TAPPING SCREW 3X14		1		100		
031	TE00000032	SWITCH LABEL L		1		100		
032	TE00000033	SWITCH LABEL R		1		100		
033	TE00000029	TAPPING SCREW 3X10		2		100		
034	TE00000025	CLUTCH PLATE R		1		100		
035	TE00000021	BASE SET		1		100		
D10		INC. 40						
036	TE00000022	TERMINAL		1		100		
037	TE00000023	TERMINAL HOLDER		1		100		

