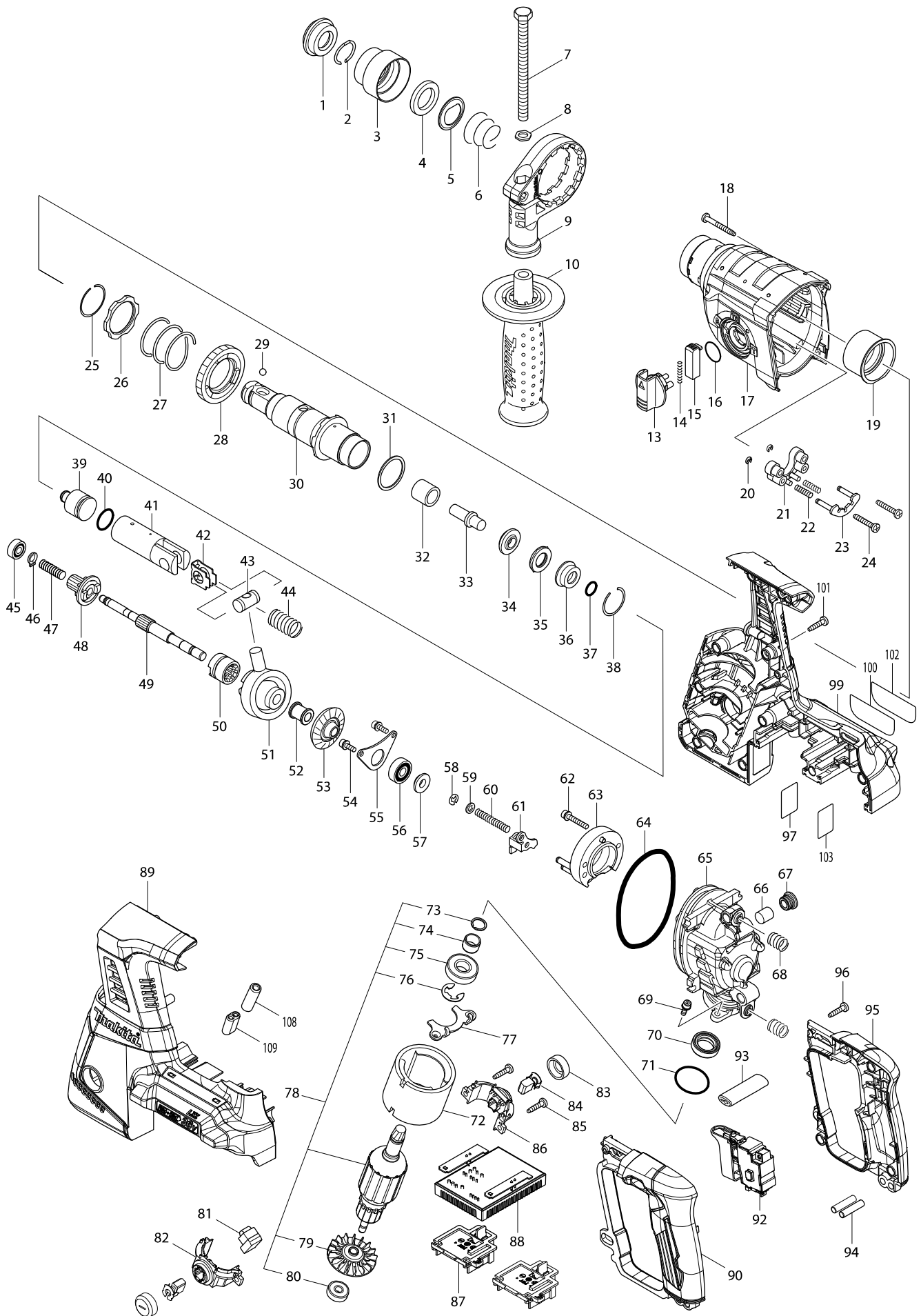


Model No. DHR263 26MM CRDLS COMBINATION HAMMER



Model No. DHR263 26MM CRDLS COMBINATION HAMMER

Item	Parts No.	Description	I/C	QTY	N/O	Opt. 1	Opt. 2	NOTE
001	286263-4	CAP 35		1	100			
002	233940-9	RING SPRING 19		1	100			
003	417629-9	CHUCK COVER		1	100			
004	257241-1	RING 21		1	100			
005	345187-4	GUIDE WASHER		1	100			
006	233916-6	CONICAL COMP. SPRING 21-29		1	100			
007	921923-8	HEX. BOLT M8X120		1	100			
008	345280-4	HEX. WASHER		1	100			
009	417630-4	GRIP BASE		1	100			
010	158057-6	GRIP 36 COMPLETE		1				
013	450980-4	CHANGE LEVER		1	100			
014	233279-0	COMPRESSION SPRING 4		1	100			
015	453706-3	LOCK BUTTON		1	100			
016	213278-8	O RING 17		1	100			
017	158945-7	GEAR HOUSING COMPLETE		1	100			
C10	213345-9	OIL SEAL 25		1	100			
018	266560-4	TAPPING SCREW 4X40		4	100			
019	153290-5	NEEDLE BEARING COMPLETE		1	100			
020	961017-7	STOP RING E-3		2	100			
021	417796-0	GUIDE BASE		1	100			
022	233344-5	COMPRESSION SPRING 4		2	100			
023	163430-7	LOCK PLATE COMPLETE		1	100			
024	266374-1	TAPPING SCREW 4X25		2	100			
025	233929-7	RING SPRING 29		1	100			
026	267460-1	WASHER 31		1	100			
027	233401-9	COMPRESSION SPRING 32		1	100			
028	227109-5	SPUR GEAR 51		1	100			
029	216022-2	STEEL BALL 7.0		1	100			
030	158574-6	TOOL HOLDER COMPLETE		1	100			
031	267229-3	FLAT WASHER 28		1	100			
032	331769-8	SLEEVE 9		1	100			
033	324669-9	IMPACT BOLT		1	100			
034	324402-9	RING 10		1	100			
035	421955-0	CUSHION RING 13		1	100			
036	324216-6	O RING CASE		1	100			
037	213073-6	O RING 9		1	100			
038	233917-4	RING SPRING 28		1	100			
039	326404-1	STRIKER		1	100			
040	213227-5	O RING 16		1	100			
041	318132-2	PISTON CYLINDER		1	100			
042	346036-8	GUIDE PLATE		1	100			
043	324215-8	PISTON JOINT		1	100			
044	234098-7	COMPRESSION SPRING 14		1	100			
045	211012-0	BALL BEARING 606ZZ		1	100			
046	961003-8	RETAINING RING S-7		1	100			
047	233343-7	COMPRESSION SPRING 7		1	100			
048	227179-4	SPUR GEAR 10		1	100			
049	325976-3	CAM SHAFT		1	100			

Model No. DHR263 26MM CRDLS COMBINATION HAMMER

Item	Parts No.	Description	I/C	QTY	N/O	Opt. 1	Opt. 2	NOTE
050	331992-5	CLUTCH CAM		1	100			
051	219014-0	SWASH BEARING 10		1	100			
052	325640-6	SLEEVE 9		1	100			
053	227549-7	SPIRAL BEVEL GEAR 26		1	100			
054	266273-7	HEX. SOCKET HEAD BOLT M4X12		2	100			
055	346038-4	BEARING RETAINER B		1	100			
056	211032-4	BALL BEARING 608ZZ		1	100			
057	324212-4	RING 8		1	100			
058	961011-9	STOP RING E-4		1	100			
059	941102-2	FLAT WASHER 5		1	100			
060	233342-9	COMPRESSION SPRING 6		1	100			
061	345220-2	CHANGE PLATE		1	100			
062	922148-7	HEX. SOCKET HEAD BOLT M4X25		2	100			
063	158944-9	INNER SUPPORT COMPLETE		1	100			
064	213728-3	O-RING 68		1	100			
065	318392-6	INNER HOUSING		1	100			
066	443143-9	FILTER		1	100			
067	424185-2	CAP		1	100			
068	234097-9	COMPRESSION SPRING 10		2	100			
069	266273-7	HEX. SOCKET HEAD BOLT M4X12		2	100			
070	213231-4	OIL SEAL 15		1	100			
071	213437-4	O RING 28		1	100			
072	632828-4	YOKE UNIT		1	100			
073	961082-6	RETAINING RING WR12		1	100			
074	331596-3	SLEEVE 12		1	100			
075	211131-2	BALL BEARING 6001DDW		1	100			
076	961016-9	STOP RING E-10		1	100			
077	346037-6	BEARING RETAINER A		1	100			
078	519235-7	ARMATURE ASS'Y 36V		1	151			
D10		INC. 73-76,79,80						
079	240037-7	FAN 44		1	100			
080	210022-4	BALL BEARING 626DDW		1	100			
081	620281-6	LIGHT CIRCUIT		1	100			
082	644507-2	BRUSH HOLDER		1	100			
083	643829-7	HOLDER CAP		2	100			
084	194928-3	CARBON BRUSH CB-442		1	100			
085	266326-2	TAPPING SCREW 4X18		2	100			
086	644508-0	BRUSH HOLDER		1	100			
087	644808-8	TERMINAL		2	100			
088	620280-8	CONTROLLER		1	100			
089	187833-1	HOUSING SET		1	100			
C10	263005-3	RUBBER PIN 6		8	100			
C20	263025-7	RUBBER PIN 4		4	100			
C30	346783-1	PLATE		4	100			
C40	803F15-0	INDICATION LABEL		1	100			
D10		INC. 99						
090	187771-7	HANDLE SET		1	100			
D10		INC. 95						

Model No. DHR263 26MM CRDLS COMBINATION HAMMER

Item	Parts No.	Description	I/C	QTY	N/O	Opt. 1	Opt. 2	NOTE
092	650721-0	SWITCH		1		100		
093	454980-6	F/R CHANGE LEVER		1		100		
094	256261-2	PIN 6		2		100		
095	187771-7	HANDLE SET		1		100		
D10		INC. 90						
096	266326-2	TAPPING SCREW 4X18		4		100		
097	815K28-9	DHR263 SERIAL NO. LABEL		1		100		
099	187833-1	HOUSING SET		1		100		
C10	263005-3	RUBBER PIN 6		8		100		
C20	263025-7	RUBBER PIN 4		4		100		
C30	346783-1	PLATE		4		100		
C40	803F15-0	INDICATION LABEL		1		100		
D10		INC. 89						
100	815K11-6	DHR263 NAME PLATE		1		100		
101	266326-2	TAPPING SCREW 4X18		10		100		
102	803F14-2	CLEAR LABEL		1		100		
103	893072-0	CLEAR LABEL		1		100		
108	688165-4	LINE FILTER		1		100		
109	688172-7	LINE FILTER		1				
A01	194683-7	GREASE VESSEL SET		1				
A02	324219-0	DEPTH GAUGE		1				
A03	443122-7	CLOTH		1		100		
A04	142729-3	CONNECTOR P.CASE(TYPE4) COMP.		1				
C10	453974-8	LATCH		4		100		
A05	803G79-0	DHR263ZJ INDICATION LABEL		1		100		
A06	803G80-5	DHR263ZJ PLASTIC CASE LABEL		2		100		
A07	837988-9	INNER TRAY		1		100		