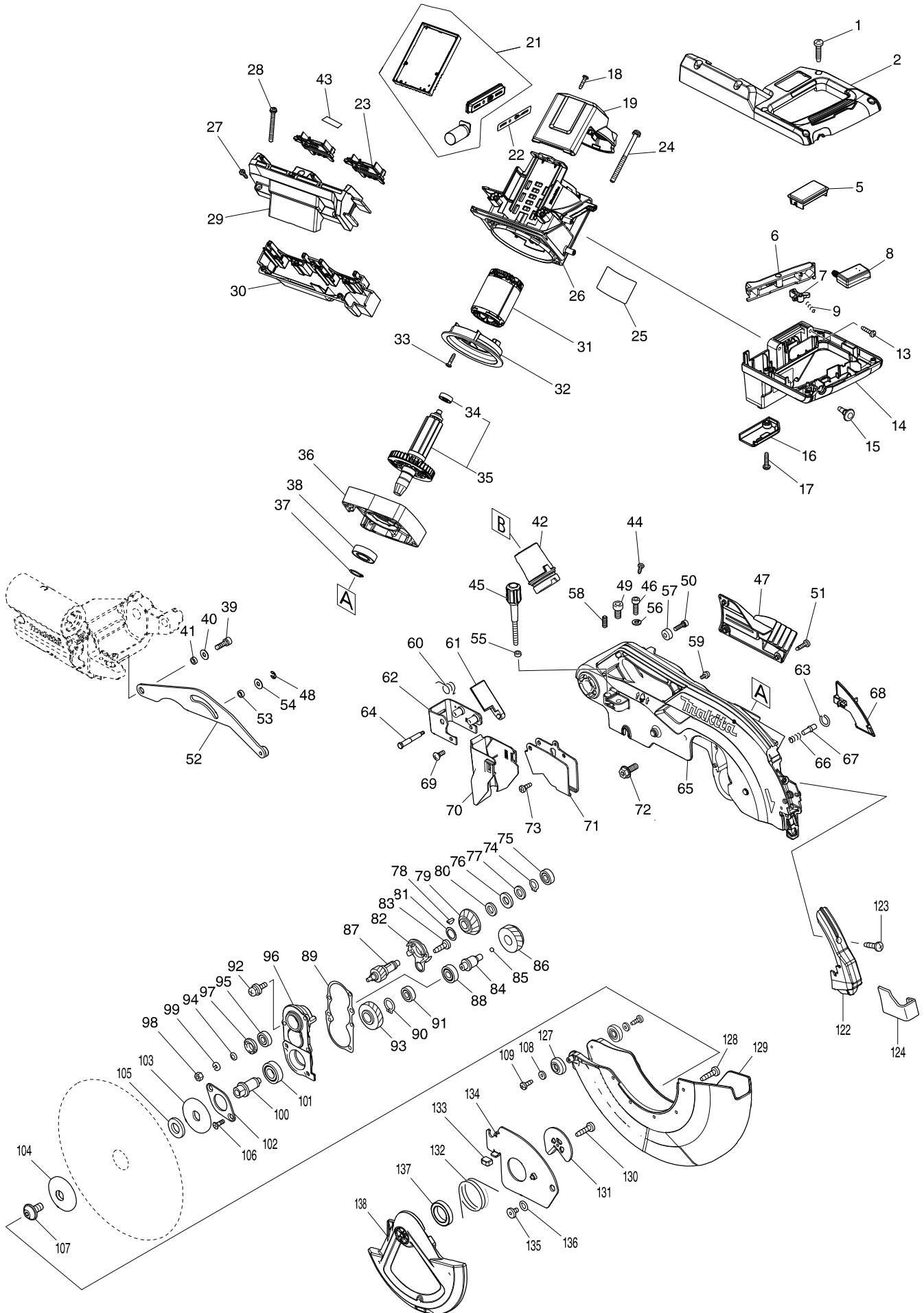
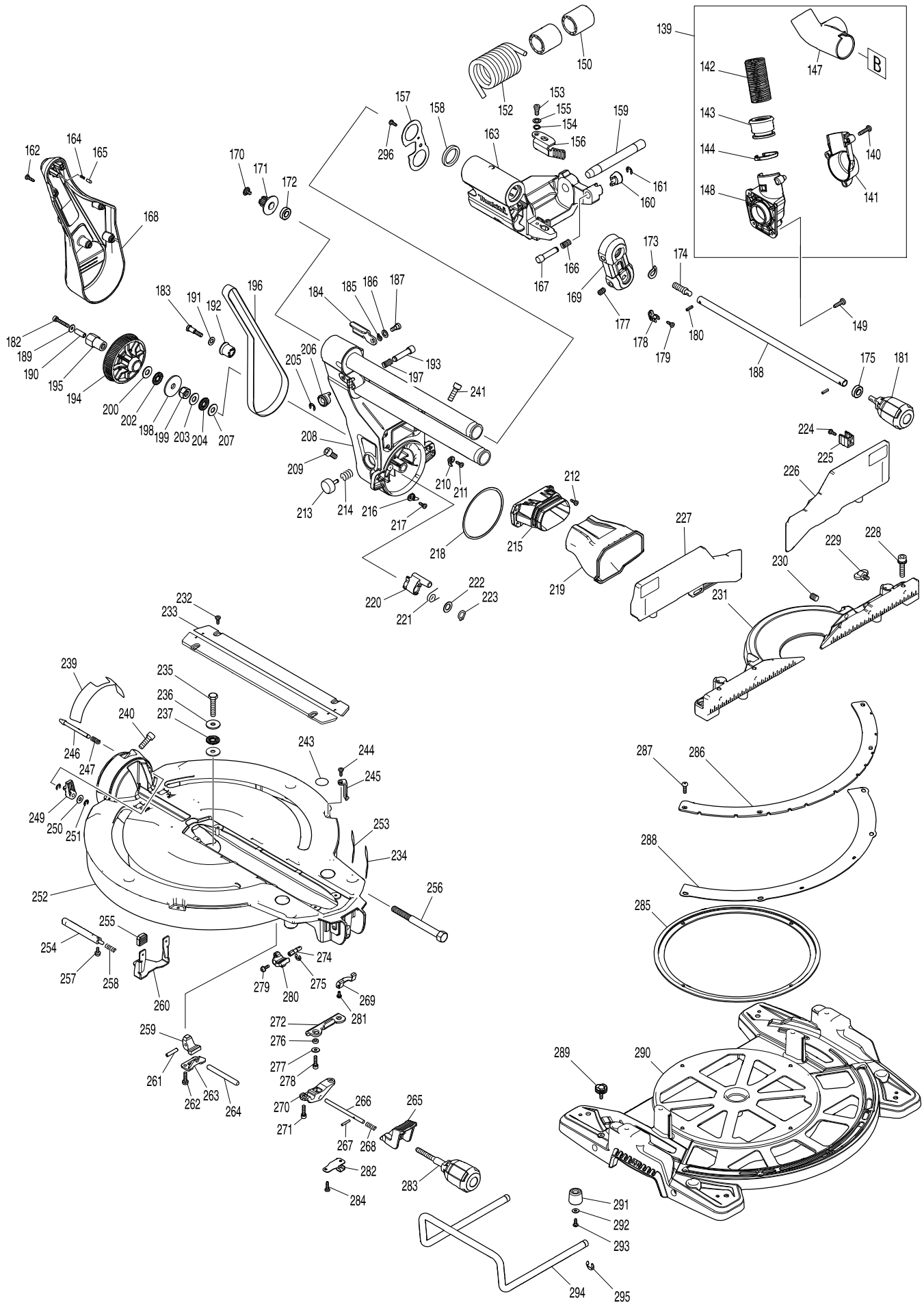


# Model No. DLS110 260MM DC SLIDE CPD. MITER SAW



# Model No. DLS110 260MM DC SLIDE CPD. MITER SAW



# Model No. DLS110 260MM DC SLIDE CPD. MITER SAW

Item	Parts No.	Description	I/C	QTY	N/O	Opt. 1	Opt. 2	NOTE
001	265995-6	TAPPING SCREW 4X18		6	100			
002	183H87-6	HANDLE SET		1				
C10	810486-8	CAUTION LABEL		1	100			
D10		INC. 14						
005	457936-8	COVER		1				
006	457935-0	SWITCH LEVER		1				
007	416356-5	LOCK-OFF LEVER		1	100			
008	651083-9	SWITCH C3XA-1PSPM		1				
009	231026-3	COMPRESSION SPRING 4		1	100			
013	265995-6	TAPPING SCREW 4X18		3	100			
014	183H87-6	HANDLE SET		1				
C10	810486-8	CAUTION LABEL		1	100			
D10		INC. 2						
015	451037-4	SWITCH BUTTON		1	100			
016	451000-7	LEAD COVER HOLDER		1	100			
017	265995-6	TAPPING SCREW 4X18		1	100			
018	265995-6	TAPPING SCREW 4X18		2	100			
019	457933-4	REAR COVER		1				
021	620741-8	CONTROLLER		1				
022	813T74-0	INDICATION LABEL		1				
023	643874-2	TERMINAL		2				
024	911948-0	PAN HEAD SCREW M6X80 WITH WR		4	100			
025	853S94-6	DLS110 NAME PLATE		1				
026	457906-7	MOTOR HOUSING		1				
027	265995-6	TAPPING SCREW 4X18		3	100			
028	911273-9	PAN HEAD SCREW M5X50		2	100			
029	183H65-6	BATTERY HOUSING SET		1				
C10	263005-3	RUBBER PIN 6		4	100			
D10		INC. 30						
030	183H65-6	BATTERY HOUSING SET		1				
C10	263005-3	RUBBER PIN 6		4	100			
D10		INC. 29						
031	629282-1	STATOR		1				
032	457934-2	BAFFLE PLATE		1				
033	265995-6	TAPPING SCREW 4X18		2	100			
034	211021-9	BALL BEARING 607LLB		1	100			
035	519454-5	ROTOR ASS'Y		1				
D10		INC. 34						
036	319591-3	MOTOR BRACKET		1				
037	961057-5	RETAINING RING S-17		1	100			
038	211275-8	BALL BEARING 6003DDW		1	100			
039	922331-6	HEX. SOCKET HEAD BOLT M6X20		1	100			
040	253804-1	FLAT WASHER 6		1	100			
041	257163-5	RING 6		1	100			
042	457704-9	DUST NOZZLE		1				
043	853S96-2	DLS110 SERIAL NO. LABEL		1				
044	266026-4	TAPPING SCREW BIND CT 4X12		1	100			
045	251554-2	THUMB SCREW M6X40		1				

# Model No. DLS110 260MM DC SLIDE CPD. MITER SAW

Item	Parts No.	Description	I/C	QTY	N/O	Opt. 1	Opt. 2	NOTE
046	922332-4	HEX. SOCKET HEAD BOLT M6X20		1	155			
047	457667-9	LOGO PLATE		1				
048	961018-5	STOP RING E-5		1	100			
049	251547-9	HEX.SOCKET HEAD BOLT M8X25		1				
050	922226-3	HEX. SOCKET HEAD BOLT M5X18		1	100			
051	266034-5	TAPPING SCREW CT 4X16		3	100			
052	144529-7	LINK PLATE COMPLETE		1				
053	257163-5	RING 6		1	100			
054	253804-1	FLAT WASHER 6		1	100			
055	262001-8	URETHANE RING 5		1	100			
056	942151-2	SPRING WASHER 6		1	100			
057	257785-1	SLEEVE 6		1	100			
058	266321-2	H.S.SET SCREW(FLAT POINT)M6X16		1	100			
059	911114-9	PAN HEAD SCREW M4X10		2	100			
060	232412-1	TORSION SPRING 11		1				
061	457764-1	DUST GUIDE PLATE		1				
062	161647-6	GUARD HOLDER		1				
063	231928-3	RING SPRING 8		1	100			
064	251544-5	SHOULDER HEX. BOLT M4		1				
065	144786-7	BLADE CASE COMPLETE		1				
C10	263005-3	RUBBER PIN 6		3	100			
066	231240-1	COMPRESSION SPRING 7		1	100			
067	256633-1	PIN 6		1	100			
068	457659-8	LEAD COVER		1				
069	265028-7	+ PAN HEAD SCREW M4X11		1	100			
070	422155-5	GUARD		1				
071	347215-1	GUARD PLATE		1				
072	266283-4	HEX. SOCKET HEX. BOLT M8X20		1	100			
073	266020-6	TAPPING SCREW 4X12		1	100			
074	961052-5	RETAINING RING S-12		1	100			
075	210005-4	BALL BEARING 608DDW		1	100			
076	261104-5	RUBBER WASHER 12		1	100			
077	253744-3	FLAT WASHER 12		1	100			
078	254001-2	WOODRUFF KEY 4		1	100			
079	227550-2	SPIRAL BEVEL GEAR 32		1	100			
080	253744-3	FLAT WASHER 12		1	100			
081	253313-0	THIN WASHER 14		1	100			
082	451002-3	GREASE HOLDER		1	100			
083	266026-4	TAPPING SCREW BIND CT 4X12		2	100			
084	325643-0	GEAR SHAFT		1	100			
085	216024-8	STEEL BALL 4		1	100			
086	227702-5	HELICAL GEAR 27		1	100			
087	227701-7	HELICAL GEAR 14		1	100			
088	210067-2	BALL BEARING 6000ZZ		1	100			
089	442147-8	GASKET		1	100			
090	961055-9	RETAINING RING S-15		1	100			
091	210005-4	BALL BEARING 608DDW		1	100			
092	911223-4	PAN HEAD SCREW M5X16		3	100			

# Model No. DLS110 260MM DC SLIDE CPD. MITER SAW

Item	Parts No.	Description	I/C	QTY	N/O	Opt. 1	Opt. 2	NOTE
093	227703-3	HELICAL GEAR 28		1	100			
094	267010-2	FLAT WASHER 5		1	100			
095	210005-4	BALL BEARING 608DDW		1	100			
096	158957-0	BEARING BOX COMPLETE		1	100			
C10	263002-9	RUBBER PIN 4		1	100			
097	285847-5	BEARING RETAINER 14-23		1	100			
098	931202-6	HEX. NUT M5		1	100			
099	942101-7	SPRING WASHER 5		1	100			
100	325644-8	SPINDLE		1	100			
101	211236-8	BALL BEARING 6002DDW		1	100			
102	285732-2	BEARING RETAINER 51		1	100			
103	224431-1	INNER FLANGE 53		1	100			
104	224432-9	OUTER FLANGE 53		1	100			
105	257262-3	RING 16		1	100			
106	265034-2	+ COUNTERSUNK HEAD SCREW M5X1		2	100			
107	266755-9	HEX.SOCKET HEAD BOLT M10X20		1	100			
108	941051-3	FLAT WASHER 4		2	100			
109	266020-6	TAPPING SCREW 4X12		2	100			
122	457661-1	BLADE CASE COVER		1				
123	266034-5	TAPPING SCREW CT 4X16		1	100			
124	457664-5	PROTECTOR		1				
127	424193-3	ROLLER		2	100			
128	266385-6	TAPPING SCREW 4X14		3	100			
129	457499-4	SEAFTY COVER B		1				
130	266385-6	TAPPING SCREW 4X14		1	100			
131	347213-5	CENTER PLATE		1				
132	231634-0	TORSION SPRING 45		1	100			
133	424190-9	CUSHION		1	100			
134	347214-3	CENTER COVER		1				
135	265985-9	HEX.SOCKET HEAD BOLT M6		1	100			
136	253932-2	WAVE WASHER 10		1	100			
137	210168-6	BALL BEARING 6805DDW		1				
138	457498-6	SAFETY COVER A		1	*			
138-1	458437-9	SAFETY COVER A	O	1				
139	126751-8	DUST NOZZLE ASSEMBLY		1				
D10		INC. 140-144,147,148						
140	265995-6	TAPPING SCREW 4X18		3	100			
141	183H71-1	HOSE CONNECTOR SET		1				
D10		INC. 148						
142	245041-1	HOSE 28-0.45		1				
143	457672-6	SLEEVE		1				
144	457673-4	STOPPER		1				
147	458198-1	HOSE JOINT		1				
148	183H71-1	HOSE CONNECTOR SET		1				
D10		INC. 141						
149	266034-5	TAPPING SCREW CT 4X16		3	100			
150	457665-3	SLEEVE 17		2				
152	233537-4	TORSION SPRING 35		1	100			

Item	Parts No.	Description	I/C	QTY	N/O	Opt. 1	Opt. 2	NOTE
153	251267-5	+ PAN HEAD SCREW M6		1	100			
154	253948-7	WAVE WASHER 8		1	100			
155	253835-0	FLAT WASHER 8		1	100			
156	347221-6	STOPPER ARM		1				
157	347222-4	FRONT ARM PLATE		1				
158	262076-7	FELT RING 30		2				
159	326994-4	ROD 16		1				
160	271437-0	KNOB 22		1				
161	961013-5	STOP RING E-7		1	100			
162	266034-5	TAPPING SCREW CT 4X16		4	100			
163	144531-0	FRONT ARM COMPLETE		1				
C10	263005-3	RUBBER PIN 6		2	100			
164	233151-6	COMPRESSION SPRING 4		1	100			
165	256364-2	PIN 4		1				
166	232384-0	COMPRESSION SPRING 10		1				
167	326977-4	STOPPER PIN		1				
168	457653-0	ARM COVER		1				
169	144658-6	HOLDER COMPLETE		1				
C10	812X89-8	INDICATION LABEL		1				
170	265008-3	+ FLAT HEAD SCREW M5		1	100			
171	222191-9	PULLEY 17-19.3		1				
172	210167-8	BALL BEARING 6900LLB		1				
173	267804-5	WAVE WASHER 15		1	100			
174	326975-8	SHAFT		1				
175	210167-8	BALL BEARING 6900LLB		1				
177	913416-9	SET SCREW M8X12		2				
178	416536-3	WRENCH HOLDER		1	100			
179	266026-4	TAPPING SCREW BIND CT 4X12		1	100			
180	951107-4	SPRING PIN 4-14		2	100			
181	273016-0	GRIP 50 B		1				
182	265919-2	HEX. SOCKET HEAD BOLT M5X30		1	100			
183	251545-3	SHOULDER HEX. BOLT M6		1				
184	144657-8	STOPPER LEVER COMPLETE		1				
C10	812X87-2	INDICATION LABEL		1				
185	253948-7	WAVE WASHER 8		1	100			
186	253835-0	FLAT WASHER 8		1	100			
187	251267-5	+ PAN HEAD SCREW M6		1	100			
188	326987-1	PIN 9-365		1				
189	253194-2	FLAT WASHER 5		1	154			
190	257426-9	SLEEVE 5		1				
191	253165-9	FLAT WASHER 8		1	100			
192	457666-1	SLEEVE 20		1				
193	326977-4	STOPPER PIN		1				
194	222192-7	PULLEY 17-87.8		1				
195	326980-5	HEX.LOCK NUT M10-19		1				
196	225101-5	SYNCHRO BELT 15-756		1				
197	232384-0	COMPRESSION SPRING 10		1				
198	253388-9	FLAT WASHER 10		1				

Item	Parts No.	Description	I/C	QTY	N/O	Opt. 1	Opt. 2	NOTE
199	252244-0	HEX.LOCK NUT M10-17		1				
200	253024-7	FLAT WASHER 10		1	100			
202	216413-7	THRUST NEEDLE CAGE 1024		1	100			
203	253024-7	FLAT WASHER 10		1	100			
204	216413-7	THRUST NEEDLE CAGE 1024		1	100			
205	961013-5	STOP RING E-7		1	100			
206	271437-0	KNOB 22		1				
207	253024-7	FLAT WASHER 10		1	100			
208	144530-2	ARM COMPLETE		1				
C10	812X88-0	INDICATION LABEL		1				
209	251547-9	HEX.SOCKET HEAD BOLT M8X25		1				
210	457871-0	INDICATION PLATE R		1				
211	266026-4	TAPPING SCREW BIND CT 4X12		1	100			
212	266034-5	TAPPING SCREW CT 4X16		4	100			
213	415208-7	RELEASE BUTTON		1	100			
214	233031-6	COMPRESSION SPRING 12		1	100			
215	457654-8	DUST GUIDE HOLDER		1				
216	457870-2	INDICATION PLATE L		1				
217	266026-4	TAPPING SCREW BIND CT 4X12		1	100			
218	253389-7	WASHER 94		1				
219	422156-3	DUST GUIDE		1				
220	319593-9	STOPPER		1				
221	231646-3	TORSION SPRING 14		1	100			
222	253744-3	FLAT WASHER 12		1	100			
223	961052-5	RETAINING RING S-12		1	100			
224	266026-4	TAPPING SCREW BIND CT 4X12		2	100			
225	457668-7	HOLDER		2				
226	144650-2	UPPER FENCE R COMPLETE		1				
C10	810503-4	CAUTION LABEL		1	100			
227	144646-3	UPPER FENCE L COMPLETE		1				
C10	810503-4	CAUTION LABEL		1	100			
228	922458-2	H.S.H.BOLT M8X35 WITH WR		4				
229	251887-5	SCREW M6X10		2	100			
230	251561-5	H.SOCKET HEAD SET SCREW M10X12		2				
231	319565-4	GUIDE FENCE		1				
232	266026-4	TAPPING SCREW BIND CT 4X12		4	100			
233	451013-8	KERF BOARD		2	100			
235	265442-7	HEX. BOLT M8X40		1	100			
236	253852-0	FLAT WASHER 8		2	100			
237	216413-7	THRUST NEEDLE CAGE 1024		1	100			
239	812X86-4	BEVEL SCALE LABEL		1				
240	251547-9	HEX.SOCKET HEAD BOLT M8X25		1				
241	251547-9	HEX.SOCKET HEAD BOLT M8X25		1				
243	813L22-1	CAUTION LABEL		2				
244	266026-4	TAPPING SCREW BIND CT 4X12		2	100			
245	457702-3	INDICATION PLATE		2				
246	326970-8	LOCK PIN 8		1				
247	234122-6	COMPRESSION SPRING 6		1	100			

Item	Parts No.	Description	I/C	QTY	N/O	Opt. 1	Opt. 2	NOTE
249	457657-2	LEVER 25		1				
250	253804-1	FLAT WASHER 6		1	100			
251	961018-5	STOP RING E-5		2	100			
252	144654-4	TURN BASE COMPLETE		1				
D10		INC. 239,243,253						
253	812X85-6	CAUTION LABEL		1				
254	326973-2	ROD 12		1				
255	286039-9	CAP		2				
256	326976-6	CENTER SHAFT		1				
257	911113-1	PAN HEAD SCREW M4X10 WITH WR		2	100			
258	231325-3	COMPRESSION SPRING 6		1	100			
259	310803-7	TURN STOPPER		1				
260	347217-7	LEVER PLATE		1				
261	256186-0	PIN 5		1	100			
262	911231-5	PAN HEAD SCREW M5X20		2	100			
263	347219-3	STOPPER HOLDER		1				
264	326971-6	LOCK ROD		1				
265	457656-4	LOCK LEVER		1				
266	326969-3	LOCK PIN 6		1				
267	256158-5	PIN 3		1	100			
268	231325-3	COMPRESSION SPRING 6		1	100			
269	347237-1	CAM PLATE		1				
270	319592-1	PIN HOLDER		1				
271	922231-0	HEX. SOCKET HEAD BOLT M5X20		2	100			
272	347216-9	LOCK PLATE		1				
274	326972-4	ROD 6		1				
275	961011-9	STOP RING E-4		1	100			
276	257425-1	RING 5		2				
277	253194-2	FLAT WASHER 5		2	154			
278	922231-0	HEX. SOCKET HEAD BOLT M5X20		2	100			
279	911113-1	PAN HEAD SCREW M4X10 WITH WR		1	100			
280	144656-0	LEVER 25 COMPLETE		1				
C10	263005-3	RUBBER PIN 6		1	100			
281	911008-8	PAN HEAD SCREW M3X8		1	100			
282	345272-3	LOCK LEVER PLATE		1	100			
283	273015-2	GRIP 50A		1				
284	266026-4	TAPPING SCREW BIND CT 4X12		2	100			
285	457655-6	SLIDE PLATE		1				
286	347223-2	MITER SCALE PLATE		1				
287	251546-1	+ PAN HEAD SCREW M5		4				
288	347218-5	MITER LOCK PLATE		1				
289	265786-5	SCREW M5X16		2	100			
290	319560-4	BASE		1				
291	421845-7	FOOT		4	100			
292	267195-4	FLAT WASHER 4		4	100			
293	266026-4	TAPPING SCREW BIND CT 4X12		4	100			
294	326978-2	HOLDER 200		2				
295	961015-1	STOP RING E-9		2	100			



