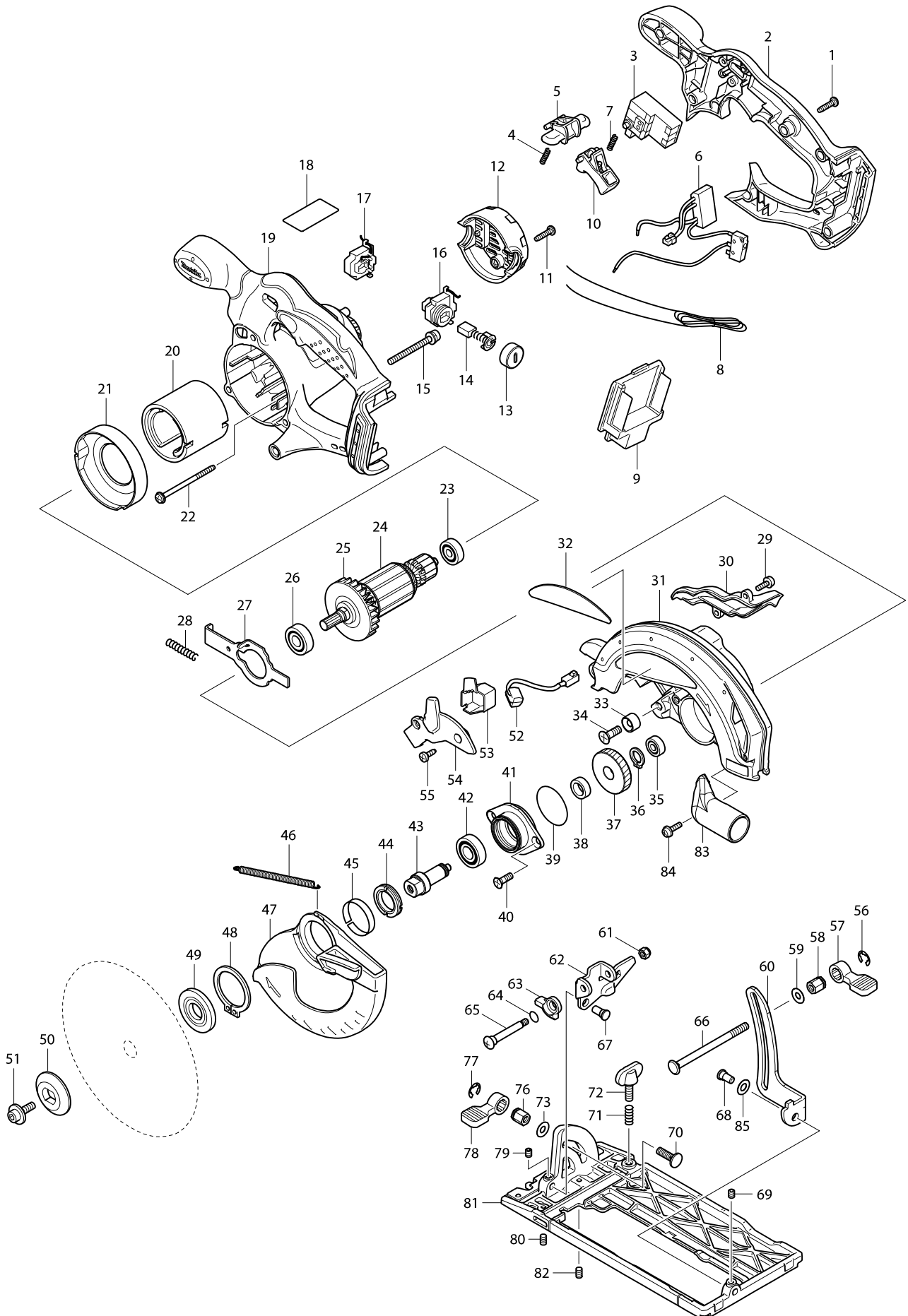


Model No. DSS610 CORDLESS CIRCULAR SAW 165MM



Model No. DSS610 CORDLESS CIRCULAR SAW 165MM

Item	Parts No.	Description	I/C	QTY	N/O	Opt. 1	Opt. 2	NOTE
001	265995-6	TAPPING SCREW 4X18		6	100			
002	141470-5	HANDLE COVER COMPLETE		1	100			
003	650631-1	SWITCH		1	100			
004	231469-9	COMPRESSION SPRING 4		1	100			
005	419322-1	LOCK OFF LEVER		1	100			
006	620088-0	POWER SUPPLY CIRCUIT		1	100			
007	231469-9	COMPRESSION SPRING 4		1	100			
009	644808-8	TERMINAL		1	100			
010	419176-6	SWITCH LEVER		1	100			
011	265995-6	TAPPING SCREW 4X18		2	100			
012	419281-9	REAR COVER		1	100			
013	643941-3	BRUSH HOLDER CAP		2	100			
014	194435-6	CARBON BRUSH CB-441		1	100			
015	911263-2	PAN HEAD SCREW M5X40		3	100			
016	643882-3	BRUSH HOLDER		1	100			
017	643883-1	BRUSH HOLDER		1	100			
018	815E89-3	DSS610 NAME PLATE		1	100			
019	141471-3	MOTOR HOUSING COMPLETE		1	100			
020	638107-8	YOKE UNIT		1	100			
021	419285-1	BAFFLE PLATE		1	100			
022	266292-3	TAPPING SCREW 4X65		2	100			
023	210023-2	BALL BEARING 627DDW		1	100			
024	519173-3	ARMATURE ASS'Y 18V		1	151			
D10		INC. 23,25,26						
025	241869-5	FAN 55		1	100			
026	211061-7	BALL BEARING 6000LLB		1	100			
027	346059-6	SHAFT LOCK		1	100			
028	233092-6	COMPRESSION SPRING 5		1	100			
029	911118-1	PAN HEAD SCREW M4X12		2	100			
030	419284-3	BLOWER NOZZLE		1	100			
031	188045-9	BLADE CASE SET		1	100			
C10	213434-0	O RING 26		1	100			
D10		INC. 32						
032	819217-2	MAKITA LOGO PLATE		1	100			
033	262049-0	RUBBER RING 6		1	100			
034	251368-9	+ COUNTERSUNK SCREW M6		1	100			
035	210028-2	BALL BEARING 606ZZ		1	100			
036	961052-5	RETAINING RING S-12		1	100			
037	227156-6	SPUR GEAR 52		1	100			
038	257173-2	RING 12		1	100			
039	213512-6	O RING 39		1	100			
040	265034-2	+ COUNTERSUNK HEAD SCREW M5X1		2	100			
041	318009-1	BEARING BOX		1	100			
042	211131-2	BALL BEARING 6001DDW		1	100			
043	324626-7	SPINDLE		1	100			
044	285845-9	BEARING RETAINER 19-29		1	100			
045	345469-4	THICKNESS RING		1	100			
046	231821-1	TENSION SPRING 3		1	100			

Item	Parts No.	Description	I/C	QTY	N/O	Opt. 1	Opt. 2	NOTE
047	419286-9	SAFETY COVER		1	100			
048	961152-1	RETAINING RING (EXT) S-34		1	100			
049	224397-5	INNER FLANGE 40		1	100			
050	224282-2	OUTER FLANGE 40		1	100			
051	266133-3	HEX. SOCKET HEAD BOLT M6X20		1	100			
052	631694-6	LED CIRCUIT		1	100			
053	419341-7	CONNECTOR BOX		1	100			
054	419282-7	LIGHT COVER		1	100			
055	266026-4	TAPPING SCREW BIND CT 4X12		2	100			
056	961014-3	STOP RING E-8		1	100			
057	272229-0	LEVER 40		1	100			
058	252158-3	HEX.NUT M6		1	100			
059	941151-9	FLAT WASHER 6		1	100			
060	345658-1	DEPTH GUIDE		1	100			
061	252103-8	HEX. LOCK NUT M5-8		1	100			
062	345657-3	ANGULAR GUIDE		1	100			
063	317986-4	STOPPER		1	100			
064	213062-1	O RING 9		1	100			
065	265084-7	+ TRUSS HEAD SCREW M5		1	100			
066	266194-3	FLAT HEAD SCREW M6X90		1	100			
067	256480-0	SHOULDER PIN 6-7		1	100			
068	256480-0	SHOULDER PIN 6-7		1	100			
069	266264-8	H.S.SET SCREW(FLAT POINT)M5X6		1	100			
070	251919-8	CAP SQUARE NECK BOLT M6X20		1	100			
071	231007-7	COMPRESSION SPRING 6		1	100			
072	251896-4	SCREW M5X20		1	100			
073	941151-9	FLAT WASHER 6		1	100			
076	252133-9	HEX. NUT M6		1	100			
077	961014-3	STOP RING E-8		1	100			
078	272251-7	LEVER 30		1	100			
079	266264-8	H.S.SET SCREW(FLAT POINT)M5X6		1	100			
080	266229-0	H.S.SET SCREW(CUP POINT)M5X8		1	100			
081	154832-8	BASE COMPLETE		1	100			
C10	816851-9	SCALE PLATE		1	100			
082	266229-0	H.S.SET SCREW(CUP POINT)M5X8		1	100			
083	419283-5	DUST NOZZLE		1	100			
084	911118-1	PAN HEAD SCREW M4X12		1	100			
085	253186-1	FLAT WASHER 7		1	100			
A01	164095-8	GUIDE RULE		1				
A02	783203-8	HEX. WRENCH 5		1				
A03	A-85101	T.C.T.SAW BLADE 165X24TX20		1				
A04E	141353-9	PLASTIC CARRYING CASE COMPLETE		1				
C10	163455-1	LATCH		2				
C20	419360-3	HANDLE		1	100			
A04F	141353-9	PLASTIC CARRYING CASE COMPLETE		1				
C10	163455-1	LATCH		2				
C20	419360-3	HANDLE		1	100			
A04G	821551-8	CONNECTOR PLASTIC CASE (TYPE3)		1				

