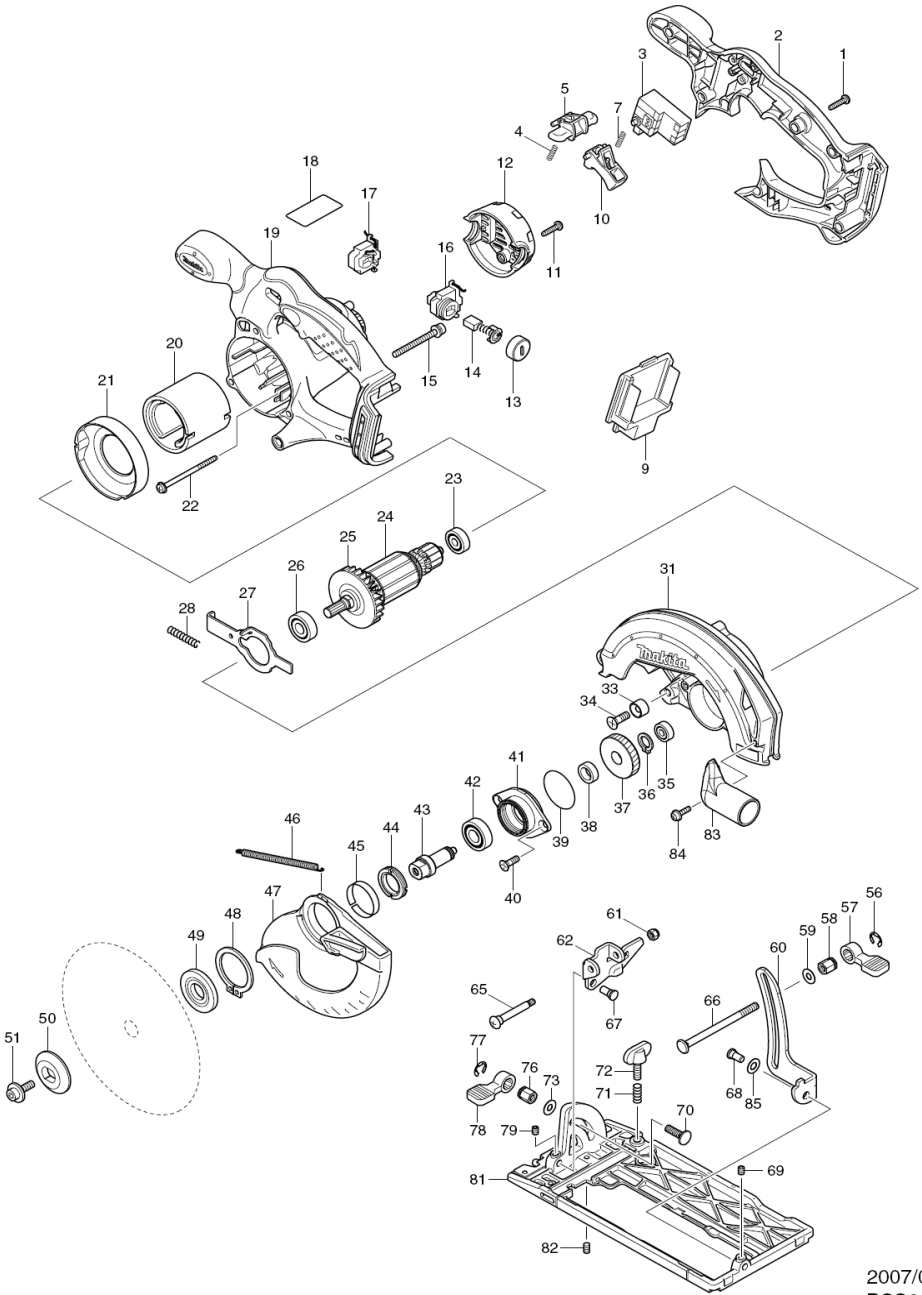


BSS611



2007/07
BSS611

POS No	Parts	Description	USED qty	PC/Set	qty
001	265995-6	TAPPING SCREW 4X18	5	PC.	1
002	450227-6	HANDLE COVER	1	PC.	1
003	651976-0	SWITCH TG73BD	1	PC.	1
004	231469-9	COMPRESSION SPRING 4	1	PC.	1
005	419664-3	LOCK OFF LEVER	1	PC.	1
007	231469-9	COMPRESSION SPRING 4	1	PC.	1
009	643812-4	TERMINAL	1	PC.	1
010	419665-1	SWITCH LEVER	1	PC.	1
011	265995-6	TAPPING SCREW 4X18	2	PC.	1
012	419281-9	REAR COVER	1	PC.	1
013	643829-7	HOLDER CAP	2	PC.	1
014	194435-6	CARBON BRUSH CB-441	1	PC.	1
015	911263-2	PAN HEAD SCREW M5X40	3	PC.	1
016	643825-5	BRUSH HOLDER	1	PC.	1
017	643824-7	BRUSH HOLDER	1	PC.	1
018	864619-7	BSS611 NAME PLATE	1	PC.	1
019	450226-8	MOTOR HOUSING	1	PC.	1
020	638571-3	YOKE UNIT	1	PC.	1
021	419285-1	BAFFLE PLATE	1	PC.	1
022	266292-3	TAPPING SCREW 4X65	2	PC.	1
023	210045-2	BALL BEARING 627DDW	1	PC.	1
024	510095-0	ARMATURE ASSY 18V	1	PC.	1
024	D10	INC. 23.25.26	0		1
025	241869-5	FAN 55	1	PC.	1
026	211061-7	BALL BEARING 6000LLB	1	PC.	1
027	345659-9	SHAFT LOCK	1	PC.	1
028	233092-6	COMPRESSION SPRING 5	1	PC.	1
031	158603-5	BLADE CASE COMPLETE	1	PC.	1
031	C10	O RING 26	1	PC.	1
031	C20	OPERATIONAL INDICATION LABEL	1	PC.	1
033	262049-0	RUBBER RING 6	1	PC.	1
034	251368-9	+ COUNTERSUNK SCREW M6	1	PC.	1
035	210028-2	BALL BEARING 606ZZ	1	PC.	1
036	961052-5	RETAINING RING S-12	1	PC.	1
037	227156-6	SPUR GEAR 52	1	PC.	1
038	257173-2	RING 12	1	PC.	1
039	213512-6	O RING 39	1	PC.	1
040	265034-2	+ COUNTERSUNK HEAD SCREW M5X16	2	PC.	1
041	318009-1	BEARING BOX	1	PC.	1
042	210109-2	BALL BEARING 6001DDW	1	PC.	1
043	324626-7	SPINDLE	1	PC.	1
044	285845-9	BEARING RETAINER 19-29	1	PC.	1
045	345469-4	THICKNESS RING	1	PC.	1
046	231821-1	TENSION SPRING 3	1	PC.	1
047	419286-9	SAFETY COVER	1	PC.	1
048	961152-1	RETAINING RING (EXT) S-34	1	PC.	1
049	224412-5	INNER FLANGE 35	1	PC.	1
050	224409-4	OUTER FLANGE 35	1	PC.	1
051	266133-3	HEX. SOCKET HEAD BOLT M6X20	1	PC.	1
056	961014-3	STOP RING E-8	1	PC.	1
057	272229-0	LEVER 40	1	PC.	1
058	252158-3	HEX.NUT M6	1	PC.	1
059	941151-9	FLAT WASHER 6	1	PC.	1
060	345658-1	DEPTH GUIDE	1	PC.	1
061	252103-8	HEX. LOCK NUT M5-8	1	PC.	1
062	345657-3	ANGULAR GUIDE	1	PC.	1
065	265056-2	+ PAN HEAD SCREW M5	1	PC.	1
066	266194-3	FLAT HEAD SCREW M6X90	1	PC.	1
067	256480-0	SHOULDER PIN 6-7	1	PC.	1
068	256480-0	SHOULDER PIN 6-7	1	PC.	1
069	266264-8	HEX. SOCKET HEAD SCREW M5X6	1	PC.	1
070	251919-8	CAP SQUARE NECK BOLT M6X20	1	PC.	1
071	231007-7	COMPRESSION SPRING 6	1	PC.	1
072	251896-4	SCREW M5X20	1	PC.	1
073	941151-9	FLAT WASHER 6	1	PC.	1
076	252133-9	HEX. NUT M6	1	PC.	1
077	961014-3	STOP RING E-8	1	PC.	1
078	272251-7	LEVER 30	1	PC.	1
079	266264-8	HEX. SOCKET HEAD SCREW M5X6	1	PC.	1
081	154832-8	BASE COMPLETE	1	PC.	1
082	266229-0	HEX. SOCKET SET SCREW M5X8	1	PC.	1
083	419283-5	DUST NOZZLE	1	PC.	1
084	911118-1	PAN HEAD SCREW M4X12	1	PC.	1
085	253186-1	FLAT WASHER 7	1	PC.	1
A01	164095-8	GUIDE RULE	1	PC.	1
A02	783203-8	HEX. WRENCH 5	1	PC.	1