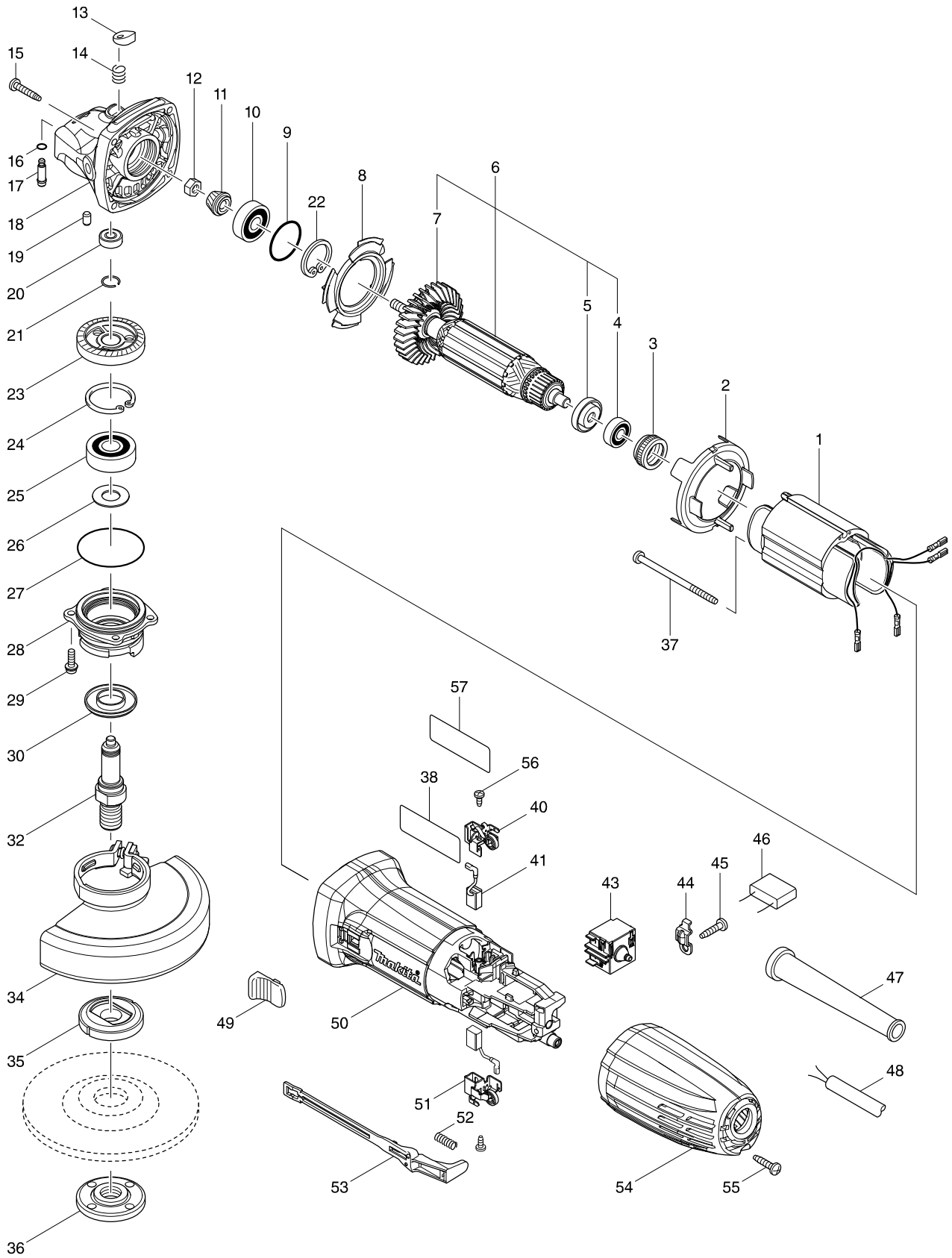


Model No. GA4530R 115MM ANGLE GRINDER



Model No. GA4530R 115MM ANGLE GRINDER

Item	Parts No.	Description	I/C	QTY	N/O	Opt. 1	Opt. 2	NOTE
001A	633901-3	FIELD 115V		1				
001B	633903-9	FIELD 220-240V		1				
001C	633901-3	FIELD 115V		1				
001D	633903-9	FIELD 220-240V		1				
002	450796-7	BAFFLE PLATE		1		100		
003	421868-5	LABYRINTH RUBBER RING 19		1		100		
004	210034-7	BALL BEARING 607LLB		1		100		
005	681636-0	INSULATION WASHER		1		100		
D10		INC. 4,5,7						
006A	517646-0	ARMATURE ASS'Y 115V		1		151		
006B	517649-4	ARMATURE ASS'Y 240V		1		151		
006C	517646-0	ARMATURE ASS'Y 115V		1		151		
006D	517649-4	ARMATURE ASS'Y 240V		1		151		
007	240139-9	FAN 56		1		154		
008	413126-3	GUIDE PLATE		1		100		
009	213445-5	O-RING 26		1		100		
010	211092-6	BALL BEARING 629DDW		1		100		
011	227545-5	SPIRAL BEVEL GEAR 10		1		154		
012	252186-8	HEX. NUT M6		1		100		
013	417771-6	PIN CAP		1		100		
014	234057-1	COMPRESSION SPRING 8		1		100		
015	266324-6	TAPPING SCREW 4X22		4		100		
016	213032-0	O RING 4		1		100		
017	256510-7	SHOULDER PIN 4		1		100		
018	318335-8	GEAR HOUSING		1		100		
019	263002-9	RUBBER PIN 4		1		100		
020	210033-9	BALL BEARING 696ZZ		1		100		
021	233950-6	RING SPRING 11		1		100		
022	962105-3	RETAINING RING R-26		1		100		
023	227546-3	SPIRAL BEVEL GEAR 37		1		154		
024	962151-6	RETAINING RING R-32		1		100		
025	211129-9	BALL BEARING 6201DDW		1		100		
026	267113-2	FLAT WASHER 12		1		100		
027	213561-3	O RING 42		1		155		
028	318336-6	BEARING BOX		1		100		
029	265099-4	PAN HEAD SCREW M4X14		4		100		
030	345464-4	LABYRINTH RING		1		100		
032	324954-0	SPINDLE		1		100		
034	123098-1	WHEEL COVER 115AK ASS'Y		1		100		
C10	213009-5	O RING 4		1		100		
C20	265180-1	PAN HEAD SCREW M5X16		1		100		
035	224415-9	INNER FLANGE 42		1		100		
036	224554-5	LOCK NUT 14-45		1				
037	266325-4	TAPPING SCREW 4X70		2		100		
038	851S91-6	GA4530R NAME PLATE		1				
040	643839-4	BRUSH HOLDER 6X9		1		100		
041	194722-3	CARBON BRUSH CB-459		1		100		
043A	650770-7	SWITCH		1				

Model No. GA4530R 115MM ANGLE GRINDER

Item	Parts No.	Description	I/C	QTY	N/O	Opt. 1	Opt. 2	NOTE
043B	650769-2	SWITCH		1				
043C	650770-7	SWITCH		1				
043D	650769-2	SWITCH		1				
044	687682-1	STRAIN RELIEF		1		100		
045	266326-2	TAPPING SCREW 4X18		1		100		
046	638739-1	CAPACITOR UNIT		1		100		
047	682566-8	CORD GUARD 10		1		100		
048A	665918-8	POWER SUPPLY CORD 1.0-2-2.5		1		100		
048B	692527-0	POWER SUPPLY CORD 1.0-2-2.5		1		100		
048C	665918-8	POWER SUPPLY CORD 1.0-2-2.5		1		100		
048D	692527-0	POWER SUPPLY CORD 1.0-2-2.5		1		100		
049	418016-5	SWITCH KNOB		1		100		
050	456380-6	MOTOR HOUSING		1				
051	643839-4	BRUSH HOLDER 6X9		1		100		
052	233121-5	COMPRESSION SPRING 4		1		100		
053	450797-5	SWITCH LEVER		1		100		
054	456381-4	REAR COVER		1				
055	266326-2	TAPPING SCREW 4X18		1		100		
056	266492-5	TAPPING SCREW 3X8		2		100		
057	806E99-1	CLEAR LABEL		1				
A01	153489-2	GRIP 36 COMPLETE		1				
A02	782423-1	LOCK NUT WRENCH 35		1				
A03	A-80927	GRINDING WHEEL 115X6X22(A36P)		1				
A04C	824985-4	PLASTIC CARRYING CASE		1				
C10	183091-7	SLIDE LATCH RL SET		1				
A04D	824985-4	PLASTIC CARRYING CASE		1				
C10	183091-7	SLIDE LATCH RL SET		1				
A05C	P-34665	DIAMOND WHEEL 115MM		1	*			
A05D	P-34665	DIAMOND WHEEL 115MM		1	*			
A05-1C	D-61123	DIAMOND WHEEL 115X22.23MM SEG	O	1				
A05-1D	D-61123	DIAMOND WHEEL 115X22.23MM SEG	O	1				
E01A	655030-2	PLUG UK TYPE 16A-4H/110V		1				
E01C	655030-2	PLUG UK TYPE 16A-4H/110V		1				
E02A	654091-9	NON-INSULATED TERMINAL1.25-2AF		2		100		
E02C	654091-9	NON-INSULATED TERMINAL1.25-2AF		2		100		
E03	808153-7	SAFETY INSTRUCTION LABEL		1		100		