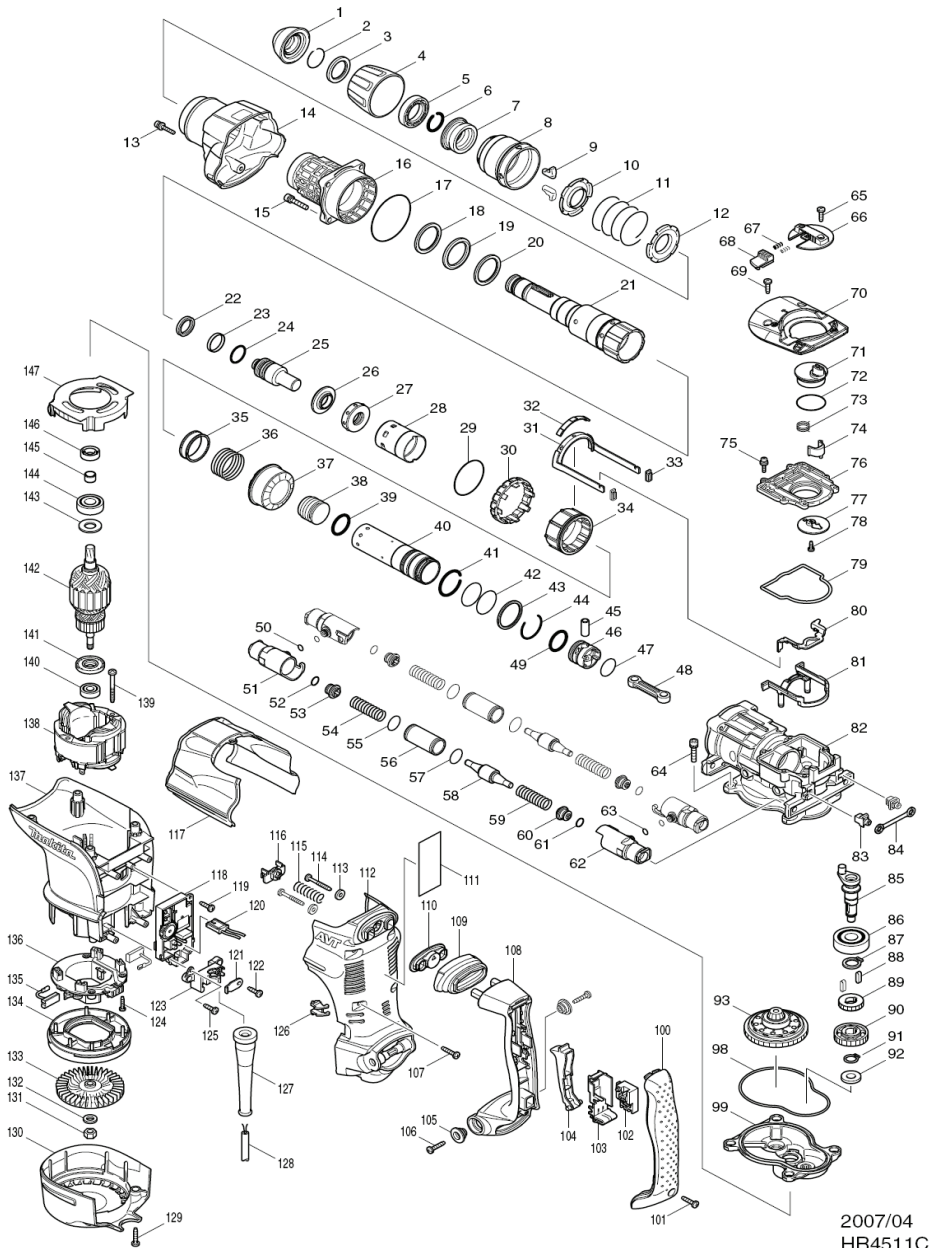


HR4511C



2007/04
HR4511C

83		419008-7	FIX GUIDE	2
84		423345-3	CUSHION PLATE	1
85		324801-5	CRANK SHAFT	1
86		211279-0	BALL BEARING 6303LLU	1
87		961057-5	RETAINING RING S-17	1
88		254220-0	KEY 5	2
89		227181-7	SPUR GEAR 19	1
90		226655-5	HELICAL GEAR 36	1
91		961054-1	RETAINING RING S-14	1
92		253180-3	FLAT WASHER 10	1
93		125415-1	TORQUE LIMITER ASSY	1
98		424033-5	SEAL RING	1
99		158299-2	GEAR HOUSING COMPLETE	1
100		419796-6	HANDLE COVER	1
101		265995-6	TAPPING SCREW 4X18	1
102		650567-4	SWITCH TG73B-1	1
103		154626-1	SWITCH HOLDER COMPLETE	1
104		419025-7	SWITCH LEVER	1
105		313124-6	SHOULDER SLEEVE 6	2
106		266041-8	TAPPING SCREW 5X25	2
107		266041-8	TAPPING SCREW 5X25	6
108		419798-2	HANDLE	1
109		424035-1	DUST COVER	1
110		450028-2	DUST COVER SUPPORT	1
111		864096-3	HR4511C NAME PLATE	1
112		450038-9	HANDLE BASE	1
113		253807-5	FLAT WASHER 5	2
114		266211-9	TAPPING SCREW 5X40	2
115		233434-4	COMPRESSION SPRING 11	1
116		419013-4	SPRING GUIDE	1
117		450036-3	CRANK HOUSING COVER	1
118		631750-2	CONTROLLER	1
118A		631751-0	CONTROLLER	1
119		266192-7	TAPPING SCREW 4X14	1
120		638510-3	LEAD UNIT	1
121		687169-3	STRAIN RELIEF	1
122		266192-7	TAPPING SCREW 4X14	1
123		419024-9	CORD CLAMP BASE	1
124		265995-6	TAPPING SCREW 4X18	4
125		266192-7	TAPPING SCREW 4X14	1
126		419774-6	LENS	1
127		682560-0	CORD GUARD 10	1
128		695228-9	POWER SUPPLY CORD 1.5-2-4.0	1
128A		692623-4	POWER SUPPLY CORD 1.5-2-4.0	1
129		266041-8	TAPPING SCREW 5X25	2
130		450035-5	REAR COVER	1
131		252178-7	HEX. NUT M8-12	1
132		253165-9	FLAT WASHER 8	1
133		240016-5	FAN 90	1
134		419782-7	FAN GUIDE	1
135		194412-8	CARBON BRUSH CB-171	1
136		638447-4	BRUSH HOLDER UNIT	1
137		450041-0	MOTOR HOUSING	1
138		636311-3	FIELD 115V	1
138A		636313-9	FIELD 220-240V	1
139		266046-8	TAPPING SCREW 5X50	2
140		210059-1	BALL BEARING 6000DDW	1
141		681642-5	INSULATION WASHER	1
142		517766-0	ARMATURE ASS'Y 115V	1
142		INC. 140141145	INC. 140141145	0
142A		517768-6	ARMATURE ASS'Y 220-240V	1
142A		INC. 140141145	INC. 140141145	0
143		267025-9	FLAT WASHER 15	1
144		211238-4	BALL BEARING 6202LLU	1
145		331596-3	SLEEVE 12	1
146		213231-4	OIL SEAL 15	1
147		450033-9	BAFFLE PLATE	1
A01		158131-0	GRIP 36 COMPLETE	1
A02		158273-0	PLASTIC CARRYING CASE COMPLETE	1
A02		163467-4	LATCH	2
A03		816879-7	INDICATION LABEL	1
A03		181573-3	GREASE VESSEL 93G	1
A03		817105-7	CAUTION LABEL	1
A04		134890-0	SIDE HANDLE 68 ASS'Y	1
A04		151769-0	SIDE HANDLE 68 COMPLETE	1
A04		252640-2	WING NUT M8	1
A04		265439-6	HEX. BOLT M8X150	1
A04		417002-3	SIDE HANDLE CAM	2
A04		417003-1	SIDE HANDLE	1
A05		443122-7	CLOTH	1
A06		265701-9	SCREW M6X14	1
A07		266163-4	CUP SQUARE NECK BOLT M8X80	1
A08		321248-4	DEPTH GAUGE	1
A09		344491-8	GRIP SPRING 68	1
A10		344492-6	PLATE	1
A11		416299-1	SIDE GRIP BASE 68	1
A12		931302-2	HEX. NUT M6	1
E01		655030-2	PLUG UK TYPE 16A-4H/110V	1
E02		654091-9	NON-INSULATED TERMINAL	2