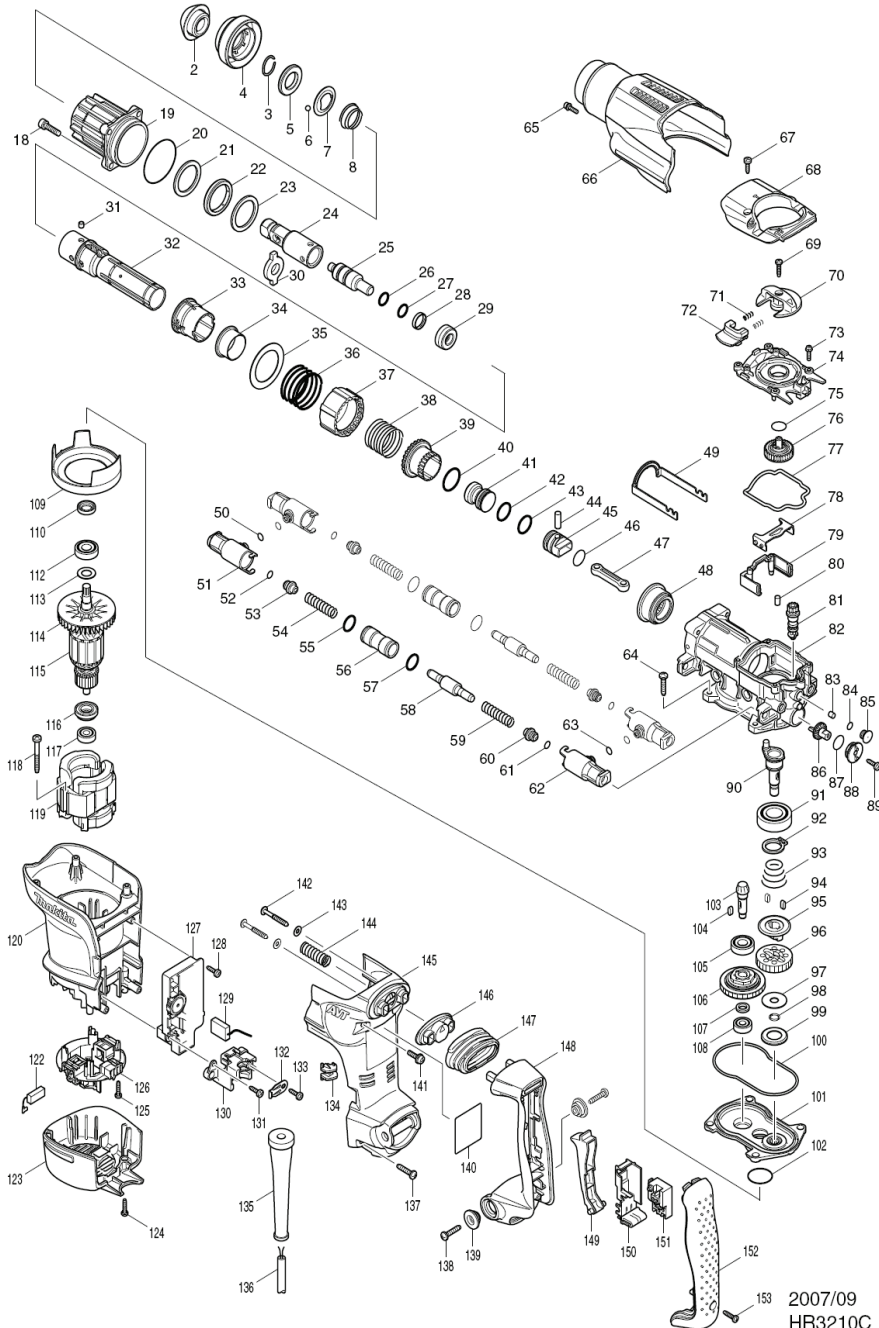


HR3210C



2007/09
HR3210C

Item	Sub	Sub_Explanation	Parts_No.	Parts_Description	Qty	Unit	Note
2			286282-0	TOOL HOLDER CAP	1	PC.	
3			233940-9	RING SPRING 19	1	PC.	
4			450245-4	CHUCK COVER	1	PC.	
5			257288-5	RING 21	1	PC.	
6			216022-2	STEEL BALL 7.0	2	PC.	
7			345873-7	GUIDE WASHER	1	PC.	
8			234049-0	CONICAL COMPRESSIONSPRING22-32	1	PC.	
18			922341-3	HEX. SOCKET HEAD BOLT M6X25	4	PC.	
19			158533-0	BARREL COMPLETE	1	PC.	
19	C10		213436-6	OIL SEAL 28	1	PC.	
19	C20		213516-8	O RING 36	1	PC.	
20			213656-2	O RING 53	1	PC.	
21			267810-0	FLAT WASHER 34	1	PC.	
22			262138-1	URETHAN RING 34	1	PC.	
23			267810-0	FLAT WASHER 34	1	PC.	
24			324840-5	TOOL HOLDER	1	PC.	
25			324849-7	IMPACT BOLT	1	PC.	
26			213228-3	O RING 15	1	PC.	
27			213228-3	O RING 15	1	PC.	
28			213321-3	FLUORO CARBON RESIN RING 20	1	PC.	
29			424062-8	RUBBER RING 13	1	PC.	
30			324838-2	SLIDE PLATE	1	PC.	
31			256266-2	PIN 6	4	PC.	
32			331794-9	CYLINDER 25	1	PC.	
33			450243-8	SLIDE SLEEVE	1	PC.	
34			331805-0	RING 29	1	PC.	
35			267360-5	FLAT WASHER 40	1	PC.	
36			234052-1	COMPRESSION SPRING 42	1	PC.	
37			450236-5	LOCK SLEEVE	1	PC.	
38			234050-5	COMPRESSION SPRING 34	1	PC.	
39			331795-7	DRIVING SLEEVE	1	PC.	
40			213434-0	O RING 26	1	PC.	
41			324858-6	STRIKER	1	PC.	
42			213283-5	O-RING 18	1	PC.	
43			213283-5	O-RING 18	1	PC.	
44			256087-2	PIN 7	1	PC.	
45			324918-4	PISTON	1	PC.	
46			213262-3	O RING 18	1	PC.	
47			450235-7	CONNECTING ROD	1	PC.	
48			227531-6	SPIRAL BEVEL GEAR 37	1	PC.	
49			345867-2	LINK ARM	1	PC.	
50			213030-4	O RING 8	2	PC.	
51			450248-8	PIPE HOLDER	2	PC.	
52			213030-4	O RING 8	2	PC.	
53			450239-9	SPRING GUIDE	2	PC.	
54			234048-2	COMPRESSION SPRING 10	2	PC.	
55			213275-4	O RING 18	2	PC.	
56			331800-0	PIPE 15	2	PC.	
57			213275-4	O RING 18	2	PC.	
58			324862-5	COUNTER WEIGHT	2	PC.	
59			234048-2	COMPRESSION SPRING 10	2	PC.	
60			450239-9	SPRING GUIDE	2	PC.	
61			213030-4	O RING 8	2	PC.	
62			450248-8	PIPE HOLDER	2	PC.	
63			213030-4	O RING 8	2	PC.	
64			266041-8	TAPPING SCREW 5X25	4	PC.	
65			922123-3	HEX. SOCKET HEAD BOLT M4X14	1	PC.	
66			450254-3	CRANK HOUSING COVER	1	PC.	
67			266192-7	TAPPING SCREW 4X14	2	PC.	
68			318201-9	CRANK CAP COVER	1	PC.	
69			265995-6	TAPPING SCREW 4X18	1	PC.	
70			450249-6	CHANGE LEVER	1	PC.	
71			233436-0	COMPRESSION SPRING 3	2	PC.	
72			450250-1	LOCK BUTTON	1	PC.	
73			911128-8	PAN HEAD SCREW M4X16	5	PC.	
74			450241-2	CRANK CAP	1	PC.	
75			213223-3	O RING 16	1	PC.	
76			158437-6	SPUR GEAR 33 COMPLETE	1	PC.	
77			424064-4	SEAL RING B	1	PC.	
78			345868-0	LINK PLATE	1	PC.	
79			450247-0	AIR PIPE	1	PC.	
80			263005-3	RUBBER PIN 6	2	PC.	
81			450242-0	GEAR SHAFT	1	PC.	
82			158531-4	CRANK HOUSING COMPLETE	1	PC.	
82	C10		213579-4	O-RING 44	1	PC.	
82	C10		158712-0	CRANK HOUSING COMPLETE	1	PC.	
82	C10		213579-4	O-RING 44	1	PC.	
83			443138-2	FILTER	1	PC.	
84			213030-4	O RING 8	1	PC.	
85			450238-1	FILTER CAP	1	PC.	
86			450244-6	CRANK GEAR	1	PC.	
87			213223-3	O RING 16	1	PC.	
88			450237-3	CAP HOLDER	1	PC.	
89			266192-7	TAPPING SCREW 4X14	1	PC.	
90			324839-0	CRANK SHAFT	1	PC.	
91			211332-2	BALL BEARING 6004LLU	1	PC.	
92			961060-6	RETAINING RING S-20	1	PC.	