



AIR OPERATED FOLDING JACK 15-30tonne - TELESCOPIC

MODEL NO: **YAJ15-30F.V2**

Thank you for purchasing a Sealey product. Manufactured to a high standard, this product will, if used according to these instructions and properly maintained, give you years of trouble free performance.

IMPORTANT: PLEASE READ THESE INSTRUCTIONS CAREFULLY. NOTE THE SAFE OPERATIONAL REQUIREMENTS, WARNINGS & CAUTIONS. USE THE PRODUCT CORRECTLY AND WITH CARE FOR THE PURPOSE FOR WHICH IT IS INTENDED. FAILURE TO DO SO MAY CAUSE DAMAGE AND/OR PERSONAL INJURY AND WILL INVALIDATE THE WARRANTY. KEEP THESE INSTRUCTIONS SAFE FOR FUTURE USE.

1. SAFETY



Refer to
Instructions



Wear protective
footwear



Wear protective
clothing



Wear protective
gloves

- ✓ Disconnect the jack from air supply before changing parts, servicing or performing any maintenance.
- ❑ **WARNING!** ensure correct air pressure is maintained and not exceeded.
- ✓ Keep air hose away from heat, oil and sharp edges. Check air hose for wear before each use, and ensure that all connections are secure.
- ✓ Ensure that the jack is in sound condition and good working order. Take action for immediate repair or replacement of damaged parts.
- ✓ Use genuine parts only. Unauthorised parts may be dangerous and will invalidate the warranty.
- ✓ Use jack on level and solid ground, preferably concrete. *Avoid tarmac/adam as jack may sink in.*
- ✓ Place wedges under wheels of vehicle.
- ✓ Ensure the vehicle handbrake is engaged, engine is switched off and transmission is in gear (or "Park" if automatic).
- ✓ Ensure minimum distance of 0.5m between vehicle and static objects such as doors, walls, etc., to allow for vehicle tilting.
- ✓ Only place jack under those lifting points recommended by vehicle manufacturer (see vehicle handbook).
- ✓ Check that the jacking point is stable and centred on the jack saddle and is free from grease and oil.
- ✓ Locate the jack in a suitable, well lit work area.
- ✓ Keep work area clean and tidy and free from unrelated materials.
- ✓ Use a qualified person to maintain or repair the jack's hydraulic system.
- ✗ **DO NOT** top up hydraulic system with brake fluid. Use hydraulic jack oil only.
- ✓ Ensure there are no passengers in the vehicle.
- ✓ Ensure all non-essential persons keep a safe distance whilst the jack is in use.
- ▲ **DANGER:** Use the jack for lifting only, **NOT** for supporting the lifted load.
- ✓ Use suitable capacity axle stands under the vehicle before proceeding with any task.
- ✗ **DO NOT** allow untrained persons to operate the jack.
- ✗ **DO NOT** operate the jack if parts are missing or damaged.
- ✗ **DO NOT** exceed the rated capacity of the jack.
- ✗ **DO NOT** allow the vehicle to move while supported by the jack.
- ✗ **DO NOT** jack the vehicle if there is a risk of spillage of fuel, battery acid, or other dangerous substances.
- ✗ **DO NOT** work under the vehicle until axle stands have been positioned correctly.
- ✗ **DO NOT** use the jack for purposes other than that for which it is intended.
- ✗ **DO NOT** adjust the safety overload valve.
- ✗ **DO NOT** apply your body weight to the handle during jacking. The handle is only for moving the jack to and from the jacking location.
- ✗ **DO NOT** direct air from the air hose at yourself or others.
- ✗ **DO NOT** use the jack if believed to have been subjected to abnormal load or shock. Inspect and take appropriate action.
- ✓ Ensure that there are no persons or obstructions beneath the vehicle before lowering.
- ✓ When not in use disconnect jack from the air supply, and store, fully lowered, in a safe, dry, childproof area.
- ❑ **WARNING!** Turn off air supply and de-pressurise the control nozzle before removing the pump unit from any installation or mobile system. Failure to comply with this instruction may damage the unit and will invalidate your warranty.



2. INTRODUCTION

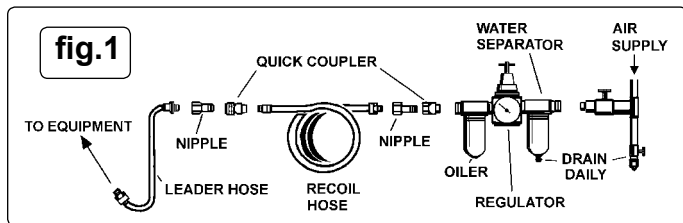
Compact, light weight professional folding air jack featuring spring loaded dead man's control enabling safe, controlled lifting/lowering of vehicles. Ideal for workshop or roadside use: takes the effort out of lifting heavy plant, tractors and commercial vehicles. Handle locks in position and can be used at different angles to allow improved manoeuvrability and access around the vehicle. Supplied with 45mm and 75mm extensions to close the gap between the jack saddle and jacking point.

3. SPECIFICATION

Model No: **YAJ15-30F**
 Maximum Capacity: 30tonnes (30000kg)
 Minimum Height: 150mm
 Maximum Height (inc. extension)/Capacity:
 Stage 1 (mm/tonnes) 343/30
 Stage 2(mm/tonnes) 409/15
 Piston Stroke: 139mm
 Extensions: 45mm,75mm

Chassis Length: 500mm
 Length including Handle: 1000mm + 600mm (extension)
 Width without Wheels: 176mm
 Overall Width: 290mm
 Air Consumption: 10.5cfm
 Working Pressure: 116-174psi
 Weight: 24kg

4. AIR SUPPLY



- 4.1. Ensure that the jack pneumatic switch is in the "off" position before connecting to the air supply.
- 4.2. Use an air pressure of between 116psi and 174psi and an air flow of 10.5cfm to get the best performance from this jack.
- 4.3. **WARNING!** Ensure the air supply does not exceed the stated maximum pressure while operating the jack.
Too high an air pressure and unclean air will shorten the products life due to excessive wear, and may be dangerous causing possible damage and personal injury.
- 4.4. Drain the air tank daily. Water in the air line will damage the jack.
- 4.5. Clean the air inlet filter screen weekly.
- 4.6. Keep the air hose between the compressor and the air jack as short as possible, and install an air filter and oiler (fig.1).
- 4.6. Line pressure should be increased to compensate for unusually long air hoses (over 8 metres). The minimum hose diameter should be 3/8" I.D. and fittings must have the same inside dimensions.
- 4.8. Keep hose away from heat, oil and sharp edges. Check hoses for wear, and make certain that all connections are secure.

5. OPERATION

- 5.1. The jack can be carried by lifting with the carrying handle, which is at the point of balance.

WARNING: The jack is heavy! (24kg)

- 5.2. To make the jack manoeuvrable, the extension handle may be fitted.
 - 5.2.1. Depress the handle lock pedal and swing the handle up to the required position (fig.3)
 - 5.2.2. Remove the extension fixing screw from the handle (fig.4).
 - 5.2.3. Place the extension handle so the notch in the cup fits around the control lever (fig.4)
 - 5.2.4. Secure the extension by inserting the fixing screw through the extension into the handle (fig.4).

5.2. Preparation

- 5.2.1. Check that the air supply meets the requirements set out in section 4.
- 5.2.2. Connect the air supply to the connector (fig.4).

5.3. Purging the System

Before using the jack, purge the hydraulic circuit in order to eliminate any air that may have entered the system during transit.

- 5.3.1. Push the control lever (fig.5) to the 'down' (fig.5.A) position and hold it for several seconds. Release the lever to the centre 'hold' position.
- 5.3.2. Now push the lever to the 'up' position (fig.5.B) and hold it there until the jack is fully extended. Push the lever to the 'down' (fig.5.A) position and observe the jack as it retracts. The lowering movement should be smooth and even.
- 5.3.3. Repeat the raising and lowering cycle until the movement is smooth. Once achieved this indicates that all air has been expelled.

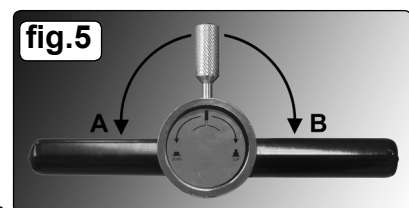
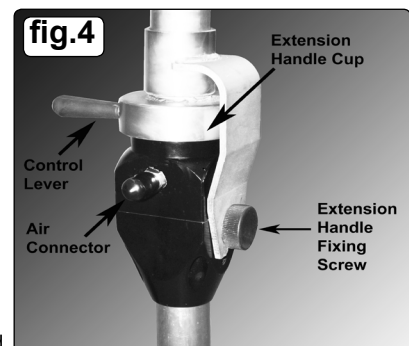
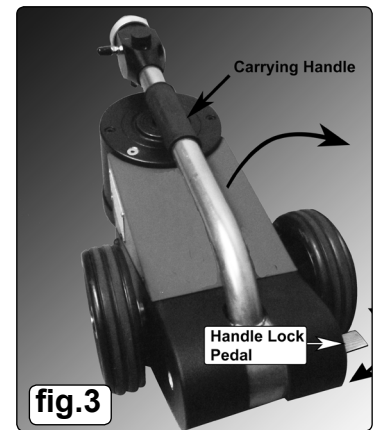
5.4. Using the Jack

WARNING! Ensure that you have read and understood the safety instructions in section 1 before commencing work.

- 5.4.1. Position the jack under the vehicle manufacturer's recommended jacking point (see vehicle handbook).
Note: Use the extension pins to increase the lift height of the jack.
- 5.4.2. Whilst holding the main jack handle, lifting is achieved by pushing the control lever to the 'up' position (fig.5.B).
- 5.4.3. When the vehicle has reached the desired height release the control lever which will return to the middle hold position. This will automatically stop any further air flow and hold the jack.
- 5.4.4. Place axle stands correctly in position and ensure section 1 safety instructions are applied strictly before performing any task.

5.5. Lowering the Jack

- 5.5.1. Ensure there are no persons or obstruction beneath the vehicle before lowering.
- 5.5.2. Raise the the load clear of any axle stands and remove them.
- 5.5.3. Whilst holding the main jack handle, lowering is achieved by pushing the control lever to the 'down' position (fig.5.A), and the jack will lower in a controlled manner.
- 5.5.4. Once lowered completely, releasing the control lever will return to the middle hold position. Remove the jack from under the vehicle. If no longer needed, turn the air pressure supply off and disconnect from the air line and store the jack and air line in a safe, dry location.



6. MAINTENANCE

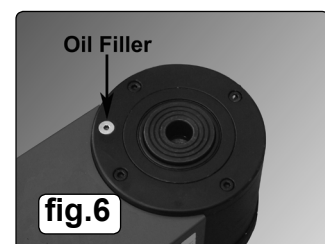
✓ **Only fully qualified personnel should attempt maintenance or repair.**

WARNING! Disconnect jack from air supply before changing parts, servicing or performing any maintenance.

- 6.1. When the jack is not in use, the piston rod must be in the lowest position to minimise corrosion.
- 6.2. Keep the jack clean and lubricate all moving parts on a regular basis.
- 6.3. To check oil level, lower jack fully. Remove the bolt (fig.6). The correct oil level should be up to the entrance of the oil filler opening.
If oil level is low, fill as required. **NOTE:** Use a good quality Jack oil, such as SEALEY HYDRAULIC JACK OIL.

WARNING! DO NOT use brake fluid, or any fluid other than hydraulic jack fluid as this may cause serious damage to the jack and will invalidate the warranty.

WARNING! wear safety goggles.



- 6.4. Should the piston not rise and the oil level and operation is correct, this may indicate a problem with air seeping into the hydraulic valve passage. Purge any air from the system, see paragraph 5.3.
- 6.5. Confirm that the piston rises to the highest position.
- 6.6. If the air system does not have an oiler, lubricate the air pump once or twice a month with a few drops of Sealey air tool oil dripped into the air inlet to prolong air pump life.
- 6.7. After a year of extensive use, the oil should be replaced in order to extend the life of your equipment. To drain the oil, remove the bolt (fig.6). Make sure that no dirt is allowed to enter the hydraulic system's oil. See section 6.3. for refilling instructions.
- 6.9. Check the piston rod periodically for signs of corrosion. Clean exposed areas with a clean oiled cloth.

IMPORTANT: NO RESPONSIBILITY IS ACCEPTED FOR INCORRECT USE OF THE MACHINE.

Air / Hydraulic products are only repaired by local service agents. We have service/repair agents in all parts of the UK.

DO NOT return jacks to us. Please telephone us on 01284 757500 to obtain the address and phone number of your local agent. If Jack is under guarantee please contact your dealer.

Decommissioning the jack

Should the Jack become completely unserviceable and require disposal, draw off the oil into an approved container and dispose of the jack and the oil according to local regulations.

7. TROUBLESHOOTING

PROBLEM	POSSIBLE CAUSE	REMEDY
Vehicle does not lift but pump is OK	1. Oil exhausted.	1. Supply oil.
	2. Air in hydraulic system.	2. Purge the hydraulic circuit..
	3. Defective suction or delivery valves.	3. Clean clogged valve.
	4. Defective packing or O-ring.	4. Replace.
	5. Poor oil quality.	5. Replace oil.
Air pump does not operate.	1. Insufficient compressor power.	1. Use a compressor larger than 3HP.
	2. Pump oil used up.	2. Dismantle the air pump and coat it with soft quality non acid grease or lubricate air valve.
Vehicle stops before lift is completed.	1. Hydraulic oil is insufficient.	1. Supply oil.
Jack lowers or does not hold vehicle in the raised position.	1. Defective suction, delivery, release or safety valve.	1. Clean and adjust valve.
	2. Defective piston packing.	2. Replace packing.
Lifting is too slow	1. Air leakage due to worn servo-valve.	1. Replace servo-valve.
Pump continues to operate when the air valve is closed.	1. Air valve will not close.	1. Replace valve.

Parts support is available for this product. Please log on to www.sealey.co.uk, email sales@sealey.co.uk or telephone 01284 757500



ENVIRONMENT PROTECTION

Recycle unwanted materials instead of disposing of them as waste. All tools, accessories and packaging should be sorted, taken to a recycling centre and disposed of in a manner which is compatible with the environment. When the product becomes completely unserviceable and requires disposal, drain any fluids (if applicable) into approved containers and dispose of the product and fluids according to local regulations.

Note: It is our policy to continually improve products and as such we reserve the right to alter data, specifications and component parts without prior notice.

Important: No Liability is accepted for incorrect use of this product.

Warranty: Guarantee is 12 months from purchase date, proof of which is required for any claim.

Sealey Group, Kempson Way, Suffolk Business Park, Bury St Edmunds, Suffolk. IP32 7AR



01284 757500



01284 703534



sales@sealey.co.uk



www.sealey.co.uk