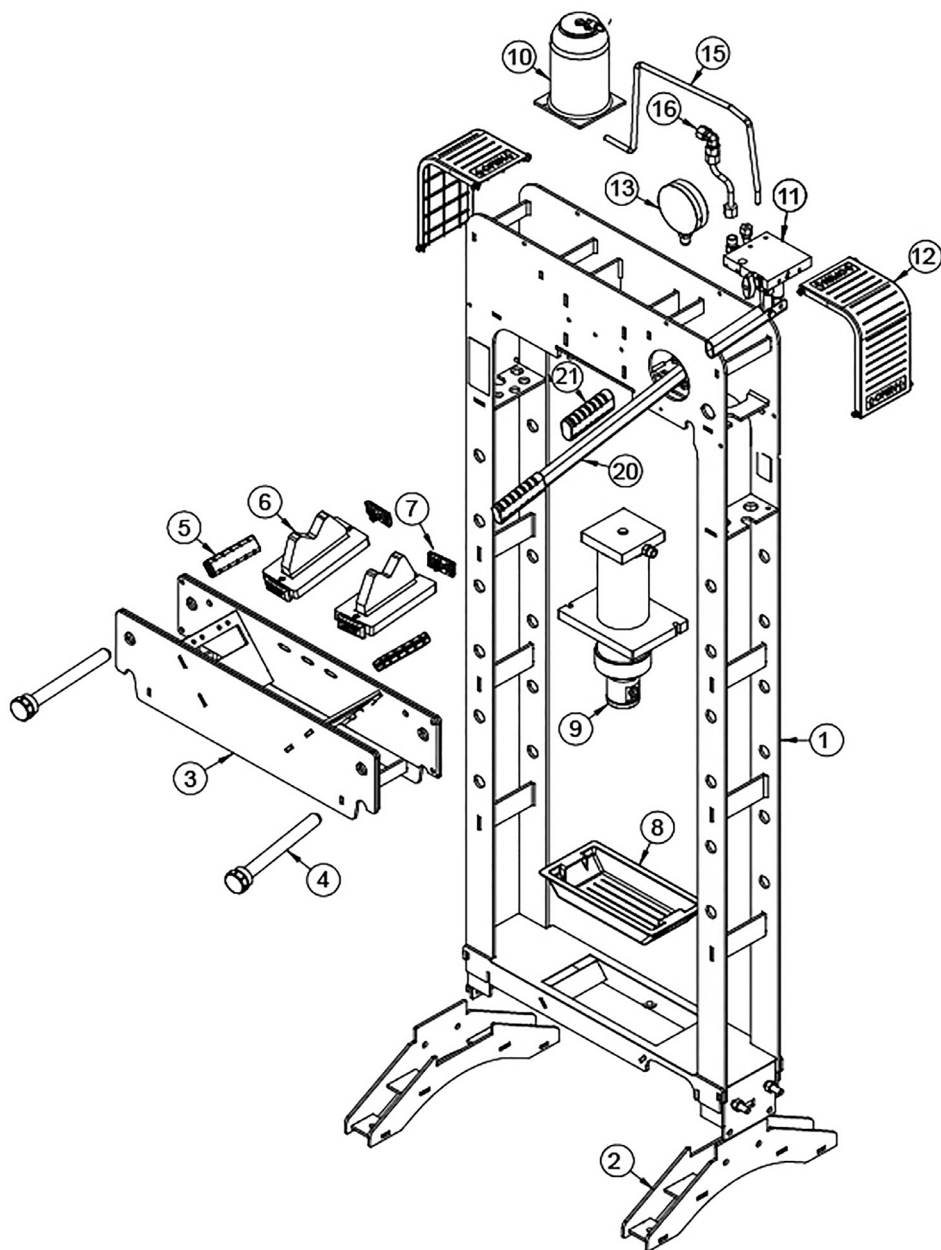


Parts Information: Premier Hydraulic Press 20tonne Floor Type Model No: PPF20



Item	Part No.	Description
1	M0204000058	Frame For PPF20 & PPF30
2	M0207000002	Frame Foot
3	M0299000349	Table
4	M0299000350	Table Support Pin (Red)
5	M0299000360	Table Grip (Red)
6	M0299000347	V-Block
7	M0299000418	V-Block End Cover (Black)
8	M0316000063	Bottom Tray (Red)
9	M010800050	Ram Ass'y For PPF20

Item	Part No.	Description
10	M0209000003	Oil Tank
11	M010900015	Pump Ass'y for PPF20 & PPF30
12	M0299000359	Side Cover
13	A-5601-20	Pressure Gauge 20 tonne For PPF20 (btm fitting)
15	M0299000556	Oil Tank/Pump Ass'y Hose
16	M0299000601	Gauge Hose
20	M0218000061	Pumping Handle (Red)
21	M0316000176	Pumping Handle Grip

NOTE: It is our policy to continually improve products and as such we reserve the right to alter data, specifications and component parts without prior notice. There may be alternative versions of this product, please contact us should you require this information.

IMPORTANT: No liability is accepted for incorrect use of product. Spare parts must be fitted by a competent person

WARRANTY: Guarantee is 12 months from purchase date, proof of which will be required for any claim.

Sealey Group, Kempson Way, Suffolk Business Park, Bury St Edmunds, Suffolk. IP32 7AR



01284 757500



01284 703534



sales@sealey.co.uk

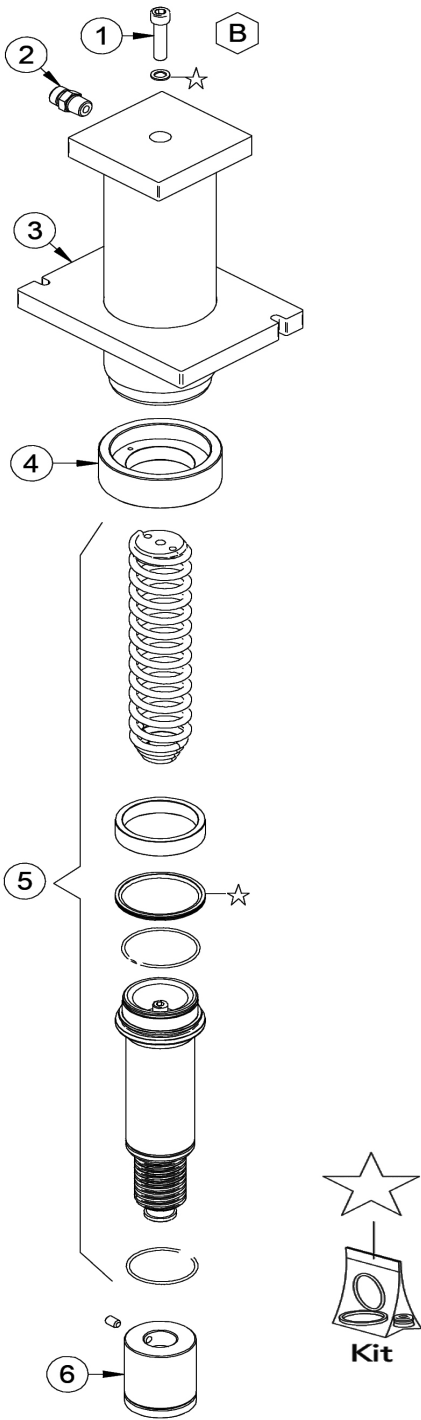


www.sealey.co.uk



Parts Information:
**Premier Hydraulic Press 20tonne Floor
Type
Model No: PPF20**

RAM PARTS



Item	Part No.	Description
1	CS-100A/1383	Screw
2	KCK-15-2121	Connector
3	M0203000141	Cylinder Casing
4	M0303000156	Guide Ring

Item	Part No.	Description
5	M0211000056	Ram
6	KCK30A-C17M	Ram Head
--	M0908000003	Repair Kit For Ram

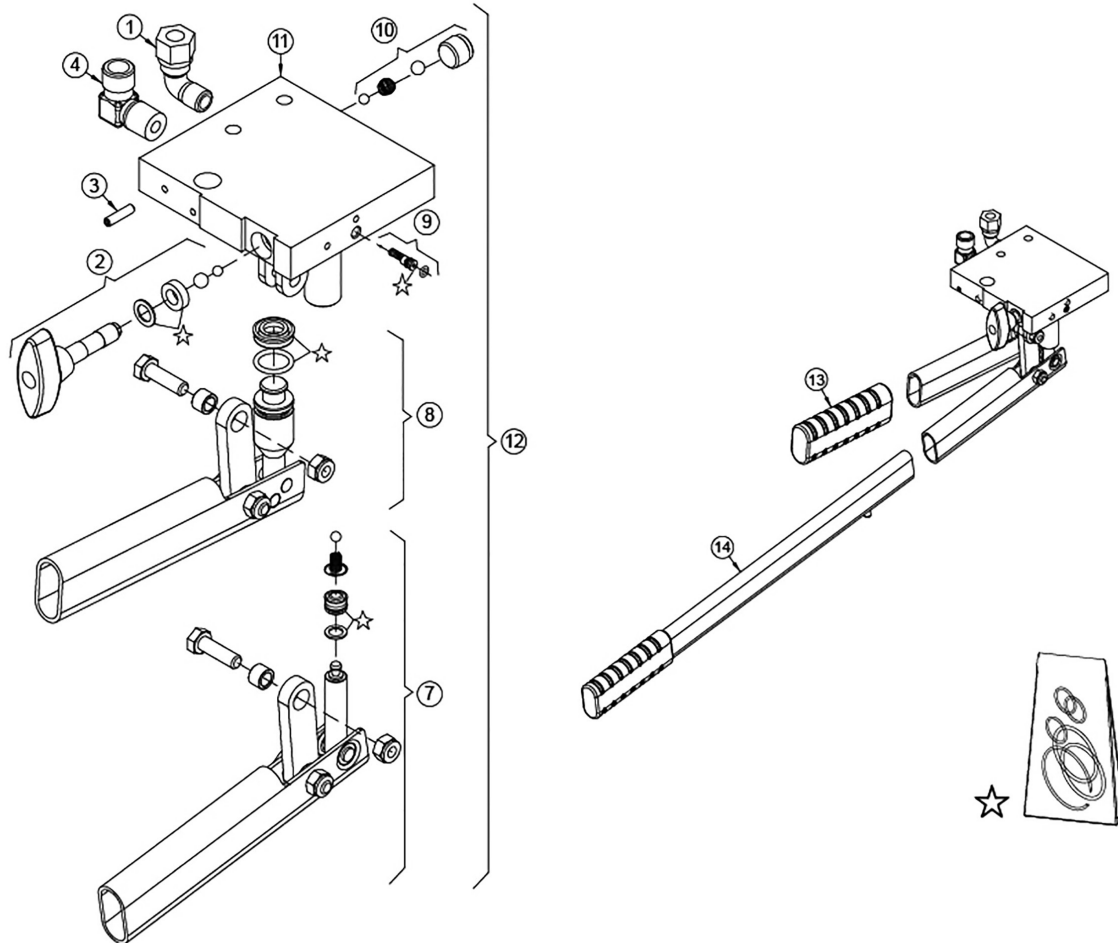
NOTE: It is our policy to continually improve products and as such we reserve the right to alter data, specifications and component parts without prior notice. There may be alternative versions of this product, please contact us should you require this information.

IMPORTANT: No liability is accepted for incorrect use of product. Spare parts must be fitted by a competent person

WARRANTY: Guarantee is 12 months from purchase date, proof of which will be required for any claim.



PUMP PARTS



Item	Part No.	Description
1	M0407000003	Connector 'U'
2	BM04-C11M	Release Knob Ass'y
3	M0401000115	Pin
4	M0407000004	Elbow Connector
7	M0217000052	Pumping Handle (Short)
8	M0217000053	Pumping Handle Complete (Short)
9	M0999000004	Safety Valve Ass'y

Item	Part No.	Description
10	BKD-09-C10	Plug Ass'y
11	M0203000132	Pump Base
12	M01090015	Pump Ass'y For PPF20 & PPF30
13	M0316000176	Pumping Handle Grip
14	M0218000061	Pumping Handle (Red)
--	M0909000002	Repair Kit for Pump

NOTE: It is our policy to continually improve products and as such we reserve the right to alter data, specifications and component parts without prior notice. There may be alternative versions of this product, please contact us should you require this information.

IMPORTANT: No liability is accepted for incorrect use of product. Spare parts must be fitted by a competent person

WARRANTY: Guarantee is 12 months from purchase date, proof of which will be required for any claim.