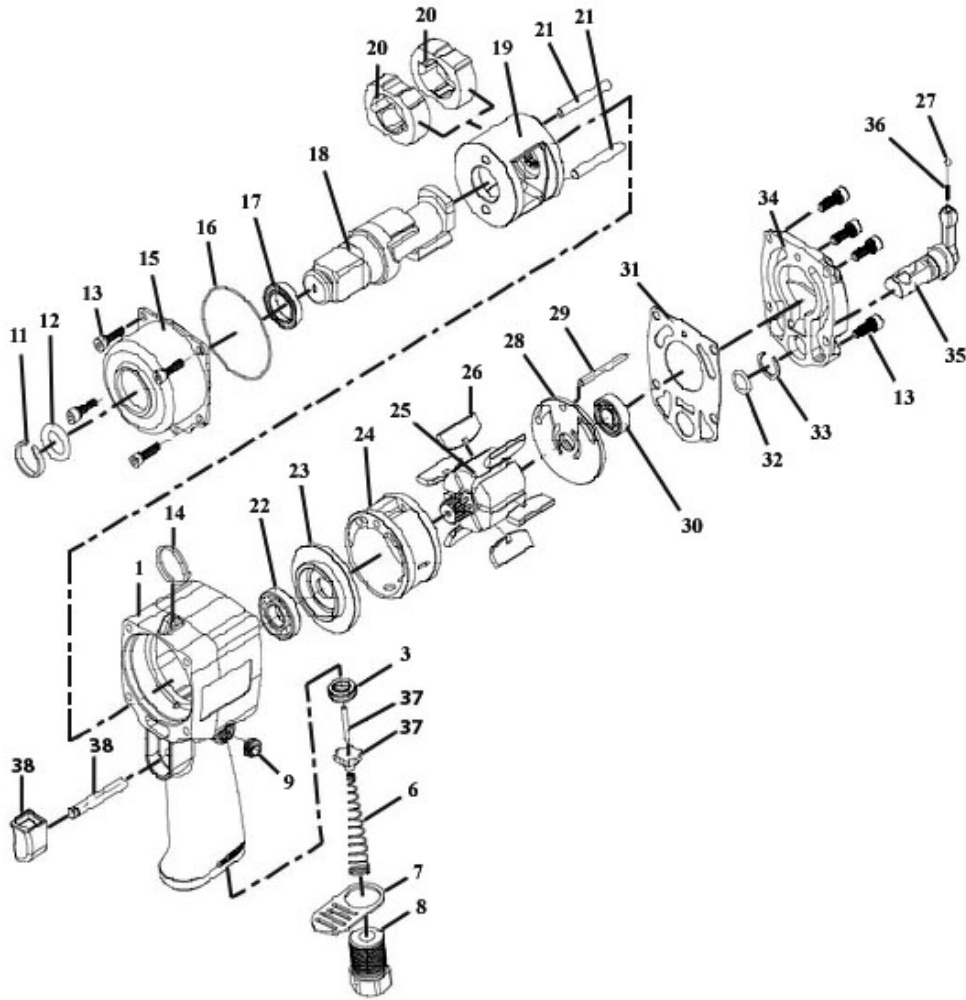




Parts Information:
**Air Impact Wrench 1/2" Sq Drive Compact
 Twin Hammer**
Model No: SA203



Item	Part No.	Description
1	SA203.01	HOUSING
3	SA203.03	VALVE SEAT
6	SA203.06	VALVE SRING
7	SA203.07	EXHAUST DEFLECTOR
8	SA203.08	AIR INLET BUSHING
9	GSM108.S	GRUB SCREW M10x8 (SINGLE)
11	SA203.11	SOCKET RETAINER
12	SA203.12	O-RING (6.8x1.9)
13	SA203.13	CAP SCREW
14	SA203.14	RING
15	SA203.15	HAMMER CASE
16	SA203.16	O-RING
17	SA203.17	BEARING
18	SA203.18	ANVIL (1/2")
19	SA203.19	HAMMER CAGE
20	SA203.20	HAMMER DOG
21	SA203.21	HAMMER PIN

Item	Part No.	Description
22	B/R8	BEARING R8
23	SA203.23	FRONT END PLATE
24	SA203.24	CYLINDER
25	SA203.25	ROTOR
26	SA203.26	ROTOR BLADE
27	SB-3.2	STEEL BALL 3.2mm
28	SA203.28	REAR END PLATE
29	SA203.29	DOWEL PIN
30	B/R6-ZZ	BEARING R6-ZZ
31	SA203.31	GASKET
32	SA203.32	O-RING
33	SA203.33	RETAINING RING
34	SA203.34	END CAP
35	SA203.35	REVERSE LEVER
36	SA203.36	SPRING
37	SA203.NS-A	VALVE ASS'Y
38	SA203.NS-B	TRIGGER ASS'Y

NOTE: It is our policy to continually improve products and as such we reserve the right to alter data, specifications and component parts without prior notice.

IMPORTANT: No liability is accepted for incorrect use of product.

WARRANTY: Guarantee is 12 months from purchase date, proof of which will be required for any claim.

Sealey Group, Kempson Way, Suffolk Business Park, Bury St Edmunds, Suffolk. IP32 7AR



01284 757500



01284 703534



sales@sealey.co.uk



www.sealey.co.uk