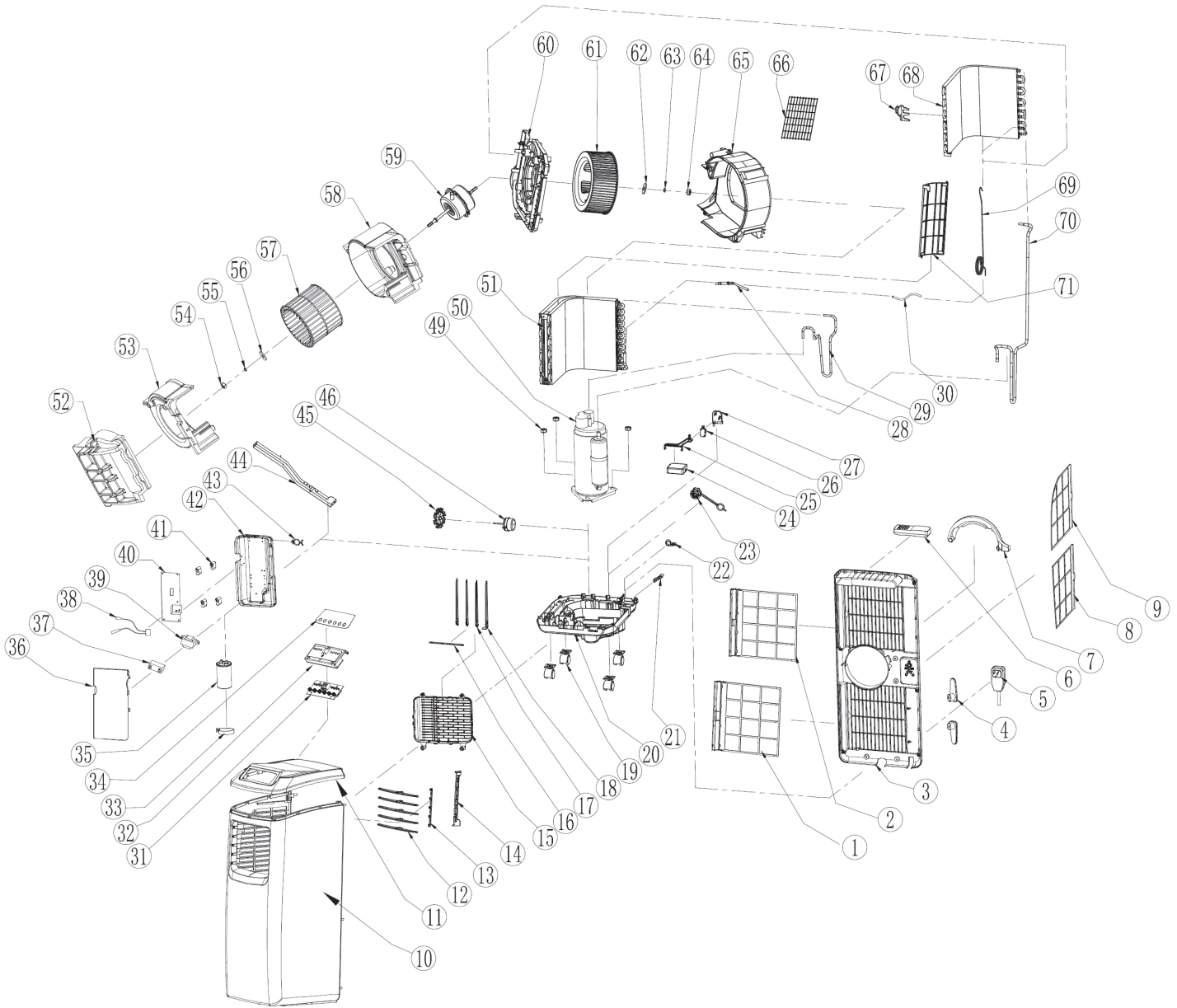




Parts Information:
Air Conditioner/Dehumidifier 9,000Btu/hr
Model No: SAC9001



NOTE: It is our policy to continually improve products and as such we reserve the right to alter data, specifications and component parts without prior notice.

IMPORTANT: No liability is accepted for incorrect use of product.

WARRANTY: Guarantee is 12 months from purchase date, proof of which will be required for any claim.

Sealey Group, Kempson Way, Suffolk Business Park, Bury St Edmunds, Suffolk. IP32 7AR



01284 757500



01284 703534



sales@sealey.co.uk



www.sealey.co.uk



Parts Information:
Air Conditioner/Dehumidifier 9,000Btu/hr
Model No: SAC9001

Item	Part No.	Description
1	SAC9001.01	FILTER FRAME
2	SAC9001.02	FILTER FRAME (UPPER)
3	SAC9001.03	BACK PANEL
4	SAC9001.04	CORD WRAP
5	SAC9001.05	POWER CORD
6	SAC9001.06	REMOTE CONTROL
7	SAC9001.07	DUCT CLAMP
8	SAC9001.08	CONDENSOR FILTER
9	SAC9001.09	EVAPORATOR FILTER
10	SAC9001.10	FRONT PANEL
11	SAC9001.11	TOP COVER
12	SAC9001.12	HORIZONTAL VANE
13	SAC9001.13	VANE SUPPORT
14	SAC9001.14	VANE BRACKET
15	SAC9001.15	AIR OUTLET FRAME
16	SAC9001.16	VERTICAL VANE SUPPORT
17	SAC9001.17	VERTICAL VANE
18	SAC9001.18	VERTICAL VANE (MAIN)
19	SAC9001.19	UNIVERSAL WHEEL
20	SAC9001.20	BASE
21	SAC9001.21	POWER CORD STATOR
22	SAC9001.22	WIRE CLAMP
23	SAC9001.23	DRAIN CAP
24	SAC9001.24	FLOAT
25	SAC9001.25	FLOAT BUTTON
26	SAC9001.26	WATER LEVEL SWITCH
27	SAC9001.27	SWITCH STATOR
28	SAC9001.28	FILTER (3-WAY)
29	SAC9001.29	DELIVERY TUBE
30	SAC9001.30	SLEEVE FOR CAPILLARY (A)
31	SAC9001.31	DISPLAY PANEL
32	SAC9001.32	CONTROL PANEL
33	SAC9001.33	CAPACITOR BUTTON
34	SAC9001.34	EXTERIOR FILM
35	SAC9001.35	WATER MOTOR BRACKET
36	SAC9001.36	ELECTRICAL BOX COVER

Item	Part No.	Description
37	SAC9001.37	MOTOR CAPACITOR
38	SAC9001.38	SENSOR COMPONENT
39	SAC9001.39	TRANSFORMER
40	SAC9001.40	PCB
41	SAC9001.41	ISOLATED COLUMN
42	SAC9001.42	ELECTRICAL BOX BASE
43	SAC9001.43	WIRE CLIP
44	SAC9001.44	LOW PRESSURE, RIGHT BRACKET
45	SAC9001.45	WATER WHEEL
46	SAC9001.46	WATER PUMP MOTOR
49	SAC9001.49	SHOCKPROOF FEET
50	SAC9001.50	CLAW SHIM
51	SAC9001.51	NUT
52	SAC9001.52	COMPRESSOR
53	SAC9001.53	CONDENSER COMPONENT
54	SAC9001.54	UPPER SEALED FOAM
55	SAC9001.55	UPPER FOAM
56	SAC9001.56	NUT
57	SAC9001.57	SPRING WASHER
58	SAC9001.58	FLAT SHIM
59	SAC9001.59	UPPER FAN WHEEL
60	SAC9001.60	LOWER FOAM
61	SAC9001.61	FAN MOTOR
62	SAC9001.62	AIR SUPPORT, LOWER
63	SAC9001.63	LOWER FAN WHEEL
64	SAC9001.64	FLAT SHIM
65	SAC9001.65	SPRING WASHER
66	SAC9001.66	NUT
67	SAC9001.67	LOWER AIR SUPPORT
68	SAC9001.68	METAL GRILLE
69	SAC9001.69	TEMP SENSOR CLIP
70	SAC9001.70	EVAPORATOR COMPONENT
71	SAC9001.71	CAPILLARY TUBE
72	SAC9001.72	RETURN TUBE
73	SAC9001.73	WATER FILTER
--	SAC12000.47	EXHAUST DUCT (NOT SHOWN)

NOTE: It is our policy to continually improve products and as such we reserve the right to alter data, specifications and component parts without prior notice.

IMPORTANT: No liability is accepted for incorrect use of product.

WARRANTY: Guarantee is 12 months from purchase date, proof of which will be required for any claim.

Sealey Group, Kempson Way, Suffolk Business Park, Bury St Edmunds, Suffolk. IP32 7AR



01284 757500



01284 703534



sales@sealey.co.uk



www.sealey.co.uk