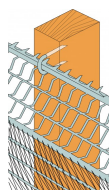
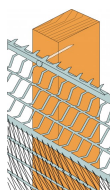
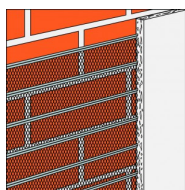


The RBL Bib Lath provides plaster/render backing and is also suitable for the refurbishing of damaged or deteriorated faces of masonry walls. Available in galvanised for internal use and stainless steel for external use.

[UK-DoP-h08/0002](#)



## TECHNICAL DATA

### RBL - Dimensions

References	Material	Dimensions [mm]
RBL4/10	Galvanised	2460 x 600 x 0.4
RBL4S/5	Stainless Steel	2460 x 600 x 0.4

