

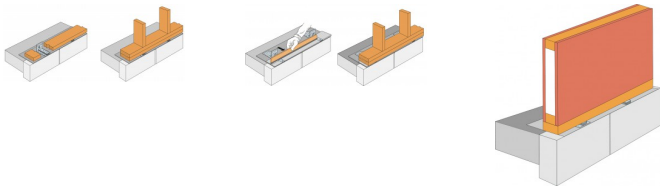


TFLS provides the combined function of levelling and fixing the sole plate to the foundation or substructure. It comprises a universal base plate and packing pieces which can be added or removed as required. The system transfers vertical and lateral loads from the wall to the foundation.

FEATURES

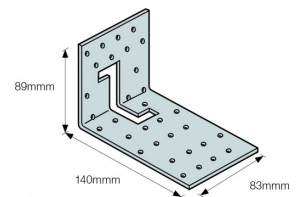
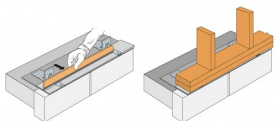
Material

- Pre-galvanised mild steel.



TECHNICAL DATA

Product Dimensions - Bracket



TFLSB

INSTALLATION

Standard Installation

- Starting at the highest point of the foundation slab, position and install the TFLS bracket, including one packer underneath the sole plate.
- Position and install a second TFLS bracket at one end of the sole plate and level to the first by adding packers to the second TFLS bracket. If necessary, install a third TFLS at the other end of the sole plate and level to the first.
- Infill between TFLS brackets with additional brackets. Level by adding packers as necessary to each bracket. Ideally position infill brackets under load points (stud positions) at centres specified by the engineer/building designer.
- Repeat process around the rest of the building. Once the ground floor walls are in situ, install packers under the load points not supported by a TFLS bracket.

Alternative installation (aids levelling the mortar bed)

- Starting at the highest point of the foundation slab, position and install the TFLS bracket including one packer.
- Position and install a second TFLS bracket at the opposite end of the foundation slab and level to the first by adding packers as necessary to the second TFLS bracket.
- Infill between first and second TFLS brackets with additional brackets. Level by adding packers as necessary to each bracket.
- Using the levelled TFLS as a guide, mortar between the brackets to produce a level base for the sole plate to sit on - ensuring the mortar bed is the full width of the sole plate.

TECHNICAL NOTES

Notes

- The TFLS is laid on top of the DPC.
- Fixing of the TFLS bracket to the foundation and the sole plate shall be in accordance with the engineer's instructions.
- If the TFLS bracket and/or packers are installed at every load point then it is not necessary to fill the void between the underside of the sole plate and the foundation with structural grout (filling of void may be required to satisfy other regulations or requirements, i.e. Part L and Part E regulations).