



The THM (Truss Hanger Mono) is a joist hanger for supporting mono trusses from timber members. The THM hanger offers two installation options:

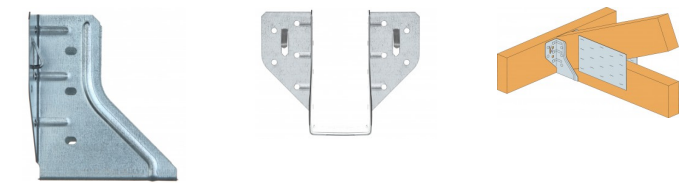


[ETA-17/0554](#), [UK-DoP-e17/0554](#)

**FEATURES**

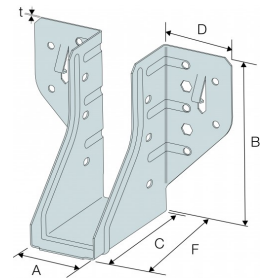
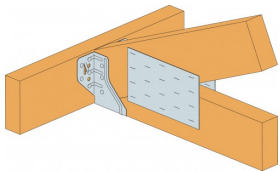
**Material**

- Pre-galvanised mild steel.



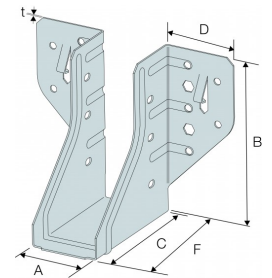
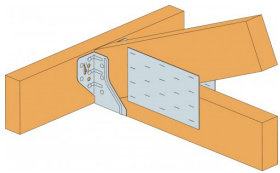
**TECHNICAL DATA**

**Product dimensions - Standard nailing**



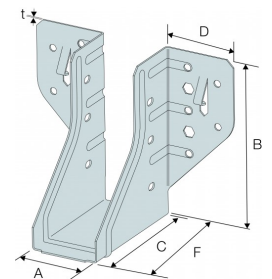
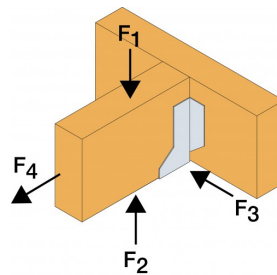
References	Joist Size [mm]				Product Dimensions [mm]						Header holes <math>\phi 48</math> <math>\phi 6 \times 4</math>	Joist holes <math>\phi 6 \times 4</math>
	Width		Height		A	B	C	D	F	t		
	Min	Max.	Min	Max.								
THM230/38	35	38	100	150	38	96	75	42	77	0.9	10	6
THM230/44	44	44	100	150	44	93	75	42	77	0.9	10	6
THM230/47	47	47	100	150	47	91.5	75	42	77	0.9	10	6
THM230/50	50	50	100	150	50	90	75	42	77	0.9	10	6

**Product dimensions - Double shear nailing**



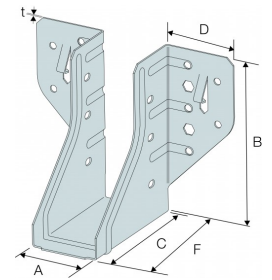
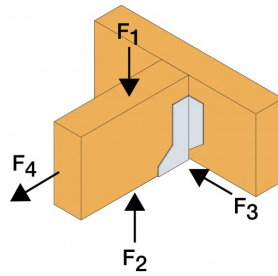
References	Joist Size [mm]				Product Dimensions [mm]						Header holes	Joist holes
	Width		Height		A	B	C	D	F	t	Ø1	Ø2
	Min	Max.	Min	Max.								
THM230/38	35	38	100	150	38	96	75	42	77	0.9	10	6
THM230/44	44	44	100	150	44	93	75	42	77	0.9	10	6
THM230/47	47	47	100	150	47	91.5	75	42	77	0.9	10	6
THM230/50	50	50	100	150	50	90	75	42	77	0.9	10	6

**Product capacities - Standard nailing**



References	Number of Fasteners		Characteristic capacities - Timber TR26 [kN]	Safe Working Loads [kN]	
	Header	Joist		$R_{1,SWL,Medium Term}$	$R_{1,SWL,Long term}$
	Qty	Qty		TR26 header N3.75x30	TR26 header N3.75x30
THM230/38	10	6	7.3	3.9	3.4
THM230/44	10	6	7.3	3.9	3.4
THM230/47	10	6	7.3	3.9	3.4
THM230/50	10	6	7.3	3.9	3.4

**Product capacities - Double shear nailing**



References	Number of Fasteners				Characteristic capacities - Timber TR26 [kN]	Safe Working Loads [kN]	
	Header		Joist			R <sub>1,SWL,Medium Term</sub>	R <sub>1,SWL,Long term</sub>
	Qty	Type	Qty	Type	&lt;div>N3.75x30&lt;/div>	TR26 header N3.75x30	TR26 header N3.75x30
THM230/38	10	N3.75x30	6	N3.75 x 75	9.8	5.1	4.4
THM230/44	10	N3.75x30	6	N3.75 x 75	9.8	5.1	4.4
THM230/47	10	N3.75x30	6	N3.75 x 75	9.8	5.1	4.4
THM230/50	10	N3.75x30	6	N3.75 x 75	9.8	5.1	4.4

