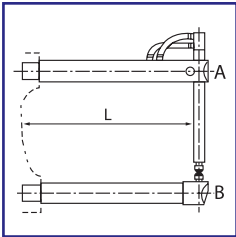


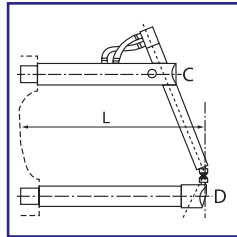
Spot Welding Accessories

Suspended Gun Arms & Electrodes



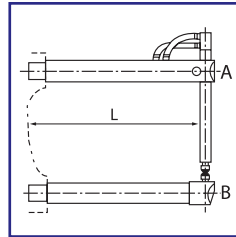
**Upper Arm
Straight (A)**

[4850](#): Length = 190mm
[4854](#): Length = 250mm
[4858](#): Length = 350mm
[4862](#): Length = 508mm
[4866](#): Length = 650mm



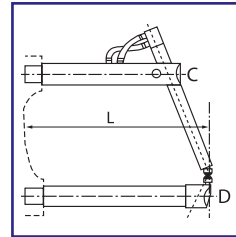
**Upper Arm
Angled (C)**

[4851](#): Length = 190mm
[4855](#): Length = 250mm
[4859](#): Length = 350mm
[4863](#): Length = 508mm
[4867](#): Length = 650mm



**Lower Arm
Straight (B)**

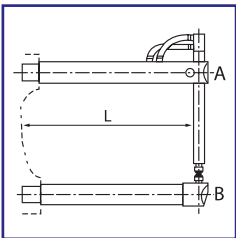
[4852](#): Length = 190mm
[4856](#): Length = 250mm
[4860](#): Length = 350mm
[4864](#): Length = 508mm
[4868](#): Length = 650mm



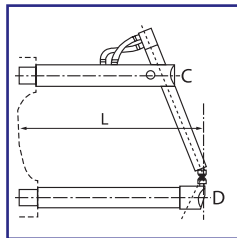
**Lower Arm
Angled (D)**

[4853](#): Length = 190mm
[4857](#): Length = 250mm
[4861](#): Length = 350mm
[4865](#): Length = 508mm
[4869](#): Length = 650mm

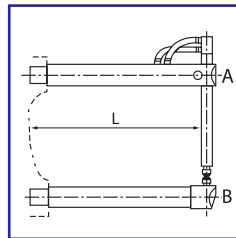
Suspended Gun Arms & Electrodes



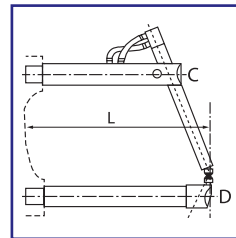
4870 (A)
Upper Arm Straight
800mm



4871 (C)
Upper Arm Angled
800mm

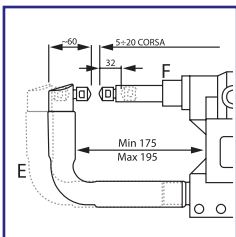


4872 (B)
Lower Arm Straight
800mm

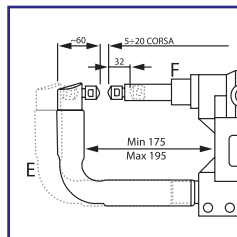


4873 (D)
Lower Arm Angled
800mm

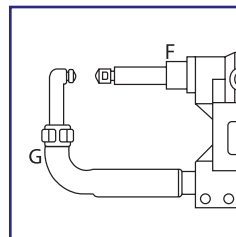
Arms for Suspended Spot Gun 3323



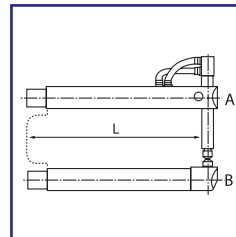
4882 (F)
Upper Arm



4883 (E)
Lower Arm

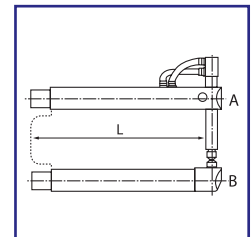


4884 (G)
Lower Arm
with Reduced Ø



Upper Arm (A)

[4750](#): Length = 255mm
[4756/T](#): Length = 408mm



Lower Arm (B)

[4752](#): Length = 255mm
[4758](#): Length = 408mm